

CERTIFICATE OF LOCATION OF GOVERNMENT CORNER

County of Anoka

State of Minnesota

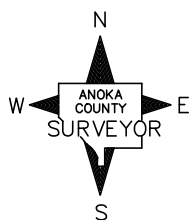
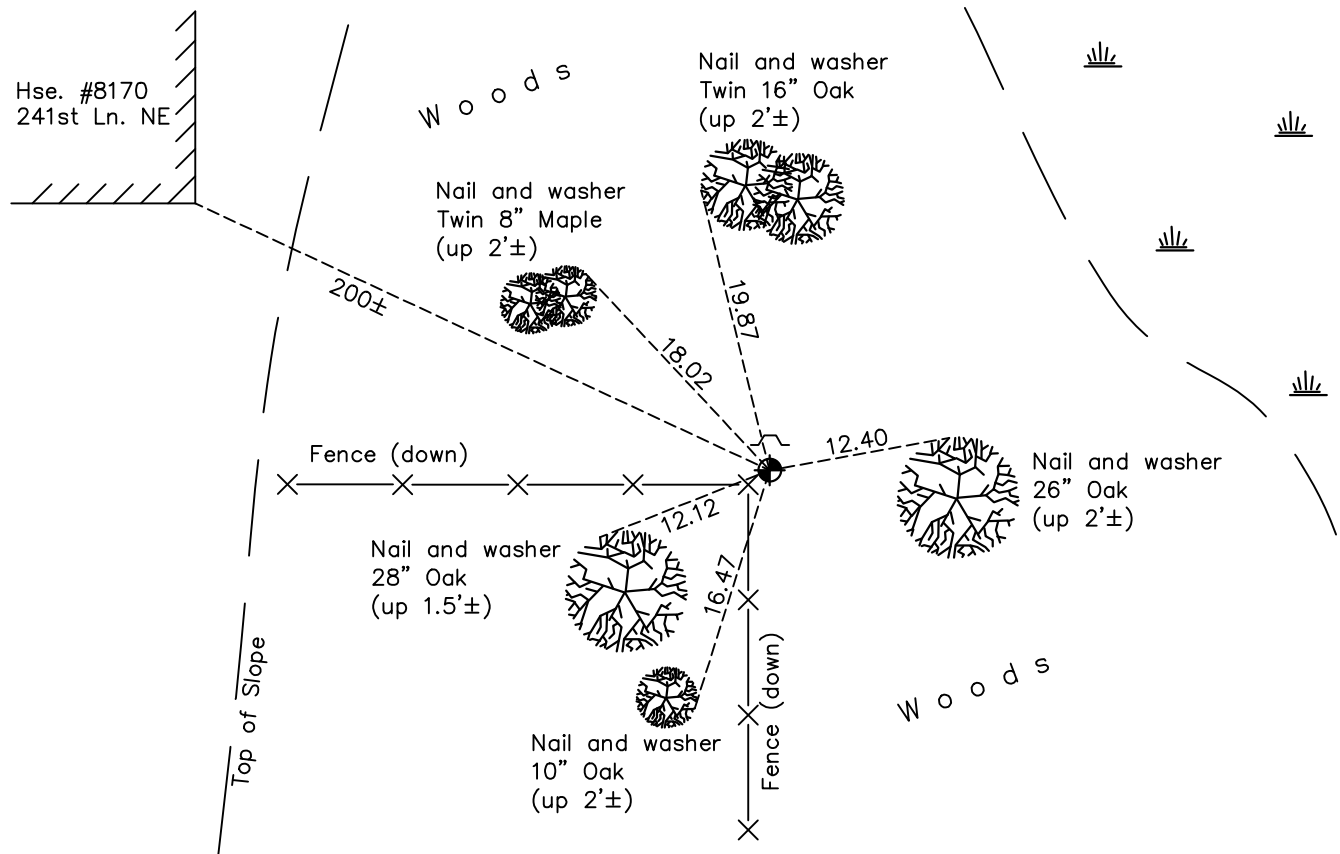
West 1/4 Corner of Sec. 26 Township 34 Range 22

On the 4th day of February, 1963, the described corner was evidenced by a cast iron monument set by N.C. Hoium

and to perpetuate the location of said corner, at the exact location thereof, a permanent marker was placed consisting of the same cast iron monument with a sign and post on the north side

AND on the 7th day of December, 2021, said permanent marker was found flush and the ties were updated.

Updated reference ties are as shown below.



Revision Date
 03/14/2022

N.A.D. 1983 Coordinates
 (1996 Adjustment)

County Project Coordinates	
Northing	<u>234951.6365</u>
Easting	<u>552996.7554</u>
Date	<u>1/15/04</u>

I hereby certify that this United States public land survey monument record is correct and complete to the best of my knowledge and belief.

David Zieglermeier Date 3/22/24

David M. Zieglermeier, Anoka County Surveyor
 Minnesota License Number 46179

HISTORY OF GOVERNMENT CORNER

County of Anoka

State of Minnesota

West 1/4 Corner of Sec. 26 Township 34 Range 22

CORNER HISTORY:

February 4, 1963 - Found cast iron monument set by N.C. Hoium. Updated ties to monument.

June 20, 1967 - Found cast iron monument and updated ties.

August 1, 1975 - Found cast iron monument and updated ties.

August 9, 1978 - Found cast iron monument and updated ties.

June 9, 1982 - Found cast iron monument and updated ties.

November 6, 1990 - Found cast iron monument and updated ties.

July 1, 1993 - Found cast iron monument and updated ties.

January 15, 2004 - Established NAD 1983 (1996 adj.) Anoka County project coordinates by static GPS methods.

January 29, 2014 - Found cast iron monument and updated ties.

January 8, 2019 - Found cast iron monument flush and updated ties.

December 7, 2021 - Found cast iron monument flush. Verified position by VRS GPS methods. Updated ties.