

CERTIFICATE OF LOCATION OF GOVERNMENT CORNER

County of Anoka

State of Minnesota

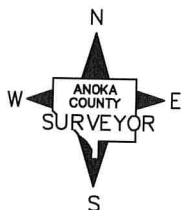
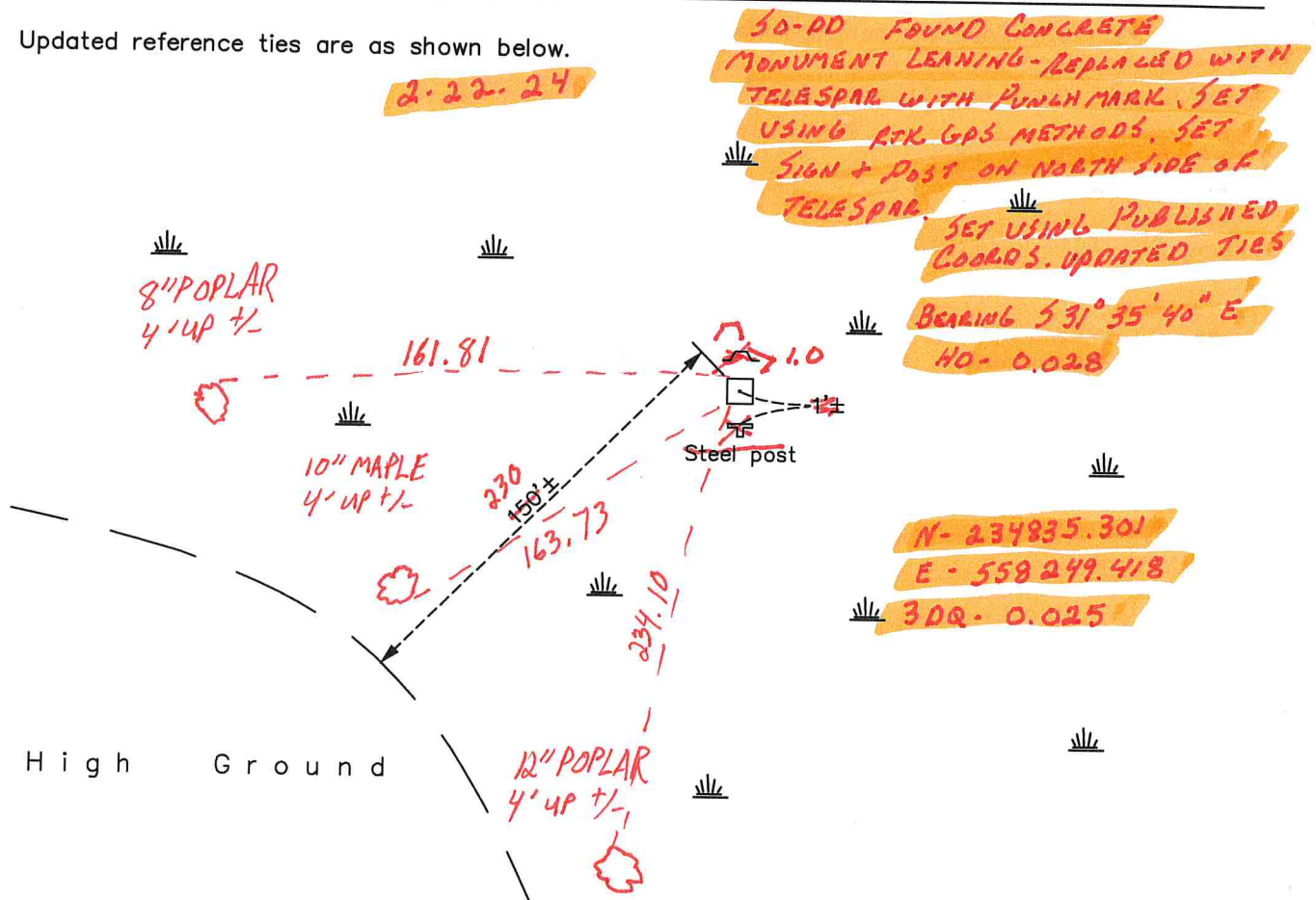
East 1/4 Corner of Sec. 26 Township 34 Range 22

On the 20th day of June, 1967, the described corner was evidenced by a concrete monument

and to perpetuate the location of said corner, at the exact location thereof, a permanent marker was placed consisting of the same concrete monument with a sign and post on the north side

AND on the ~~20th~~ ^{4th} day of ~~June~~ ^{April}, ~~1967~~ ²⁰²², said permanent marker was found 0.8' ± under ~~water~~ although not clearly visible. No ties available.

Updated reference ties are as shown below.



Revision Date

5/25/2022

N.A.D. 1983 Coordinates
(1996 Adjustment)

County Project Coordinates

Northing 234835.3245

Easting 558249.4039

Date 2/10/04

I hereby certify that this United States public
land survey monument record is correct and
complete to the best of my knowledge and belief.

Date

David Zieglmeier Anoka County Surveyor
Minnesota License Number 46179

CERTIFICATE OF LOCATION OF GOVERNMENT CORNER

County of Anoka

State of Minnesota

Index 1063

East 1/4 Corner of Sec. 26 Township 34 Range 22

On the 20th day of June, 1967, the described corner was evidenced by a concrete monument

and to perpetuate the location of said corner, at the exact location thereof, a permanent marker was placed consisting of the same concrete monument with a sign and post on the north side

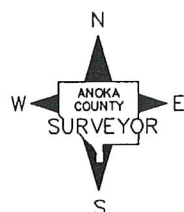
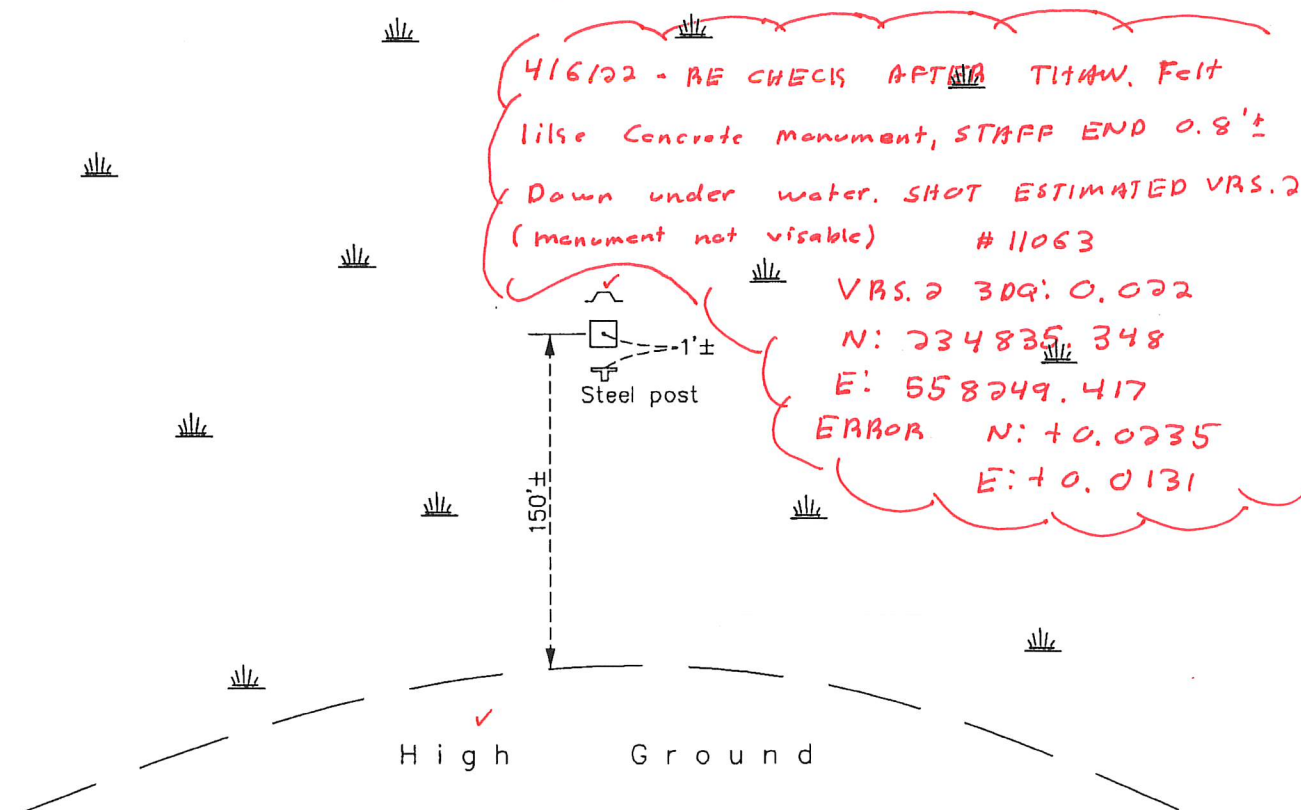
AV, TS -

AND on the ^{13th}~~18th~~ day of ^{January}~~February~~, ²⁰²²~~2014~~, said permanent marker was found leaning southwesterly and the ties were updated Concrete not found down 0.5'±. Rebar

Updated reference ties are as shown below.

found near sign & post. No Avail. Ties.

* Reset likely Needed



Revision Date

12/15/15

N.A.D. 1983 Coordinates
(1996 Adjustment)

County Project Coordinates	
Northing	234835.3245
Easting	558249.4039
Date	2/10/04

ERROR

I hereby certify that this United States public land survey monument record is correct and complete to the best of my knowledge and belief.

Date 12/15/15

Larry D. Hoium, Anoka County Surveyor
Minnesota License Number 18165