

CERTIFICATE OF LOCATION OF GOVERNMENT CORNER

County of Anoka

State of Minnesota

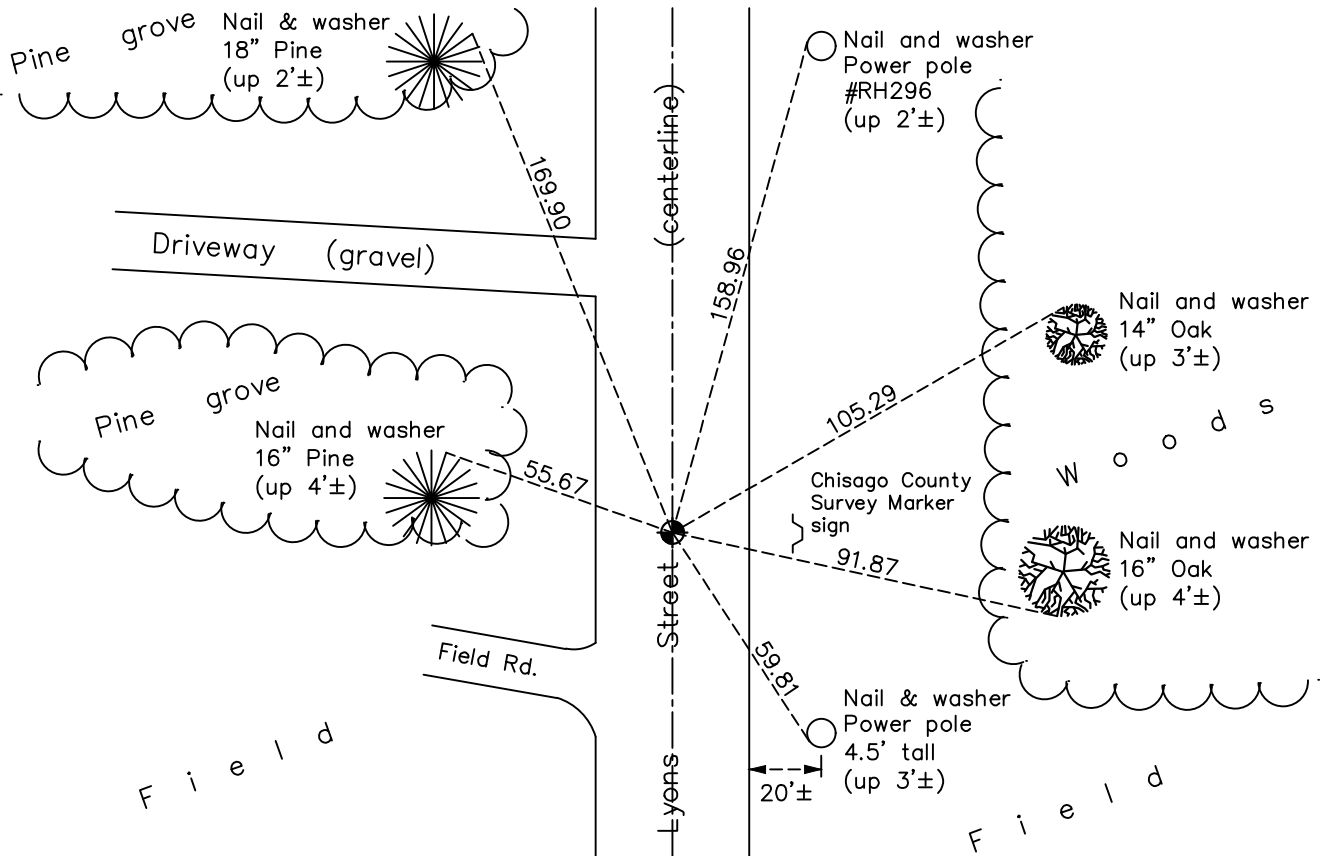
East 1/4 Corner of Sec. 25 Township 34 Range 22

On the 4th day of February, 1975, the described corner was evidenced by a cast iron monument

and to perpetuate the location of said corner, at the exact location thereof, a permanent marker was placed consisting of an aluminum disk marked "Chisago County Survey Marker" set by Chisago County Surveyor

AND on the 14th day of December, 2021, said permanent marker was found and the ties were updated

Updated reference ties are as shown below.



N.A.D. 1983 Coordinates
(1996 Adjustment)

County Project Coordinates	
Northing	<u>234722.3338</u>
Easting	<u>563538.5806</u>
Date	<u>6/03/03</u>

Revision Date
03/14/2022

I hereby certify that this United States public land survey monument record is correct and complete to the best of my knowledge and belief.

David Zieglmeier Date 3/25/24

David M. Zieglmeier, Anoka County Surveyor
Minnesota License Number 46179

HISTORY OF GOVERNMENT CORNER

Page No. 21

County of Anoka

State of Minnesota

East 1/4 Corner of Sec. 25 Township 34 Range 22

CORNER HISTORY:

February 4, 1975 - Found cast iron monument down 1.6'± using ties of Don Hult. Updated ties.

August 1, 1975 - Found cast iron monument and updated ties.

August 9, 1978 - Found cast iron monument down 1.5'± and updated ties.

August 27, 1981 - Found cast iron monument and updated ties.

June 14, 1993 - Found cast iron monument and updated ties.

June 3, 2003 - Found cast iron monument down 1.5'± and updated ties. Established NAD 1983 (1996 adj.) Anoka County project coordinates by static GPS methods (N: 234722.3338, E: 563538.5806).

Unknown date - Found cast iron monument down 2.5'± and set construction ties prior to road construction. Monument not removed.

August 20, 2010 - Found monument and verified position by VRS and static GPS methods.

August 24, 2010 - Found cast iron monument and re-measured construction ties.

August 27, 2010 - Found Chisago County monument, measured construction ties and verified position by static GPS methods.

2010 - Found Chisago County aluminum disk and updated ties.

February 5, 2014 - Found Chisago County aluminum disk and updated ties.

April 8, 2016 - Found Chisago County aluminum disk and checked position by static GPS methods.

October 5, 2018 - Found Chisago County aluminum disk. Verified position by VRS GPS methods. Updated ties.

December 14, 2021 - Found Chisago County aluminum disk. Verified position by VRS GPS methods. Updated ties.