

# CERTIFICATE OF LOCATION OF GOVERNMENT CORNER

County of Anoka

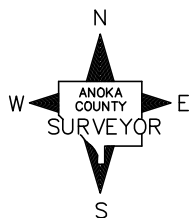
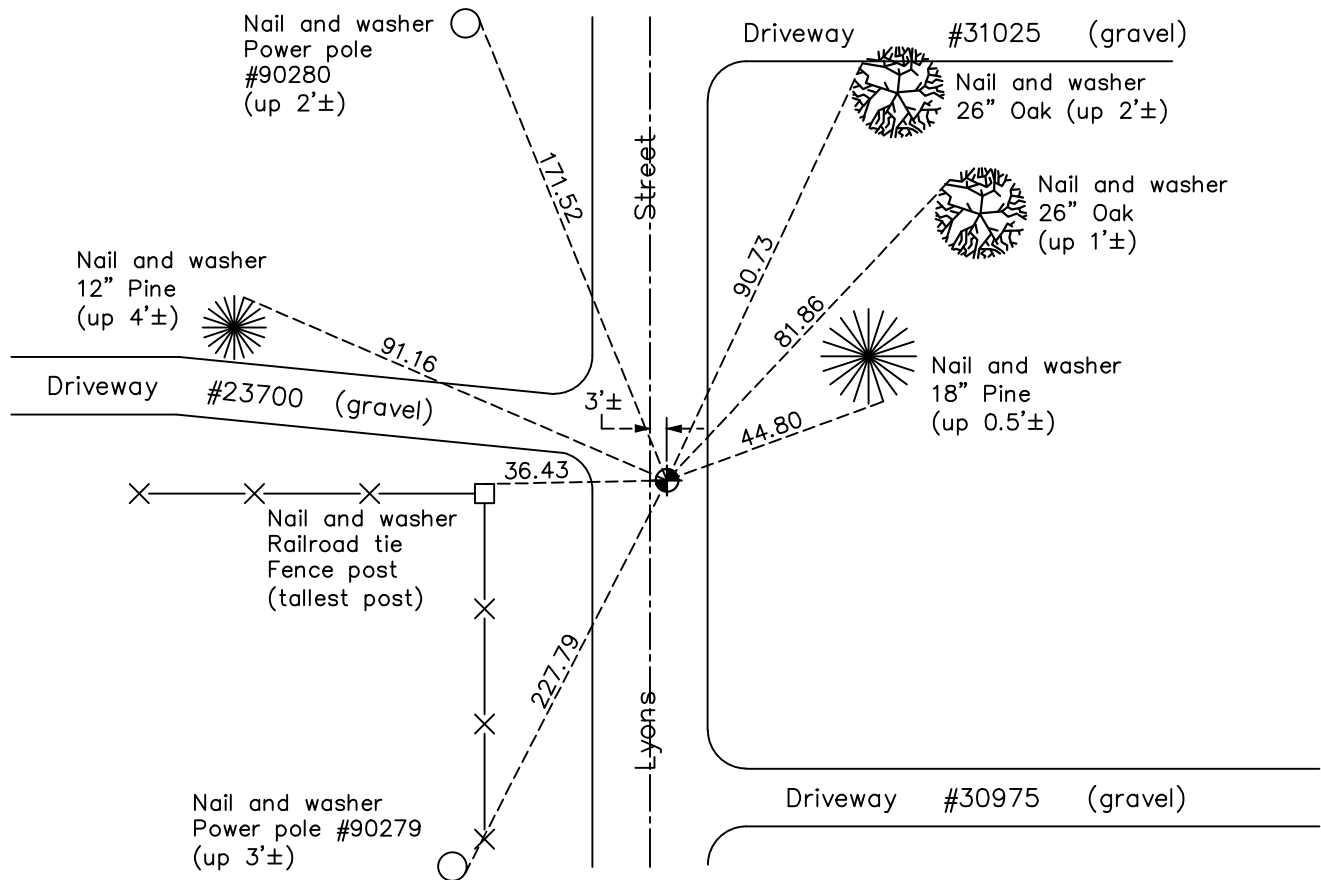
State of Minnesota

## Southeast Corner of Sec. 25 Township 34 Range 22

On the 17 day of June, 2009, the described corner was evidenced by a cast iron monument was found and replace after road construction by Chisago County Surveyor \_\_\_\_\_ and to perpetuate the location of said corner, at the exact location thereof, a permanent marker was placed consisting of an aluminum disk marked "Chisago County Survey Marker" set by \_\_\_\_\_ Chisago County Surveyor \_\_\_\_\_

AND on the 4th day of January, 2022, said permanent marker was found and the ties \_\_\_\_\_ were updated \_\_\_\_\_

Updated reference ties are as shown below.



N.A.D. 1983 Coordinates  
(1996 Adjustment)

County Project Coordinates	
Northing	<u>232075.8910</u>
Easting	<u>563614.9709</u>
Date	<u>8/27/10</u>

I hereby certify that this United States public land survey monument record is correct and complete to the best of my knowledge and belief.

*David Zieglmeier* Date 3/25/24

David M. Zieglmeier, Anoka County Surveyor  
Minnesota License Number 46179

Revision Date  
03/14/2022

# HISTORY OF GOVERNMENT CORNER

Page No. 22

County of Anoka

State of Minnesota

## Southeast Corner of Sec. 25 Township 34 Range 22

### **CORNER HISTORY:**

February 6, 1975 - Found cast iron monument down 1.5'± set by Don Hult. Updated ties to monument.

August 9, 1978 - Found cast iron monument and updated ties.

August 27, 1981 - Found cast iron monument and updated ties.

August 11, 1986 - Found cast iron monument and updated ties.

June 14, 1993 - Found cast iron monument and updated ties.

June 3, 2003 - Found cast iron monument and updated ties. Established NAD 1983 (1996 adj.) Anoka County project coordinates by static GPS methods. N=232076.0451 E=563615.1316

June 17, 2009 - Monument position to be disturbed by road construction. Chisago County surveyor discovered an existing cast iron monument down 2.5' while removing the surface monument. Position of the lower monument was held for the remonumentation.

August 24, 2010 - Found Chisago County aluminum disk, measured construction ties and verified position by static GPS methods. N=232075.891 E=563614.9709

\*\*\* this position is S 0.15' & W 0.18' from the 2003 static position

February 14, 2014 - Found Chisago County aluminum disk. Verified position by VRS GPS methods. Updated ties.

October 5, 2018 - Found Chisago County aluminum disk. Verified position by VRS GPS methods. Updated ties.

January 4, 2022 - Found Chisago County aluminum disk. Verified position by VRS GPS methods. Updated ties.