

CERTIFICATE OF LOCATION OF GOVERNMENT CORNER

County of Anoka

State of Minnesota

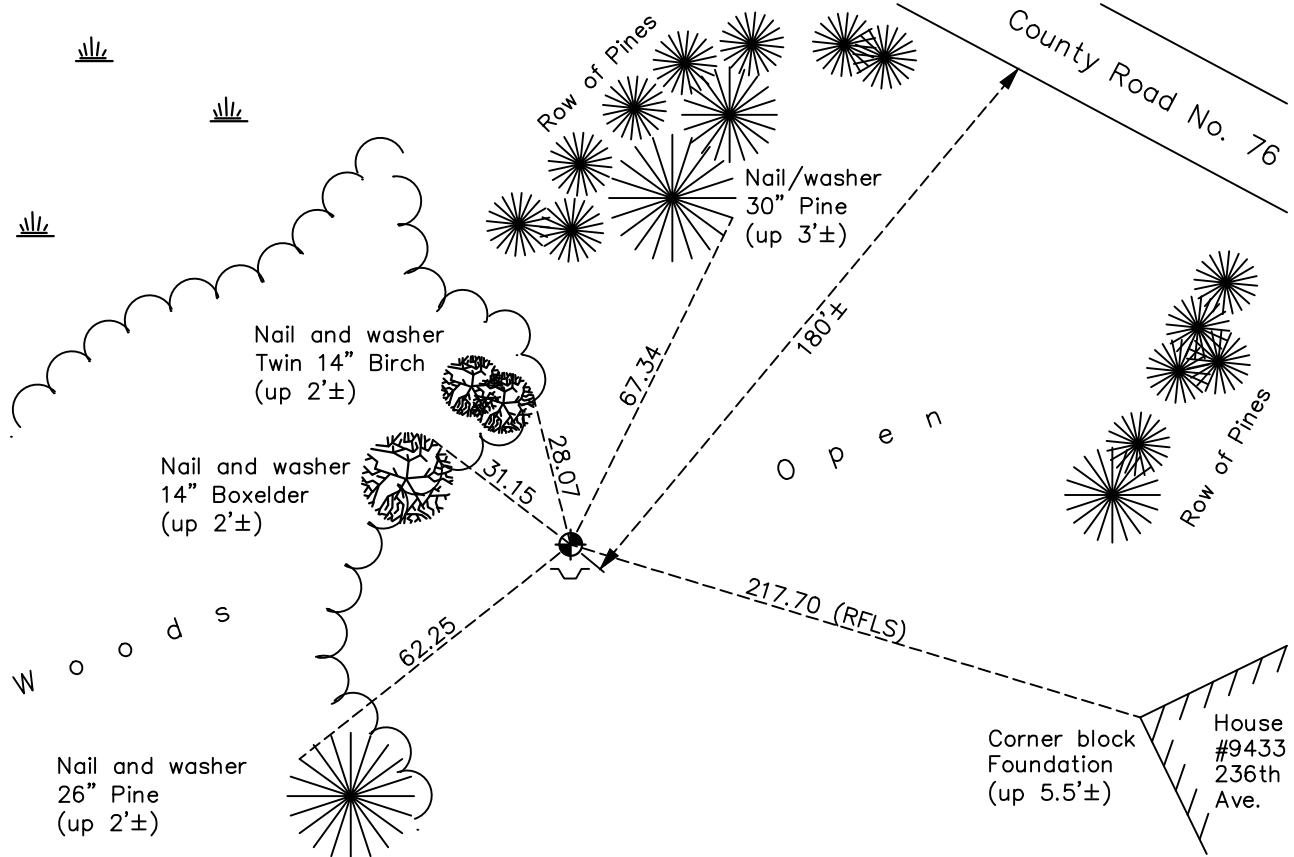
South 1/4 Corner of Sec. 25 Township 34 Range 22

On the 28th day of May, 1975, the described corner was evidenced by area resurvey

and to perpetuate the location of said corner, at the exact location thereof, a permanent marker was placed consisting of a cast iron monument

AND on the 15th day of December, 2021, said permanent marker was found down 0.5'± and the ties were updated. Found sign and post on south side.

Updated reference ties are as shown below.



N

 S

ANOKA COUNTY
SURVEYOR

Revision Date
03/14/2022

N.A.D. 1983 Coordinates
(1996 Adjustment)

County Project Coordinates	
Northing	<u>232110.4403</u>
Easting	<u>560972.0925</u>
Date	<u>6/09/03</u>

I hereby certify that this United States public land survey monument record is correct and complete to the best of my knowledge and belief.

David Zieglermeier Date 3/25/24

David M. Zieglermeier, Anoka County Surveyor
 Minnesota License Number 46179

HISTORY OF GOVERNMENT CORNER

Page No. 23

County of Anoka

State of Minnesota

South 1/4 Corner of Sec. 25 Township 34 Range 22

CORNER HISTORY:

May 28, 1975 - Set cast iron monument flush using area resurvey and established ties to monument.

August 9, 1978 - Found cast iron monument and updated ties.

June 14, 1982 - Found cast iron monument and updated ties.

August 14, 1986 - Found cast iron monument and updated ties.

June 14, 1993 - Found cast iron monument and updated ties.

June 9, 2003 - Established NAD 1983 (1996 adj.) Anoka County project coordinates by static GPS methods.

January 17, 2014 - Found cast iron monument down 0.3'± and updated ties.

December 28, 2018 - Found cast iron monument down 0.5'±. Verified position by VRS GPS methods. Updated ties.

December 15, 2021 - Found cast iron monument down 0.5'±. Verified position by VRS GPS methods. Updated ties.