

CERTIFICATE OF LOCATION OF GOVERNMENT CORNER

County of Anoka

State of Minnesota

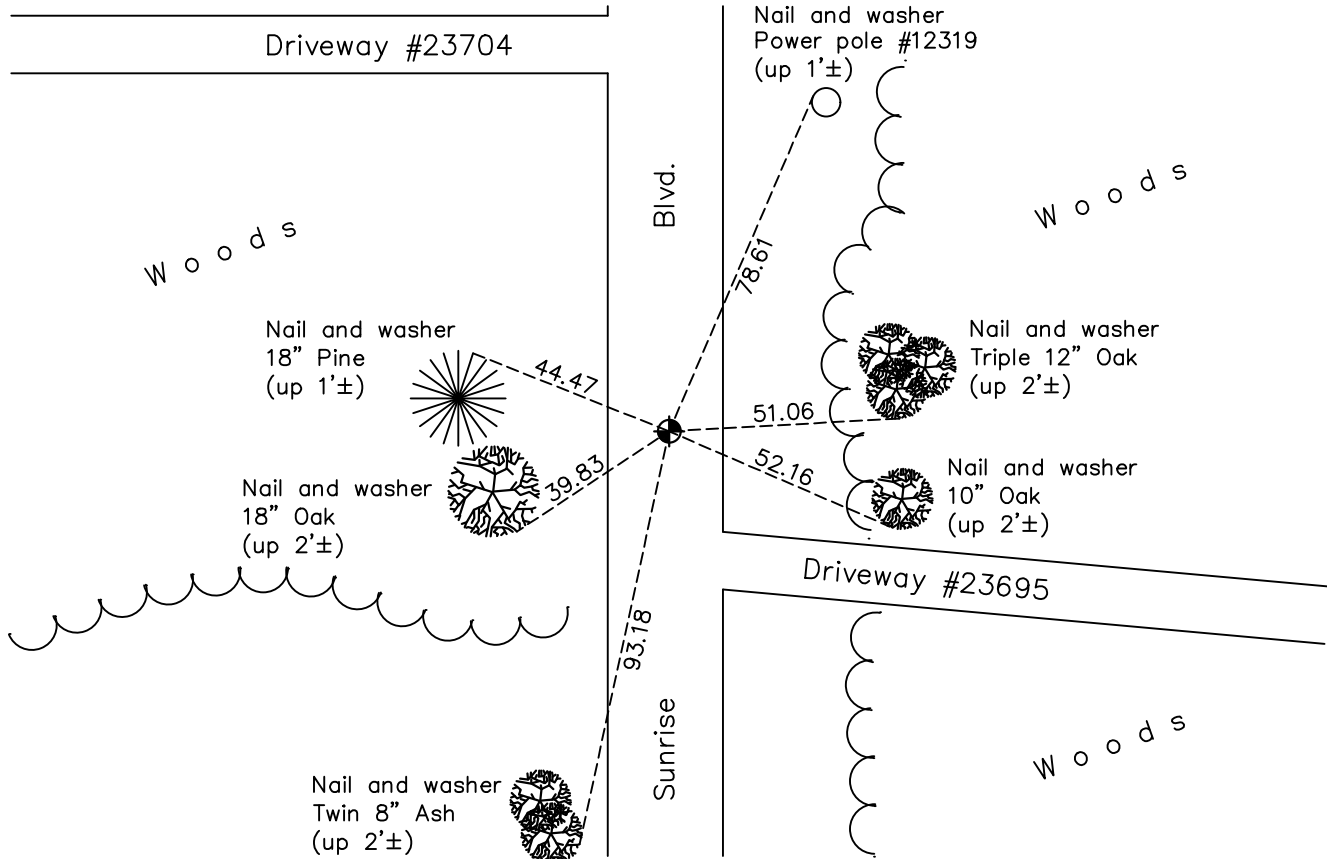
Southeast Corner of Sec. 26 Township 34 Range 22

On the 17th day of June, 1959, the described corner was evidenced by a cast iron monument with a 3/4" iron pipe to the north

and to perpetuate the location of said corner, at the exact location thereof, a permanent marker was placed consisting of a cast iron monument

AND on the 7th day of January, 2022, said permanent marker was found flush and the ties were updated

Updated reference ties are as shown below.



N.A.D. 1983 Coordinates
(1996 Adjustment)

County Project Coordinates	
Northing	<u>232183.6808</u>
Easting	<u>558339.1586</u>
Date	<u>6/03/03</u>

Revision Date
03/14/2022

I hereby certify that this United States public land survey monument record is correct and complete to the best of my knowledge and belief.

David Zieglmeier Date 3/25/24

David M. Zieglmeier, Anoka County Surveyor
Minnesota License Number 46179

HISTORY OF GOVERNMENT CORNER

Page No. 24

County of Anoka

State of Minnesota

Southeast Corner of Sec. 26 Township 34 Range 22

CORNER HISTORY:

June 17, 1959 - Set cast iron monument by N.C. Hoiium and established ties to monument.

February 4, 1963 - Found cast iron monument down 0.3'± with a 3/4" iron pipe on the north side. Updated ties.

June 20, 1967 - Found cast iron monument and updated ties.

July 8, 1971 - Found cast iron monument and updated ties.

August 4, 1975 - Found cast iron monument and updated ties.

August 9, 1978 - Found cast iron monument and updated ties.

May 28, 1982 - Found cast iron monument and updated ties.

February 2, 1987 - Found cast iron monument and updated ties.

June 14, 1993 - Found cast iron monument and updated ties.

June 3, 2003 - Established NAD 1983 (1996 adj.) Anoka County project coordinates by static GPS methods.

Unknown date - Found cast iron monument broken due to reclaim road construction. Set construction ties off of center fin of cast iron monument.

September 10, 2012 - Set cast iron monument using static GPS methods after road construction. Updated ties.

February 13, 2014 - Found cast iron monument and updated ties.

January 7, 2018 - Found cast iron monument flush. Verified position by VRS GPS methods. Updated ties.

January 7, 2022 - Found cast iron monument flush. Verified position by VRS GPS methods. Updated ties.