

CERTIFICATE OF LOCATION OF GOVERNMENT CORNER

County of Anoka

State of Minnesota

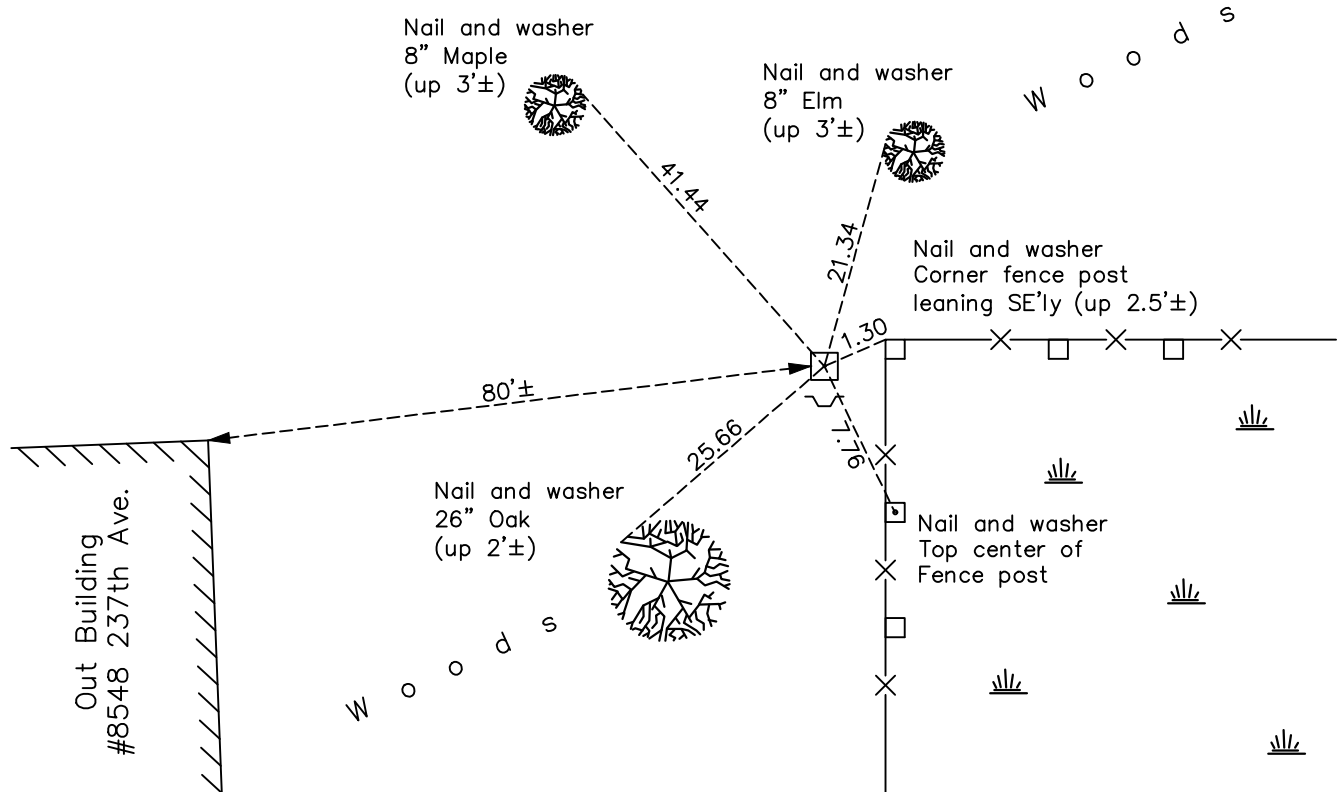
South 1/4 Corner of Sec. 26 Township 34 Range 22

On the 16th day of August, 1966, the described corner was evidenced by a concrete monument

and to perpetuate the location of said corner, at the exact location thereof, a permanent marker was placed consisting of the same concrete monument with a sign and post on the south side

AND on the 4th day of December, 2023, said permanent marker was found up 0.5'± leaning, removed. Set Telspar w/ punched cap, up 0.5'± set to Published Coordinates. Tie verified and updated.

Updated reference ties are as shown below.



Revision Date
3/7/2024

N.A.D. 1983 Coordinates
 (1996 Adjustment)

County Project Coordinates	
Northing	<u>232250.7443</u>
Easting	<u>555699.6138</u>
Date	<u>1/21/04</u>

I hereby certify that this United States public land survey monument record is correct and complete to the best of my knowledge and belief.

David Zieglmeier Date 3/25/24

David M. Zieglmeier, Anoka County Surveyor
 Minnesota License Number 46179

HISTORY OF GOVERNMENT CORNER

Page No. 25

County of Anoka

State of Minnesota

South 1/4 Corner of Sec. 26 Township 34 Range 22

CORNER HISTORY:

October 1854 - This corner was established by Hiram Taylor, Deputy Surveyor. Taylor marked this position by "set quarter section post" with two bearing trees marked as accessories.

August 16, 1966 - Found concrete monument up 0.3'±. Updated ties.

7/8/71, 8/4/75, 8/11/78, 6/16/82, 8/14/86, 6/28/95 - Found concrete monument. Updated ties.

January 21, 2004 - Established NAD 1983 (1996 adj.) Anoka County project coordinates by static GPS method.

January 15, 2014 - Found concrete monument. Updated ties.

March 13, 2019 - Found concrete monument up 0.5'±. Verified position by VRS GPS methods. Updated ties.

January 13, 2022 - Found concrete monument up 0.5'± leaning SE'ly. Verified position by VRS GPS methods. Updated ties.

December 4, 2023 - Found concrete monument leaning, removed. Set 2"x2"x6" Telespar w/ "County Surveyor" cap and punch mark up 6"±. Set to Anoka County NAD 1983 (1996 adj.) project coordinates using RTK GPS methods and historical ties. Updated ties.