

# CERTIFICATE OF LOCATION OF GOVERNMENT CORNER

County of Anoka

State of Minnesota

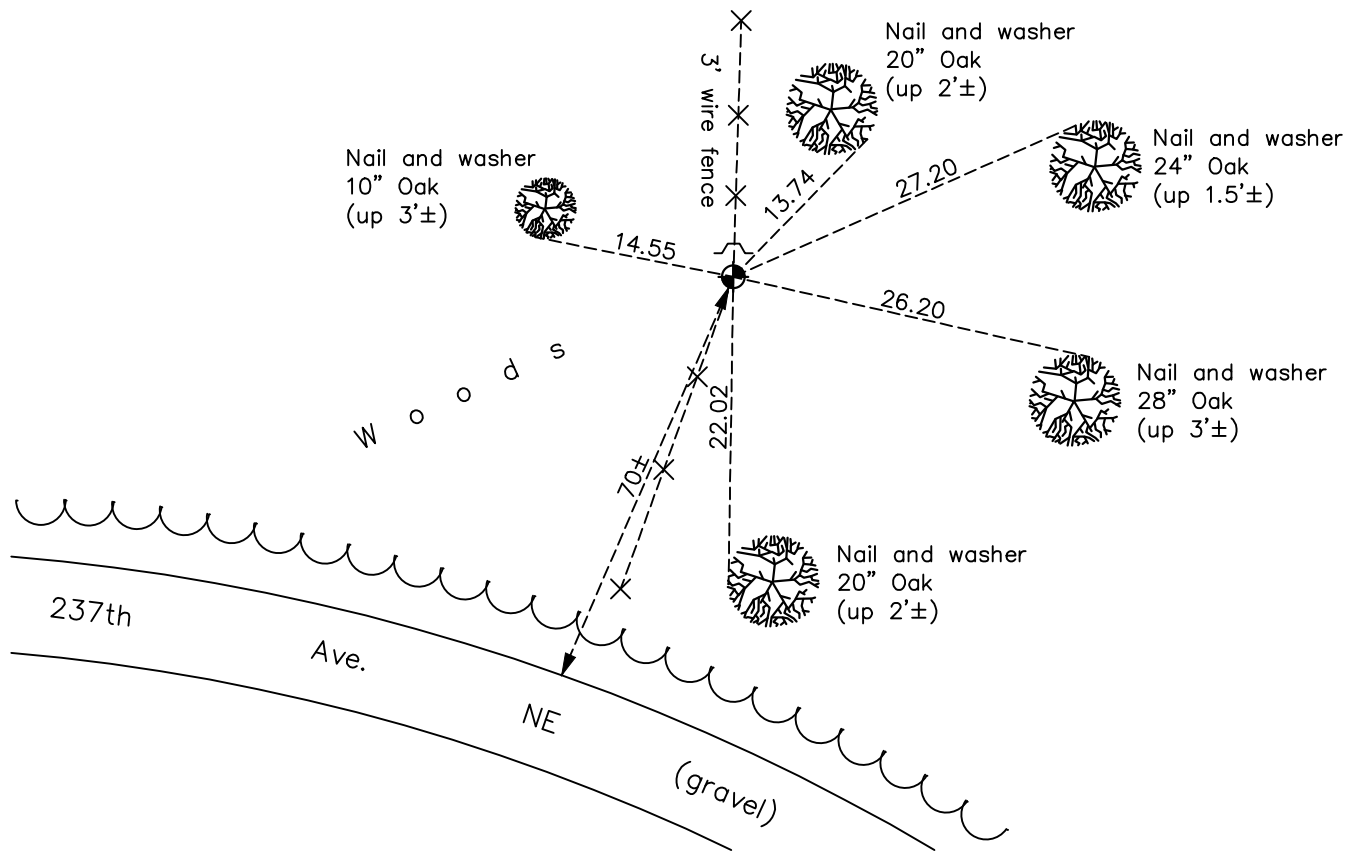
## South 1/4 Corner of Sec. 27 Township 34 Range 22

On the 16th day of March, 1967, the described corner was evidenced by area resurvey

and to perpetuate the location of said corner, at the exact location thereof, a permanent marker was placed consisting of a cast iron monument with a sign and post on the north side

AND on the 14th day of December, 2021, said permanent marker was found up 0.1'± and the ties were updated

Updated reference ties are as shown below.



Revision Date  
03/14/2022

N.A.D. 1983 Coordinates  
 (1996 Adjustment)

County Project Coordinates	
Northing	<u>232423.6387</u>
Easting	<u>550403.5261</u>
Date	<u>1/29/04</u>

I hereby certify that this United States public land survey monument record is correct and complete to the best of my knowledge and belief.

*David Zieglermeier* Date 3/25/24

David M. Zieglermeier, Anoka County Surveyor  
 Minnesota License Number 46179

# HISTORY OF GOVERNMENT CORNER

Page No. 27

County of Anoka

State of Minnesota

South 1/4 Corner of Sec. 27 Township 34 Range 22

## **CORNER HISTORY:**

March 16, 1967 - Set cast iron monument flush using area resurvey and established ties to monument.

June 21, 1967 - Found cast iron monument up 0.2' and updated ties.

July 8, 1971 - Found cast iron monument and updated ties.

August 4, 1975 - Found cast iron monument and updated ties.

August 10, 1978 - Found cast iron monument and updated ties.

June 1, 1982 - Found cast iron monument and updated ties.

June 21, 1993 - Found cast iron monument and updated ties.

January 29, 2004 - Established NAD 1983 (1996 adj.) Anoka County project coordinates by static GPS methods.

January 17, 2014 - Found cast iron monument up 0.1'± and updated ties.

December 31, 2018 - Found cast iron monument up 0.1'±. Verified position by VRS GPS methods. Updated ties.

December 14, 2021 - Found cast iron monument up 0.1'± and updated ties.