

CERTIFICATE OF LOCATION OF GOVERNMENT CORNER

County of Anoka

State of Minnesota

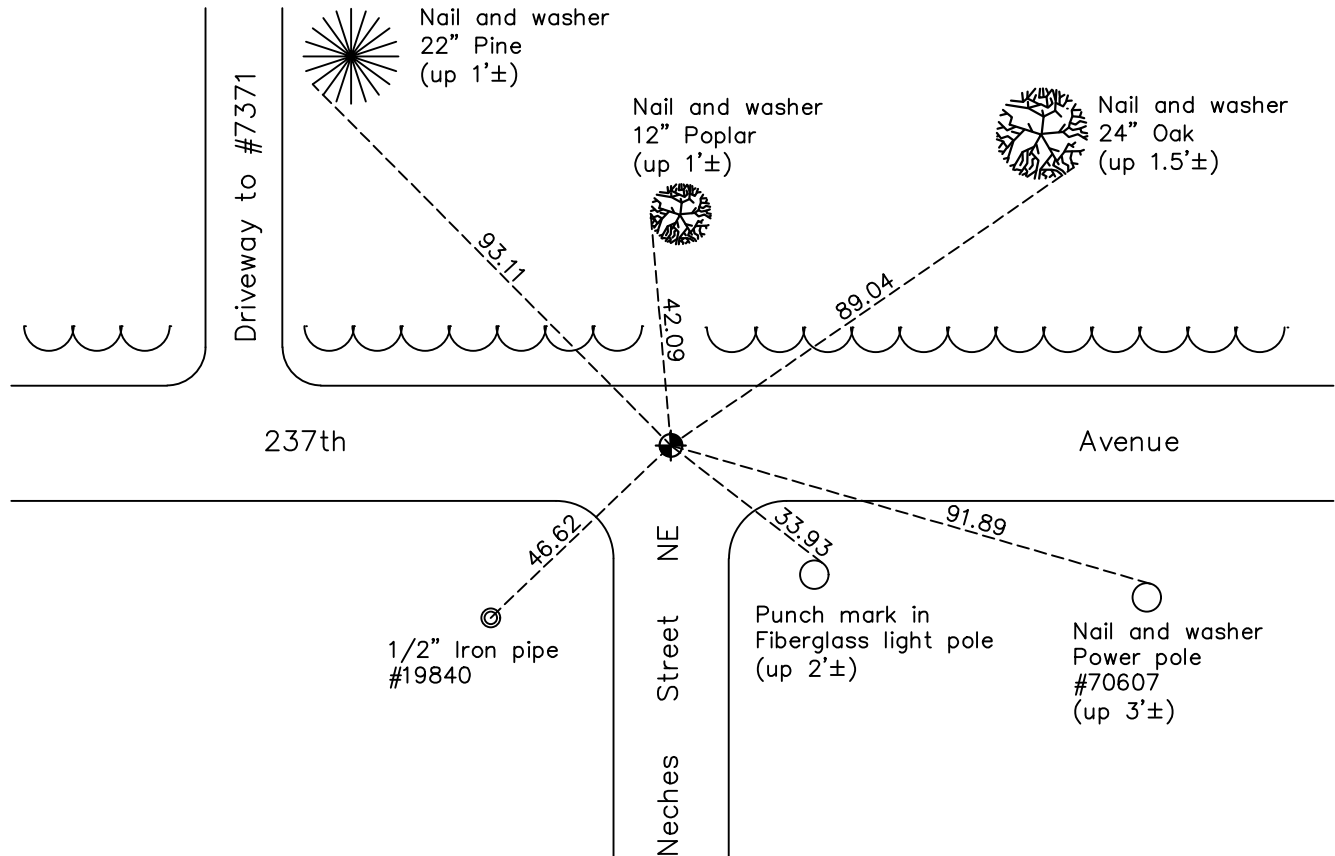
Southeast Corner of Sec. 28 Township 34 Range 22

On the 16th day of March, 1967, the described corner was evidenced by area resurvey

and to perpetuate the location of said corner, at the exact location thereof, a permanent marker was placed consisting of a cast iron monument

AND on the 5th day of January, 2022, said permanent marker was found flush and the ties were updated

Updated reference ties are as shown below.



Revision Date
03/14/2022

N.A.D. 1983 Coordinates
 (1996 Adjustment)

County Project Coordinates	
Northing	<u>232530.0602</u>
Easting	<u>547736.7064</u>
Date	<u>6/04/03</u>

I hereby certify that this United States public land survey monument record is correct and complete to the best of my knowledge and belief.

David Zieglmeier Date 3/25/24

David M. Zieglmeier, Anoka County Surveyor
 Minnesota License Number 46179

HISTORY OF GOVERNMENT CORNER

Page No. 28

County of Anoka

State of Minnesota

Southeast Corner of Sec. 28 Township 34 Range 22

CORNER HISTORY:

March 16, 1967 - Set cast iron monument down 0.4'± using area resurvey and established ties to monument.

June 21, 1967 - Found cast iron monument and updated ties.

July 8, 1971 - Found cast iron monument and updated ties.

August 4, 1975 - Found cast iron monument and updated ties.

June 30, 1976 - Reset cast iron monument using corner ties.

August 10, 1978 - Found cast iron monument and updated ties.

June 1, 1982 - Found cast iron monument and updated ties.

December 9, 1988 - Found cast iron monument and updated ties.

June 16, 1993 - Found cast iron monument and updated ties.

July 14, 1999 - Found cast iron monument and updated ties.

September 14, 1999 - Found cast iron monument and raised. Updated ties.

June 4, 2003 - Established NAD 1983 (1996 adj.) Anoka County project coordinates by static GPS methods.

June 10, 2004 - Found cast iron monument and updated ties.

February 13, 2014 - Found cast iron monument. Verified position by VRS GPS methods. Updated ties.

January 8, 2019 - Found cast iron monument. Verified position by VRS GPS methods. Updated ties.

January 5, 2022 - Found cast iron monument flush. Verified position by VRS GPS methods. Updated ties.