

# CERTIFICATE OF LOCATION OF GOVERNMENT CORNER

County of Anoka

State of Minnesota

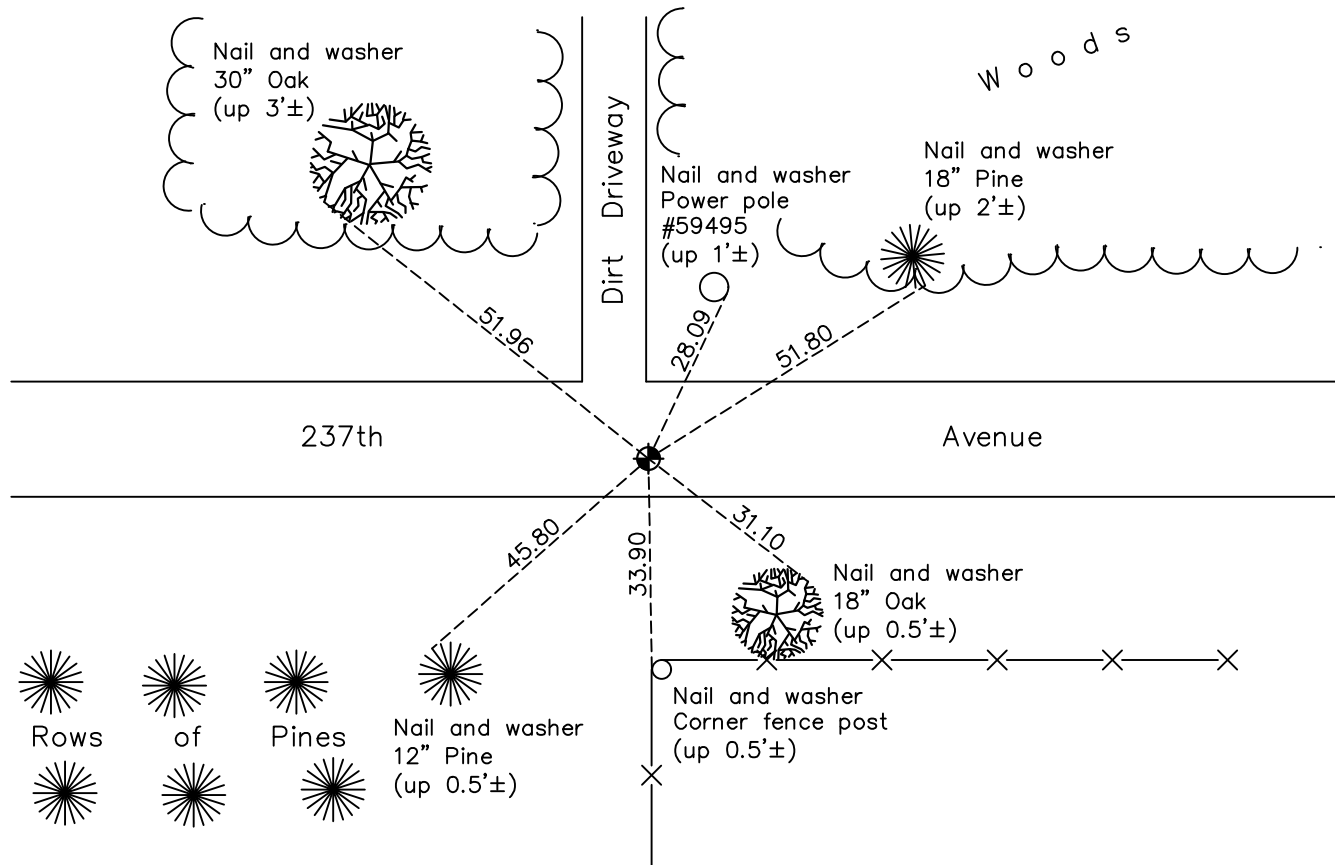
## South 1/4 Corner of Sec. 28 Township 34 Range 22

On the 28th day of March, 1966, the described corner was evidenced by a 1" X 5' square steel rod

and to perpetuate the location of said corner, at the exact location thereof, a permanent marker was placed consisting of a cast iron monument

AND on the 16th day of February, 2022, said permanent marker was found flush and the ties were updated

Updated reference ties are as shown below.



Revision Date  
 03/15/22

N.A.D. 1983 Coordinates  
 (1996 Adjustment)

County Project Coordinates	
Northing	232634.4398
Easting	545109.4982
Date	6/09/03

I hereby certify that this United States public land survey monument record is correct and complete to the best of my knowledge and belief.

*David Zieglermeier* Date 3/25/24

David M. Zieglermeier, Anoka County Surveyor  
 Minnesota License Number 46179

# HISTORY OF GOVERNMENT CORNER

Page No. 29

County of Anoka

State of Minnesota

## South 1/4 Corner of Sec. 28 Township 34 Range 22

### **CORNER HISTORY:**

March 28, 1966 - Found 1" x 5' square steel rod and replaced with a 3/4" x 2' iron pipe down 0.5'±. Updated ties to iron pipe.

June 21, 1967 - Found 3/4" iron pipe and replaced with a cast iron monument down 1'±. Updated ties.

July 8, 1971 - Found cast iron monument and updated ties.

August 4, 1975 - Found cast iron monument and updated ties.

August 10, 1978 - Found cast iron monument and updated ties.

June 1, 1982 - Found cast iron monument and updated ties.

July 5, 1986 - Found cast iron monument and updated ties.

June 16, 1993 - Found cast iron monument and updated ties.

June 9, 2003 - Established NAD 1983 (1996 adj.) Anoka County project coordinates by static GPS methods.

August 9, 2005 - Found cast iron monument and updated ties.

February 13, 2014 - Found cast iron monument. Verified position by VRS GPS methods. Updated ties.

January 8, 2019 - Found cast iron monument. Verified position by VRS GPS methods. Updated ties.

February 16, 2022 - Found cast iron monument flush to the surface. Verified position by VRS GPS methods. Updated ties.