

# CERTIFICATE OF LOCATION OF GOVERNMENT CORNER

County of Anoka

State of Minnesota

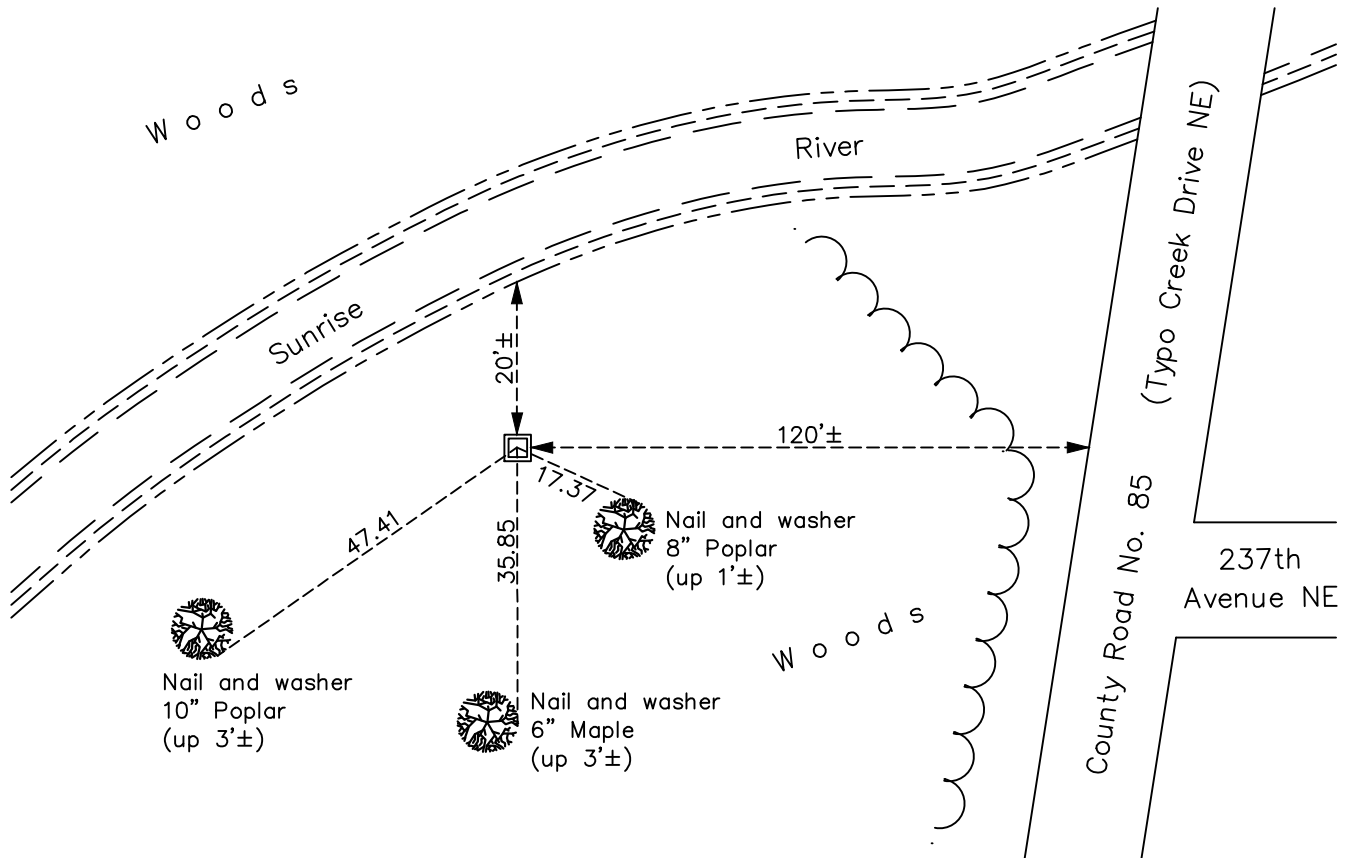
## Northeast Corner of Sec. 32 Township 34 Range 22

On the 1st day of October, 1973, the described corner was evidenced by area resurvey

and to perpetuate the location of said corner, at the exact location thereof, a permanent marker was placed consisting of a 2"x2"x8' steel Telspar monument with punchmarked 'County Surveyor' cap up 1'±

AND on the 5th day of January, 2022, said permanent marker was found up 1'± and the ties were updated

Updated reference ties are as shown below.



N.A.D. 1983 Coordinates  
(1996 Adjustment)

County Project Coordinates

Northing 232786.8504

Easting 542467.8768

Date 11/03/03

Revision Date

03/15/22

I hereby certify that this United States public land survey monument record is correct and complete to the best of my knowledge and belief.

*David Zieglermeier* Date 3/25/24

David M. Zieglermeier, Anoka County Surveyor

Minnesota License Number 46179

# HISTORY OF GOVERNMENT CORNER

Page No. 30

County of Anoka

State of Minnesota

## Northeast Corner of Sec. 32 Township 34 Range 22

### **CORNER HISTORY:**

October 1, 1973 - Set red and white iron pipe using area resurvey and established ties to iron pipe.

August 11, 1978 - Found red and white iron pipe and updated ties.

June 2, 1982 - Found red and white iron pipe and updated ties.

July 5, 1986 - Found red and white iron pipe and updated ties.

June 22, 1993 - Found red and white iron pipe and updated ties.

November 3, 2003 - Found red and white iron pipe and updated ties. Established NAD 1983 (1996 adj.) Anoka County project coordinates by static GPS methods.

January 14, 2014 - Found red and white iron pipe laying down and needing to be reset.

September 4, 2014 - Set a 2"x2"x8' steel Telspar monument up 1'± w/punchmarked "County Surveyor" cap using static GPS methods. Updated the ties.

January 7, 2018 - Found 2" square steel Telspar monument w/punchmarked cap up 1'±. Verified position by VRS GPS methods. Updated ties.

January 5, 2022 - Found 2" square steel Telspar monument w/punchmarked cap up 1'±. Verified position by VRS GPS methods. Updated ties.