

CERTIFICATE OF LOCATION OF GOVERNMENT CORNER

County of Anoka

State of Minnesota

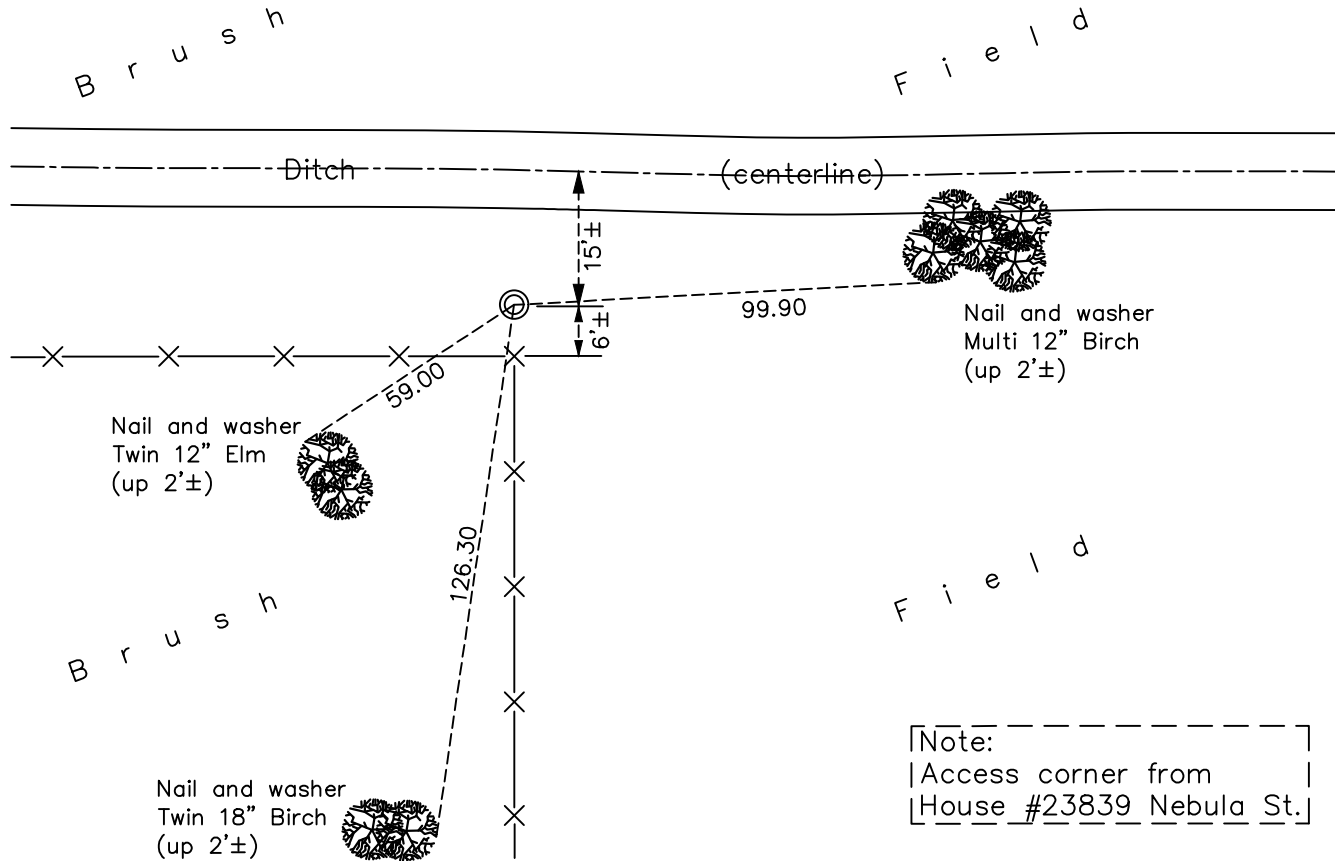
Northeast Corner of Sec. 31 Township 34 Range 22

On the 22nd day of June, 1976, the described corner was evidenced by a 1/2" iron pipe

and to perpetuate the location of said corner, at the exact location thereof, a permanent marker was placed consisting of a 3" red and white iron pipe

AND on the 13th day of January, 2022, said permanent marker was found up 2.5'± and the ties were updated

Updated reference ties are as shown below.



[Note:
 | Access corner from
 | House #23839 Nebula St.]

N
 W E
 ANOKA COUNTY SURVEYOR
 S

Revision Date
 10/15/23

N.A.D. 1983 Coordinates
 (1996 Adjustment)

County Project Coordinates	
Northing	<u>232731.9222</u>
Easting	<u>537224.8800</u>
Date	<u>2/17/04</u>

I hereby certify that this United States public land survey monument record is correct and complete to the best of my knowledge and belief.

David Zieglmeier Date 3/25/24

David M. Zieglmeier, Anoka County Surveyor
 Minnesota License Number 46179

HISTORY OF GOVERNMENT CORNER

Page No. 32

County of Anoka

State of Minnesota

Northeast Corner of Sec. 31 Township 34 Range 22

CORNER HISTORY:

October 1854 - This corner was established by Hiram Taylor, Deputy Surveyor. Taylor marked this position by "set post corner of sections 29, 30, 31 and 32" with three bearing trees marked as accessories.

June 22, 1976 - Found 1/2" iron pipe set by N.C. Hoium. Replaced with a 3" red and white iron pipe. Updated ties.

8/11/78, 6/9/82, 8/14/86, 6/22/93 - Found 3" red and white iron pipe. Updated ties.

February 17, 2004 - Established NAD 1983(1996 adj.) Anoka County project coordinates by static GPS method.
N=232731.922 E=537224.880

May 5, 2014 - Found 3" red and white iron pipe up 4'±. Leaning northeasterly. Verified position by VRS GPS methods.

August 26, 2014 - Reset original 3" red and white iron pipe by pounding it down 2'± to 2'± above the surface. Verified position by static GPS methods.

5/6/19, 1/13/22 - Found 3" red and white iron pipe up 2.5'±. Verified position by VRS GPS methods. Updated ties.

April 21, 2022 - Found 3" red and white iron pipe up 2.5'±. Verified position by VRS GPS methods.