

# CERTIFICATE OF LOCATION OF GOVERNMENT CORNER

County of Anoka

State of Minnesota

## North 1/4 Corner of Sec. 31 Township 34 Range 22

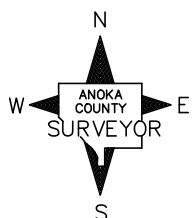
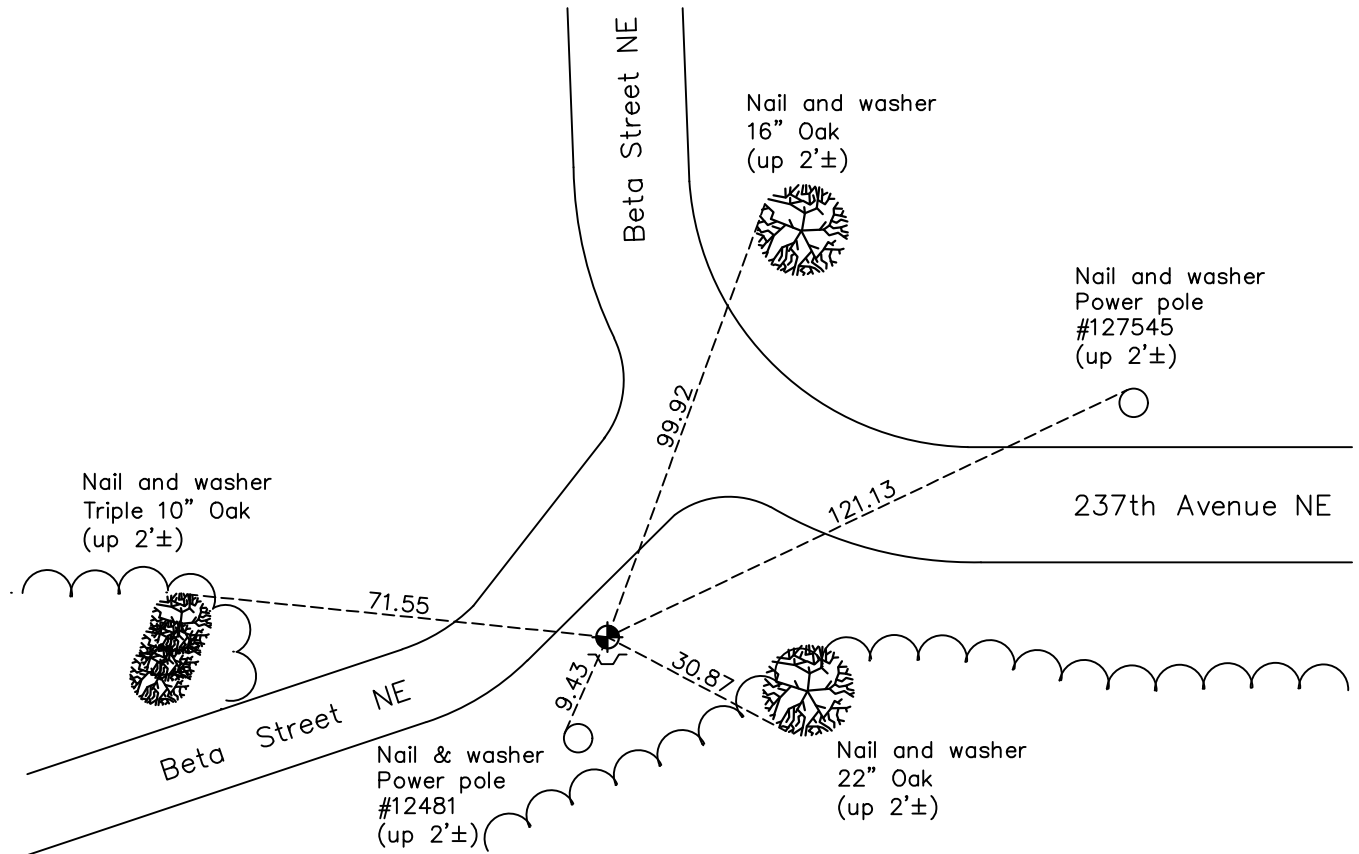
On the 19th day of November, 1971, the described corner was evidenced by an iron pipe

and to perpetuate the location of said corner, at the exact location thereof, a permanent marker was placed consisting of a cast iron monument

AND on the 5th day of January, 2022, said permanent marker was found down 0.1'±

Verified position by VRS GPS methods. Updated ties.

Updated reference ties are as shown below.



Revision Date

03/15/22

N.A.D. 1983 Coordinates  
(1996 Adjustment)

County Project Coordinates	
Northing	<u>232749.6913</u>
Easting	<u>534576.5763</u>
Date	<u>6/04/03</u>

I hereby certify that this United States public land survey monument record is correct and complete to the best of my knowledge and belief.

*David Zieglsmeier* Date 3/25/24

David M. Zieglsmeier, Anoka County Surveyor  
Minnesota License Number 46179

# HISTORY OF GOVERNMENT CORNER

Page No. 33

County of Anoka

State of Minnesota

## North 1/4 Corner of Sec. 31 Township 34 Range 22

### **CORNER HISTORY:**

October 27, 1971 - Iron pipe set by N.C. Hoium and established ties to iron pipe.

November 19, 1971 - Found iron pipe set by N.C. Hoium and updated ties.

May 1, 1975 - Found iron pipe and replaced with a cast iron monument flush. Updated ties. Set sign and post on the south side.

August 14, 1978 - Found cast iron monument and updated ties.

May 27, 1982 - Found cast iron monument and updated ties.

August 14, 1986 - Found cast iron monument and updated ties.

June 17, 1993 - Found cast iron monument and updated ties.

June 4, 2003 - Established NAD 1983 (1996 adj.) Anoka County project coordinates by static GPS methods.

January 16, 2014 - Found cast iron monument and updated ties.

April 26, 2018 - Found cast iron monument. Verified position by VRS GPS methods. Updated ties prior to construction. Removed monument.

May 15, 2019 - Set cast iron monument using static GPS methods. Verified position by VRS GPS methods. Updated ties.

January 5, 2022 - Found cast iron monument down 0.1'±. Verified position by VRS GPS methods. Updated ties