

CERTIFICATE OF LOCATION OF GOVERNMENT CORNER

County of Anoka

State of Minnesota

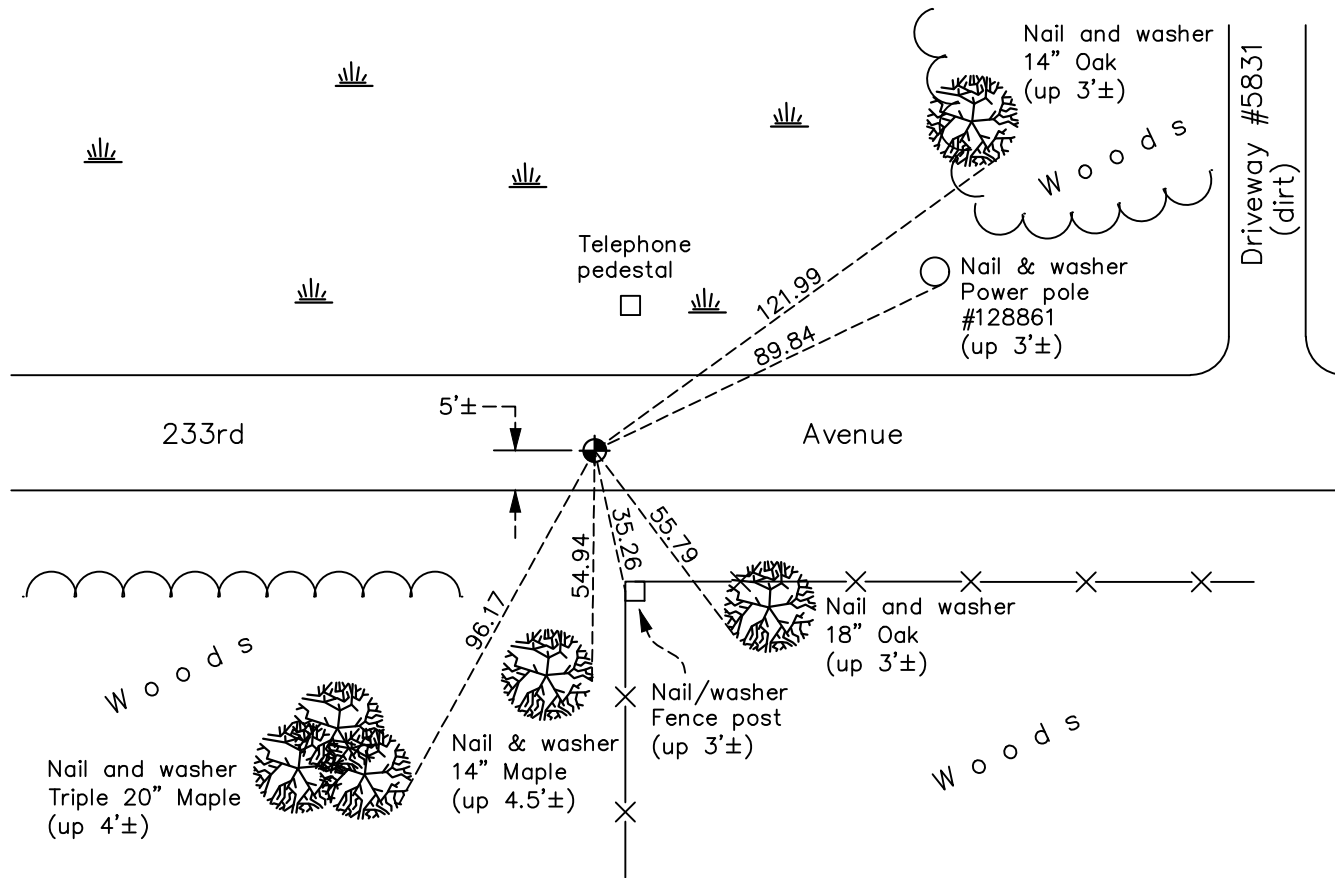
West 1/4 Corner of Sec. 32 Township 34 Range 22

On the 28th day of September, 1973, the described corner was evidenced by area resurvey

and to perpetuate the location of said corner, at the exact location thereof, a permanent marker was placed consisting of a cast iron monument

AND on the 16th day of February, 2022, said permanent marker was found flush to surface
Verified position by VRS GPS methods. Updated ties.

Updated reference ties are as shown below.



Revision Date
03/15/22

N.A.D. 1983 Coordinates
 (1996 Adjustment)

County Project Coordinates	
Northing	<u>230115.5656</u>
Easting	<u>537354.5412</u>
Date	<u>6/05/03</u>

I hereby certify that this United States public land survey monument record is correct and complete to the best of my knowledge and belief.

David Zieglmeier Date 3/25/24

David M. Zieglmeier, Anoka County Surveyor
 Minnesota License Number 46179

HISTORY OF GOVERNMENT CORNER

Page No. 34

County of Anoka

State of Minnesota

West 1/4 Corner of Sec. 32 Township 34 Range 22

CORNER HISTORY:

October 27, 1971 - Iron pipe set by N.C. Hoium and ties were established to iron pipe.

November 19, 1971 - Found iron pipe set by N.C. Hoium and updated ties.

September 28, 1973 - Set cast iron monument using area resurvey and updated ties.

August 4, 1975 - Found cast iron monument and updated ties.

August 11, 1978 - Found cast iron monument and lowered monument. Updated ties.

June 9, 1982 - Found cast iron monument and updated ties.

January 13, 1987 - Found cast iron monument down 2'± and updated ties.

June 17, 1993 - Found cast iron monument and updated ties.

June 4, 2003 - Found cast iron monument down 1.5'± and updated ties.

June 5, 2003 - Established NAD 1983 (1996 adj.) Anoka County coordinates by static GPS methods.

May 1, 2014 - Found cast iron monument down 2'±, verified position by VRS GPS methods and updated ties.

April 5, 2019 - Found cast iron monument down 2'±, verified position by VRS GPS methods and updated ties.

June 15, 2020 - Reset cast iron monument flush after road construction using static GPS methods. Verified position by VRS GPS methods. Updated ties.

February 16, 2022 - Found cast iron monument flush to surface, verified position by VRS GPS methods and updated ties.