

CERTIFICATE OF LOCATION OF GOVERNMENT CORNER

County of Anoka

State of Minnesota

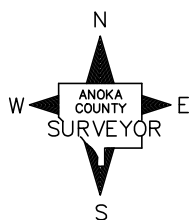
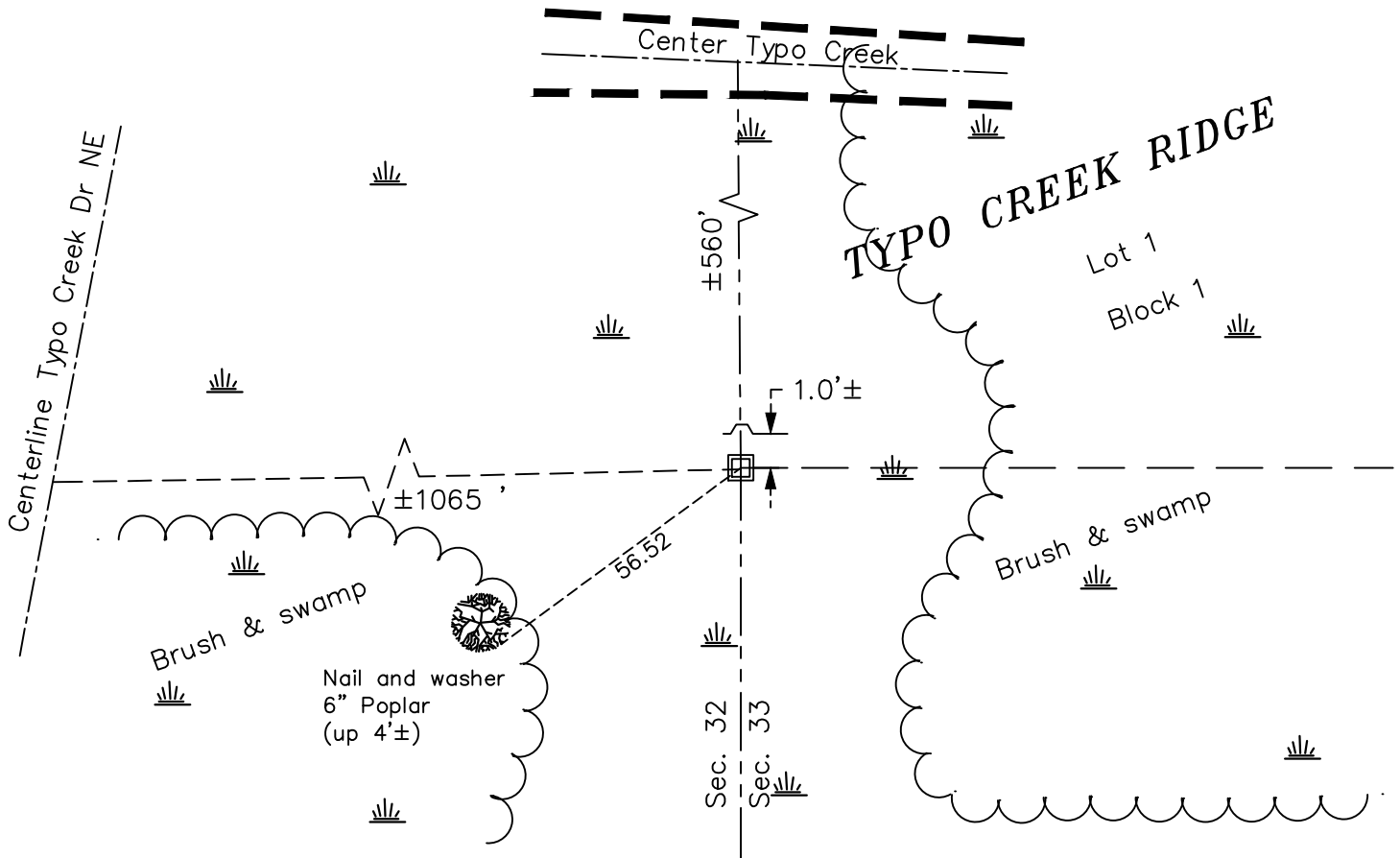
East 1/4 Corner of Sec. 32 Township 34 Range 22

On the 12th day of November, 1978, the described corner was evidenced by a 1 1/2" iron pipe was found

and to perpetuate the location of said corner, at the exact location thereof, a permanent marker was placed consisting of a red and white 2" square telspar to replace the found pipe.

AND on the 15th day of February, 2022, said permanent marker was found and adjusted to AC project coordinates using RTK GPS methods up (0.8'±). Updates ties. Sign on north side.

Updated reference ties are as shown below.



N.A.D. 1983 Coordinates
(1996 Adjustment)

County Project Coordinates	
Northing	<u>230127.7649</u>
Easting	<u>542606.2671</u>
Date	<u>2/02/05</u>

I hereby certify that this United States public land survey monument record is correct and complete to the best of my knowledge and belief.

David Zieglsmeier Date 3/25/24

David M. Zieglsmeier, Anoka County Surveyor
Minnesota License Number 46179

Revision Date
03/15/22

HISTORY OF GOVERNMENT CORNER

Page No. 35

County of Anoka

State of Minnesota

East 1/4 Corner of Sec. 32 Township 34 Range 22

CORNER HISTORY:

October 1854 - This corner was established by Hiram Taylor, Deputy Surveyor. Taylor marked this position by "set quarter section post" with no bearing trees near. Ground unfit for mound.

12/19/72, 1/13/78 - Found 1 1/2" iron pipe up 0.5'±. No ties.

November 2, 1978 - Found 1 1/2" iron pipe. Replaced with a red and white 2" x 2" telspar up 3'±. Established ties.

July 11, 1995 - Found red and white 2" x 2" telspar. Updated ties.

January 14, 2005 - Recorded plat of TYPO CREEK RIDGE shows monument at this location.

February 2, 2005 - Established NAD 1983 (1996 adj.) Anoka County project coordinates by static GPS method.

February 15, 2022 - Found red and white 2" x 2" telespar, up 4'± & leaning E/NE'ly. No ties available. Verified position by VRS GPS methods.

February 16, 2022 - Found leaning 2" x 2" Telespar up 4'±. Adjusted Telsepar, set position to NAD 1983 (1996 adj) Anoka County project coordinates using RTK GPS methods. Set "County Surveyor" cap w/ punch mark. Pounded down (up 0.8'±) w/ sign and post on north side. Updated ties. Job # 24-100.