

CERTIFICATE OF LOCATION OF GOVERNMENT CORNER

County of Anoka

State of Minnesota

Meander Corner of Sec. 34 Township 34 Range 22

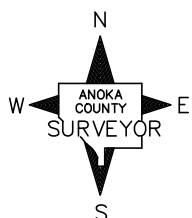
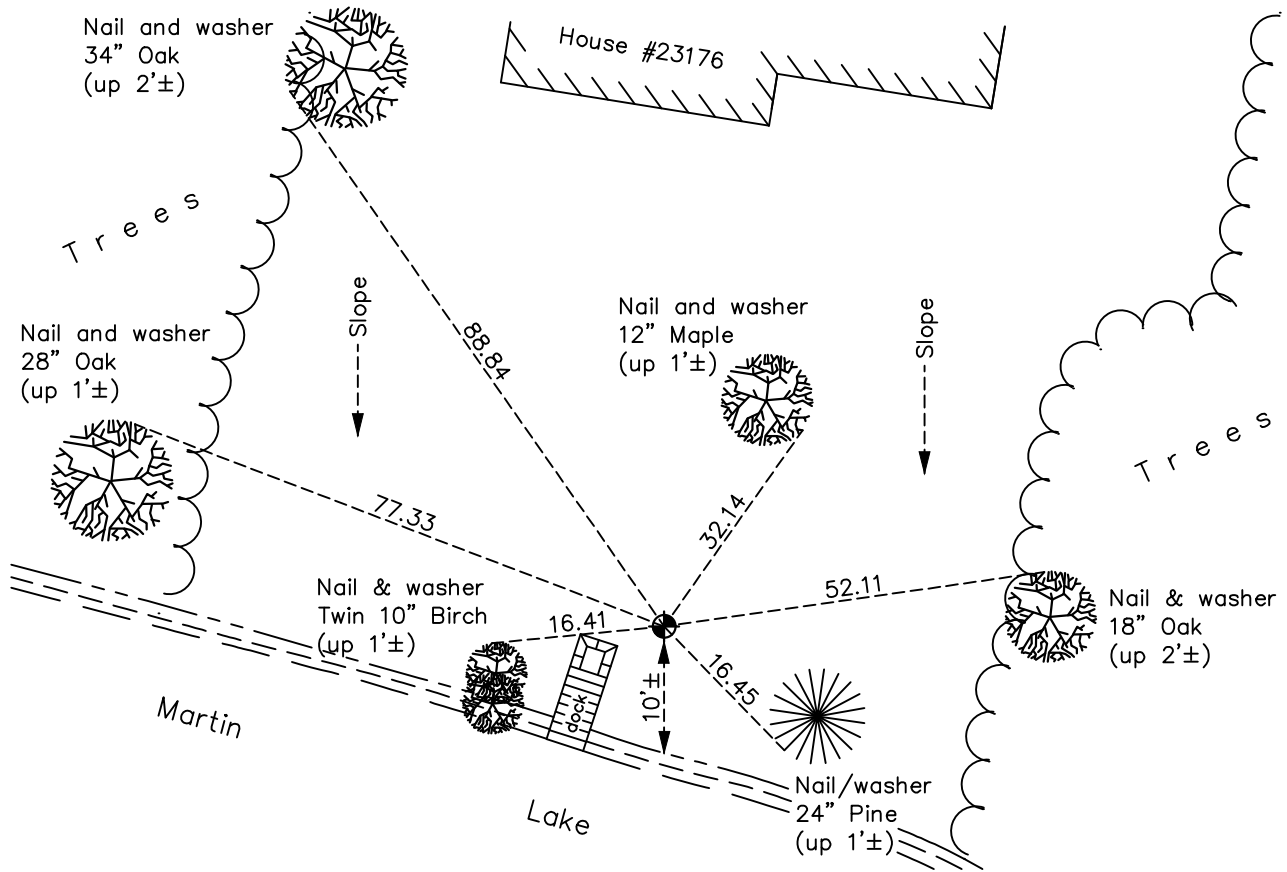
(on west line of section)

On the 27th day of April, 1966, the described corner was evidenced by a 1/2" pinched iron pipe. Also the southwest corner of Lot 1, Block 1, Hewson's Addition.

and to perpetuate the location of said corner, at the exact location thereof, a permanent marker was placed consisting of a cast iron monument

AND on the 21st day of April, 2022, said permanent marker was found down 1'± and the ties were updated

Updated reference ties are as shown below.



Revision Date
5/25/2022

N.A.D. 1983 Coordinates
(1996 Adjustment)

County Project Coordinates	
Northing	<u>228942.1993</u>
Easting	<u>547788.8844</u>
Date	<u>2/02/05</u>

I hereby certify that this United States public land survey monument record is correct and complete to the best of my knowledge and belief.

David Zieglmeier Date 3/25/24

David Zieglmeier Anoka County Surveyor
Minnesota License Number 46179

HISTORY OF GOVERNMENT CORNER

Page No. 37

County of Anoka

State of Minnesota

Meander Corner of Sec. 34 Township 34 Range 22 (on west line of section)

CORNER HISTORY:

April 27, 1966 - Found 1/2" pinched iron pipe down 0.2'± and updated ties to monument.

June 22, 1967 - Found 1/2" pinched iron pipe and replaced with a cast iron monument. Updated ties.

July 7, 1971 - Found cast iron monument and updated ties.

August 7, 1976 - Found cast iron monument and updated ties.

August 14, 1978 - Found cast iron monument and updated ties.

June 15, 1982 - Found cast iron monument and updated ties.

August 14, 1986 - Found cast iron monument and updated ties.

July 2, 1993 - Found cast iron monument and updated ties.

February 2, 2005 - Established NAD 1983 (1996 adj.) Anoka County project coordinates by static GPS methods.

May 5, 2014 - Found cast iron monument down 1'±. Verified position by VRS GPS methods. Updated ties.

April 5, 2019 - Found cast iron monument down 1'± and updated ties.

April 21, 2022 - Found cast iron monument down 1'±. Verified position by VRS GPS methods. Updated ties.