

# CERTIFICATE OF LOCATION OF GOVERNMENT CORNER

County of Anoka

State of Minnesota

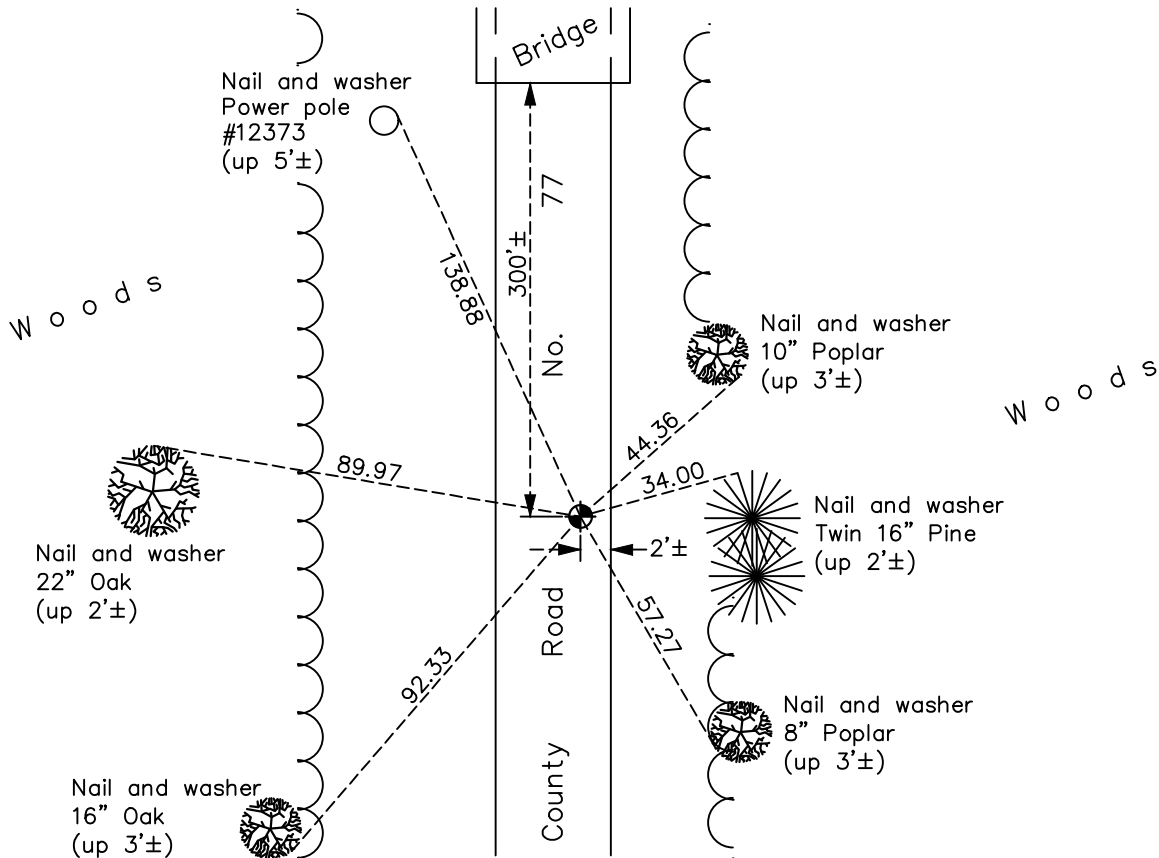
## East 1/4 Corner of Sec. 36 Township 34 Range 22

On the 24th day of June, 1975, the described corner was evidenced by area resurvey

and to perpetuate the location of said corner, at the exact location thereof, a permanent marker was placed consisting of a cast iron monument

AND on the 1st day of June, 2023, said permanent marker was found flush, pavement surrounding CIM was patched, and position was verified by ACS RTK GPS method

Updated reference ties are as shown below.



Revision Date  
 06/13/2023

N.A.D. 1983 Coordinates  
 (1996 Adjustment)

County Project Coordinates	
Northing	<u>229422.8519</u>
Easting	<u>563690.3686</u>
Date	<u>2/09/04</u>

I hereby certify that this United States public land survey monument record is correct and complete to the best of my knowledge and belief.

*David Zieglmeier* Date 6/28/23

David M. Zieglmeier, Anoka County Surveyor  
 Minnesota License Number 46179

# HISTORY OF GOVERNMENT CORNER

Page No. 40

County of Anoka

State of Minnesota

East 1/4 Corner of Sec. 36 Township 34 Range 22

## **CORNER HISTORY:**

June 4, 1975 - Set P.K. nail using area resurvey.

June 24, 1975 - Found P.K. nail and replaced with a cast iron monument flush. Established ties to monument.

August 14, 1978 - Found cast iron monument and updated ties.

July 6, 1986 - Found cast iron monument and updated ties.

June 14, 1993 - Found cast iron monument and updated ties.

May 20, 2003 - Found cast iron monument, set construction ties, updated corner ties and removed monument prior to road construction.

July 30, 2003 - Reset cast iron monument after road construction and updated ties.

February 9, 2004 - Established NAD 1983 (1996 adj.) Anoka County project coordinates by static GPS methods.

February 5, 2014 - Found cast iron monument and updated ties.

October 5, 2018 - Found cast iron monument. Verified position by VRS GPS methods. Updated ties.

January 4, 2022 - Found cast iron monument flush. Verified position by VRS GPS methods. Updated ties.

June 1, 2023 - Found cast iron monument flush. Verified position by ACS RTK GPS method comparing to published coordinates.