

# CERTIFICATE OF LOCATION OF GOVERNMENT CORNER

County of Anoka

State of Minnesota

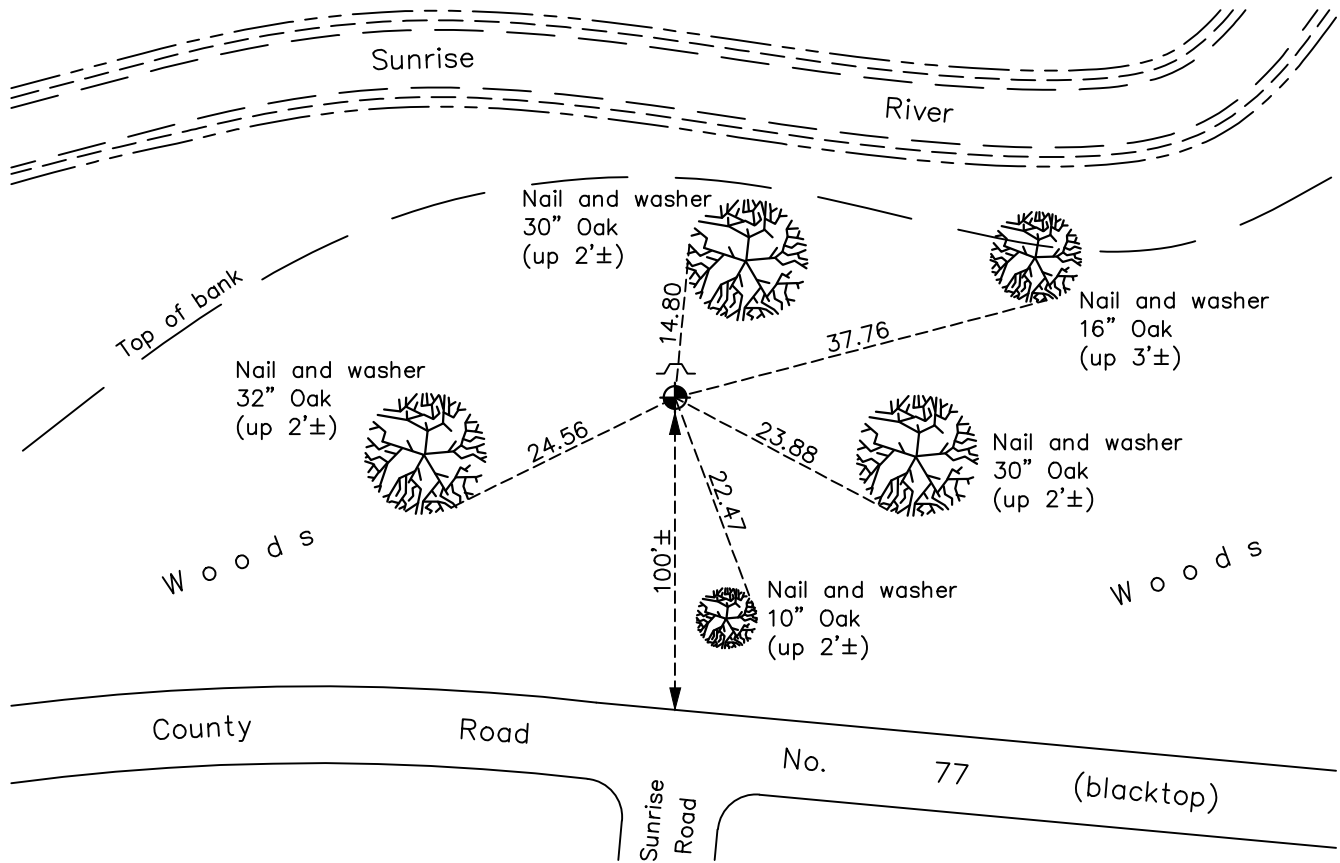
Witness Corner of Sec. 36 Township 34 Range 22  
(on west line of SW 1/4)

On the 30th day of September, 1975, the described corner was evidenced by area resurvey

and to perpetuate the location of said corner, at the exact location thereof, a permanent marker was placed consisting of a cast iron monument with a sign and post on the north side

AND on the 15th day of December, 2021, said permanent marker was found flush and the ties were updated

Updated reference ties are as shown below.



Revision Date  
 03/15/22

N.A.D. 1983 Coordinates  
(1996 Adjustment)

County Project Coordinates	
Northing	<u>229332.3392</u>
Easting	<u>558440.7638</u>
Date	<u>2/06/04</u>

I hereby certify that this United States public land survey monument record is correct and complete to the best of my knowledge and belief.

*David Zieglermeier* Date 3/25/24

David M. Zieglermeier, Anoka County Surveyor  
 Minnesota License Number 46179

# HISTORY OF GOVERNMENT CORNER

County of Anoka

State of Minnesota

Witness Corner of Sec. 36 Township 34 Range 22  
(on west line of SW 1/4)

## **CORNER HISTORY:**

September 30, 1975 - Set cast iron monument flush using area resurvey and established ties to monument.

August 14, 1978 - Found cast iron monument and updated ties.

June 9, 1982 - Found cast iron monument and updated ties.

August 13, 1986 - Found cast iron monument and updated ties.

June 14, 1993 - Found cast iron monument and updated ties.

February 6, 2004 - Established NAD 1983 (1996 adj.) Anoka Count project coordinates by static GPS methods.

February 4, 2014 - Found cast iron monument and updated ties.

December 28, 2018 - Found cast iron monument flush. Verified position by VRS GPS methods. Updated ties.

December 15, 2021 - Found cast iron monument flush. Verified position by VRS GPS methods. Updated ties.