

CERTIFICATE OF LOCATION OF GOVERNMENT CORNER

County of Anoka

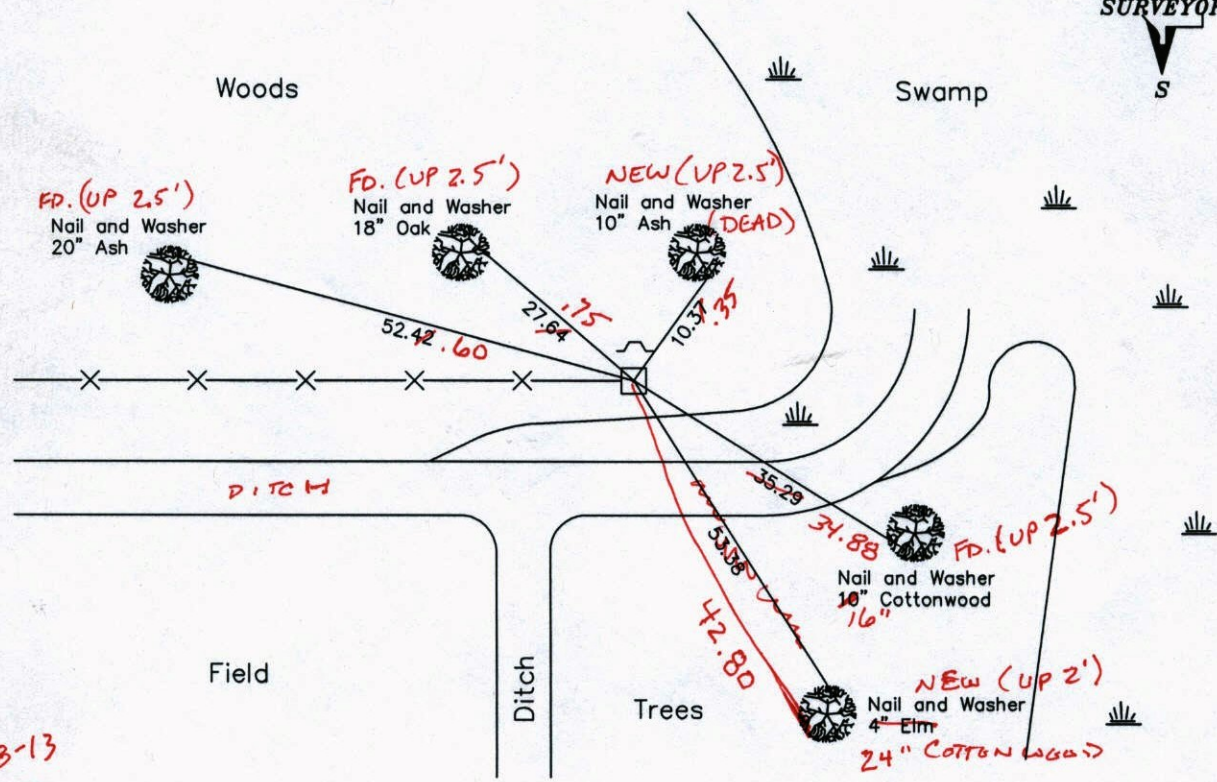
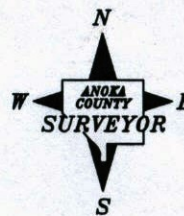
State of Minnesota

Southwest Corner of Sec. 25, Township 33, Range 25

I hereby certify that on the 12th day of July, 1960, I found the described corner which was evidenced by a granite monument

and I further certify that to perpetuate the location of said corner, I did, at the exact location thereof, place a permanent marker consisting of a granite monument with a sign and post one foot north of the corner ** MON. LEANING E'LY 0.2'± UP OUT OF GRND. 0.8'±*

which reference or witness monuments are located in the manner following:



*10-28-13
BK-55
TAPED*

Revised date Revised date

8-17-65	8-9-82
7-25-69	9-8-88
8-10-73	7-20-94
7-29-76	
7-25-79	

N.A.D. 1983 Co-ordinates
(1996 Adjustment)

County Project Co-ordinates		State Plane Co-ordinates	
Northing	<u>201461.6640</u>	Y	<u> </u>
Easting	<u>463411.2040</u>	X	<u> </u>

Date 2-25-03

CERTIFICATE OF LOCATION OF GOVERNMENT CORNER

County of Anoka

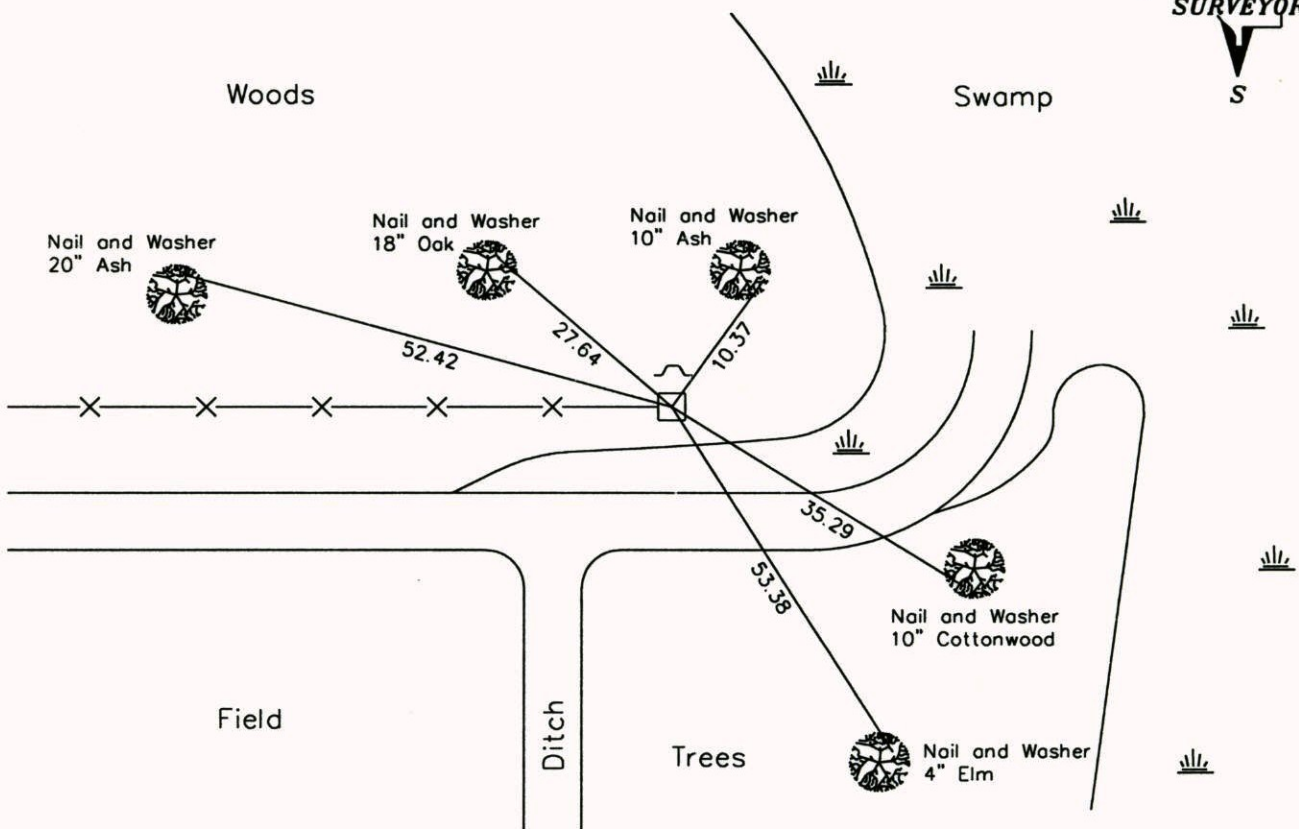
State of Minnesota

Southwest Corner of Sec. 25, Township 33, Range 25

I hereby certify that on the 12th day of July, 1960, I found the described corner which was evidenced by a granite monument

and I further certify that to perpetuate the location of said corner, I did, at the exact location thereof, place a permanent marker consisting of a granite monument with a sign and post one foot north of the corner

which reference or witness monuments are located in the manner following:



Revised date Revised date

8-17-65	8-9-82
7-25-69	9-8-88
8-10-73	7-20-94
7-29-76	
7-25-79	

N.A.D. 1983 Co-ordinates
(1996 Adjustment)

County Project Co-ordinates	State Plane Co-ordinates
Northing <u>201461.6640</u>	Y _____
Easting <u>463411.2040</u>	X _____

Date 2-25-03

CERTIFICATE OF LOCATION OF GOVERNMENT CORNER

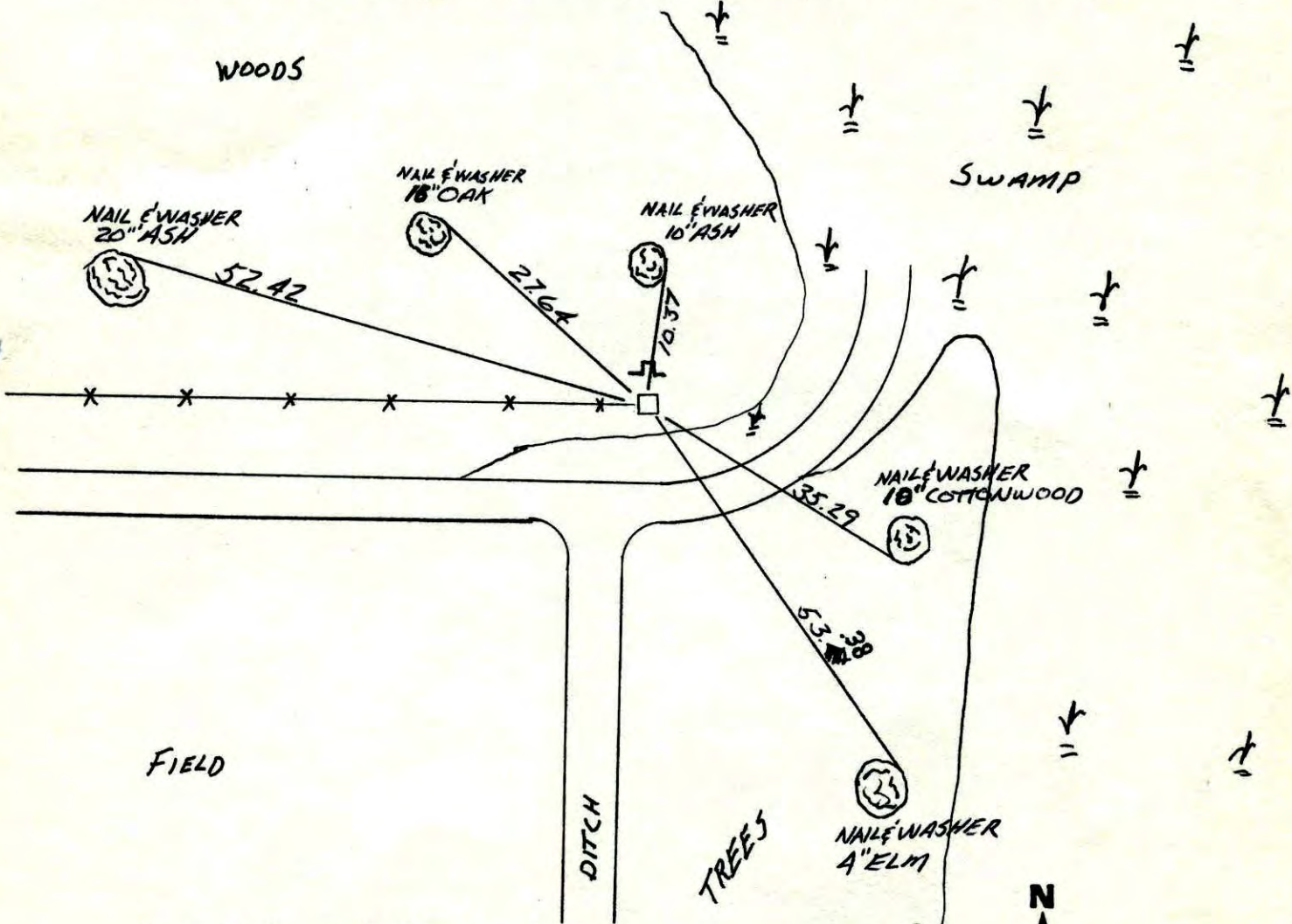
County of Anoka State of Minnesota

SOUTHWEST Corner of Sec. 25 Township 33 Range 25

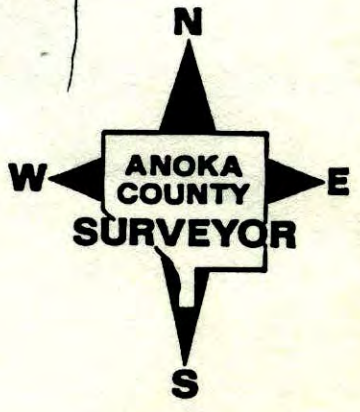
I hereby certify that on the 12TH day of July, 1960, I found the described corner which was evidenced by GRANITE MONUMENT

and I further certify that to perpetuate the location of said corner, I did, at the exact location thereof, place a permanent marker consisting of SADIE, SIGN & POST 15 1 FOOT NORTH OF CORNER

which reference or witness monuments are located in the manner following:

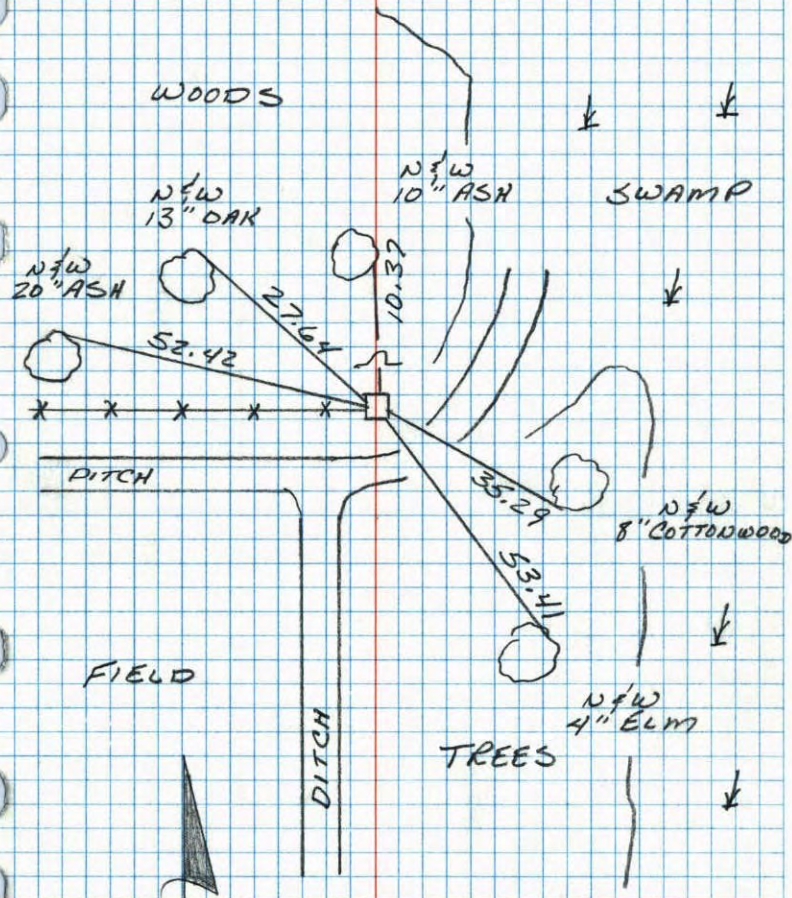


Revised date	Revised date	Revised date
8-17-65	7-20-94	
7-25-69		
8-10-93		
7-29-76		
7-25-79		
8-9-82		
9-8-88		



S.W. CORNER SEC 25 T33 R25

RETIED GRANITE MONUMENT WITH
SIGN AND POST ON THE NORTH SIDE.

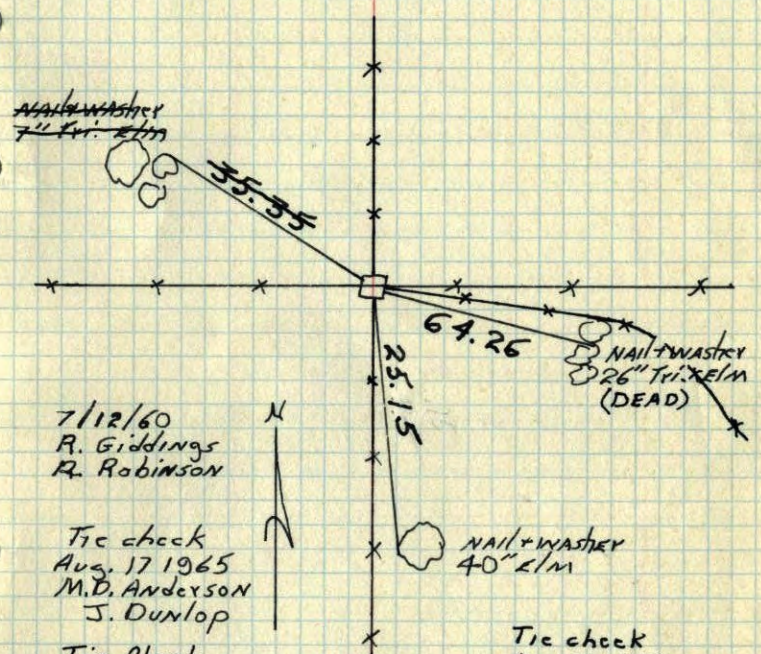


9-8-88
B. GUETZKO
J. STEVENSON
28° 200' TAPE

NO. 448
TELEPHONE

SW Cor. Sec. 25 T33 R25

Granite monument under E-W fence
and up 1'



7/12/60
R. Giddings
R. Robinson

Tie check
Aug. 17 1965
M.D. Anderson
J. Dunlop

Tie Check
July 25, 1969
D. Powell
R. Olson
B. Olson

TIE CHECK
8-9-82
P. Ross
R. Hornby

TIE CHECK
7-25-79
B. STEPHENS
D. STEPHENS
P. Ross

Tie check
Aug. 10, 1973
B. Olson
D. B.
D. F.

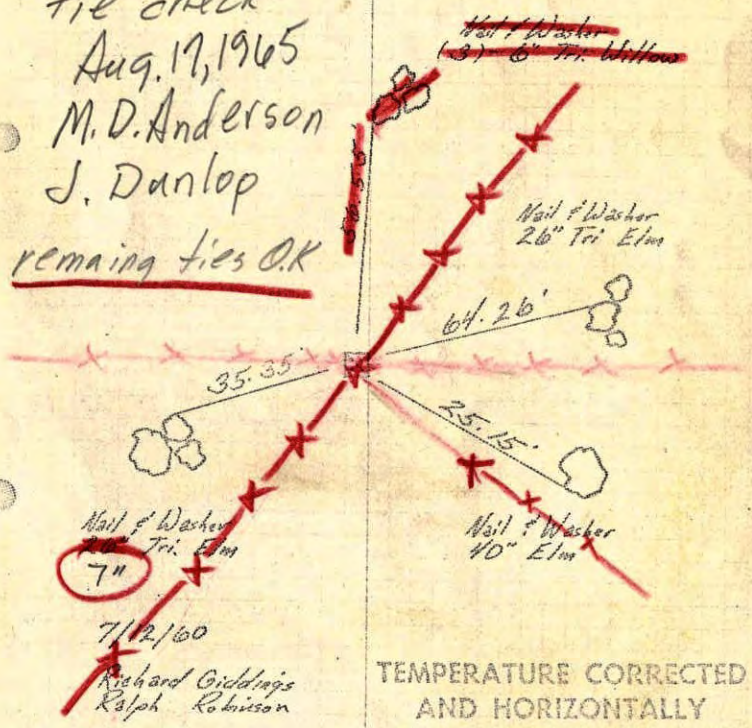
TIE CHECK
7-29-76
G. ADAMS
S. BRIEN
J. STEPHENS

TEMPERATURE CORRECTED
AND HORIZONTALLY
TAPED MEASUREMENTS

ROLAND W. ANDERSON
COUNTY SURVEYOR
ANOKA COUNTY, MINNESOTA

SW Cor Sec 25 - T33 - R25
Granite Mon. Up 1'
under E&W fence

temp. 75°
Tape #5
tie check
Aug. 17, 1965
M. D. Anderson
J. Danlop
remaining ties O.K

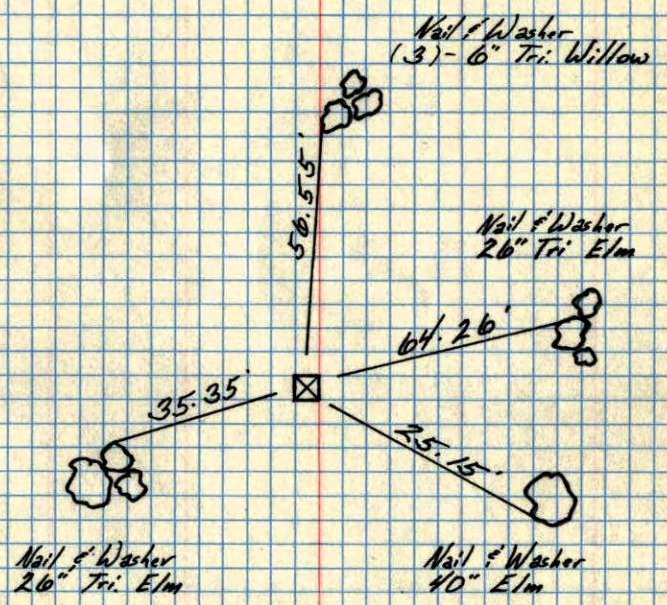


TEMPERATURE CORRECTED
AND HORIZONTALLY
TAPED MEASUREMENTS

7/12/60
Richard Giddings
Ralph Robinson

redrawn
ROLAND W. ANDERSON
COUNTY SURVEYOR
ANOKA COUNTY, MINNESOTA

SW Cor Sec 25 - T33 - R25
Granite Mon. Up 1'



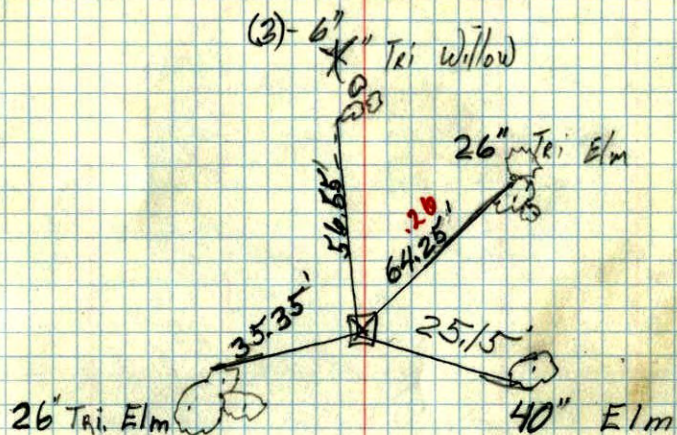
TEMPERATURE CORRECTED
AND HORIZONTALLY
TAPED MEASUREMENTS

7/12/60
Richard Giddings
Ralph Robinson

ROLAND W. ANDERSON
COUNTY SURVEYOR
ANOKA COUNTY, MINNESOTA

S.W. Corn. Sec. 25, T. 33 R. 25
(Burns)

Granite 1' above the ground



TC

Temp. 85°
July 12, 1960
Richard Giddings
Ralph Robinson

~~9/10/60~~