

CERTIFICATE OF LOCATION OF GOVERNMENT CORNER

County of Anoka

State of Minnesota

Witness Corner of Sec. 26, Township 33, Range 25

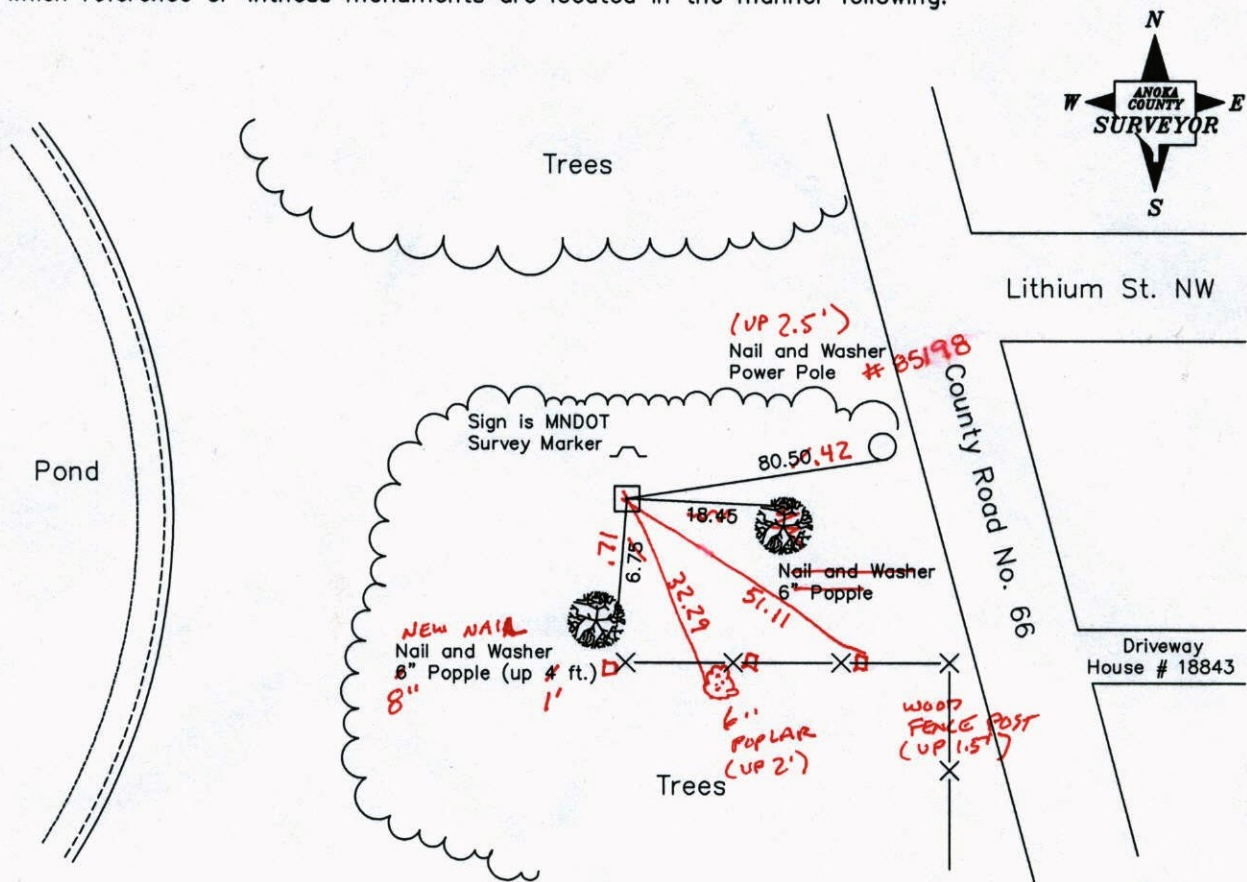
On the South Line of the Southeast Quarter of Sec. 26

I hereby certify that on the 14th day of May, 1975, I found the described corner which was

evidenced by a 3 inch by 3 inch concrete monument

and I further certify that to perpetuate the location of said corner, I did, at the exact location thereof, place a permanent marker consisting of (conc. up 0.3' ±)

which reference or witness monuments are located in the manner following:



Revised date Revised date

7-29-76	7-21-94
7-13-79	2-24-03
8-9-82	
7-12-85	
7-5-88	

N.A.D. 1983 Co-ordinates
(1996 Adjustment)

County Project Co-ordinates		State Plane Co-ordinates	
Northing	201473.6027	Y	_____
Easting	461169.1830	X	_____

Date 2-24-03

CERTIFICATE OF LOCATION OF GOVERNMENT CORNER

County of Anoka

State of Minnesota

Witness Corner of Sec. 26, Township 33, Range 25

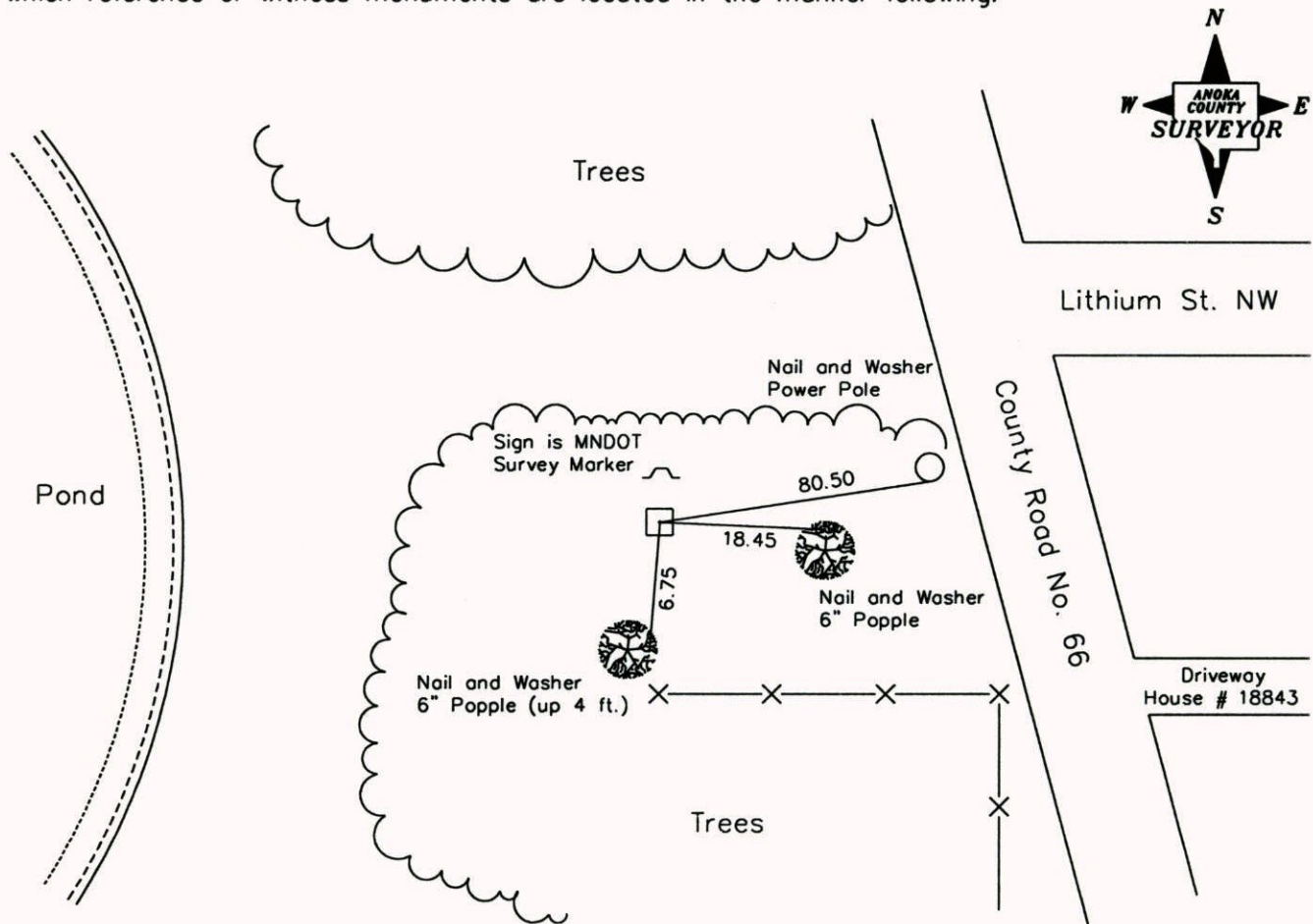
On the South Line of the Southeast Quarter of Sec. 26

I hereby certify that on the 14th day of May, 1975, I found the described corner which was

evidenced by a 3 inch by 3 inch concrete monument

and I further certify that to perpetuate the location of said corner, I did, at the exact location thereof, place a permanent marker consisting of _____

which reference or witness monuments are located in the manner following:



Revised date	Revised date
7-29-76	7-21-94
7-13-79	2-24-03
8-9-82	
7-12-85	
7-5-88	

N.A.D. 1983 Co-ordinates
(1996 Adjustment)

County Project Co-ordinates	State Plane Co-ordinates
Northing <u>201473.6027</u>	Y _____
Easting <u>461169.1830</u>	X _____

Date 2-24-03

CERTIFICATE OF LOCATION OF GOVERNMENT CORNER

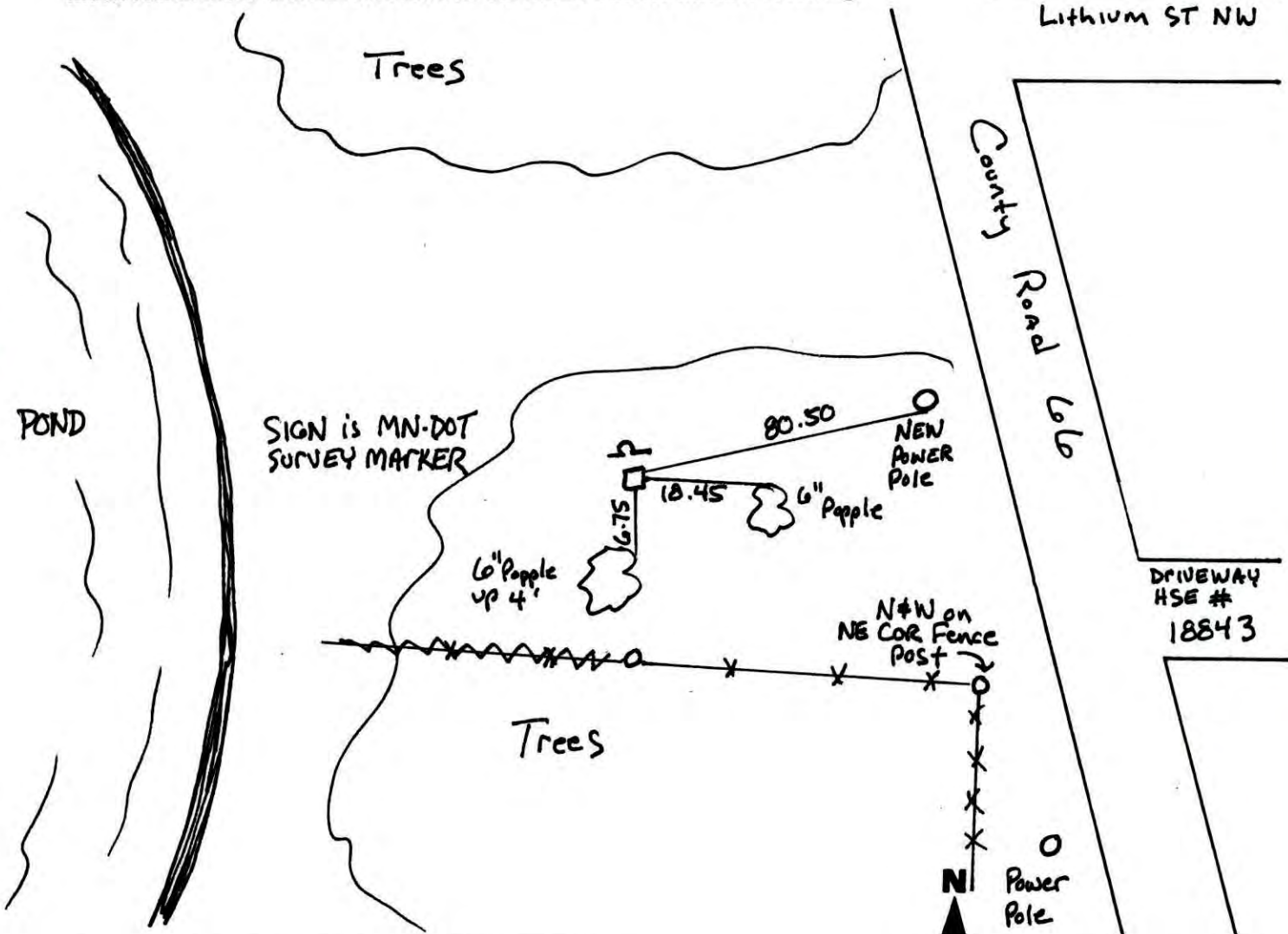
County of Anoka State of Minnesota

WITNESS ON SOUTH LINE
of SE 1/4 Corner of Sec. 26 Township 33 Range 2S

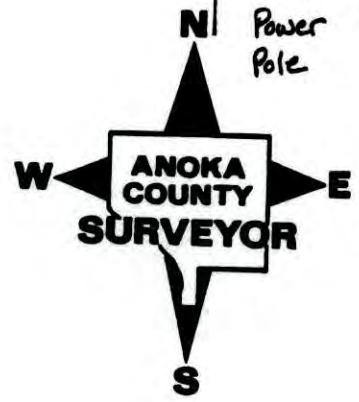
I hereby certify that on the 14 day of MAY, 1975, I found the described corner which was evidenced by 3" X 3" CONCRETE MONUMENT

and I further certify that to perpetuate the location of said corner, I did, at the exact location thereof, place a permanent marker consisting of _____

which reference or witness monuments are located in the manner following:

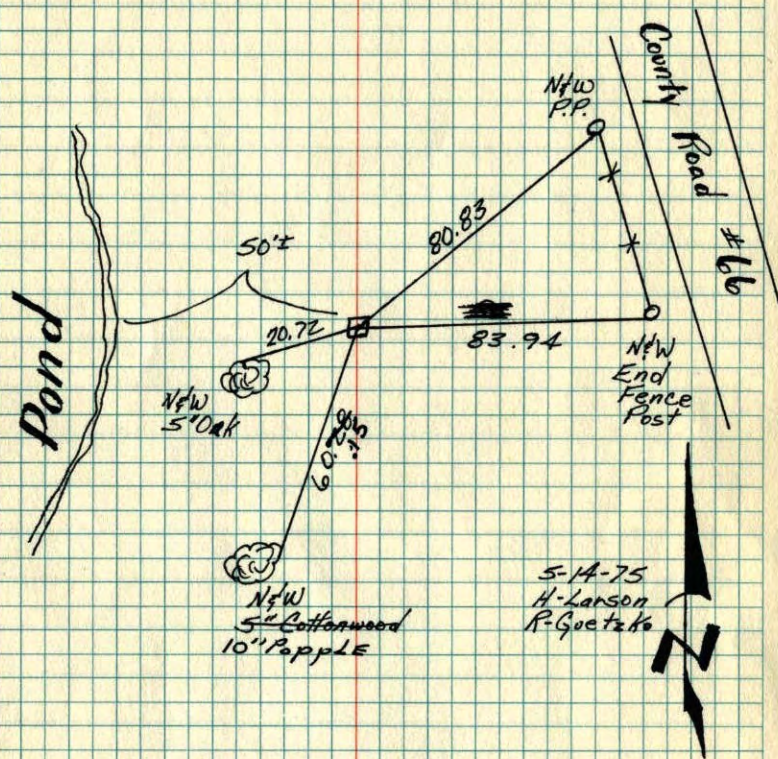


Revised date	Revised date	Revised date
7-29-76		
7-13-79		
8-9-82		
7-12-85		
7-5-88		
7-21-94		
2-24-03		



101
W.C. On South Line Of SE 1/4 OF
Sec 26-T33 R25

Found And Tied 3"x3" Concrete Monument.
Monument Flush. S 1/4 Cor Is In Pond



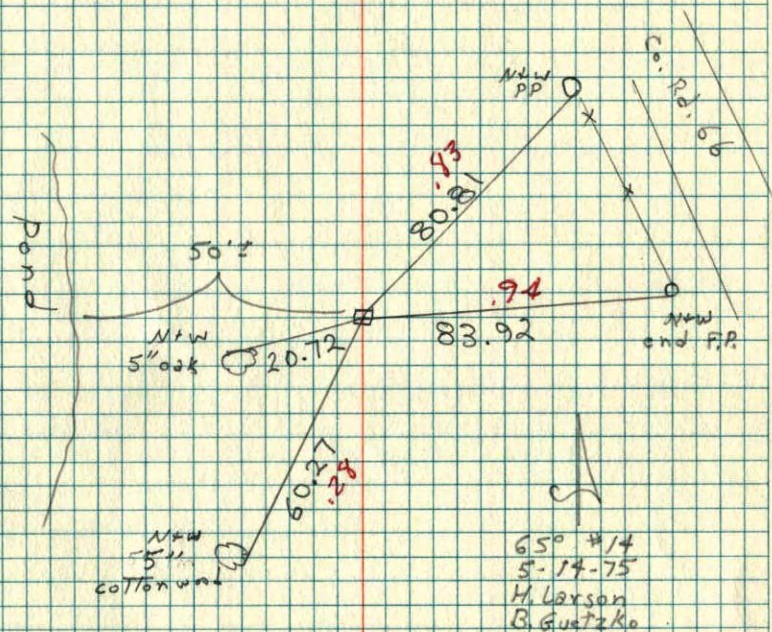
TIE CHECK	TIE CHECK	TIE CHECK
8-9-82	7-13-77	7-29-76
P. ROSS	B. STEPHENS	G. HOAMS
P. NORBY	D. STEPHENS	S. BRIEN
	P. ROSS	J. STEPHENS

TEMPERATURE CORRECTED
AND HORIZONTALLY
TAPED MEASUREMENTS

ROLAND W. ANDERSON
COUNTY SURVEYOR
ANOKA COUNTY, MINNESOTA

W.C. on South Line of SE 1/4 of
Sec. 26 T33 R25

Found and Tied 3"x3" concrete monument
mon. Flush
(S 1/4 Cor. is in pond)



65° #14
5-14-75
H. Larson
B. Guetzko