

CERTIFICATE OF LOCATION OF GOVERNMENT CORNER

County of Anoka

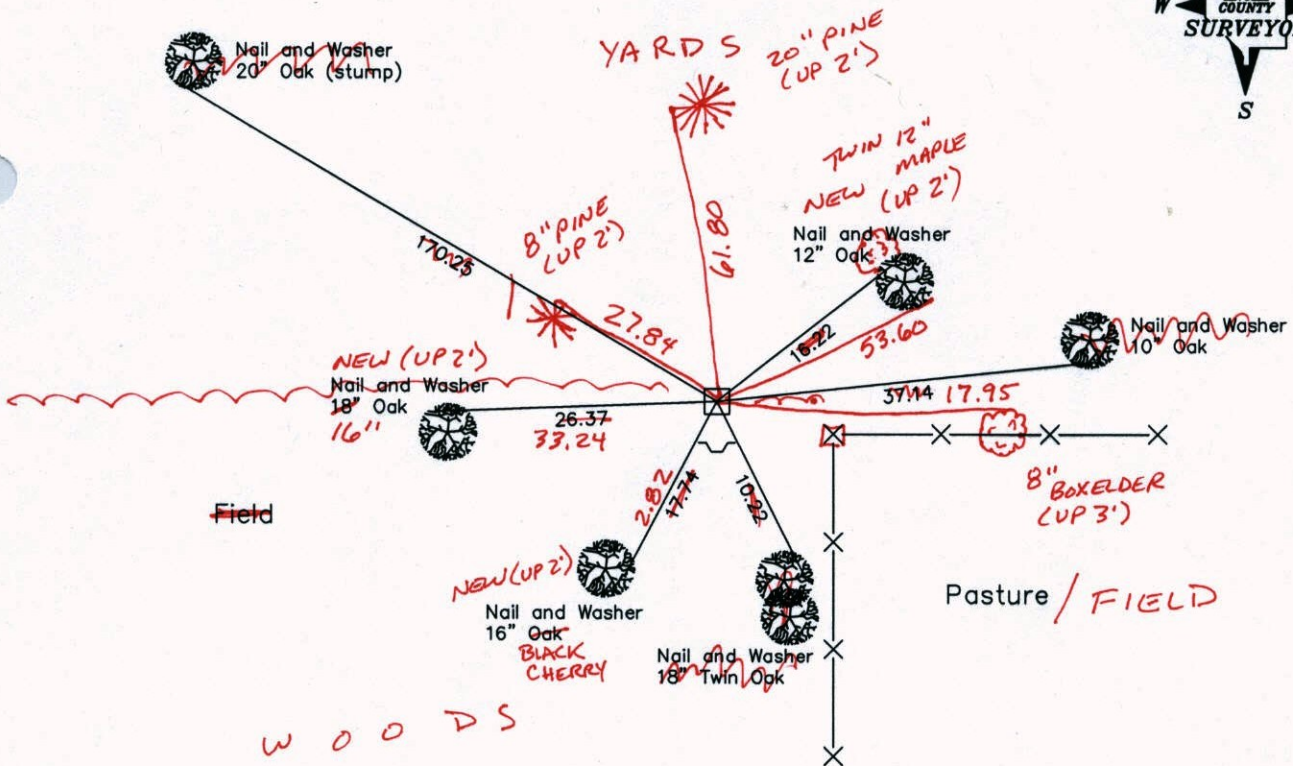
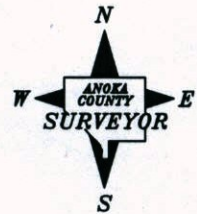
State of Minnesota

Northeast Corner of Sec. 34, Township 33, Range 25

I hereby certify that on the 17th day of June, 1963, I found the described corner which was evidenced by an 8 inch square granite monument

and I further certify that to perpetuate the location of said corner, I did, at the exact location thereof, place a permanent marker consisting of an 8 inch square granite monument with a sign and post on the south side

which reference or witness monuments are located in the manner following:



11-5-13
BK-SS
TAPED

Revised date

9-8-88
6-29-94

N.A.D. 1983 Co-ordinates
(1996 Adjustment)

County Project Co-ordinates		State Plane Co-ordinates	
Northing	201490.0054	Y	_____
Easting	458207.6863	X	_____

Date 2-24-03

CERTIFICATE OF LOCATION OF GOVERNMENT CORNER

County of Anoka

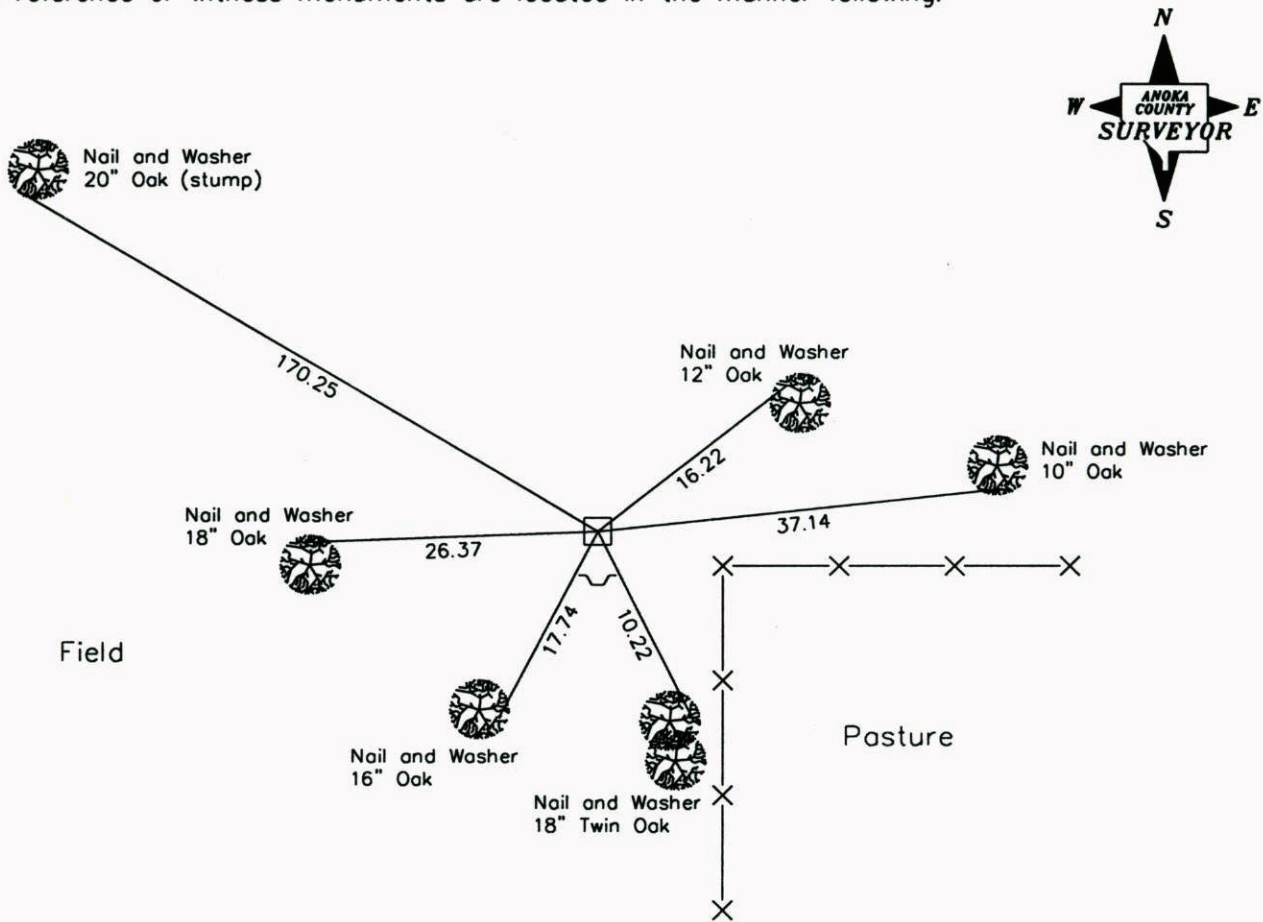
State of Minnesota

Northeast Corner of Sec. 34, Township 33, Range 25

I hereby certify that on the 17th day of June, 1963, I found the described corner which was evidenced by an 8 inch square granite monument

and I further certify that to perpetuate the location of said corner, I did, at the exact location thereof, place a permanent marker consisting of an 8 inch square granite monument with a sign and post on the south side

which reference or witness monuments are located in the manner following:



Revised date

9-8-88
6-29-94

N.A.D. 1983 Co-ordinates
(1996 Adjustment)

County Project Co-ordinates	
Northing	201490.0054
Easting	458207.6863

State Plane Co-ordinates	
Y	_____
X	_____

Date 2-24-03

CERTIFICATE OF LOCATION OF GOVERNMENT CORNER

County of Anoka

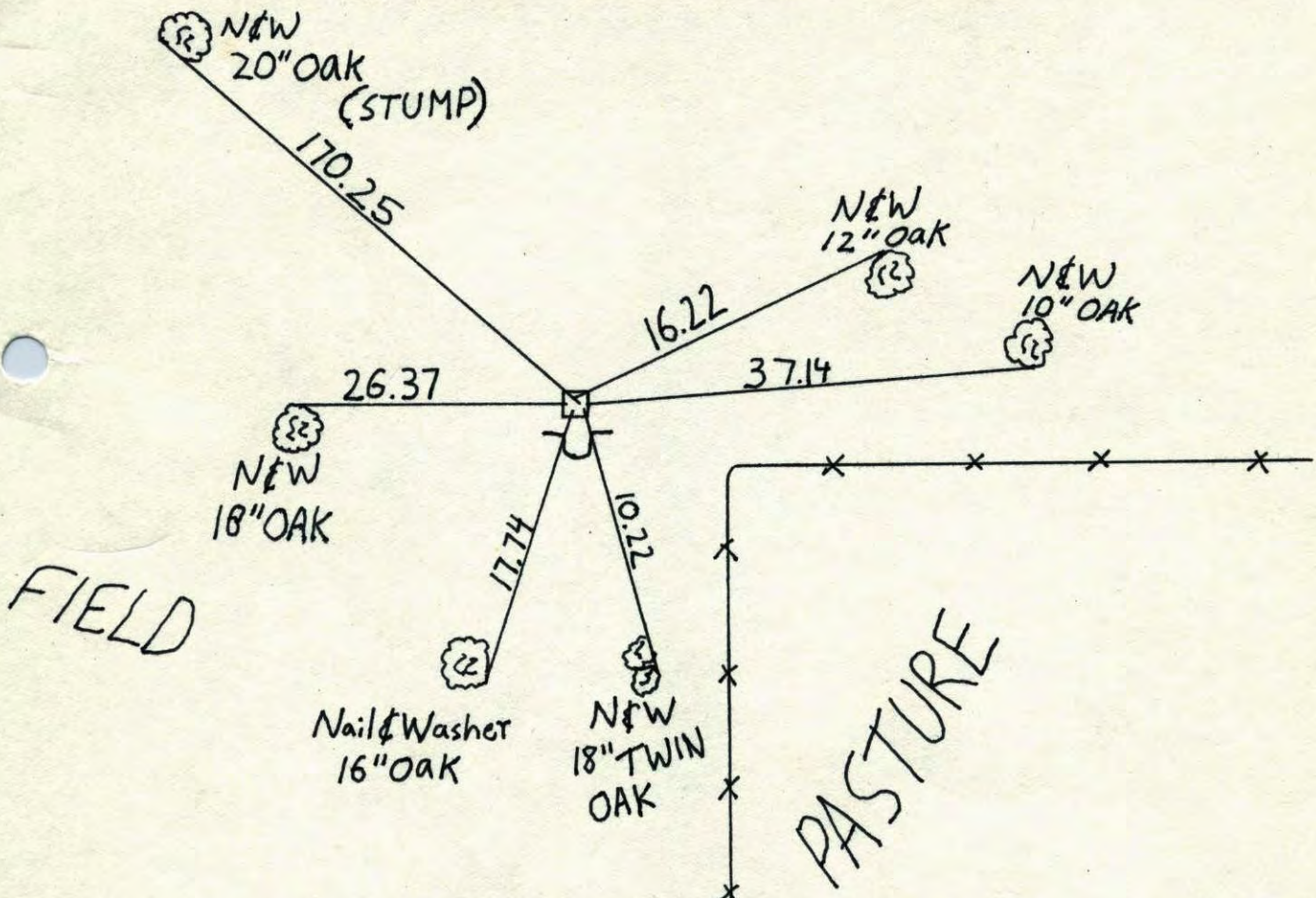
State of Minnesota

NORTHEAST Corner of Sec. 34 Township 33 Range 25

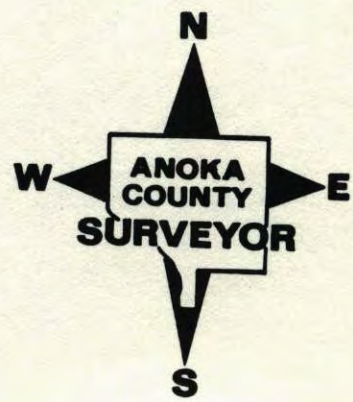
I hereby certify that on the 17 day of JUNE, 19 63, I found the described corner which was evidenced by 8" SQUARE GRANITE MON.

and I further certify that to perpetuate the location of said corner, I did, at the exact location thereof, place a permanent marker consisting of SAME
SIGN & POST SOUTH SIDE

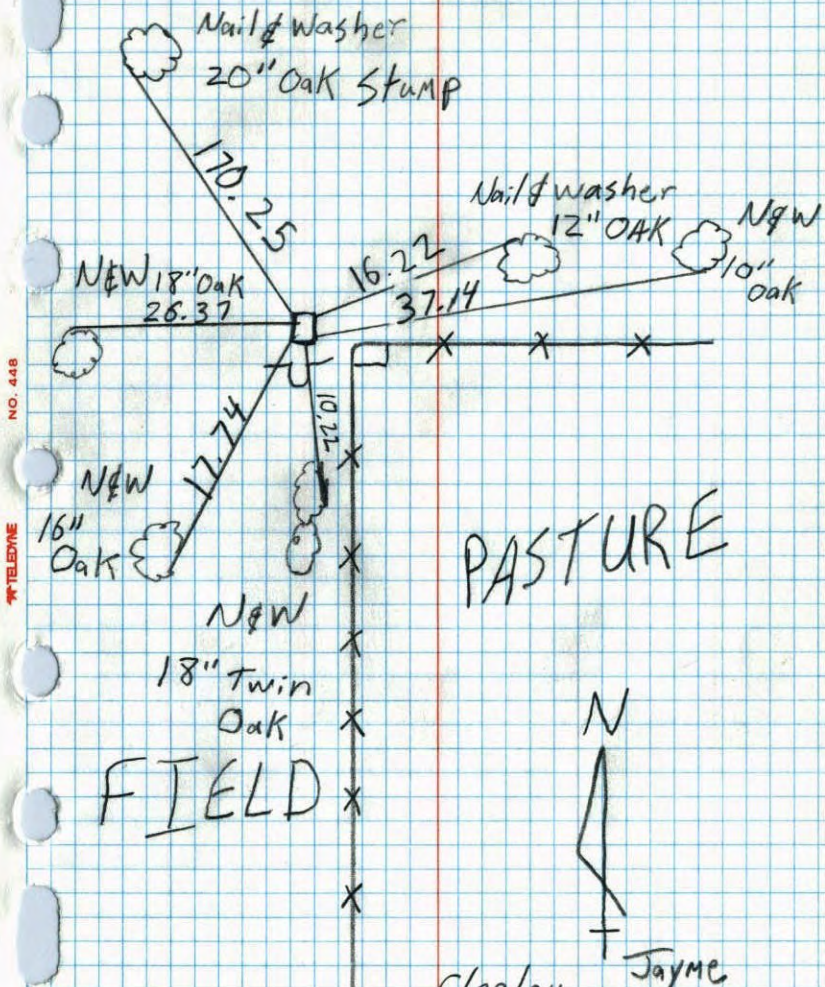
which reference or witness monuments are located in the manner following:



Revised date	Revised date	Revised date
9-8-88		
6-29-94		



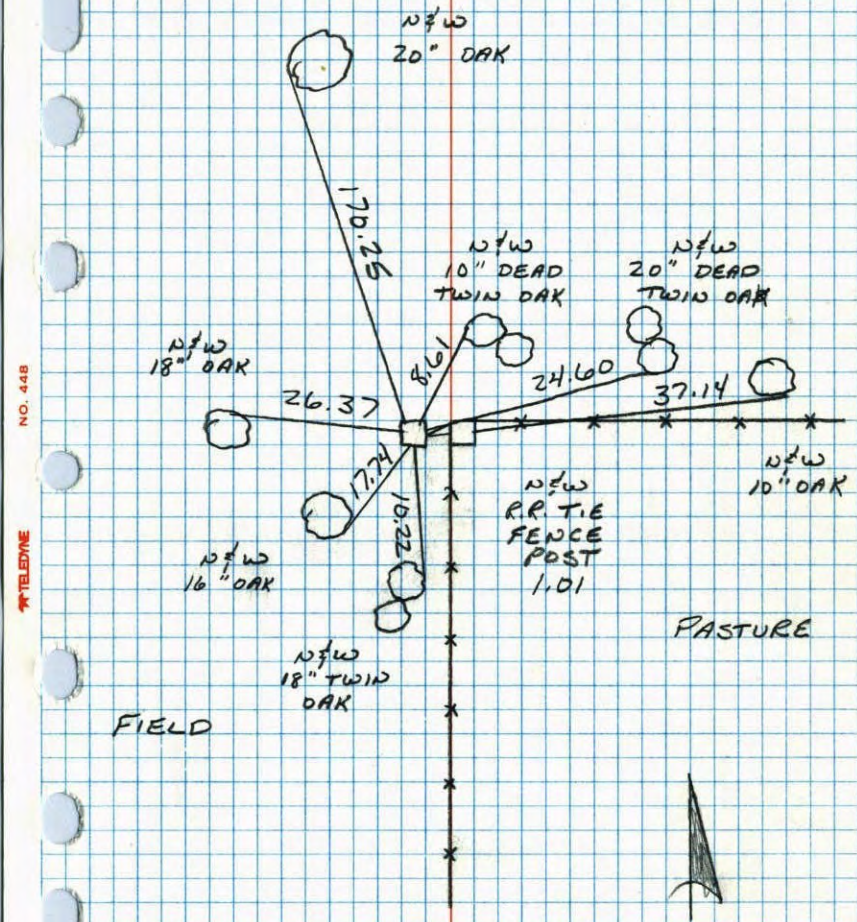
NE CORNER Sec. 34 T.33 R.25
 Retic 8" Granite Monument



6/29/94

Jayme
 Anderson
 Josh
 Anderson

N.E. CORNER SEC 34 T33 R25
 RETIED 8" SQUARE GRANITE MONUMENT



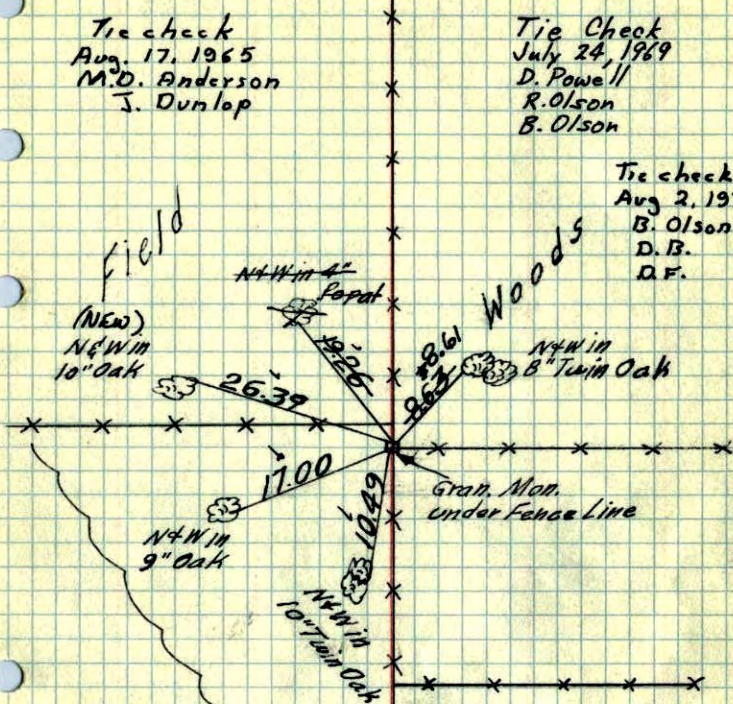
9-8-88
 B. GUETZKO
 J. STEVENSON
 78° 200' TAPE

N.E. Cor. Sec. 34, T.33, R.25
 Found 8" Sq. Granite Monument
 up 0.2'±

Tie check
 Aug. 17, 1965
 M.D. Anderson
 J. Dunlop

Tie Check
 July 24, 1969
 D. Powell
 R. Olson
 B. Olson

Tie check
 Aug 2, 1973
 B. Olson
 D.B.
 D.F.



TEMPERATURE CORRECTED
 AND HORIZONTALLY
 TAPED MEASUREMENTS

TIE CHECK
 7-29-76
 G. ADAMS
 S. BRIEN
 J. STEPHENS

TIE CHECK
 8-3-82
 P. ROSS
 P. HORNBY

ROLAND W. ANDERSON
 COUNTY SURVEYOR
 ANOKA COUNTY, MINNESOTA

TIE CHECK
 7-24-79
 B. STEPHENS
 D. STEPHENS
 P. ROSS

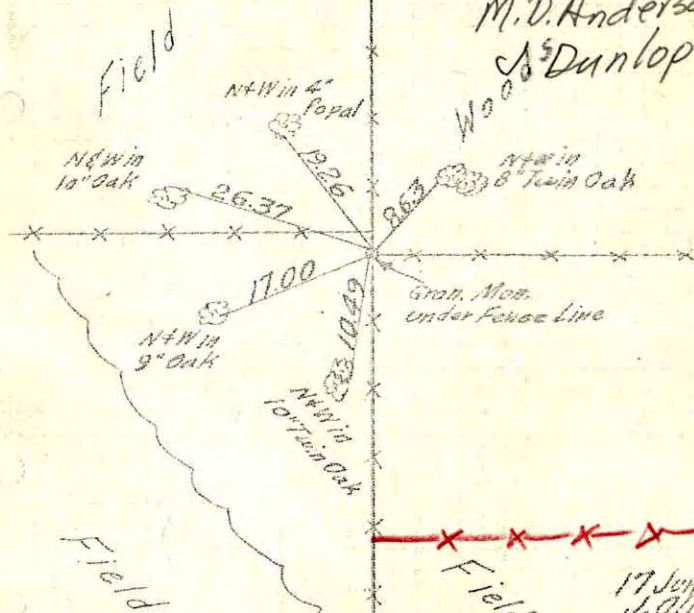
17 June 63
 J. Oliver
 M.D. Anderson
 R. Carlson

N.E. Cor. Sec. 34, T.33, R.25
 Found 8" Sq. Granite Monument

Mon. up 0.2'±

All ties OK
 tie-check

Aug. 17, 1965
 M.D. Anderson
 J. Dunlop



TEMPERATURE CORRECTED
 AND HORIZONTALLY
 TAPED MEASUREMENTS

Entered
 H.L.

ROLAND W. ANDERSON
 COUNTY SURVEYOR
 ANOKA COUNTY, MINNESOTA

17 June 63
 J. Oliver
 M.D. Anderson
 R. Carlson

NE Cor. Sec. 34, T33, R25

Found 8" Sq. Granite Monument

