

CERTIFICATE OF LOCATION OF GOVERNMENT CORNER

County of Anoka

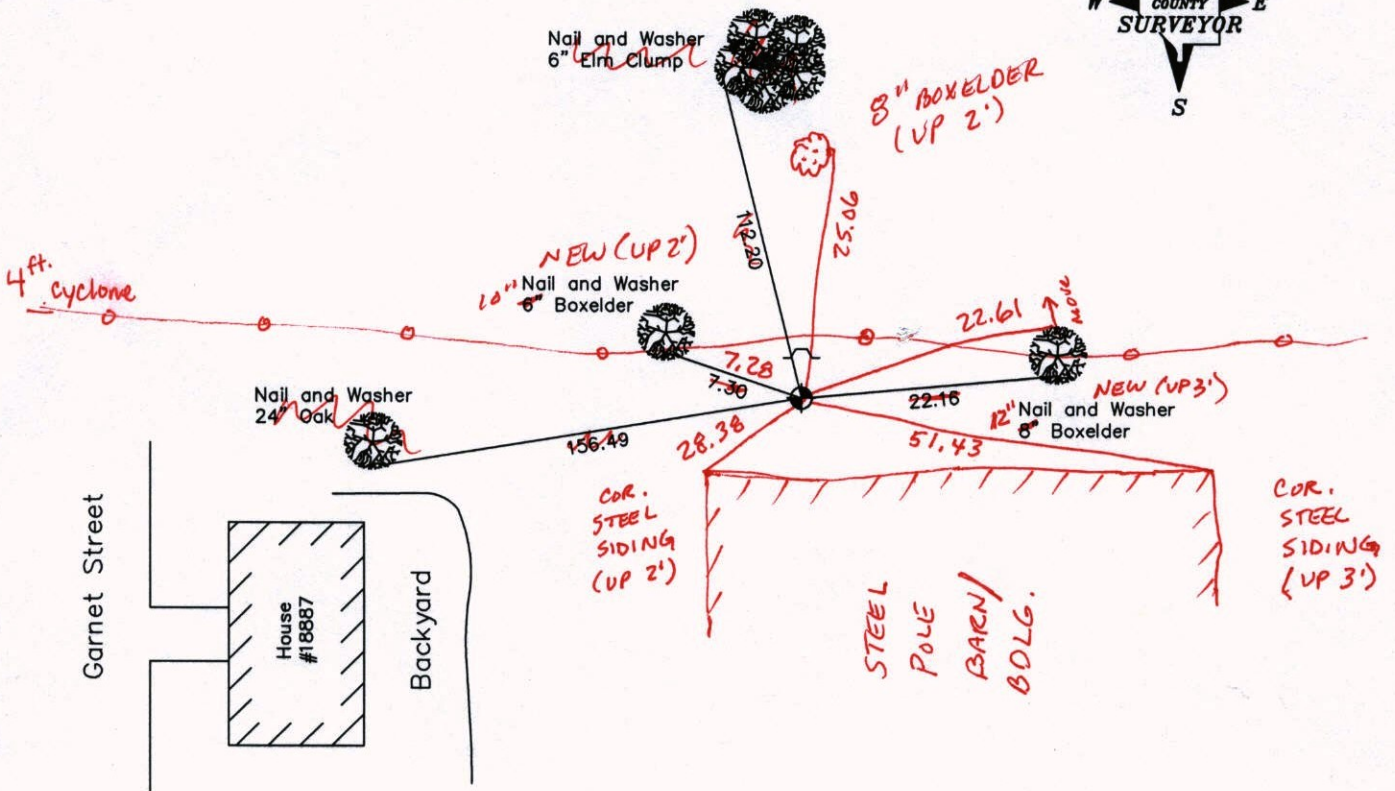
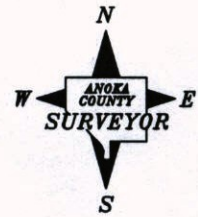
State of Minnesota

South 1/4 Corner of Sec. 27, Township 33, Range 25

I hereby certify that on the 15th day of June, 1966, I found the described corner which was evidenced by Area Resurvey

and I further certify that to perpetuate the location of said corner, I did, at the exact location thereof, place a permanent marker consisting of a cast iron monument with a sign and post on the north side (max. up 0.10' ±)

which reference or witness monuments are located in the manner following:



11-5-13
BK-55
TAPED

Revised date

7-3-85
6-6-88
6-29-94

N.A.D. 1983 Co-ordinates
(1996 Adjustment)

County Project Co-ordinates	
Northing	201519.9442
Easting	455582.5744

State Plane Co-ordinates	
Y	_____
X	_____

Date 2-20-03

CERTIFICATE OF LOCATION OF GOVERNMENT CORNER

County of Anoka

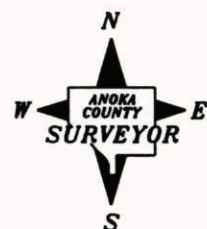
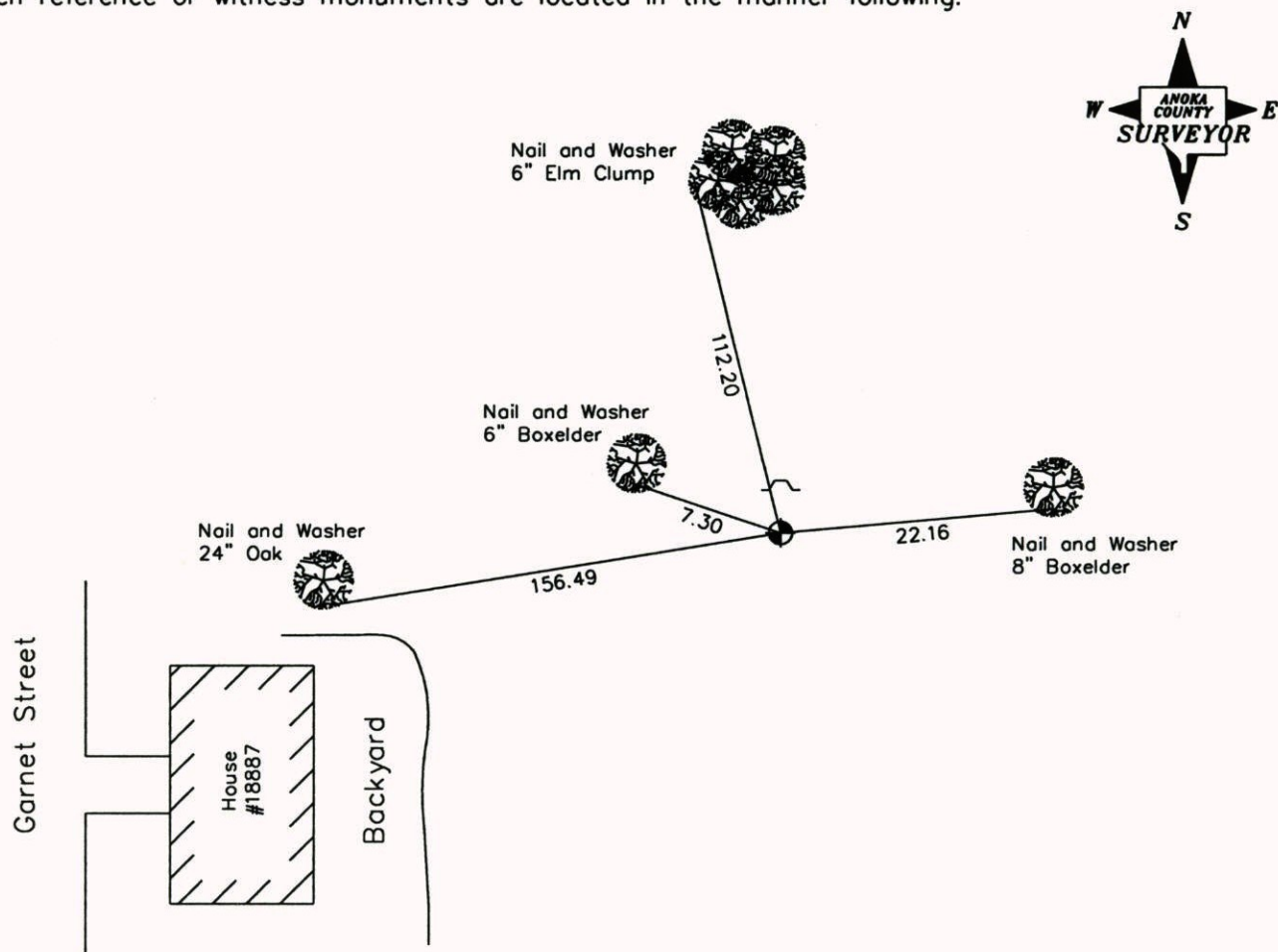
State of Minnesota

South 1/4 Corner of Sec. 27, Township 33, Range 25

I hereby certify that on the 15th day of June, 1966, I found the described corner which was evidenced by Area Resurvey

and I further certify that to perpetuate the location of said corner, I did, at the exact location thereof, place a permanent marker consisting of a cast iron monument with a sign and post on the north side

which reference or witness monuments are located in the manner following:



Revised date

7-3-85
6-6-88
6-29-94

N.A.D. 1983 Co-ordinates
(1996 Adjustment)

County Project Co-ordinates	State Plane Co-ordinates
Northing <u>201519.9442</u>	Y <u> </u>
Easting <u>455582.5744</u>	X <u> </u>

Date 2-20-03

CERTIFICATE OF LOCATION OF GOVERNMENT CORNER

County of Anoka

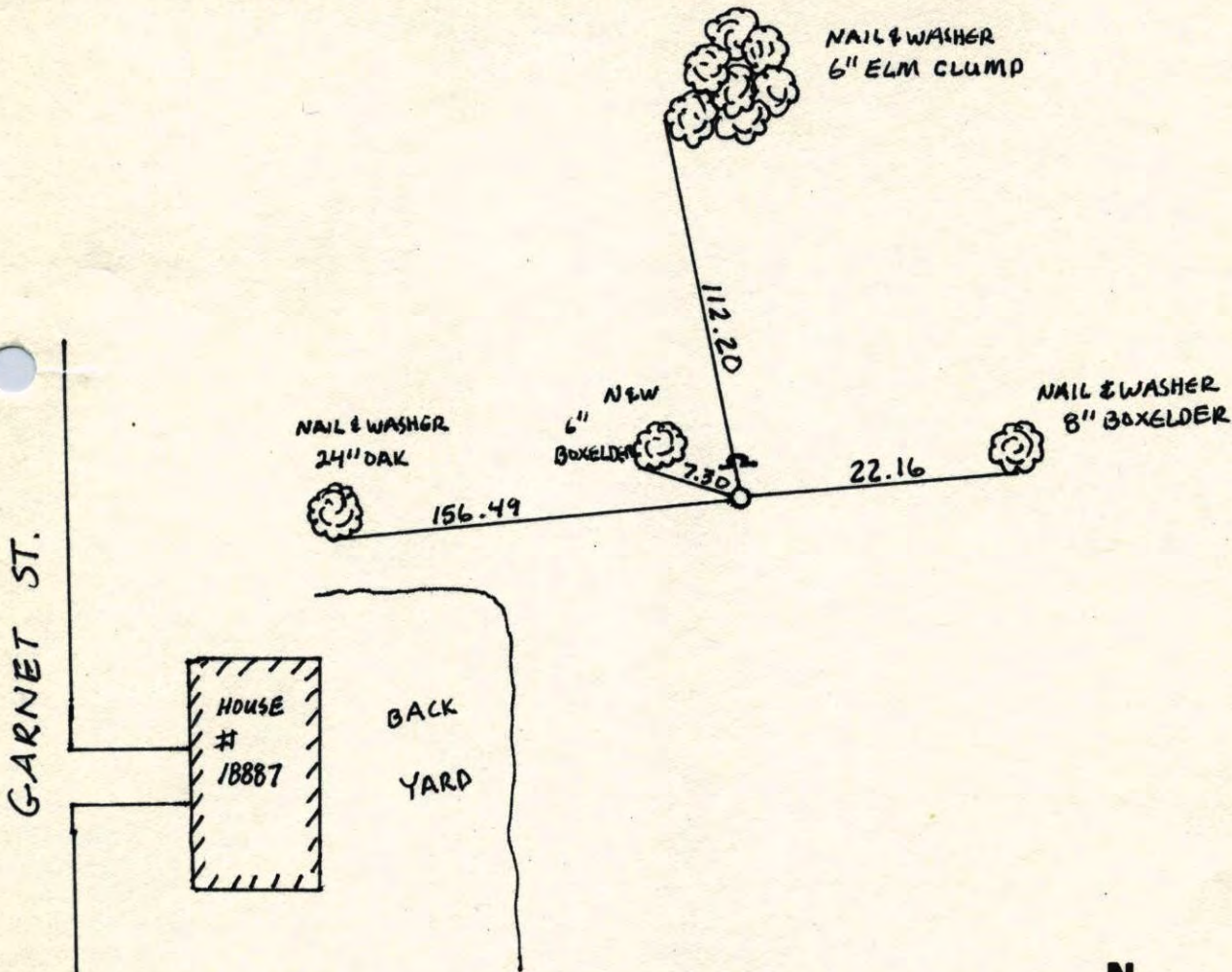
State of Minnesota

SOUTH 1/4 Corner of Sec. 27 Township 33 Range 25

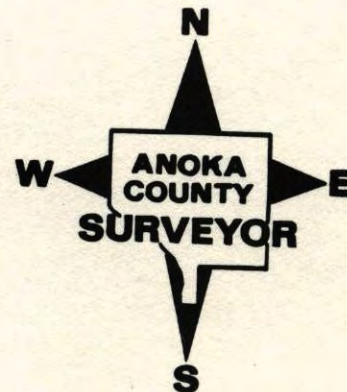
I hereby certify that on the 15 day of JUNE, 1966, I found the described corner which was evidenced by AREA RESURVEY

and I further certify that to perpetuate the location of said corner, I did, at the exact location thereof, place a permanent marker consisting of CAST IRON MONUMENT; SIGN AND POST ON THE NORTH SIDE

which reference or witness monuments are located in the manner following:



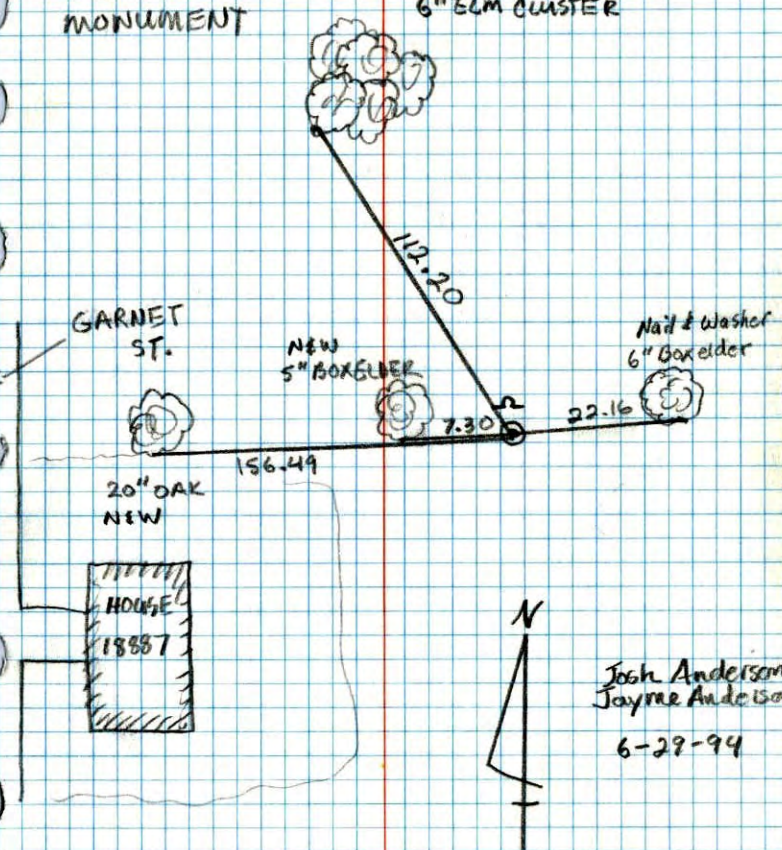
Revised date	Revised date	Revised date
7-3-85		
6-6-88		
6-29-94		



South 1/4 Sec. 27 T. 33 R. 25

Retie
CAST IRON
MONUMENT

Nail & WASHER
6" ELM CLUSTER

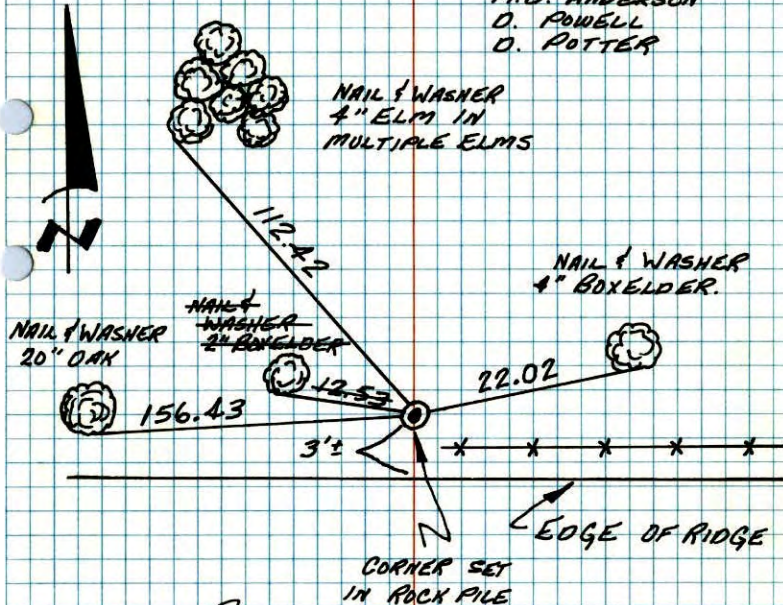


Josh Anderson
Jayne Anderson
6-28-94

S 1/4 COR. SEC. 27-T33-R25

SET CAST IRON MONUMENT FLUSH IN ROCK PILE

FROM AREA RESURVEY. 15 JUN 66
M. O. ANDERSON
D. POWELL
D. POTTER



TIE CHECK
7-29-76
G. ADAMS
S. BRIEN
J. STEPHENS

TIE CHECK
7-24-79
B. STEPHENS
D. STEPHENS
P. ROSS

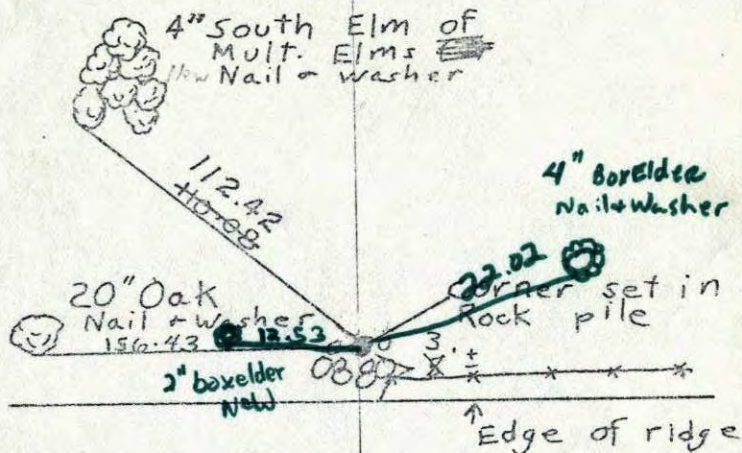
TIE CHECK
8-6-82
P. ROSS
P. HORNBY

TEMPERATURE CORRECTED
AND HORIZONTALLY
TAPED MEASUREMENTS

ROLAND W. ANDERSON
COUNTY SURVEYOR
ANOKA COUNTY, MINNESOTA

S 1/4 Cor. Sec 27-T33-R25

- Set Cast Iron Mon. from resurvey
- Set flush in rock pile

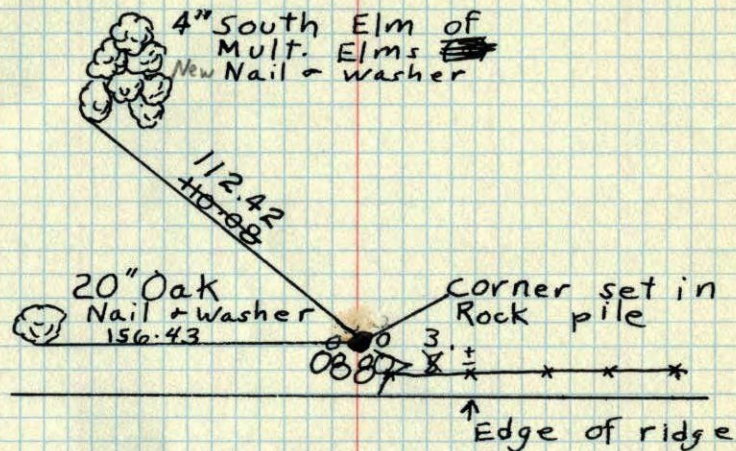


June 15, 1966

M. D. Anderson
D. Powell
D. Pottertemp 63
Tape #5Tie check
July 31 1973
B. Olson
D. B.
D. F.Tie Check
7-29-76
G. Adams
S. Brien
J. Stephens
7-82Tie Check
July 22, 1969
D. Powell
R. Olson
B. OlsonTEMPERATURE CORRECTED
AND HORIZONTALLY
TAPED MEASUREMENTSROLAND W. ANDERSON
COUNTY SURVEYOR
ANOKA COUNTY, MINNESOTA

S 1/4 Cor. Sec 27-T33-R25

- Set Cast Iron Mon. from resurvey
- Set flush in rock pile



June 15, 1966

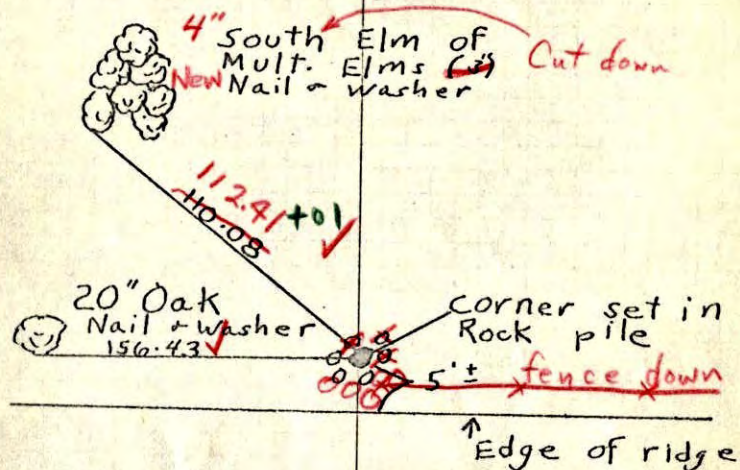
M. D. Anderson
D. Powell
D. Pottertemp 63
Tape #5Tie check
July 31 1973
B. Olson
D. B.
D. F.Tie Check
July 22, 1969
D. Powell
R. Olson
B. OlsonSEE
NEW
TIESTEMPERATURE CORRECTED
AND HORIZONTALLY
TAPED MEASUREMENTSROLAND W. ANDERSON
COUNTY SURVEYOR
ANOKA COUNTY, MINNESOTA

57

S 1/4 Cor. Sec 27-T33-R25

Set Cast Iron Mon. from resurvey

Set flush in rock pile



Plowed field

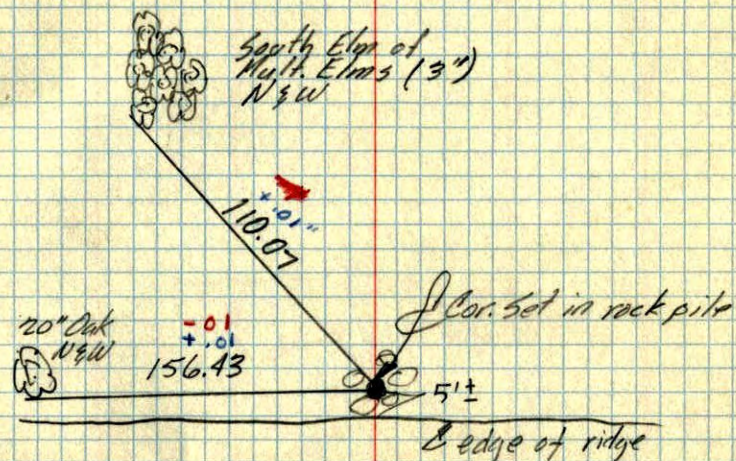
June 15, 1966

M.D. Anderson
D. Powell
D. Pottertemp 63
Tape #5
✓ 45-740 ✓
7/22/69
D. Powell
R. Olson
B. OlsonTEMPERATURE CORRECTED
AND HORIZONTALLY
TAPED MEASUREMENTSROLAND W. ANDERSON
COUNTY SURVEYOR
ANOKA COUNTY, MINNESOTA

S 1/4 Cor. Sec 27-T33-R25

Set C.I. Mon. from resurvey

Set flush in rock pile



Plowed field

June 15, 1966

M.D. Anderson
D. Powell
D. Pottertemp 63
Tape #5TEMPERATURE CORRECTED
AND HORIZONTALLY
TAPED MEASUREMENTSROLAND W. ANDERSON
COUNTY SURVEYOR
ANOKA COUNTY, MINNESOTA