

# CERTIFICATE OF LOCATION OF GOVERNMENT CORNER

County of Anoka

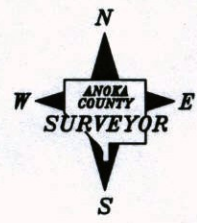
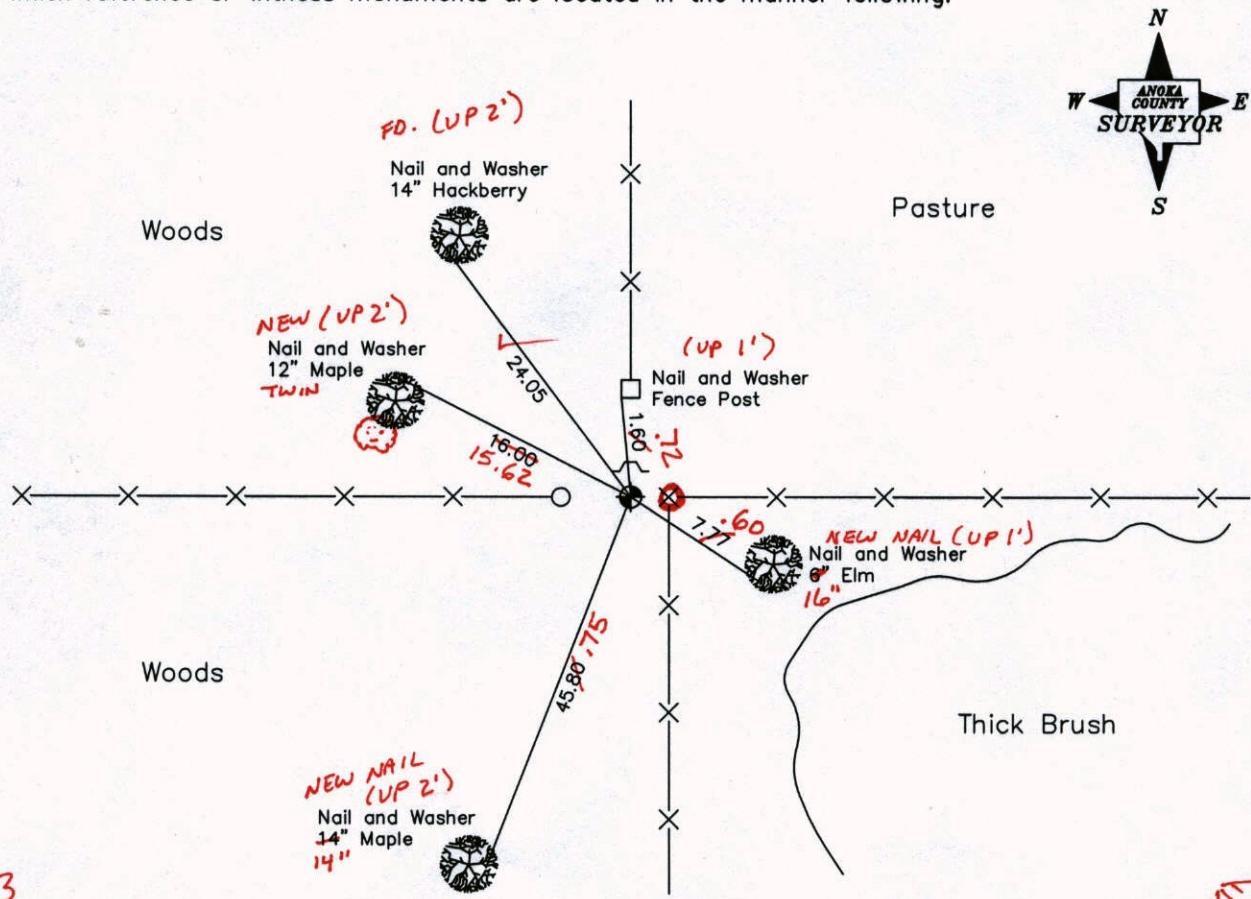
State of Minnesota

## Southwest Corner of Sec. 28, Township 33, Range 25

I hereby certify that on the 20th day of July, 1971, I found the described corner which was evidenced by Area Resurvey

and I further certify that to perpetuate the location of said corner, I did, at the exact location thereof, place a permanent marker consisting of a cast iron monument with a sign and post on the north side

which reference or witness monuments are located in the manner following:



11-4-13  
BK-SS  
TAPED

HSE #  
18868  
BISON ST.

Revised date	Revised date
7-29-76	7-12-94
7-23-79	2-26-03
8-10-82	
7-12-85	
6-16-89	

N.A.D. 1983 Co-ordinates  
(1996 Adjustment)

County Project Co-ordinates		State Plane Co-ordinates	
Northing	201573.5989	Y	_____
Easting	447698.4454	X	_____

Date 2-26-03

# CERTIFICATE OF LOCATION OF GOVERNMENT CORNER

County of Anoka

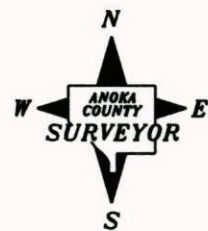
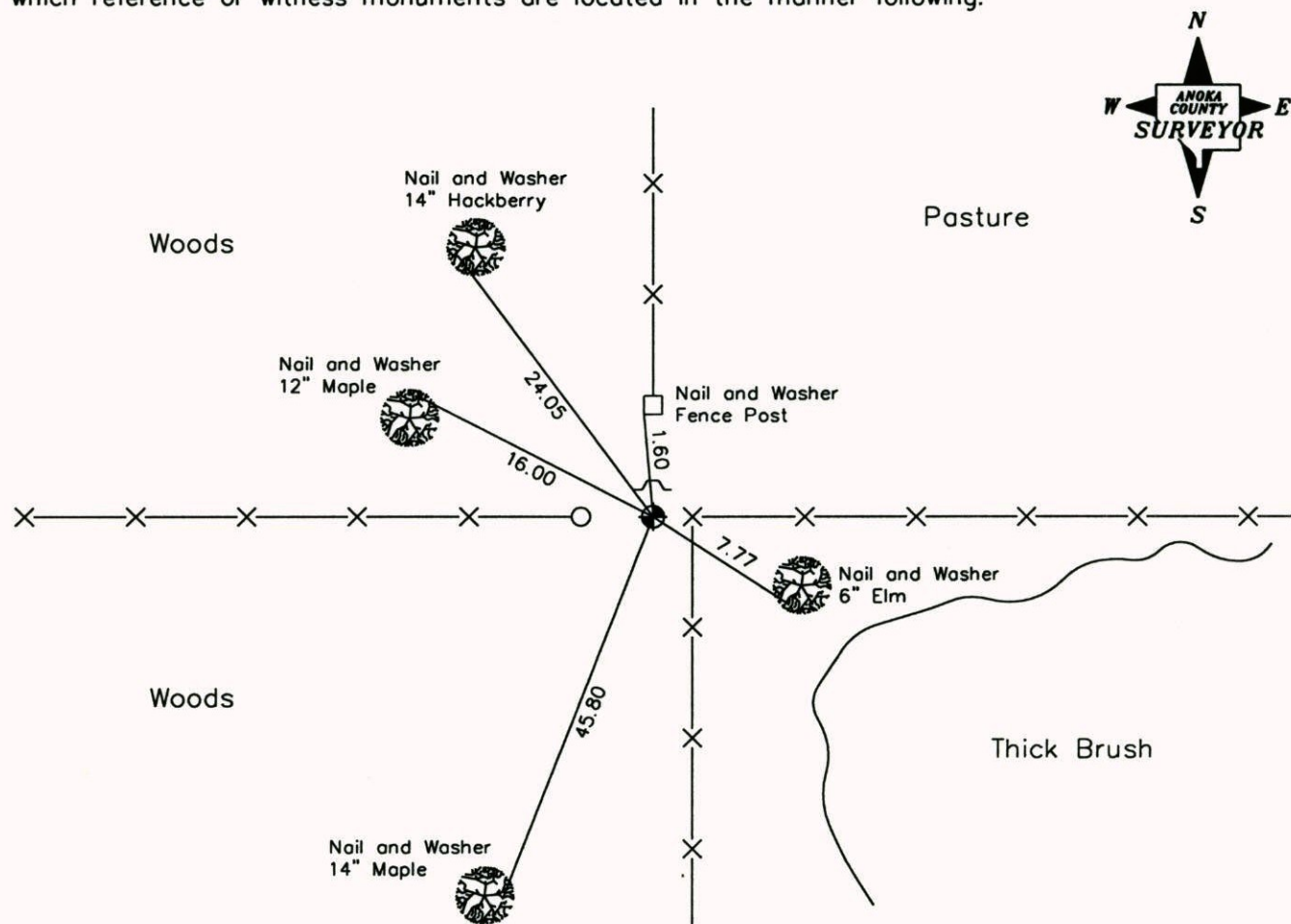
State of Minnesota

## Southwest Corner of Sec. 28, Township 33, Range 25

I hereby certify that on the 20th day of July, 1971, I found the described corner which was evidenced by Area Resurvey

and I further certify that to perpetuate the location of said corner, I did, at the exact location thereof, place a permanent marker consisting of a cast iron monument with a sign and post on the north side

which reference or witness monuments are located in the manner following:



Revised date      Revised date

7-29-76	7-12-94
7-23-79	2-26-03
8-10-82	
7-12-85	
6-16-89	

N.A.D. 1983 Co-ordinates  
(1996 Adjustment)

County Project Co-ordinates	
Northing	201573.5989
Easting	447698.4454

State Plane Co-ordinates	
Y	_____
X	_____

Date 2-26-03

# CERTIFICATE OF LOCATION OF GOVERNMENT CORNER

County of Anoka

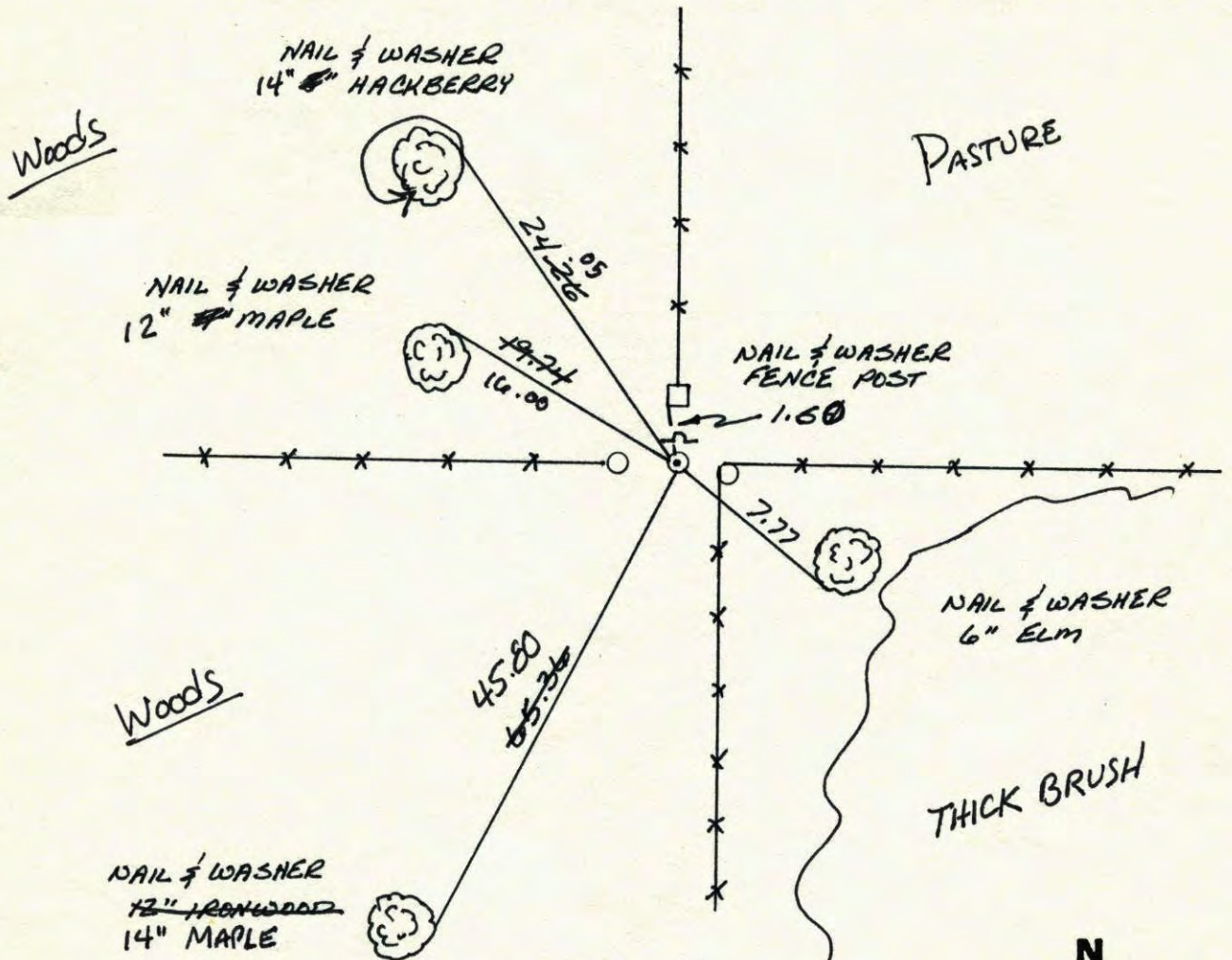
State of Minnesota

SOUTHWEST Corner of Sec. 28 Township 33 Range 25

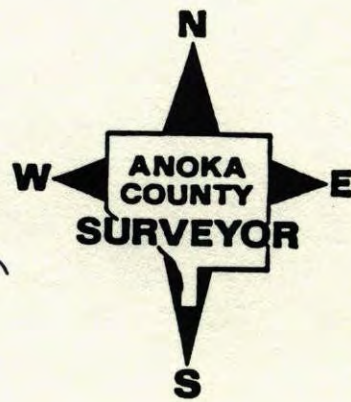
I hereby certify that on the 20 day of JULY, 1971, I found the described corner which was evidenced by AREA RESURVEY

and I further certify that to perpetuate the location of said corner, I did, at the exact location thereof, place a permanent marker consisting of CAST IRON MONUMENT WITH SIGN AND POST ON THE NORTH SIDE

which reference or witness monuments are located in the manner following:

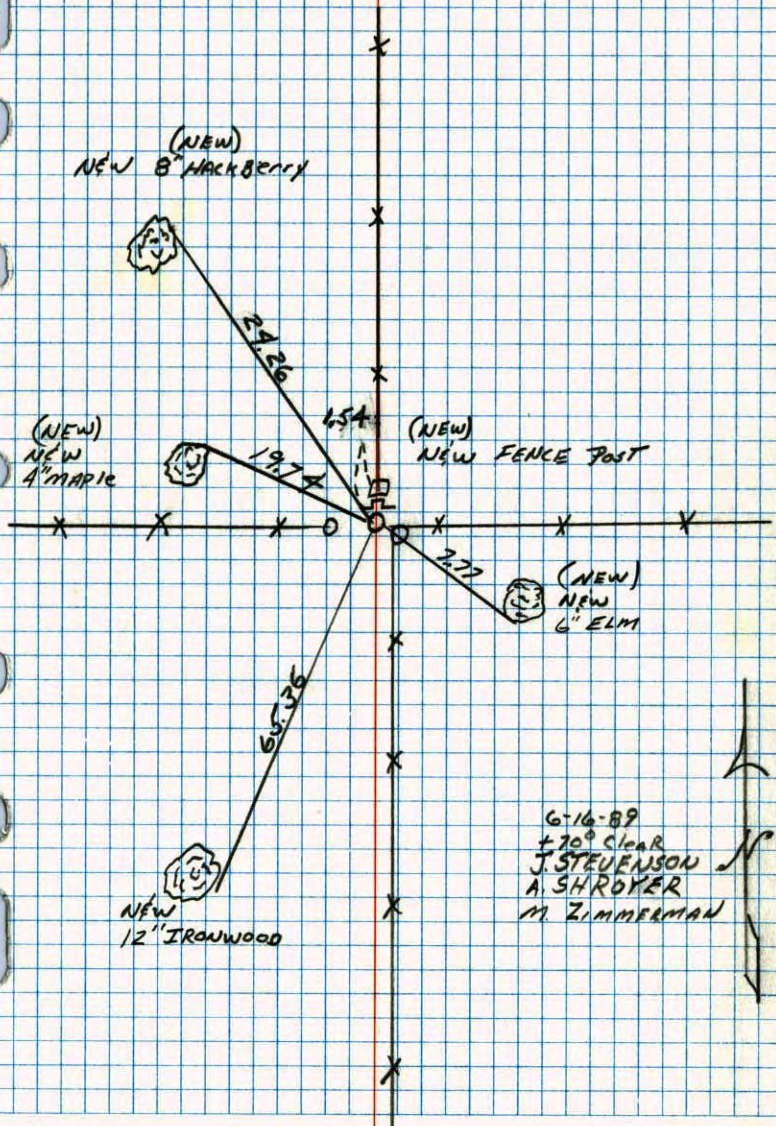


Revised date	Revised date	Revised date
7-29-76		
7-23-79		
8-10-82		
7-12-85		
6-16-89		
7-12-94		
2-26-03		



SOUTHWEST CORNER SECTION 28 TWP. 33 R. 25

RETIE CAST IRON MONUMENT WITH SIGN POST



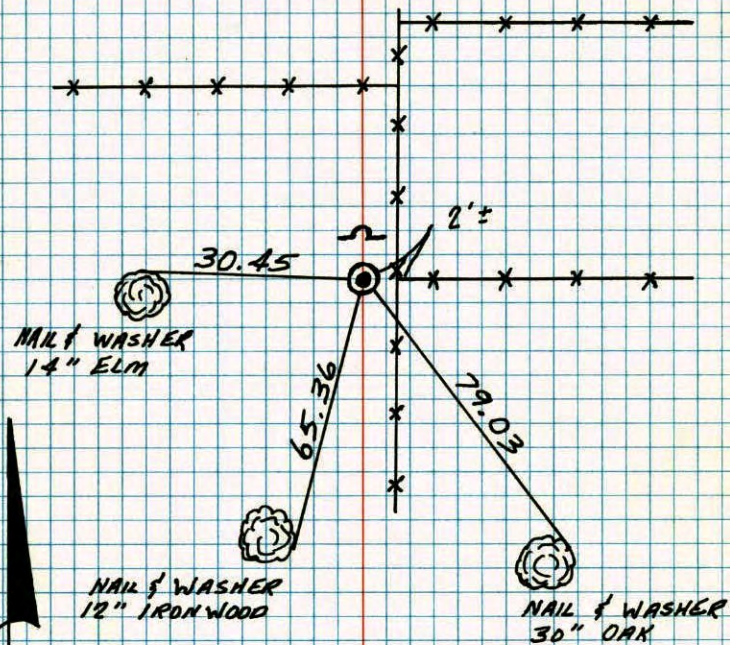
6-16-89  
 ± 70° CLEAR  
 J. STEVENSON  
 A. SHROYER  
 M. ZIMMERMAN

NO. 448 TELEPHONE

S.W. COR. SEC. 28 - T33 - R25

SET CAST IRON MONUMENT FROM AREA RESURVEY

SET STEEL SIGNPOST WITH WARNING SIGN  
 1/2' ± NORTH OF MONUMENT.



20 JUL 71  
 MO ANDERSON  
 H. J. LARSON

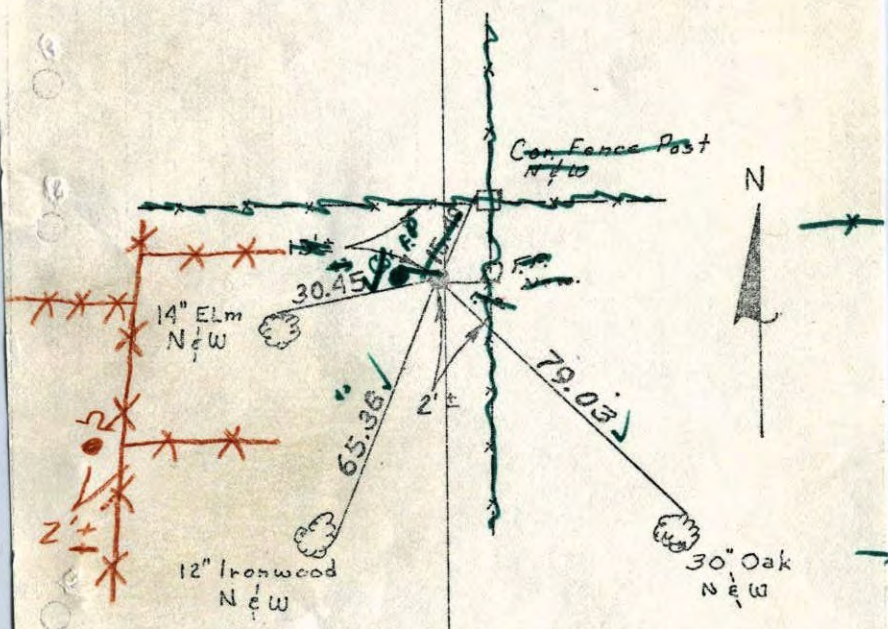
TIE CHECK	TIECHECK	TIECHECK
7-29-76	7-23-79	8-10-82
G. ADAMS	B. STEPHENS	P. ROSS
S. BRIEN	D. STEPHENS	P. HORNBY
J. STEPHENS	P. ROSS	

ROLAND W. ANDERSON  
 COUNTY SURVEYOR  
 ANOKA COUNTY, MINNESOTA

TEMPERATURE CORRECTED  
 AND HORIZONTALLY  
 TAPED MEASUREMENTS

S.W. Cor. Sec. 28 - T33 - R25

Set Cast Iron Mon.  
Set From Area Resurvey  
Set Steel Signpost With Warning Sign  
1/2' ± N. OF Mon.



July 20, 1971  
M.D. Anderson  
H.J. Larson  
Temp. 80°  
Tape #11

TEMPERATURE CORRECTED  
AND HORIZONTALLY  
TAPED MEASUREMENTS

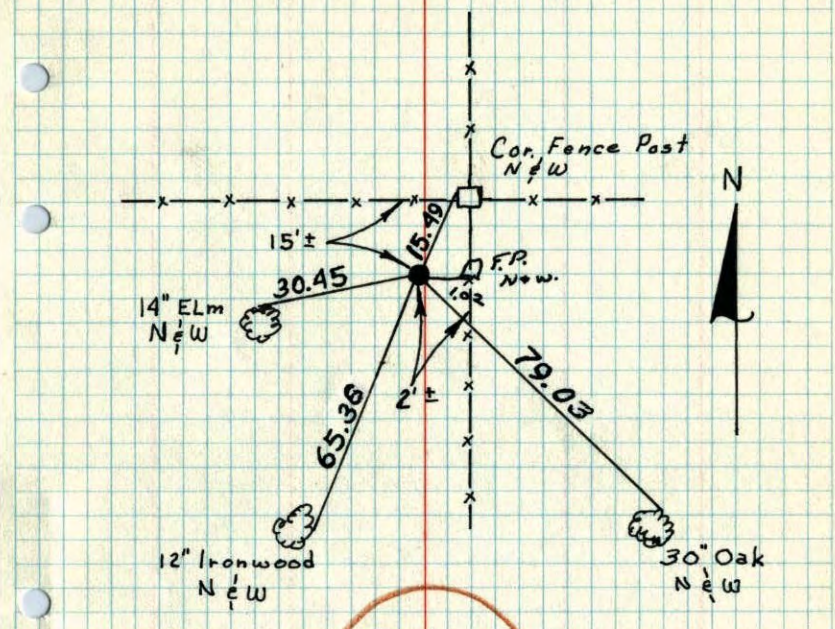
Tie check  
Aug. 9, 1973  
B. Olson  
D.B.  
D.F.

Tie Check  
7-29-76  
G. Adams  
S. Brian  
J. Stephens  
T. 84°

ROLAND W. ANDERSON  
COUNTY SURVEYOR  
ANOKA COUNTY, MINNESOTA

S.W. Cor. Sec. 28 - T33 - R25

Set Cast Iron Mon.  
Set From Area Resurvey  
Set Steel Signpost With Warning Sign  
1/2' ± N. OF Mon.



July 20, 1971  
M.D. Anderson  
H.J. Larson  
Temp. 80°  
Tape #11

SEE  
NEW  
TIES

Tie check  
Aug. 9, 1973  
B. Olson  
D.B.  
D.F.

TEMPERATURE CORRECTED  
AND HORIZONTALLY  
TAPED MEASUREMENTS

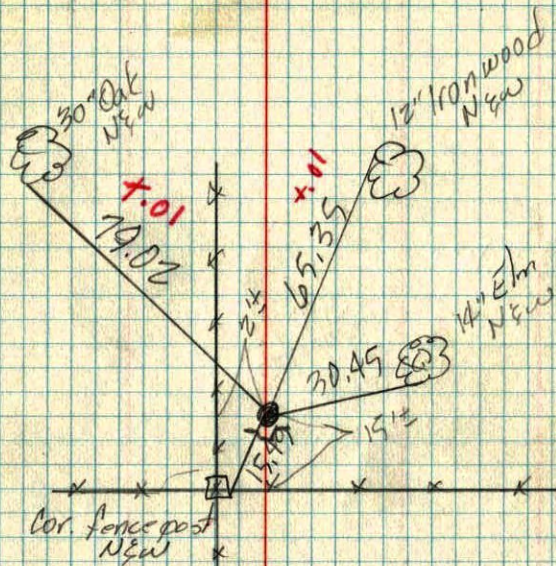
ROLAND W. ANDERSON  
COUNTY SURVEYOR  
ANOKA COUNTY, MINNESOTA

S.W. Cor. Sec. 28-T33-R25

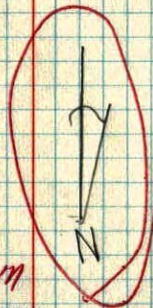
set C.I. Mon.

set from area resurvey

set steel sign post with warning  
sign to E of Mon.



turn over  
when drawn



July 20, 1971  
M. D. Anderson  
H. J. Larson  
Temp. 80°  
Tape #11

TEMPERATURE CORRECTED  
AND HORIZONTALLY  
TAPED MEASUREMENTS

ROLAND W. ANDERSON  
COUNTY SURVEYOR  
ANOKA COUNTY, MINNESOTA