

11-15-13 PD. PK  
NEEDS E.L.M.

# CERTIFICATE OF LOCATION OF GOVERNMENT CORNER

County of Anoka

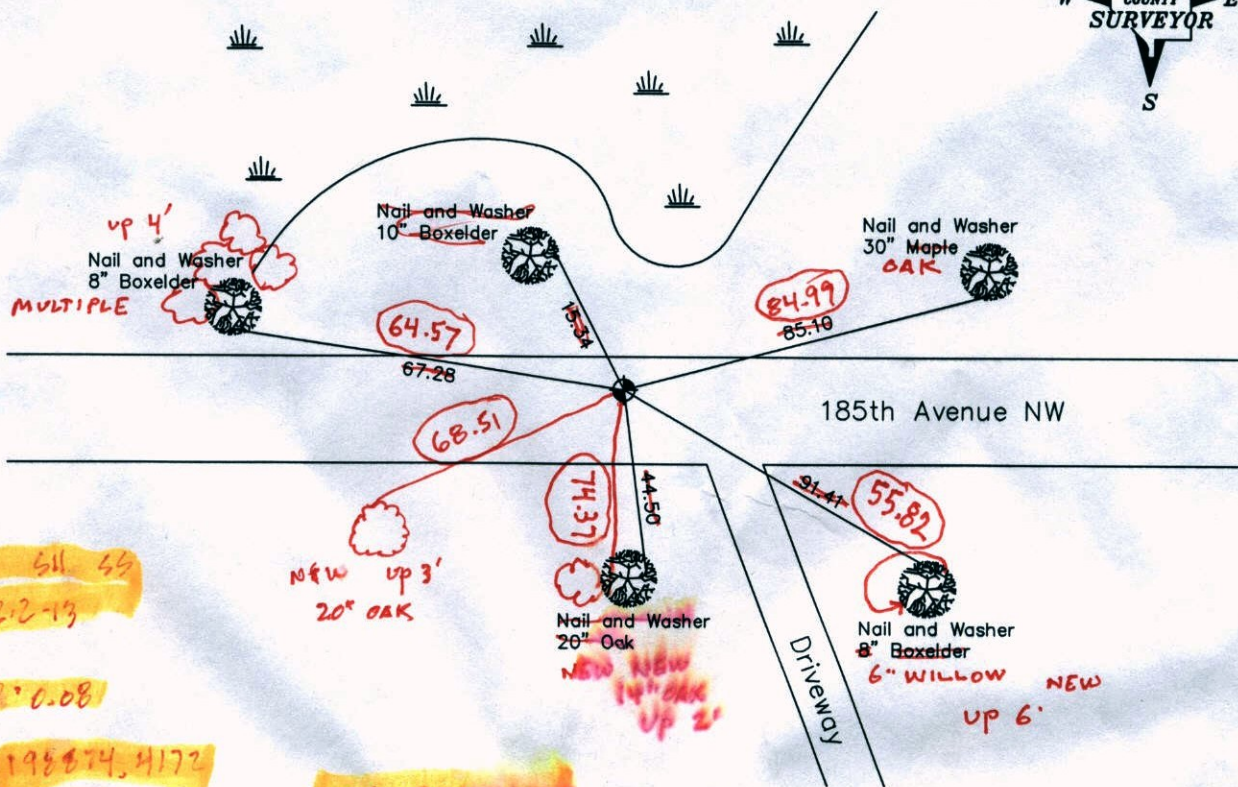
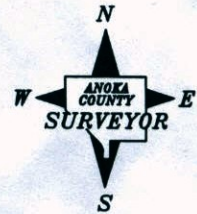
State of Minnesota

## East 1/4 Corner of Sec. 34, Township 33, Range 25

I hereby certify that on the 22nd day of July, 1963, I found the described corner which was evidenced by an 8 inch square monument

and I further certify that to perpetuate the location of said corner, I did, at the exact location thereof, place a permanent marker consisting of a cast iron monument

which reference or witness monuments are located in the manner following:



JS 611 44  
12-2-13  
WBS  
200.0.08  
198874.4172  
458203.4924

SET REMOVABLE  
C/M  
RETIRED CIRCLED  
DIST'S ARE GOOD

Revised date

7-1-85
9-8-88
7-14-94
10-10-02

N.A.D. 1983 Co-ordinates  
(1996 Adjustment)

County Project Co-ordinates		State Plane Co-ordinates	
Northing	198874.3722	Y	_____
Easting	458203.5152	X	_____

Date 9-25-02

EP 4/15/02

# CERTIFICATE OF LOCATION OF GOVERNMENT CORNER

County of Anoka

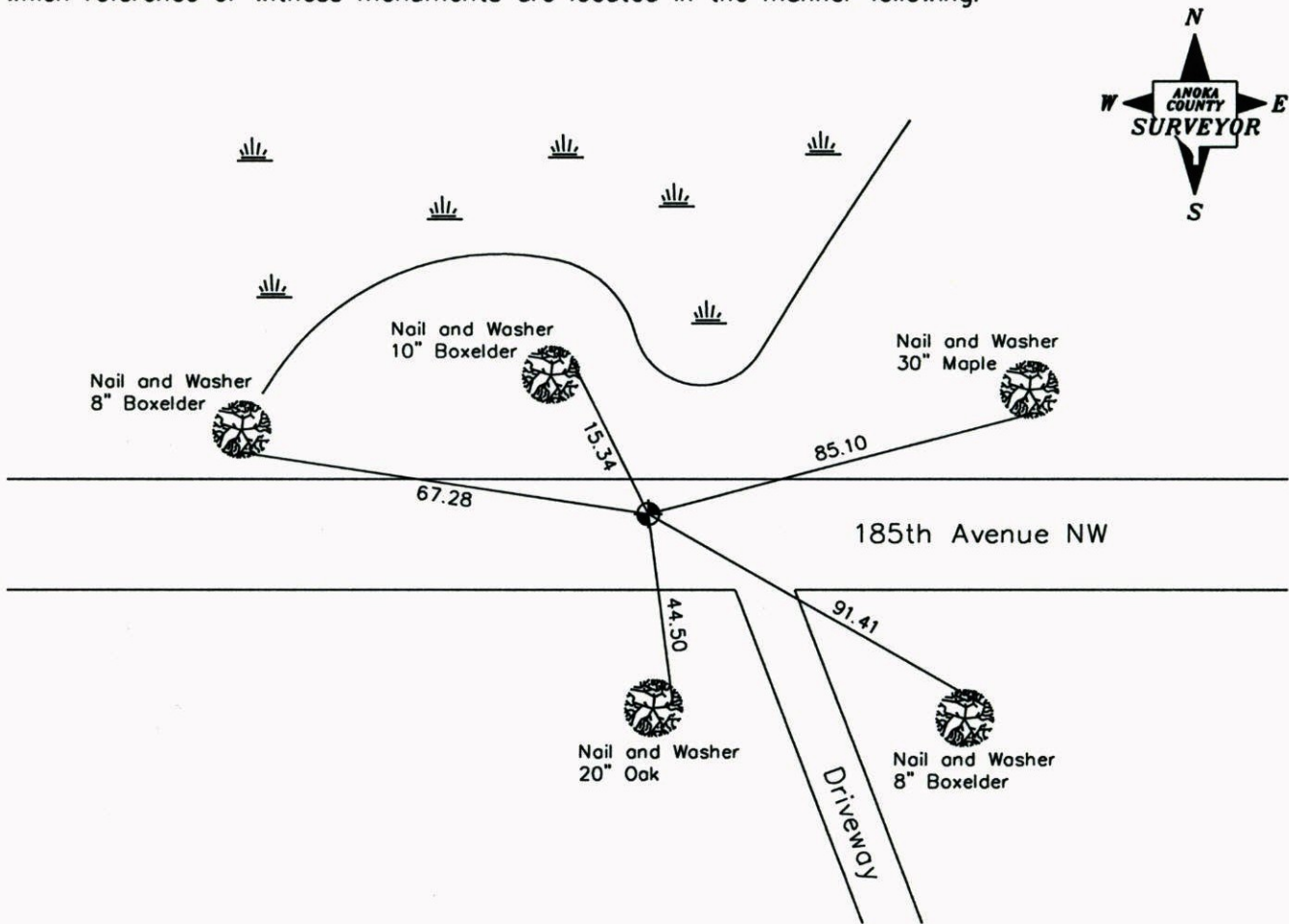
State of Minnesota

## East 1/4 Corner of Sec. 34, Township 33, Range 25

I hereby certify that on the 22nd day of July, 1963, I found the described corner which was evidenced by an 8 inch square monument

and I further certify that to perpetuate the location of said corner, I did, at the exact location thereof, place a permanent marker consisting of a cast iron monument

which reference or witness monuments are located in the manner following:



Revised date

7-1-85
9-8-88
7-14-94
10-10-02

N.A.D. 1983 Co-ordinates  
(1996 Adjustment)

County Project Co-ordinates	State Plane Co-ordinates
Northing <u>198874.3722</u>	Y _____
Easting <u>458203.5152</u>	X _____

Date 9-25-02

# CERTIFICATE OF LOCATION OF GOVERNMENT CORNER

County of Anoka

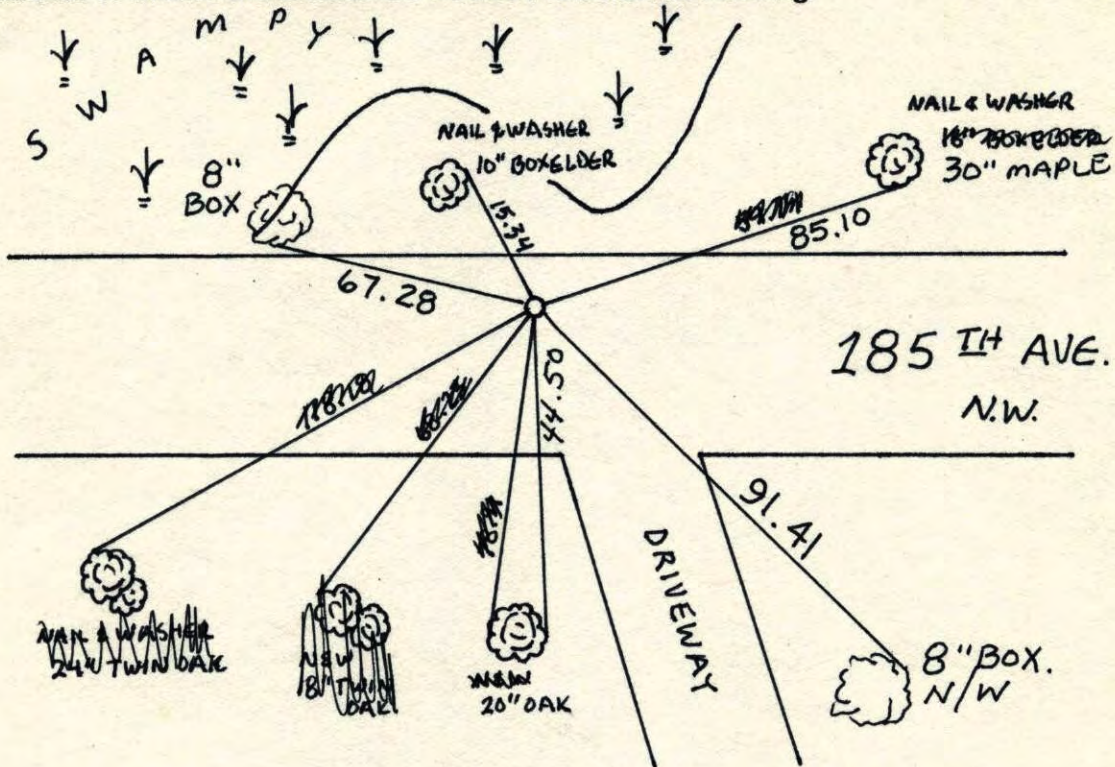
State of Minnesota

EAST 1/4 Corner of Sec. 34 Township 33 Range 25

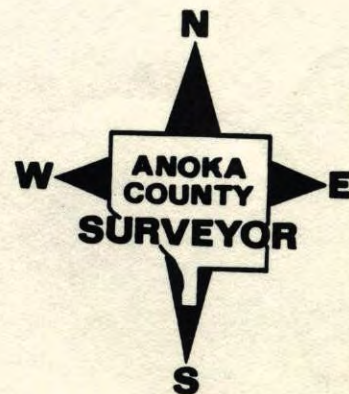
I hereby certify that on the 22 day of JULY, 19 63, I found the described corner which was evidenced by 8" SQUARE GRANITE MONUMENT

and I further certify that to perpetuate the location of said corner, I did, at the exact location thereof, place a permanent marker consisting of CAST IRON MONUMENT

which reference or witness monuments are located in the manner following:



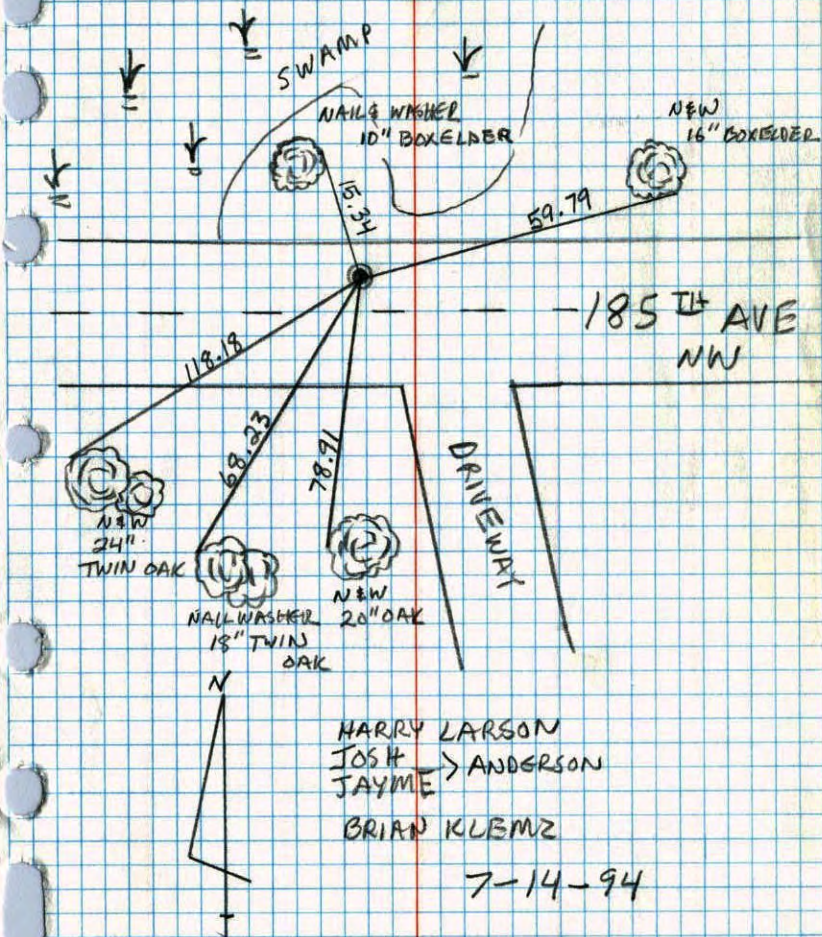
Revised date	Revised date	Revised date
7-1-85		
9-8-88		
7-14-94		
10-10-02		



19.115

E 1/4 Sec. 34 Tw. 33 R. 25

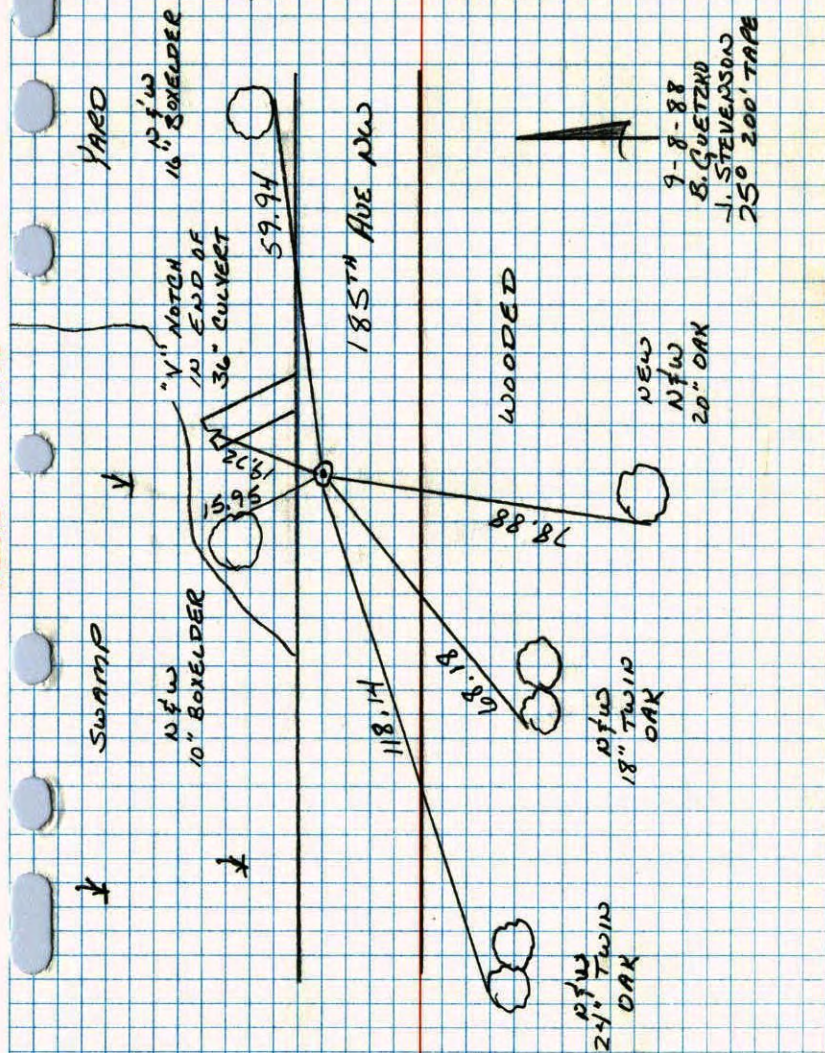
RESET CAST IRON MONUMENT  
AFTER CONSTRUCTION



115

E 1/4 CORNER SEC 34 T33 R25

RETIRED CAST IRON MONUMENT ON TOP  
OF A GRANITE MONUMENT

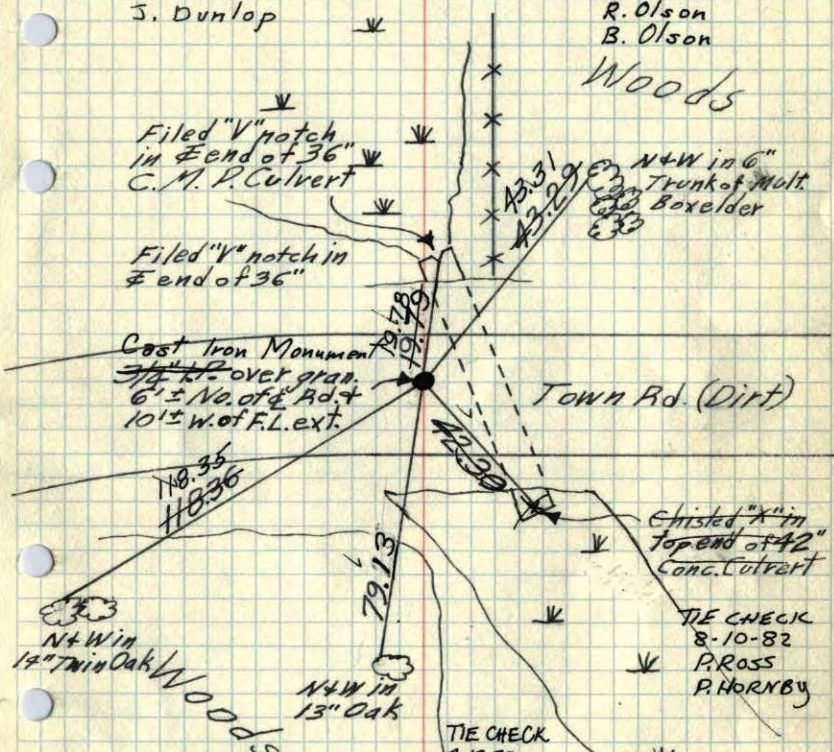


E 1/4 Cor. Sec. 34, T.33 R.25

Found 8" Sq. Granite Mon. down 12" and leaning slightly NW. Straightened up and tied. Set 3/4" I.P. flush over center of Granite.

Tie check  
Aug 16, 1965  
M.D. Anderson  
S. Dunlop

Set C.I. Monument on top of Granite down 0.5"  
July 24, 1969  
D. Powell  
R. Olson  
B. Olson



TEMPERATURE CORRECTED AND HORIZONTALLY TAPED MEASUREMENTS

ROLAND W. ANDERSON  
COUNTY SURVEYOR  
ANOKA COUNTY, MINNESOTA

TIE CHECK 7-13-79 B. STEPHENS  
D. STEPHENS  
P. ROSS  
TAPE #4

22 July 63  
J. Oliver  
M.D. Anderson  
R. Carlson

Tie Check July 24, 1973 B. Olson D. Brien D. Farmer

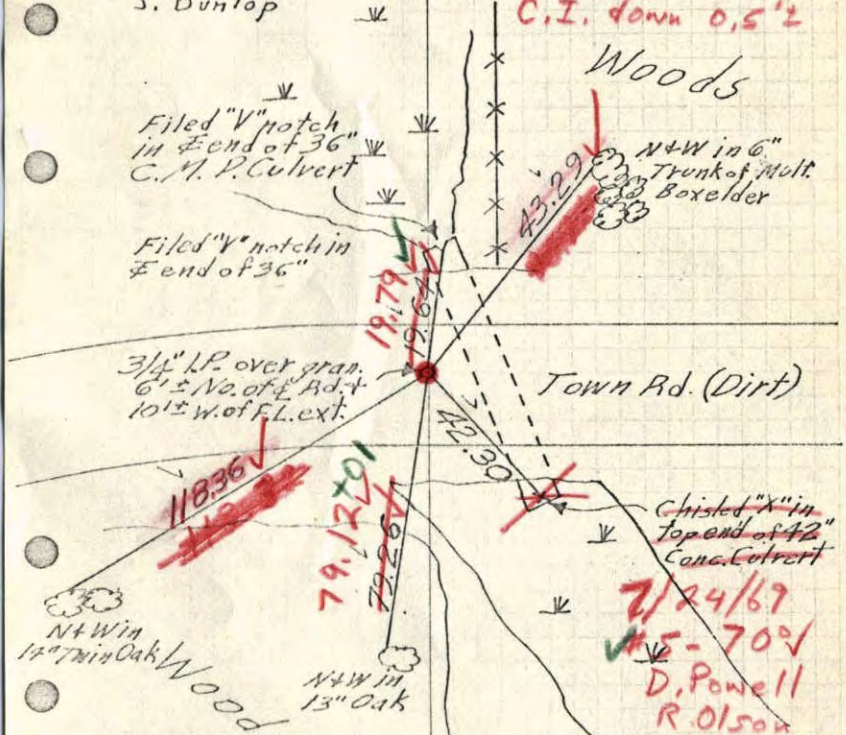
TIE CHECK 8-2-76 G. ADAMS 3 BRIEN J STEPHENS

E 1/4 Cor. Sec. 34, T.33 R.25

Found 8" Sq. Granite Mon. down 12" and leaning slightly NW. Straightened up and tied. Set 3/4" I.P. flush over center of Granite.

Tie check  
Aug 16, 1965  
M.D. Anderson  
S. Dunlop

Iron Pipe not over center. Placed short C.I. over center + retied. C.I. down 0.5"



TEMPERATURE CORRECTED AND HORIZONTALLY TAPED MEASUREMENTS

ROLAND W. ANDERSON  
COUNTY SURVEYOR  
ANOKA COUNTY, MINNESOTA

2/24/67  
115-70°  
D. Powell  
R. Olson  
B. Olson

22 July 63  
J. Oliver  
M.D. Anderson  
R. Carlson

E 1/4 Cor. Sec. 34, T 33, R 25

Found 8" Sq. Granite Mon. down 15"

and leaning slightly NW, Straightened up  
and tied. Set 3/4" I.P. Flush over  
Center of Granite

