

CERTIFICATE OF LOCATION OF GOVERNMENT CORNER

County of Anoka

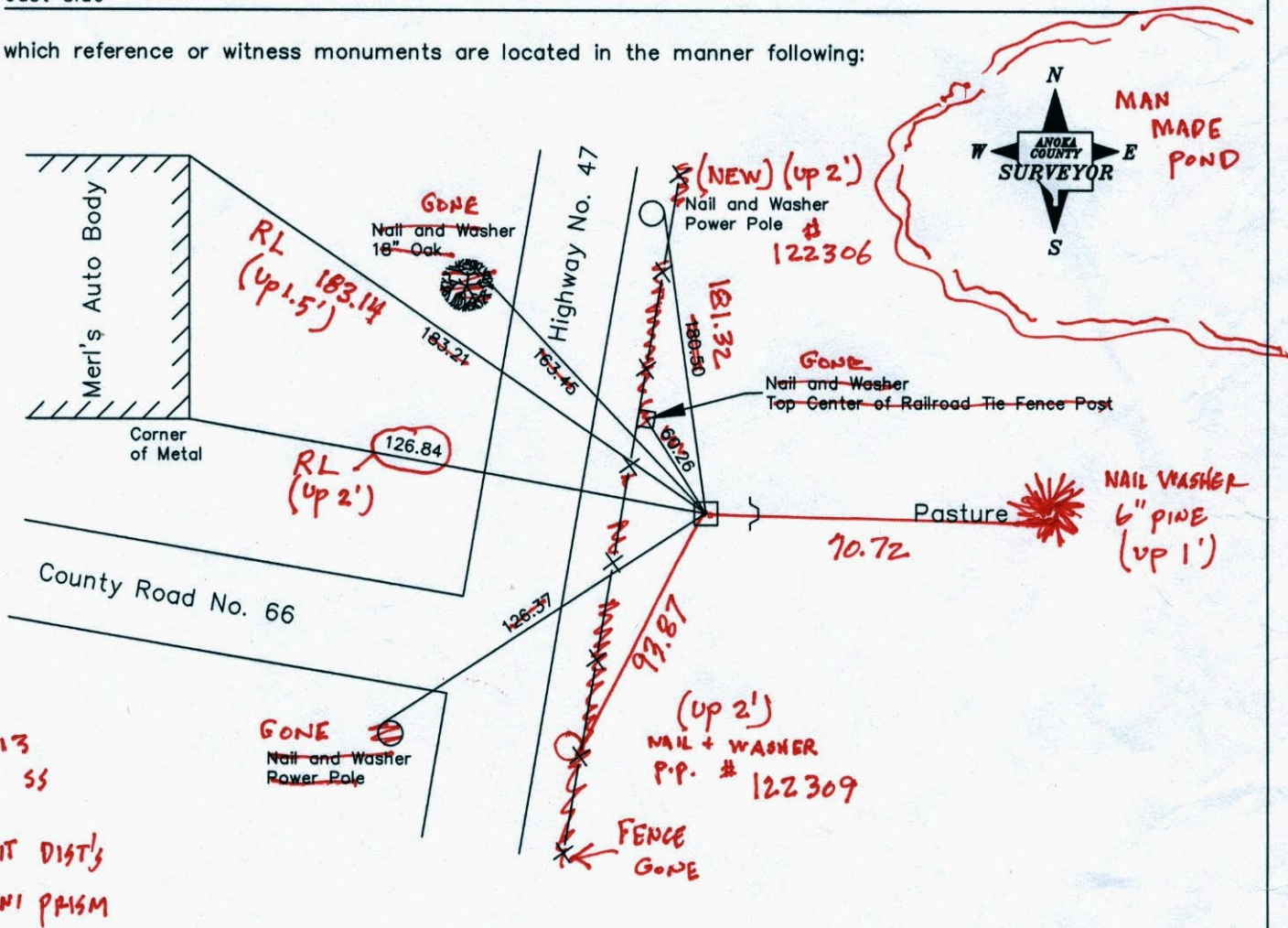
State of Minnesota

West 1/4 Corner of Sec. 36, Township 33, Range 25

I hereby certify that on the 15th day of October, 1963, I found the described corner which was evidenced by a 6 inch by 6 inch granite monument

and I further certify that to perpetuate the location of said corner, I did, at the exact location thereof, place a permanent marker consisting of a granite monument with a sign and post on the east side

which reference or witness monuments are located in the manner following:



5-17-13
SS SH SS

TRANSIT DIST'S
W/ MINI PRISM

Revised date

7-1-85
9-2-88
9-15-92
7-25-94
10-10-02

VR5
COORD'S
30 = 0.06

N.A.D. 1983 Co-ordinates
(1996 Adjustment)

County Project Co-ordinates		State Plane Co-ordinates	
Northing	198835.5031	Y	_____
Easting	463415.8393	X	_____

198835.5434
463415.7856

Date 10-10-02

CERTIFICATE OF LOCATION OF GOVERNMENT CORNER

County of Anoka

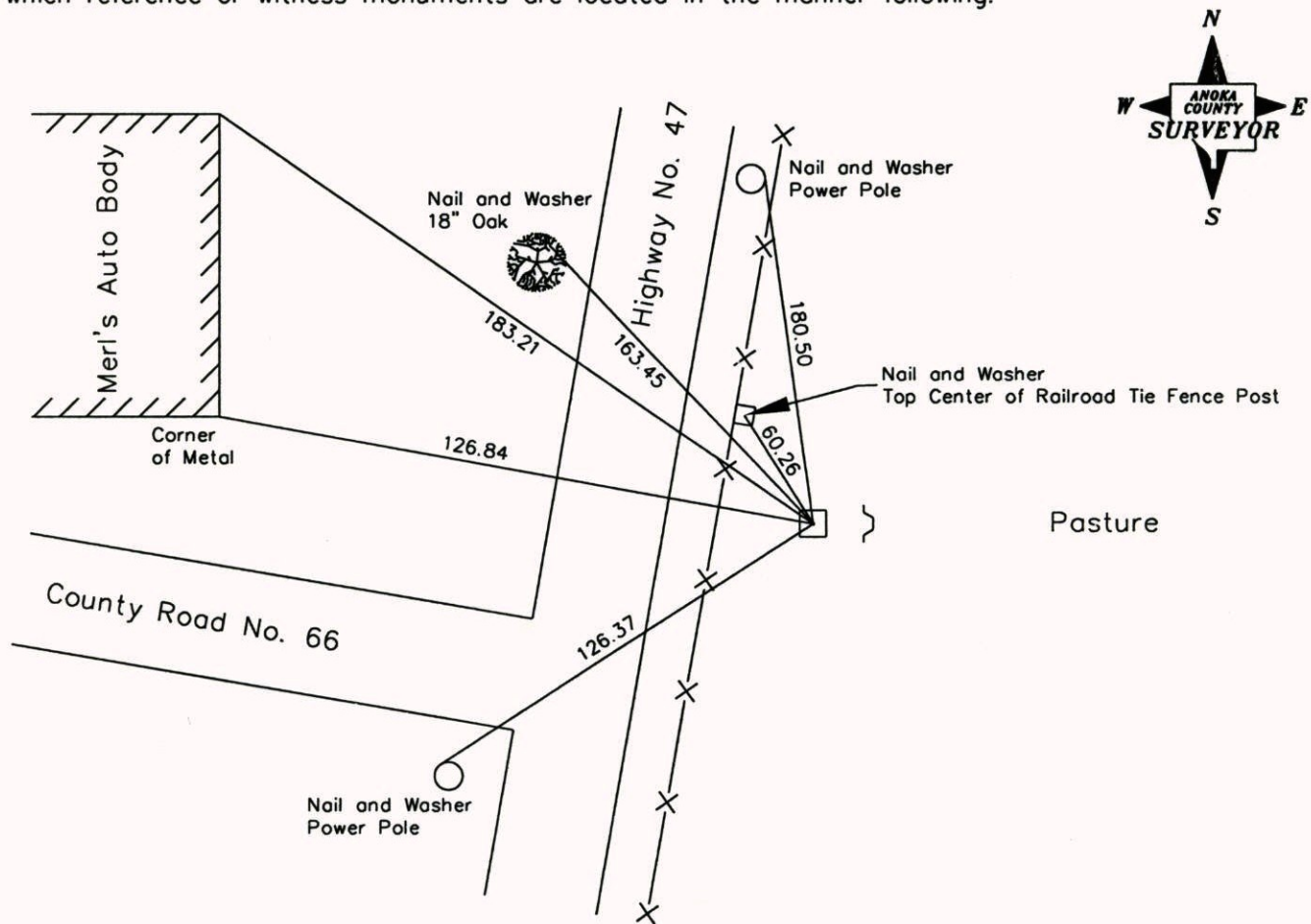
State of Minnesota

West 1/4 Corner of Sec. 36, Township 33, Range 25

I hereby certify that on the 15th day of October, 1963, I found the described corner which was evidenced by a 6 inch by 6 inch granite monument

and I further certify that to perpetuate the location of said corner, I did, at the exact location thereof, place a permanent marker consisting of a granite monument with a sign and post on the east side

which reference or witness monuments are located in the manner following:



Revised date

7-1-85
9-2-88
9-15-92
7-25-94
10-10-02

N.A.D. 1983 Co-ordinates
(1996 Adjustment)

County Project Co-ordinates	
Northing	<u>198835.5031</u>
Easting	<u>463415.8393</u>

State Plane Co-ordinates	
Y	_____
X	_____

Date 10-10-02

CERTIFICATE OF LOCATION OF GOVERNMENT CORNER

County of Anoka

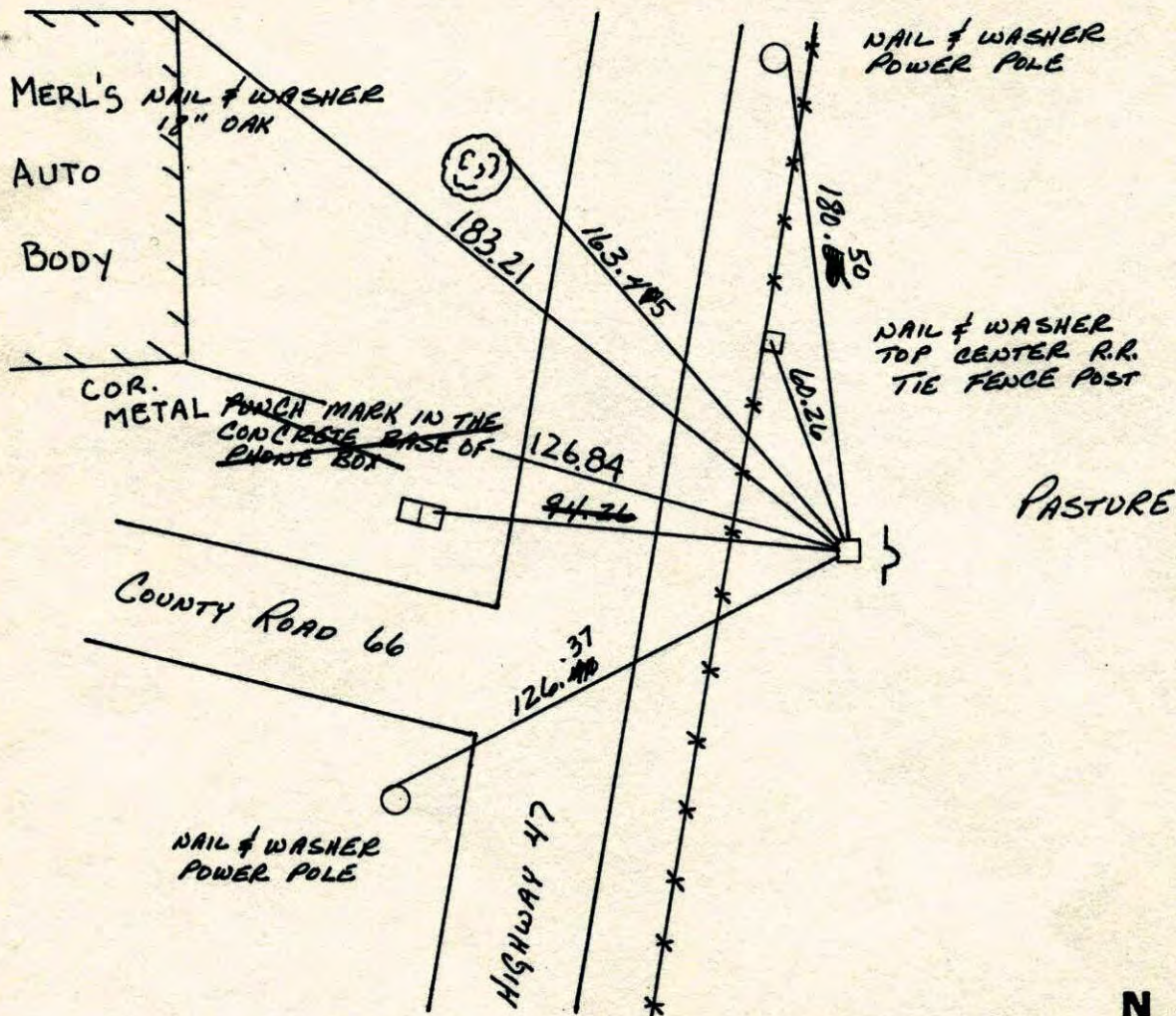
State of Minnesota

WEST 1/4 Corner of Sec. 36 Township 33 Range 25

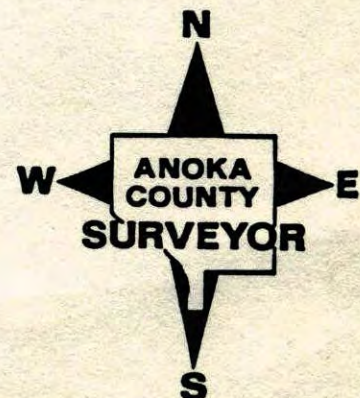
I hereby certify that on the 15 day of OCTOBER, 1963, I found the described corner which was evidenced by 6" x 6" GRANITE MONUMENT

and I further certify that to perpetuate the location of said corner, I did, at the exact location thereof, place a permanent marker consisting of GRANITE MONUMENT WITH SIGN AND POST ON THE EAST SIDE

which reference or witness monuments are located in the manner following:

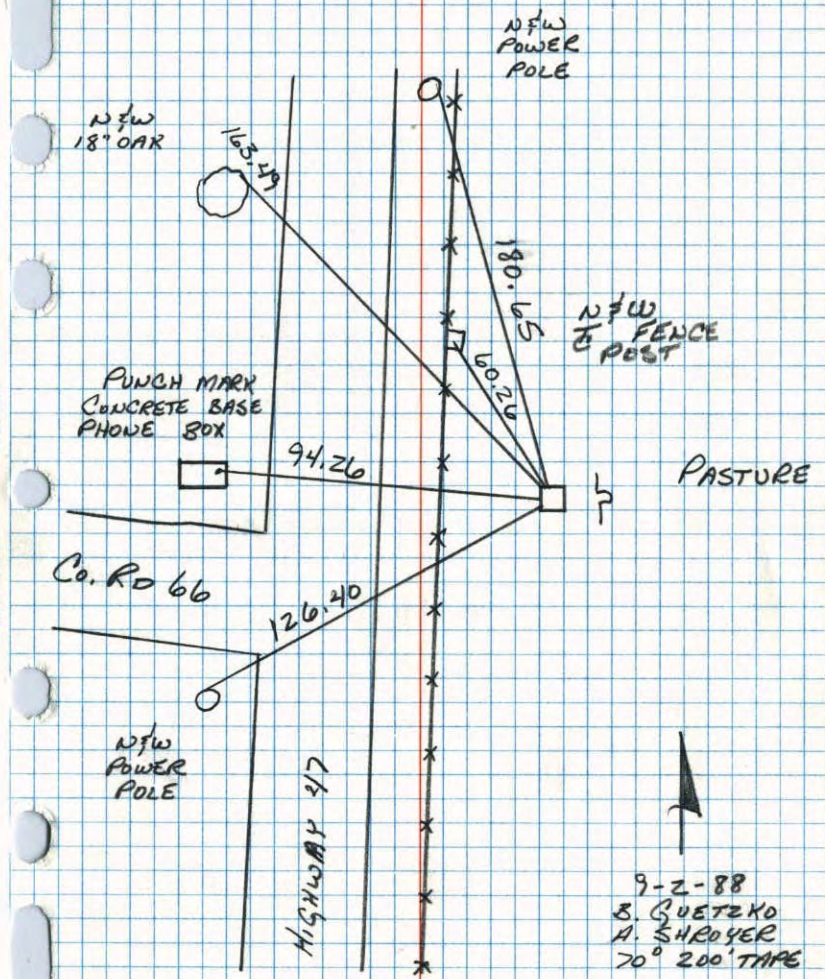


Revised date	Revised date	Revised date
7-1-85		
9-2-88		
9-15-92		
7-25-94		
10-10-02		



W 1/4 CORNER SEC 36 T33 R25

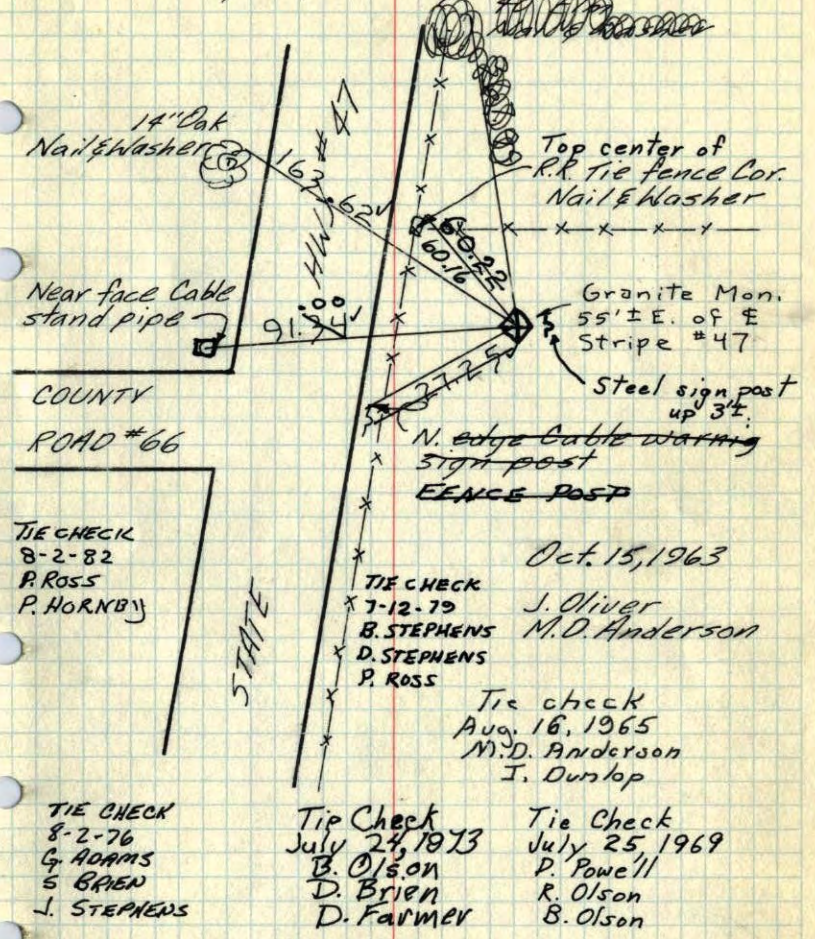
RETIED 6" x 6" GRANITE MONUMENT



NO. 448 TELEPHONE

W 1/4 Cor. Sec. 36-33-25

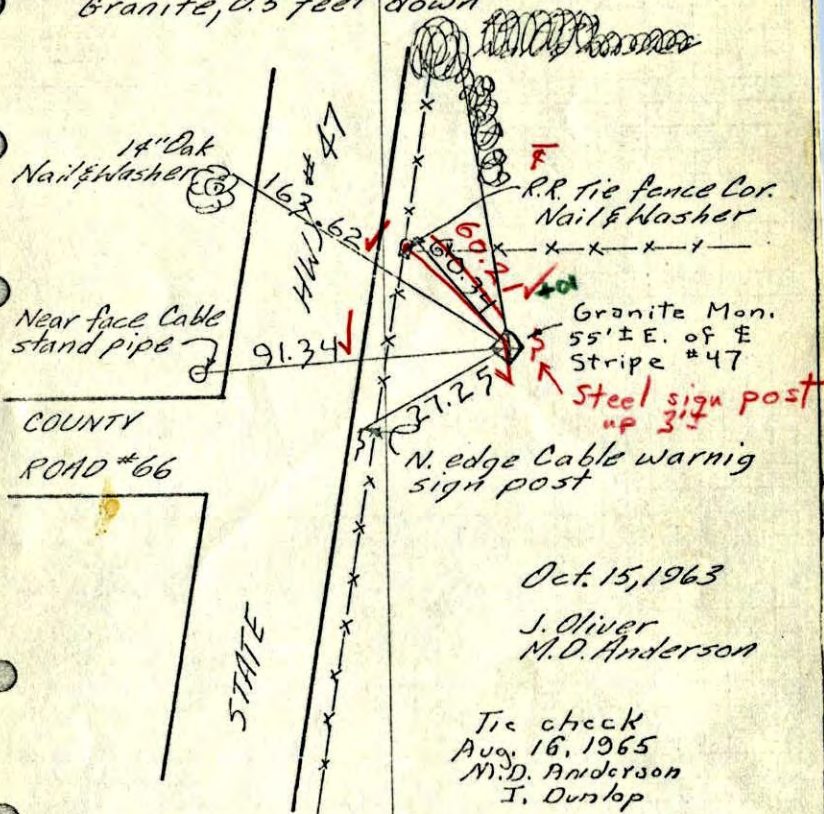
Found 6" x 6" Granite Monument
Granite, 0.5 feet down



TEMPERATURE CORRECTED AND HORIZONTALLY TAPED MEASUREMENTS
ROLAND W. ANDERSON
COUNTY SURVEYOR
ANOKA COUNTY, MINNESOTA

W 1/4 Cor. Sec. 36-33-25

Found 6"x6" Granite Monument
Granite, 0.5 feet down



Oct. 15, 1963
J. Oliver
M.D. Anderson

Tie check
Aug. 16, 1965
M.D. Anderson
I. Dunlop

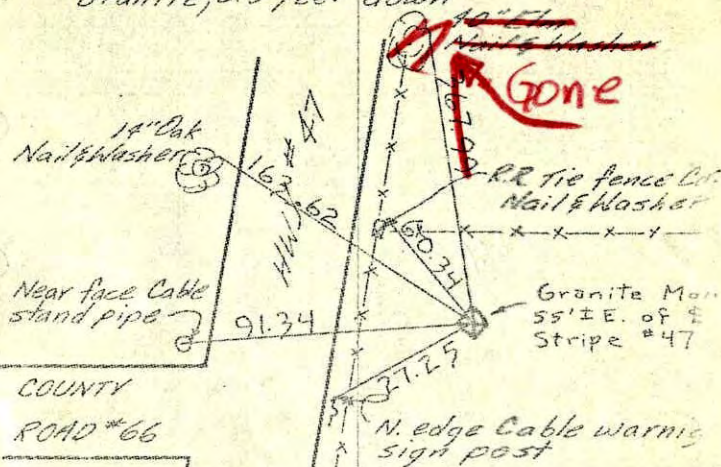
7/25/69
#5-720
D. Powell
R. Olson
B. Olson

TEMPERATURE CORRECTED
AND HORIZONTALLY
TAPED MEASUREMENTS

ROLAND W. ANDERSON
COUNTY SURVEYOR
ANOKA COUNTY, MINNESOTA

W 1/4 Cor. Sec. 36-33-25

Found 6"x6" Granite Monument
Granite, 0.5 feet down



Oct. 15, 1963
J. Oliver
M.D. Anderson

Tie check
Aug. 16, 1965
M.D. Anderson
J. Dunlop

All remaining ties O.K.

TEMPERATURE CORRECTED
AND HORIZONTALLY
TAPED MEASUREMENTS

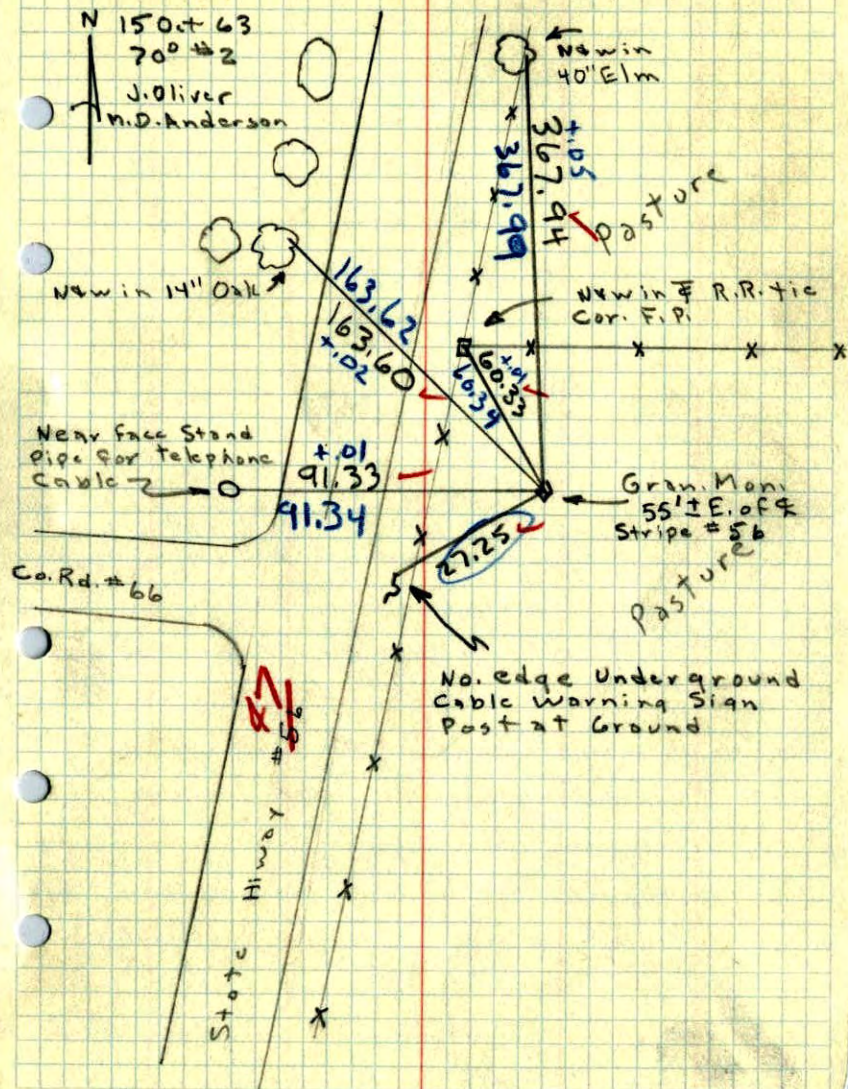
ROLAND W. ANDERSON
COUNTY SURVEYOR
ANOKA COUNTY, MINNESOTA

Entered
AK.

W 1/4 Cor. Sec. 36, T33, R25

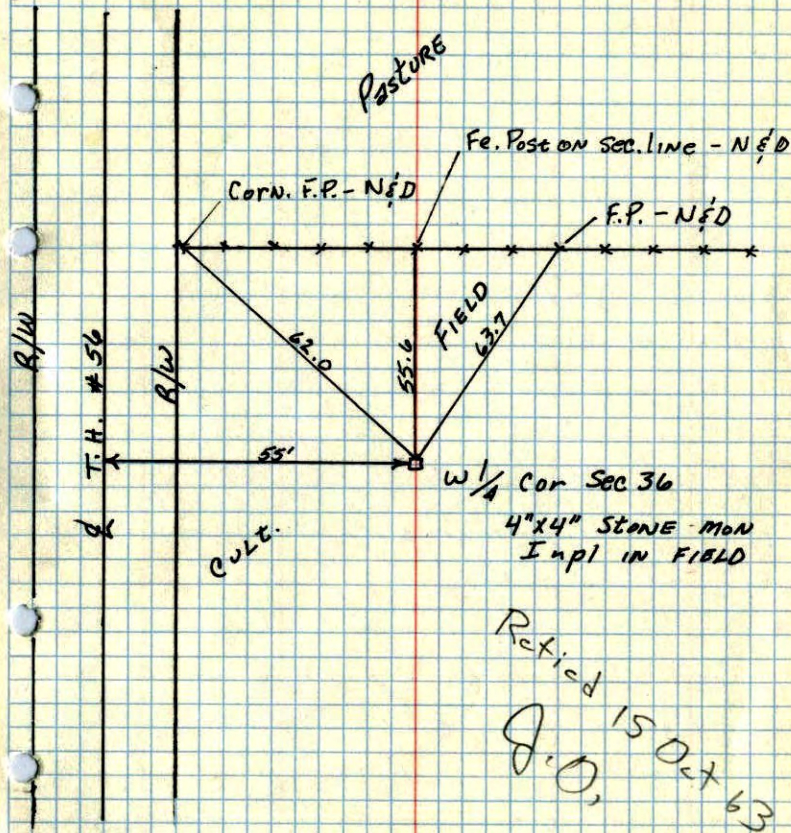
Found ~~Q~~ Sq. Granite Mon. down 0.5' in

Pasture and Set to Cardinal Points.



W 1/4 CORNER OF SEC. 36, T33, R25

30



Revised 15 Oct 63
 J.O.

7/29/55
 E.A. Westman