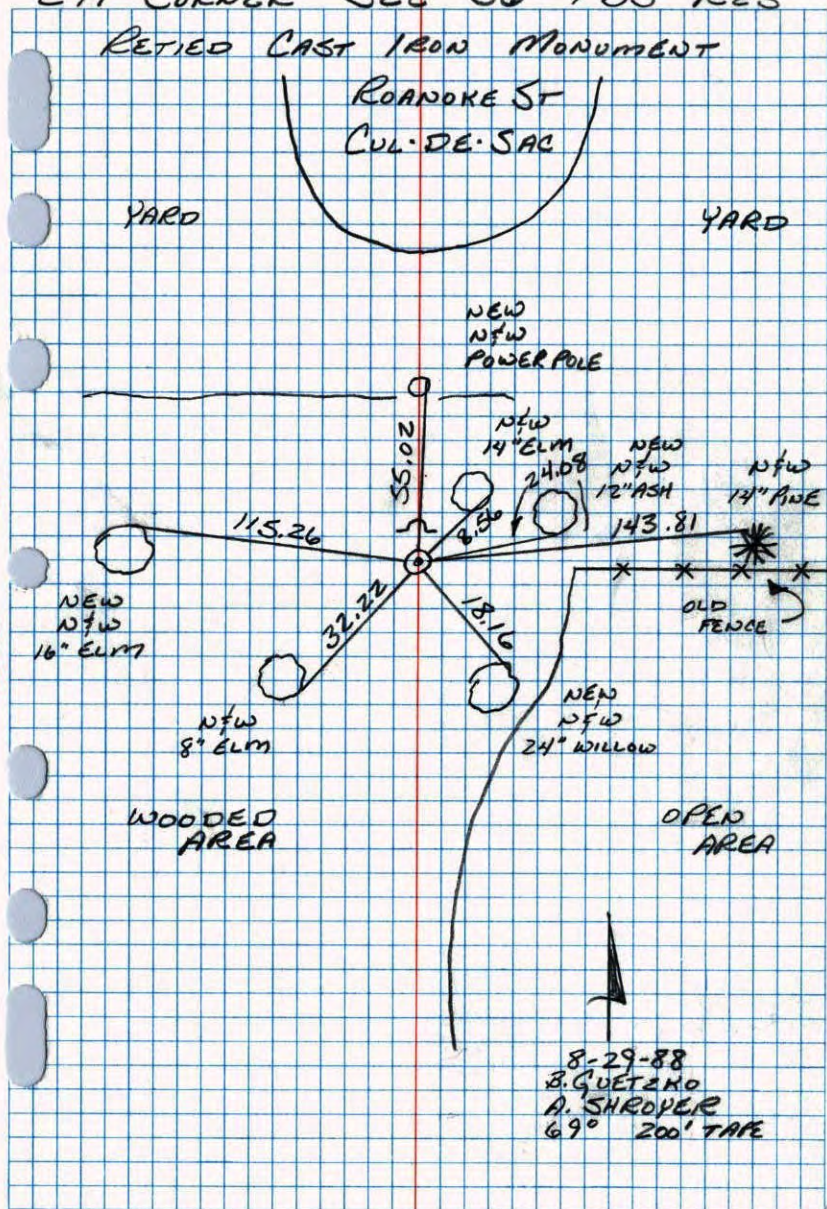


E¹/₄ CORNER SEC 36 T33 R25

RETIED CAST IRON MONUMENT



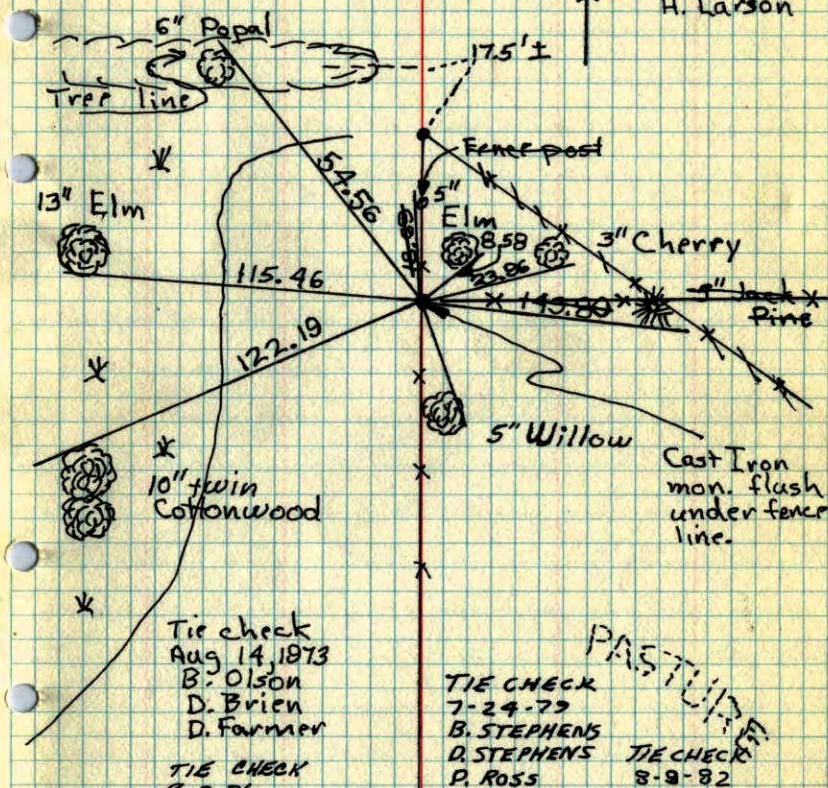
NO. 448

TELEPHONE

E¹/₄ Cor. Sec. 36, T33, R25

Set Cast Iron Monument From Resurvey.

Nails and washers in all tie trees and posts.

SIGN POST 1¹/₂ NORTH OF C.I.
 Dec 13, 1965
 J. Oliver
 M. Anderson
 H. Larson

 Tie check
 Aug 14, 1973
 B. Olson
 D. Brien
 D. Farmer

 TIE CHECK
 8-2-76
 G ADAMS
 J BRIEN
 J STEPHENS

 TIE CHECK
 7-24-79
 B. STEPHENS
 D. STEPHENS
 P. ROSS

 TIE CHECK
 8-9-82
 P. ROSS
 P. HORNBY

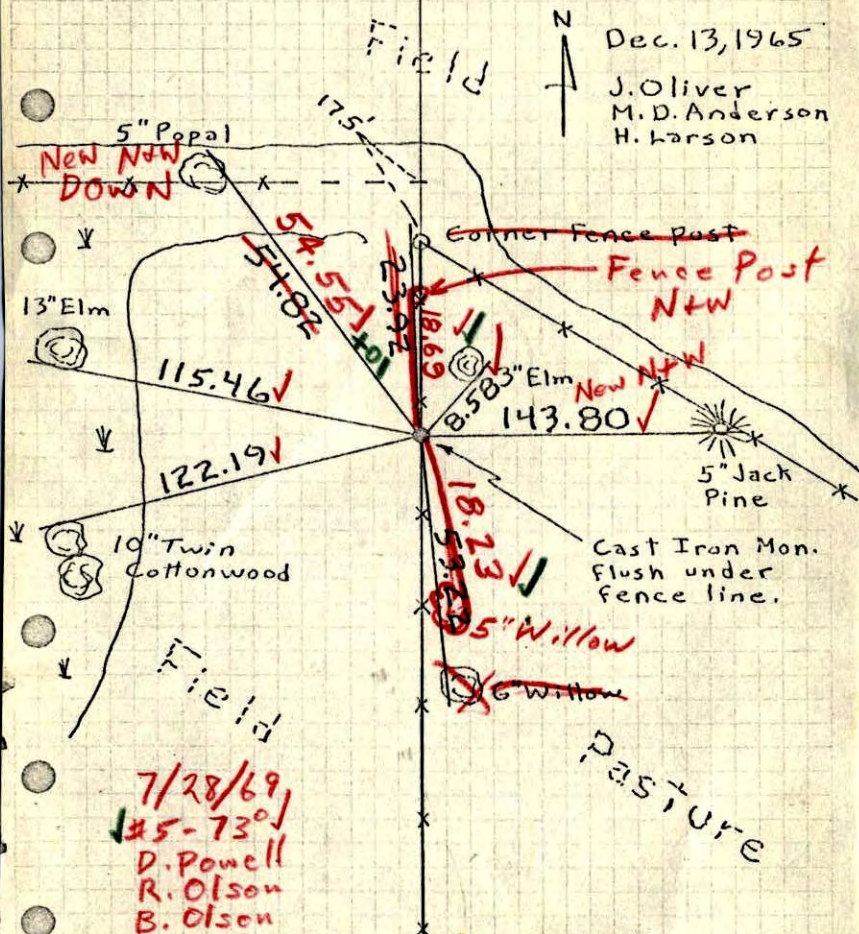
 ROLAND W. ANDERSON
 COUNTY SURVEYOR
 ANOKA COUNTY, MINNESOTA

 TEMPERATURE CORRECT
 AND HORIZONTALLY
 TAPED MEASUREMENT!

E 1/4 Cor. Sec. 36, T33, R25

Set Cast Iron Monument From Resurvey.

● Nails and washers in all tie trees and posts.

TEMPERATURE CORRECTED
AND HORIZONTALLY
TAPED MEASUREMENTSROLAND W. ANDERSON
COUNTY SURVEYOR
ANOKA COUNTY, MINNESOTA

E 1/4 Cor. Sec. 36, T33, R25

Set Cast Iron Monument From Resurvey.

● Nails and washers in all tie
trees and posts.