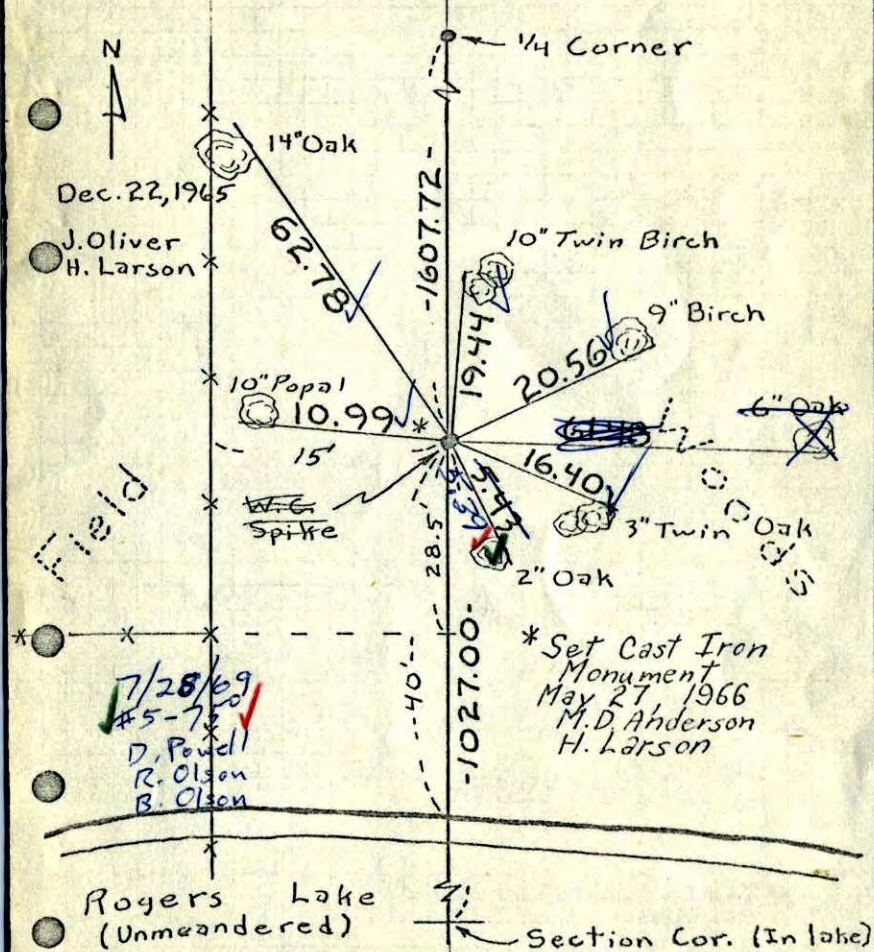


W.C. on E. line Sec. 36, T33, R25

Set Spike from Resurvey. Nails and Washers

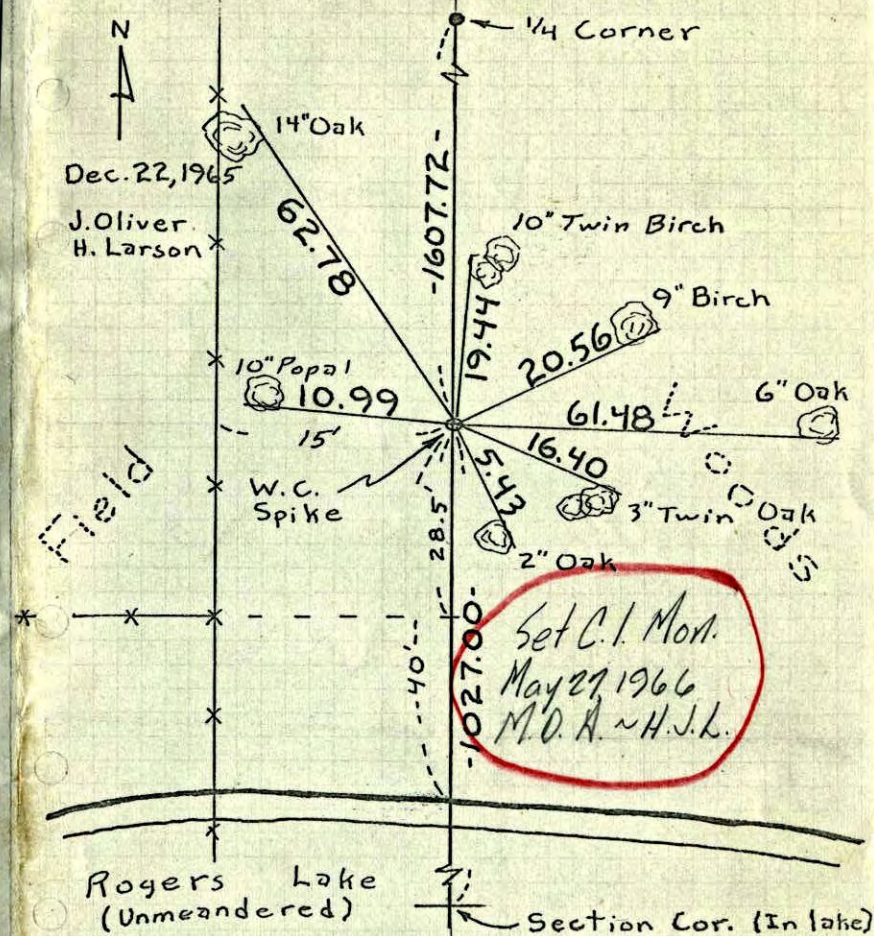
● in all tie trees.

TEMPERATURE CORRECTED
AND HORIZONTALLY
TAPED MEASUREMENTSROLAND W. ANDERSON
COUNTY SURVEYOR
ANOKA COUNTY, MINNESOTA

W.C. on E. line Sec. 36, T33, R25

Set Spike from Resurvey. Nails and Washers

● in all tie trees.

TEMPERATURE CORRECTED
AND HORIZONTALLY
TAPED MEASUREMENTSROLAND W. ANDERSON
COUNTY SURVEYOR
ANOKA COUNTY, MINNESOTA

W.C. on E. line Sec. 36, T33, R 25

Cor. is 1607.72' So. of E 1/4 Cor.

Set Spike from Resurvey. Nails and washers
in all tie trees.

