

CERTIFICATE OF LOCATION OF GOVERNMENT CORNER

County of Anoka

State of Minnesota

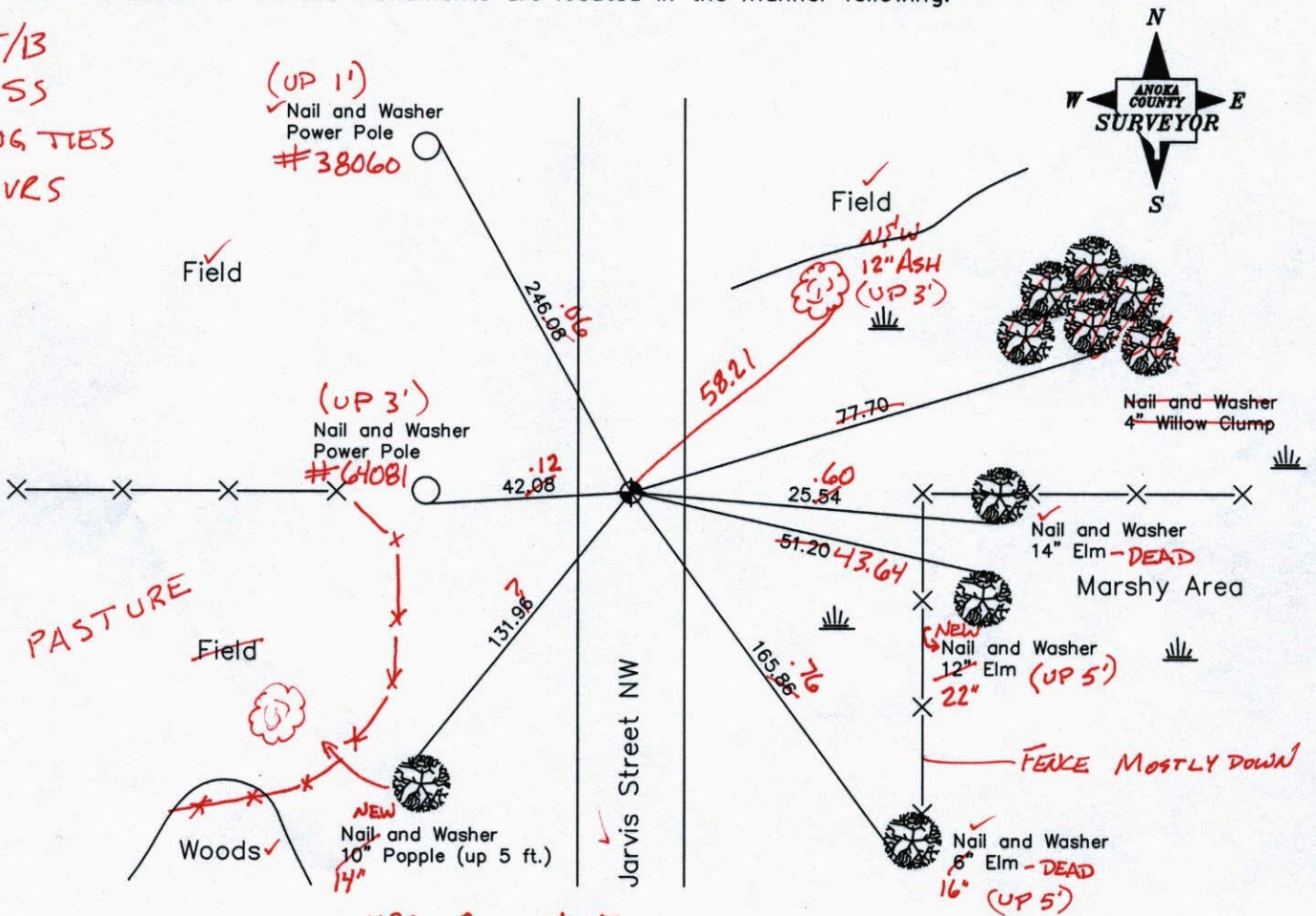
Northwest Corner of Sec. 6, Township 33, Range 25

I hereby certify that on the 9th day of April, 1963, I found the described corner which was evidenced by ANOKA Sherburne County Cast Iron Monument

and I further certify that to perpetuate the location of said corner, I did, at the exact location thereof, place a permanent marker consisting of monument on top of a granite monument with a metal top A.C. C.I.M. 5'± E. of E

which reference or witness monuments are located in the manner following:

11/15/13
JS SH SS
SWING TIES
T/T-VRS



VRS QUAL = 0.07
N: 227825.8220
E: 437533.4117

N.A.D. 1983 Coordinates (1996 Adjustment)

Revised date

6-28-85
8-24-88
6-28-94
5-15-03

County Project Coordinates	
Northing	227825.8421
Easting	437533.4733

State Plane Coordinates	
Y	_____
X	_____

Date 2-6-03

CERTIFICATE OF LOCATION OF GOVERNMENT CORNER

County of Anoka

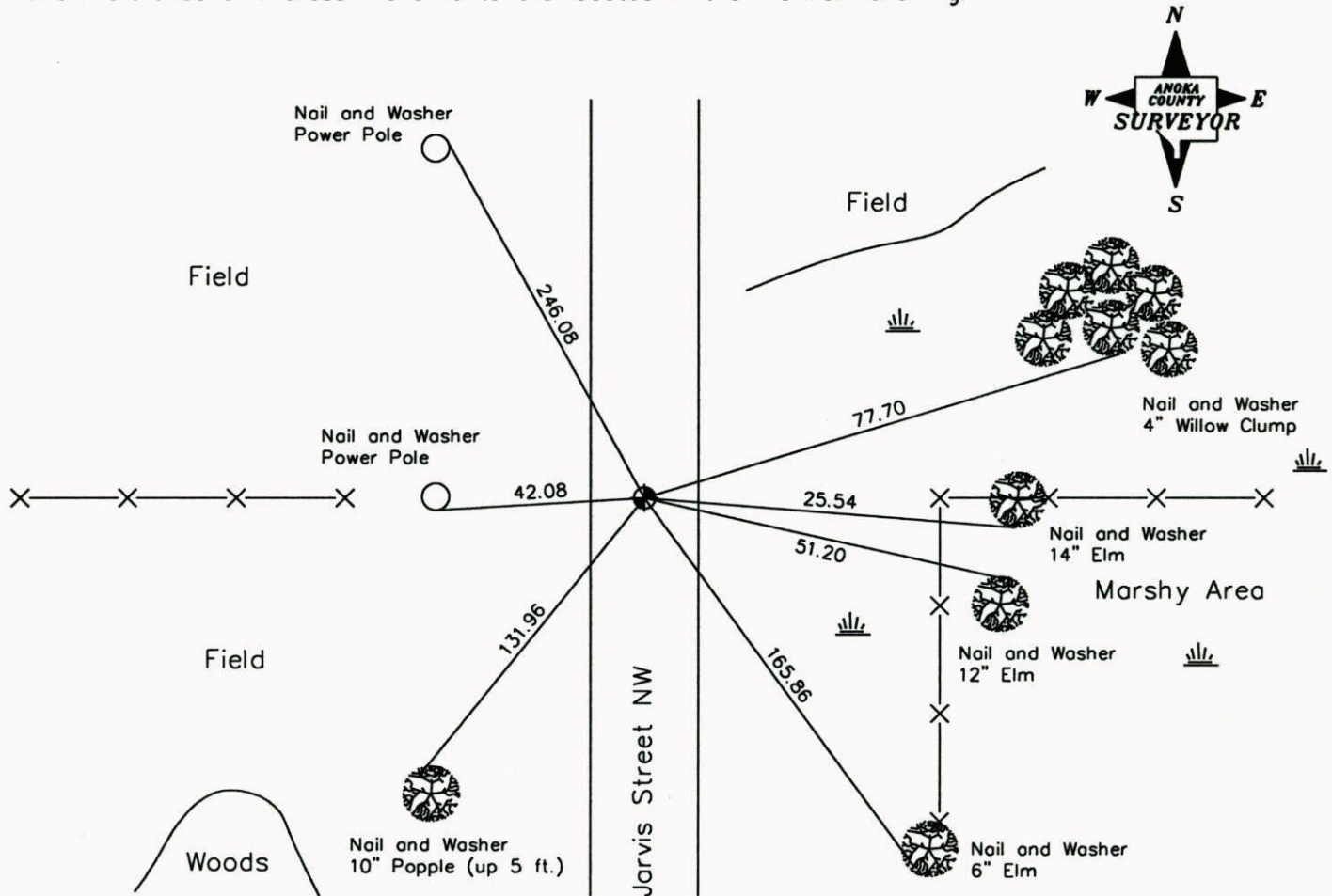
State of Minnesota

Northwest Corner of Sec. 6, Township 33, Range 25

I hereby certify that on the 9th day of April, 1963, I found the described corner which was evidenced by Sherburne County Cast Iron Monument

and I further certify that to perpetuate the location of said corner, I did, at the exact location thereof, place a permanent marker consisting of monument on top of a granite monument with a metal top

which reference or witness monuments are located in the manner following:



Revised date

6-28-85
8-24-88
6-28-94
5-15-03

N.A.D. 1983 Coordinates
(1996 Adjustment)

County Project Coordinates	
Northing	<u>227825.8421</u>
Easting	<u>437533.4733</u>

State Plane Coordinates	
Y	_____
X	_____

Date 2-6-03

CERTIFICATE OF LOCATION OF GOVERNMENT CORNER

County of Anoka

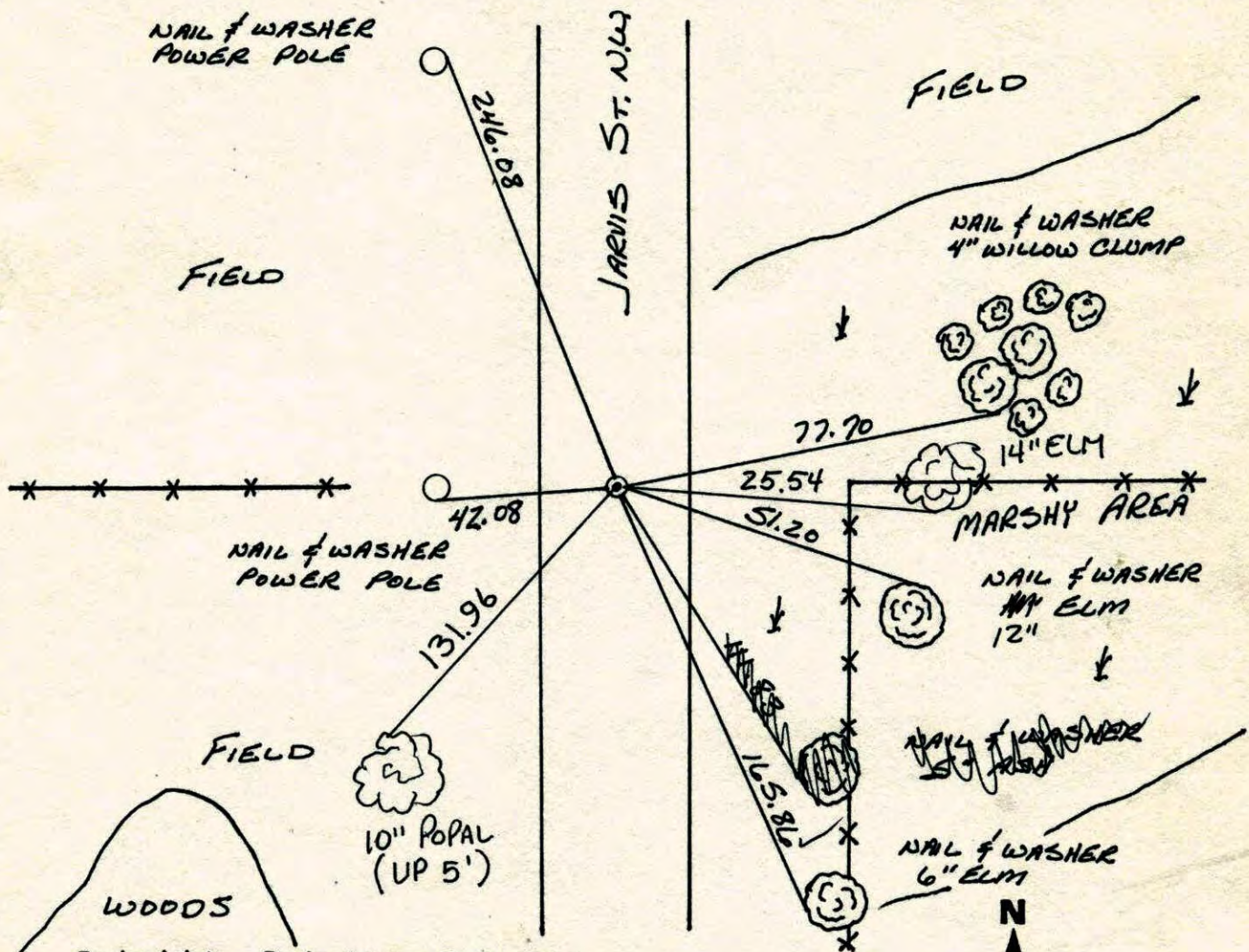
State of Minnesota

NORTHWEST Corner of Sec. 6 Township 33 Range 25

I hereby certify that on the 9 day of APRIL, 1963, I found the described corner which was evidenced by SHERBURNE COUNTY CAST IRON MONUMENT

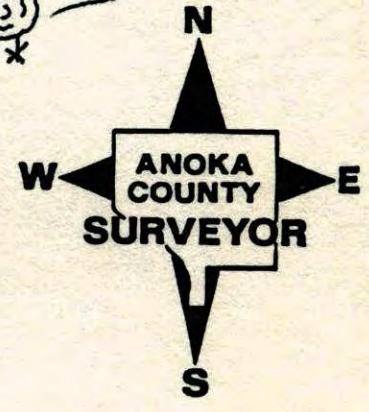
and I further certify that to perpetuate the location of said corner, I did, at the exact location thereof, place a permanent marker consisting of ~~BRASS~~ MON. ON TOP GRANITE MON. WITH METAL TOP

which reference or witness monuments are located in the manner following:

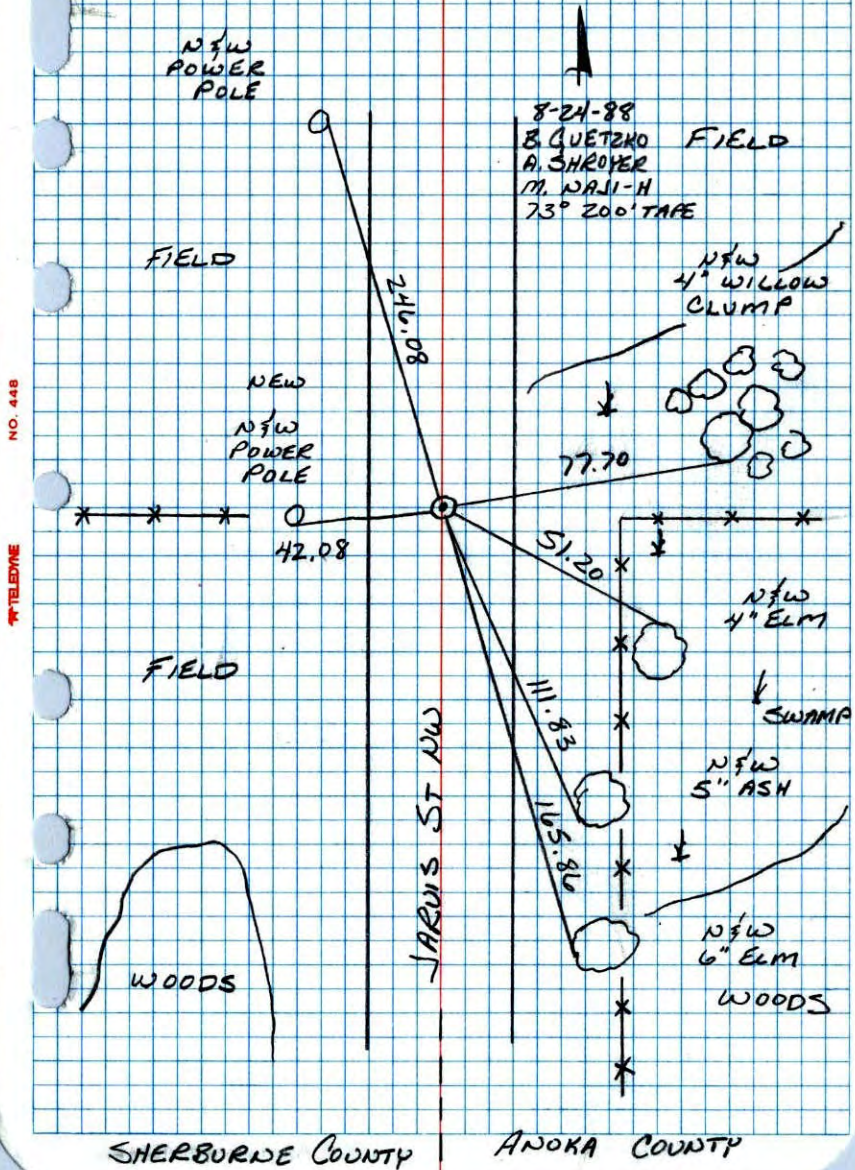


Revised date Revised date Revised date

6-28-85		
8-24-88		
6-28-94		
5-15-03		

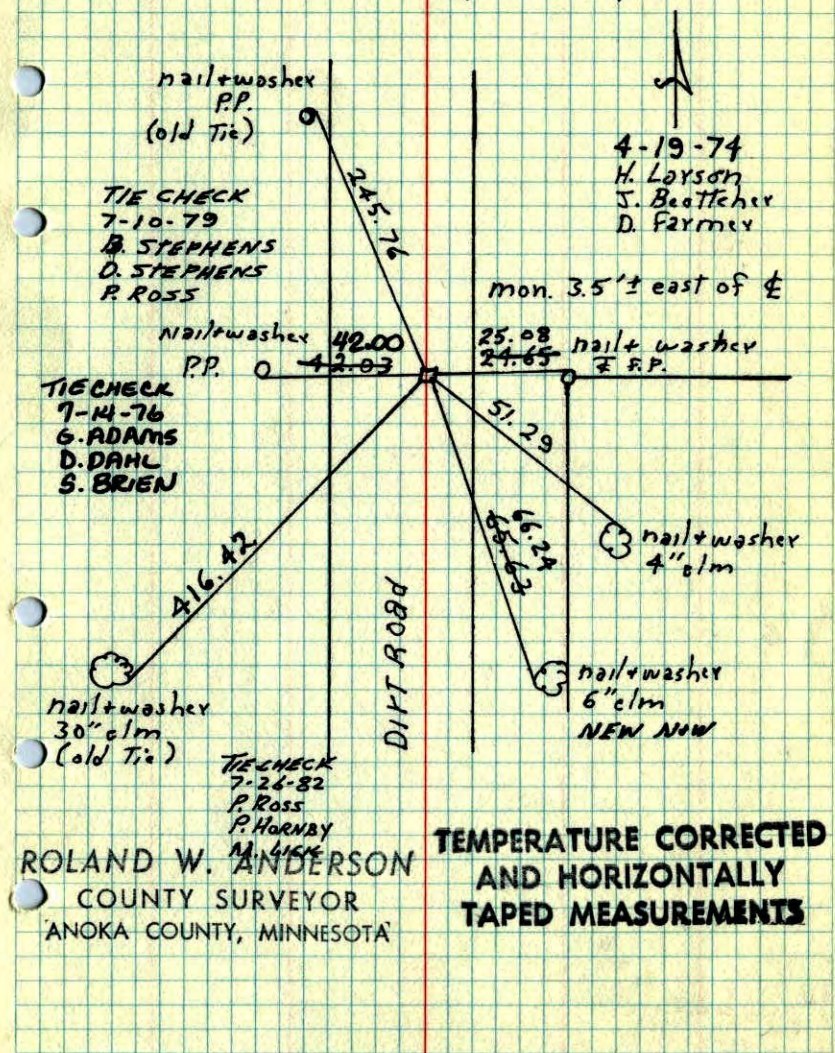


N.W. CORNER SEC 6 T33 R25 RETIED SHERBURNE CO. CAST IRON MONUMENT



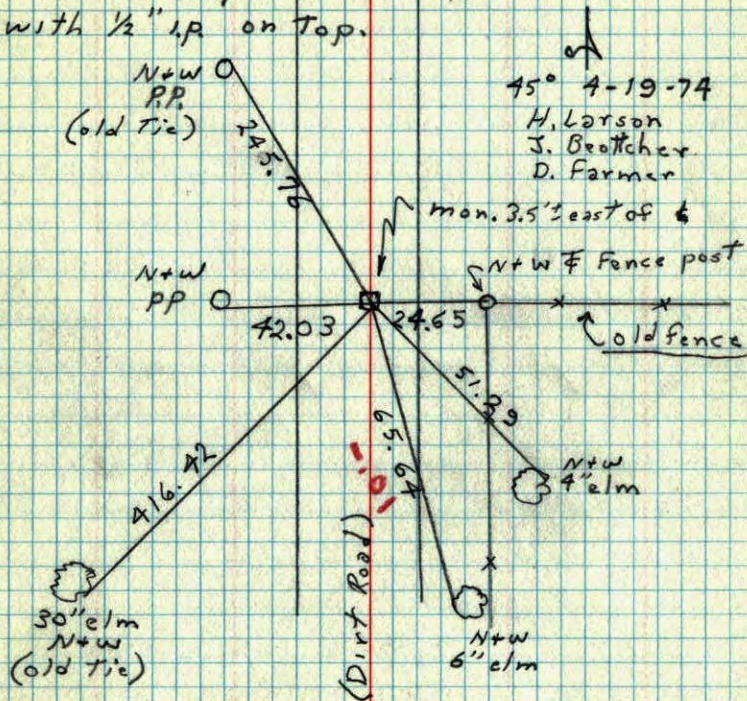
NW Cor. Sec. 6 T33 R25

Retied 6"x6" cast iron monument,
Type used by Sherburne Co. mon.
down 1.5'± with 1/2" i.p. on top.



NW Cor. Sec. 6 T33R25

Took new ties to 6"x6" cast iron monument. Type used by Sherburne Co. as Township corners mon. down 1.5'± with 1/2" I.P. on top.



45° 4-19-74

H. Larson
J. Beottcher
D. Farmer

Mon. 3.5' east of 6

N+W P.P.

42.03

24.65

N+W F Fence post

Old fence

51.39

N+W 4" elm

416.42

30" elm N+W (old Tie)

(Dirt Road)

65.6

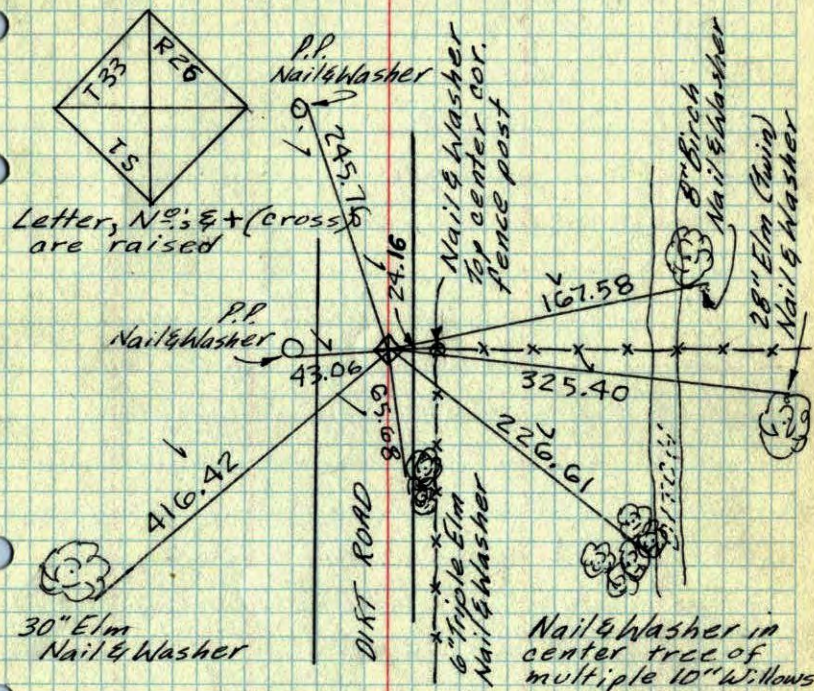
N+W 6" elm

N.W. Cor. Sec. 6-33-25

Found 6"x6" Cast Iron Monument

Monument is type used for Sherburne county township corners.

Monument is down 16" with 1/2" I.P. over top & flush with road surface



Letter, N^os & + (cross) are raised



P.P. Nail & Washer

P.P. Nail & Washer

Nail & Washer Top center cor. fence post

B-B Birch Nail & Washer

28" Elm (twice) Nail & Washer

P.P. Nail & Washer

43.06

24.16

167.58

80.50

325.40

226.61

30" Elm Nail & Washer

DIRT ROAD

6" Triple Elm Nail & Washer

Nail & Washer in center tree of multiple 10" Willows

April 9, 1963

J. Oliver
M.D. Anderson

TEMPERATURE CORRECTED
AND HORIZONTALLY
TAPED MEASUREMENTS

Tie check
Aug. 10, 1965

M.D. Anderson
J. Dunlap

Tie Check
July 8, 1969

R. Olson, B. Olson
ROLAND W. ANDERSON
COUNTY SURVEYOR
ANOKA COUNTY, MINNESOTA

N W Cor. Sec. 6, T 33, R 25

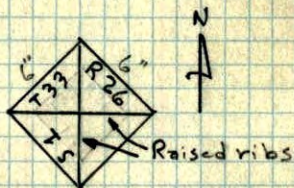
Found 6" Square Cast Iron Monument

down 16". - Set $\frac{3}{4}$ " I.P. Flush.

Monument is of Type used in Sherburne Co.
For Township Corners.

Monument is Approx. 30"

High and has Vertical
Ribs or vanes as shaft of



monuments.

N 9 Apr. 63

J. Oliver
M.D. Anderson

N4w's in
P.P.'s

Mon. is 5'± E. of
E. of Dirt Rd.

N4w in Top N4w in
Cor. F.P. 8" Birch
(leans S.W.)

