

# CERTIFICATE OF LOCATION OF GOVERNMENT CORNER

County of Anoka

State of Minnesota

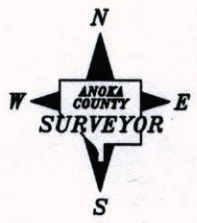
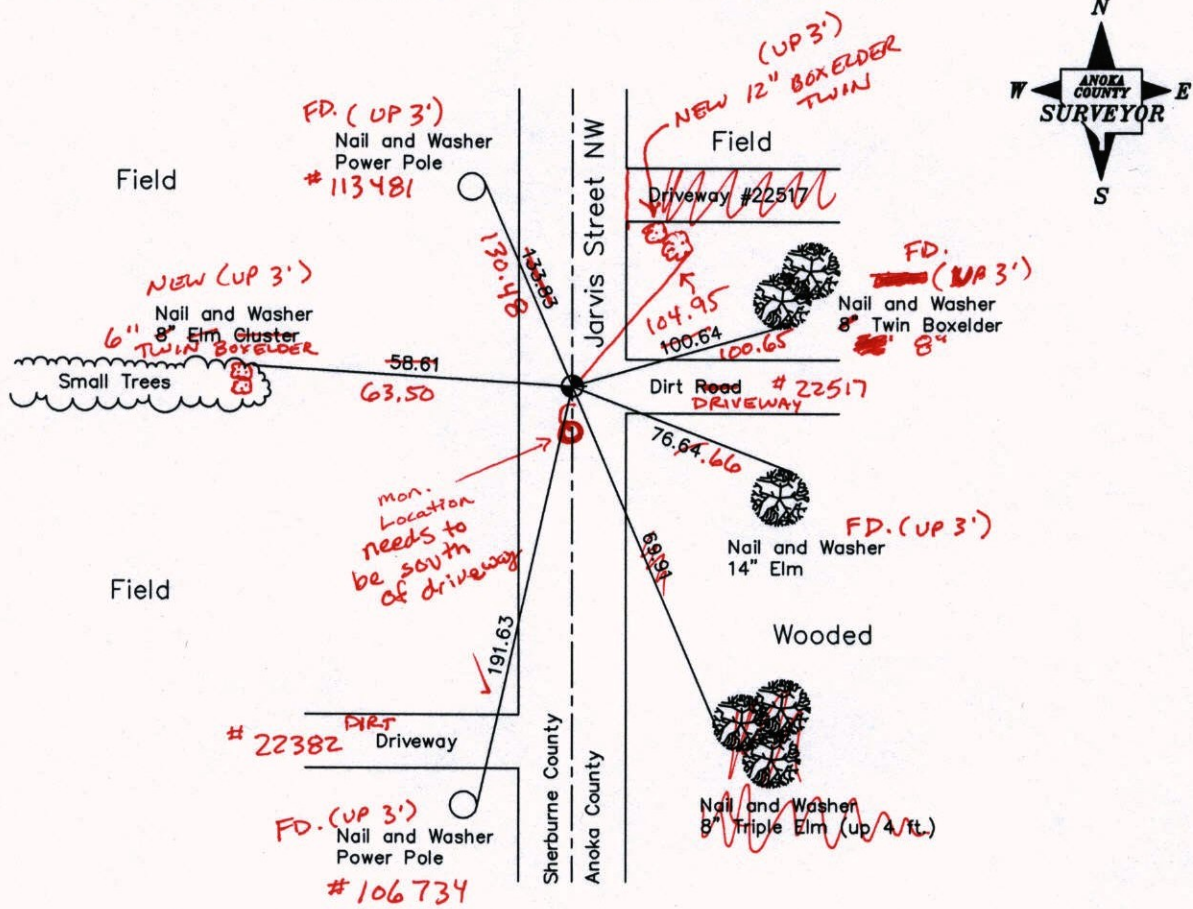
## West 1/4 Corner of Sec. 6, Township 33, Range 25

I hereby certify that on the 8th day of July, 1969, I found the described corner which was evidenced by cast iron monument set by Don Pepper on April 4, 1963

and I further certify that to perpetuate the location of said corner, I did, at the exact location thereof, place a permanent marker consisting of same: down 1 ft. ±, on centerline

(C.I.M. 2' ± E. of E)

which reference or witness monuments are located in the manner following:



11-15-13  
JS-SH-SS  
T/T-VRS  
Revised date

N.A.D. 1983 Coordinates  
(1996 Adjustment)

8-23-88
9-13-91
6-28-94
5-15-03 (raised)

County Project Coordinates		State Plane Coordinates	
Northing	225357.2482	Y	
Easting	437495.9854	X	

Date 2-6-03

VRS 3DQ = 0.06      N = 225357.2640      E = 437495.9122

# CERTIFICATE OF LOCATION OF GOVERNMENT CORNER

County of Anoka

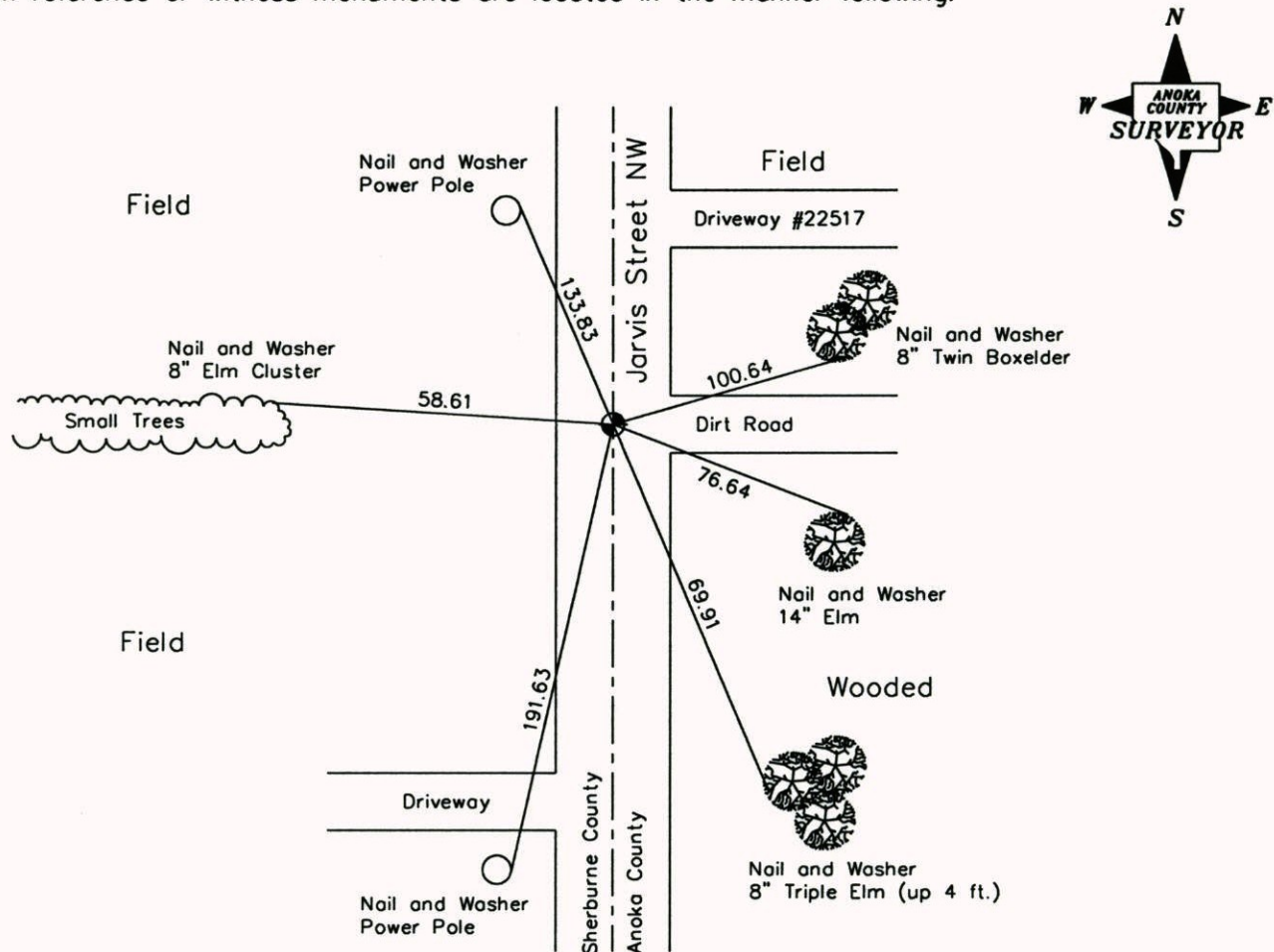
State of Minnesota

## West 1/4 Corner of Sec. 6, Township 33, Range 25

I hereby certify that on the 8th day of July, 1969, I found the described corner which was evidenced by cast iron monument set by Don Pepper on April 4, 1963

and I further certify that to perpetuate the location of said corner, I did, at the exact location thereof, place a permanent marker consisting of same: down 1 ft. ±, on centerline

which reference or witness monuments are located in the manner following:



Revised date

8-23-88
9-13-91
6-28-94
5-15-03 (raised)

N.A.D. 1983 Coordinates  
(1996 Adjustment)

County Project Coordinates	
Northing	225357.2482
Easting	437495.9854

State Plane Coordinates	
Y	_____
X	_____

Date 2-6-03

# CERTIFICATE OF LOCATION OF GOVERNMENT CORNER

County of Anoka

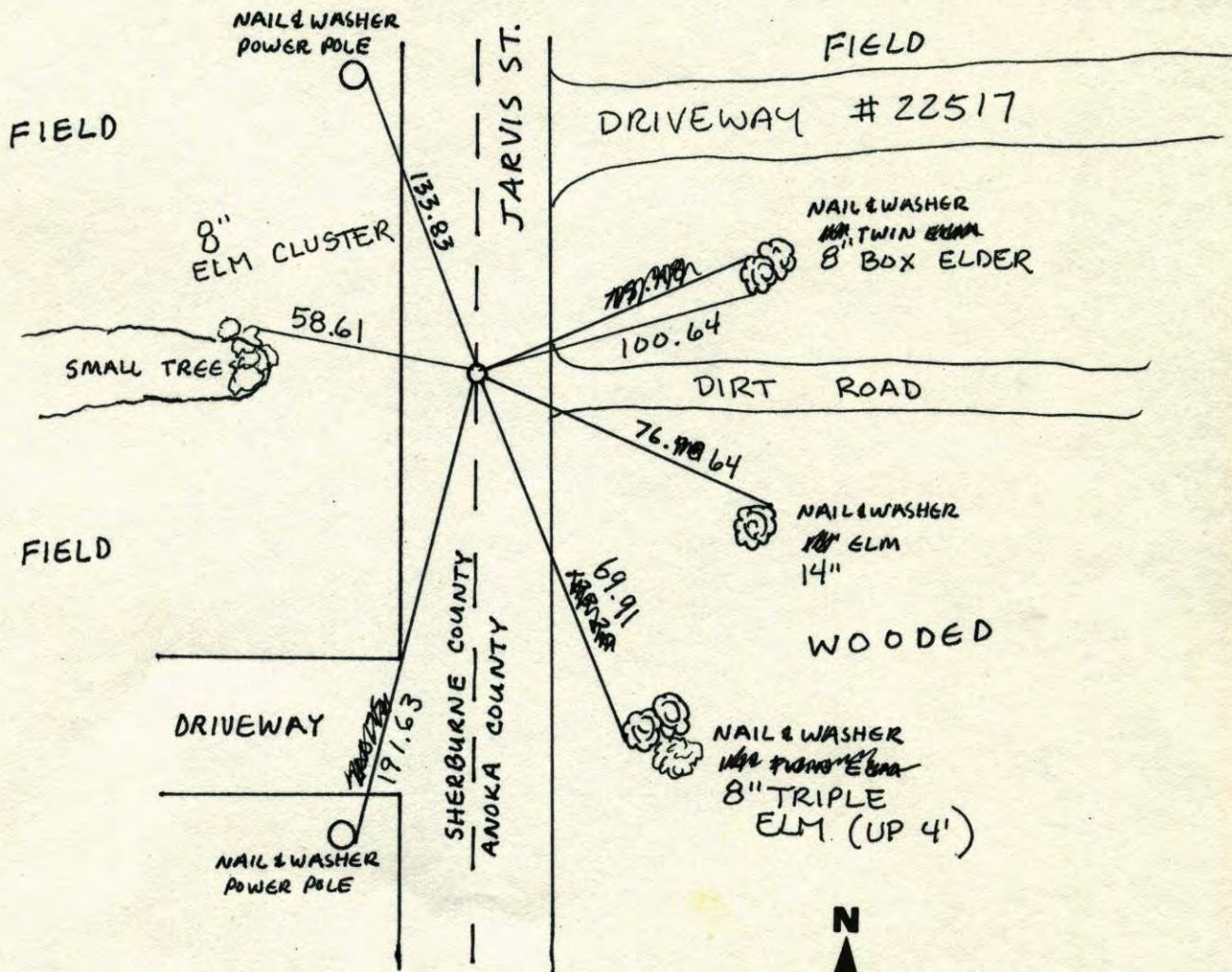
State of Minnesota

WEST 1/4 Corner of Sec. 6 Township 33 Range 25

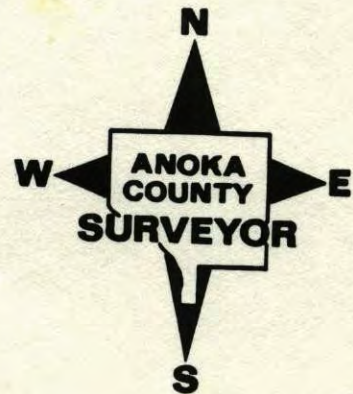
I hereby certify that on the 8<sup>TH</sup> day of JULY, 1969, I found the described corner which was evidenced by CAST IRON MONUMENT SET BY DON PEPPER ON APRIL 4, 1963

and I further certify that to perpetuate the location of said corner, I did, at the exact location thereof, place a permanent marker consisting of SAME; DOWN 1'± ON E

which reference or witness monuments are located in the manner following:

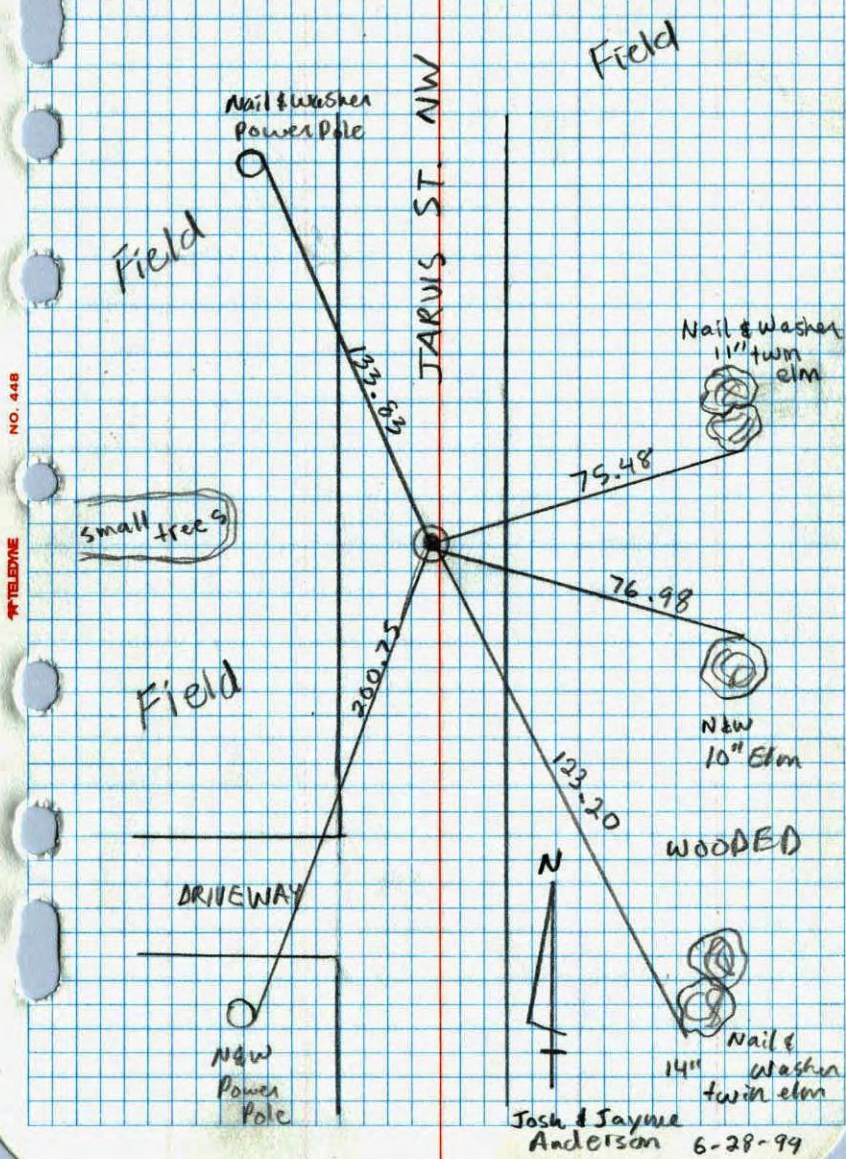


Revised date	Revised date	Revised date
8-23-88		
9-13-91		
6-28-94		
5-15-03	RAISED	



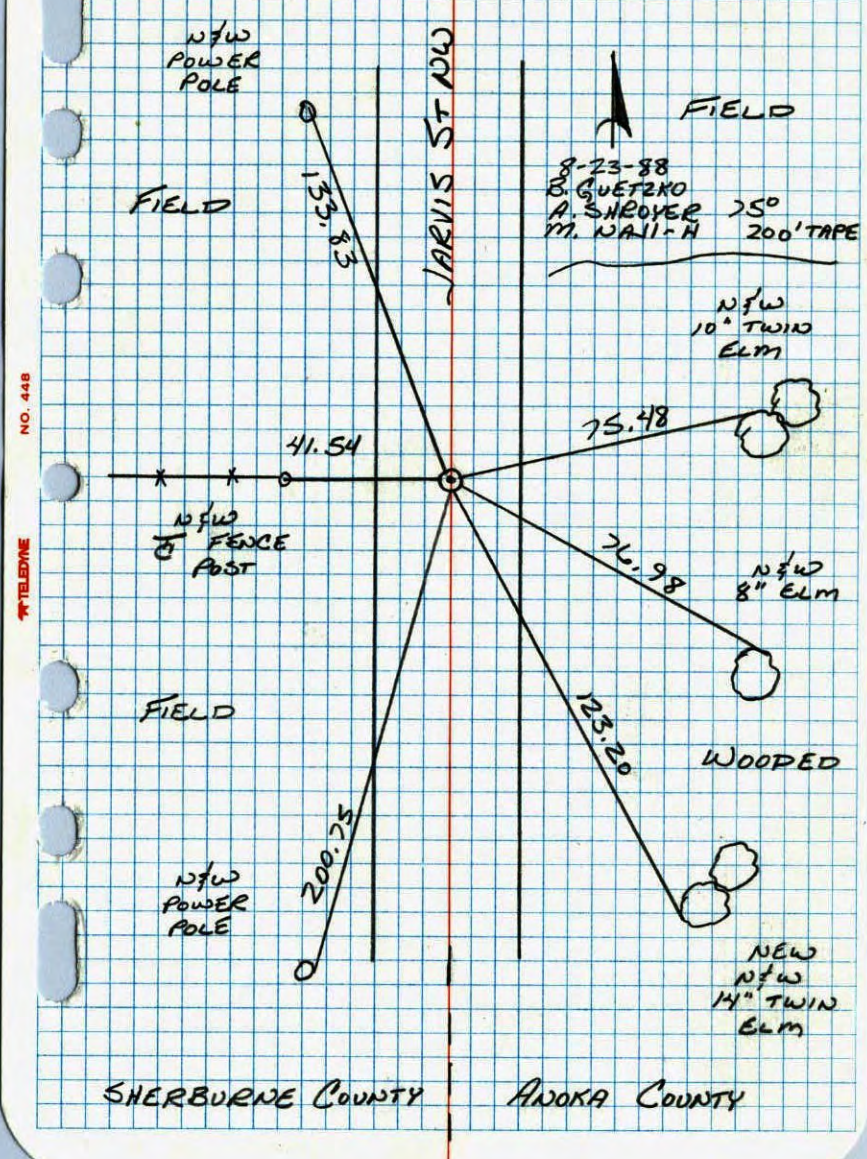
West 1/4 Sec. 6 T. 33 R. 25

Retie CAST IRON MONUMENT



WEST 1/4 CORNER SEC 6 T33 R25

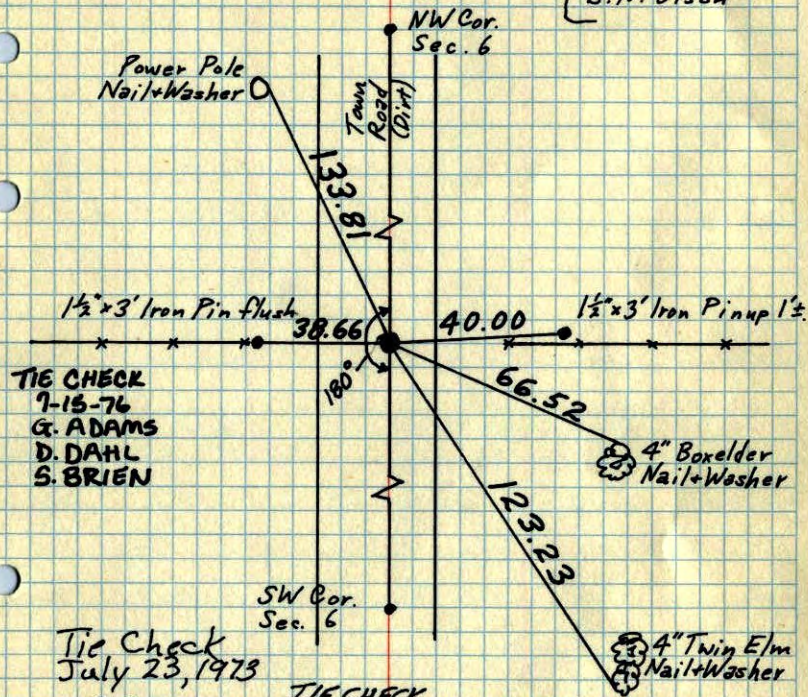
RETIED CAST IRON MONUMENT



# W 1/4 Cor. Sec. 6 - T33-R25

Found Cast Iron Monument 2.5'± East of centerline down 0.4'±

Monument set by Donn Pepper - 1963. April 14, July 8 1969  
R. A. Olson  
B. N. Olson



TIE CHECK  
7-15-76  
G. ADAMS  
D. DAHL  
S. BRIEN

Tie Check  
July 23, 1973

B. OLSON	TIE CHECK
D. BRIEN	7-10-79
D. FARMER	B. STEPHENS
	D. STEPHENS
	P. ROSS

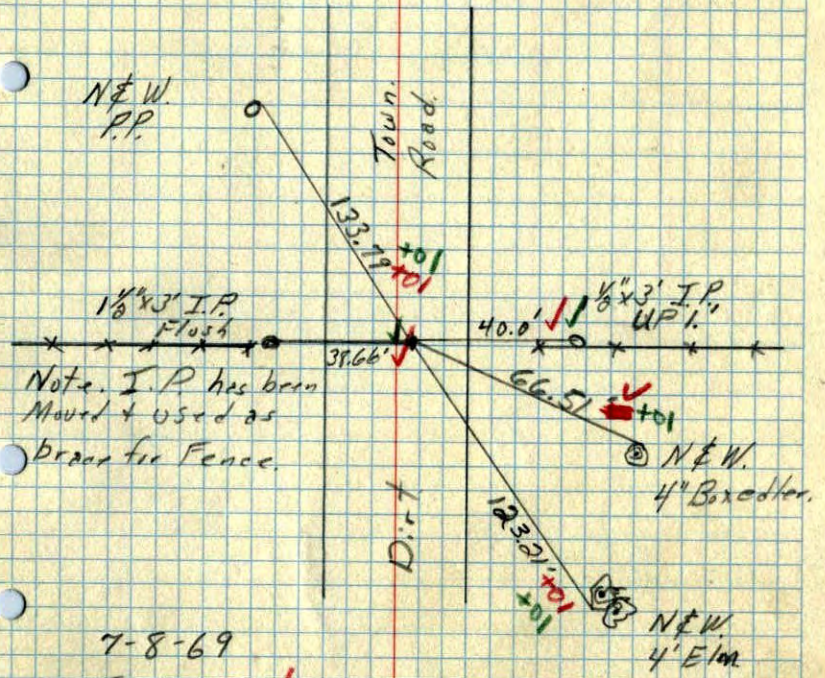
TIE CHECK  
7-26-82  
P. ROSS  
P. HORNBY  
M. LICK

TEMPERATURE CORRECTED AND HORIZONTALLY TAPED MEASUREMENTS

ROLAND W. ANDERSON  
COUNTY SURVEYOR  
ANOKA COUNTY, MINNESOTA

# W 1/4 Cor. Sec 6, T.33, R.25

Found C.I. 2.5'± East of C/L of Road Down .4'

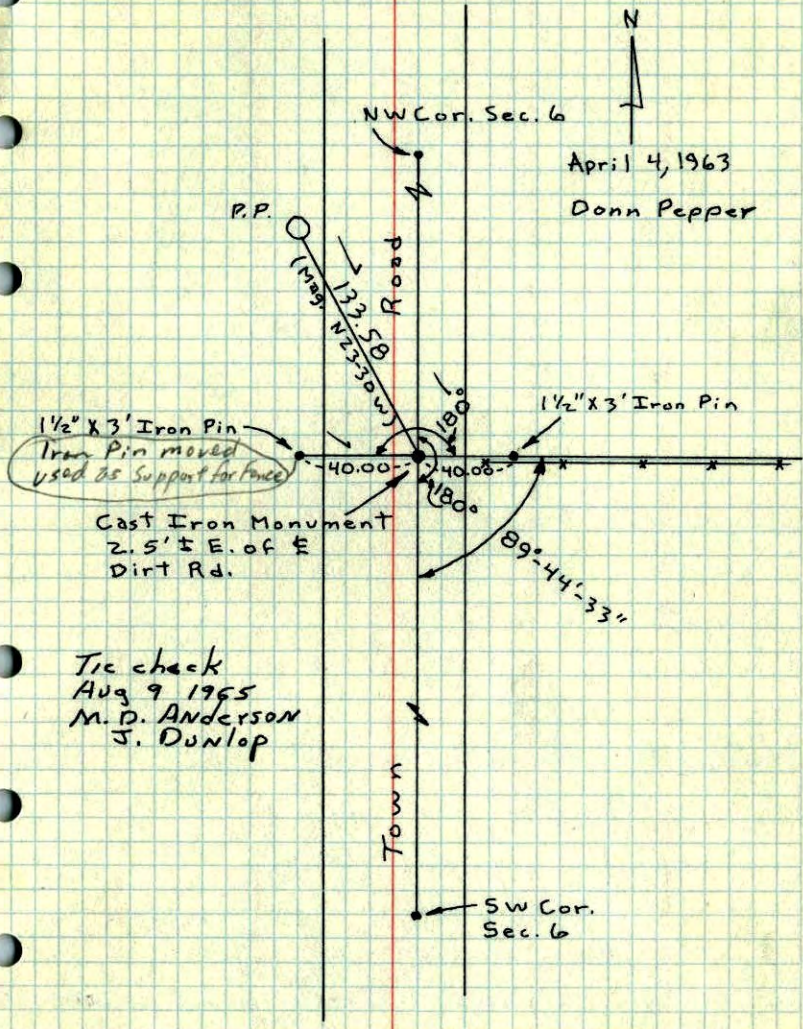


Note: I.P. has been Moved & used as brack for Fence.

7-8-69  
Temp 75.0  
Tape #5  
R.A. Olson  
B.N. Olson

W 1/4 Cor. Sec. 6, T33, R25

Cast Iron Monument set by Donn Pepper.

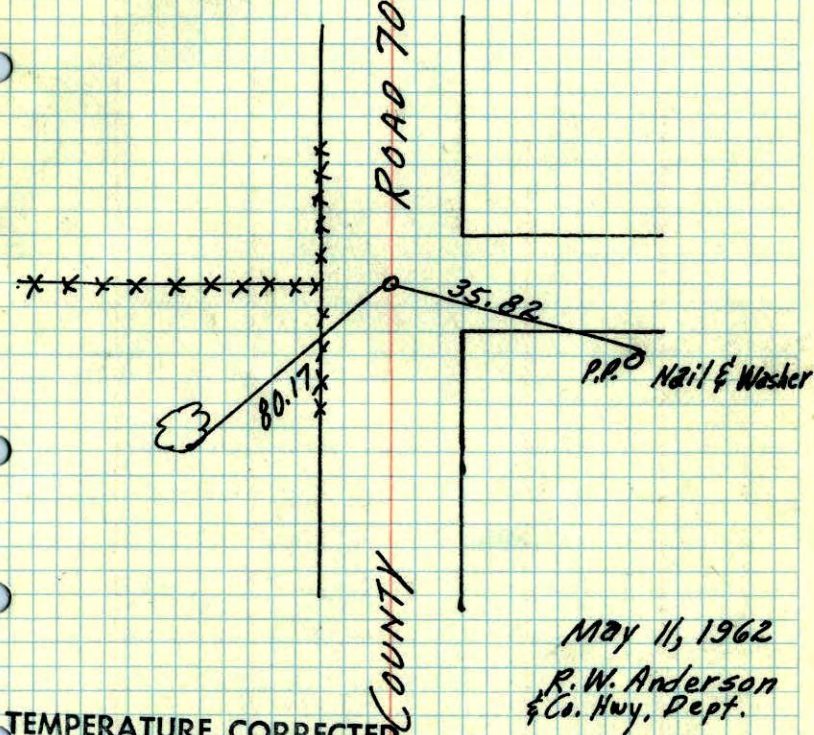


April 4, 1963  
Donn Pepper

Tie check  
Aug 9 1965  
M. D. Anderson  
J. Dunlop

Temporary W 1/4 Corner Sec. 5,  
T33, R25

Found remains of an old rotted  
post, down 1 1/2' in middle of County  
Road North & South and on fence line to West.  
Set 1/2" Iron Pipe down 1 1/2'



May 11, 1962  
R. W. Anderson  
& Co. Hwy. Dept.

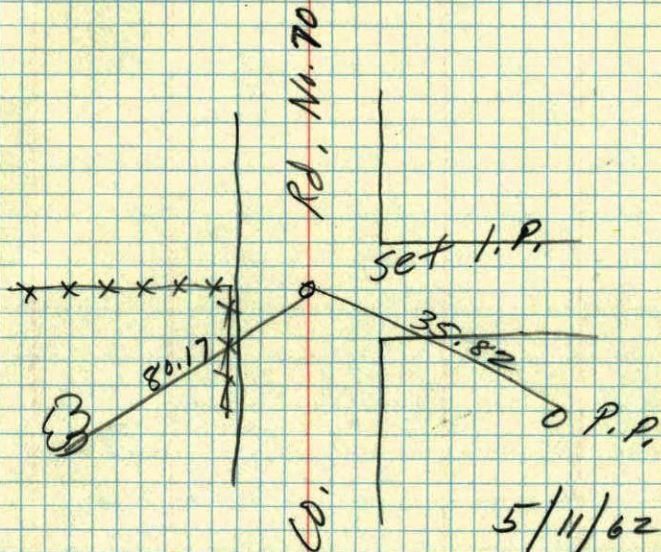
TEMPERATURE CORRECTED  
AND HORIZONTALLY  
TAPED MEASUREMENTS

ROLAND W. ANDERSON  
COUNTY SURVEYOR  
ANOKA COUNTY, MINNESOTA

Temp W<sup>1</sup>/<sub>4</sub> Corn. Sec. 5

T33, R25

Found remains of old potted  
post down 1 1/2'



5/11/62

R. W. Anderson

Co. Hwy. Dept.

55°-60°