

CERTIFICATE OF LOCATION OF GOVERNMENT CORNER

County of Anoka

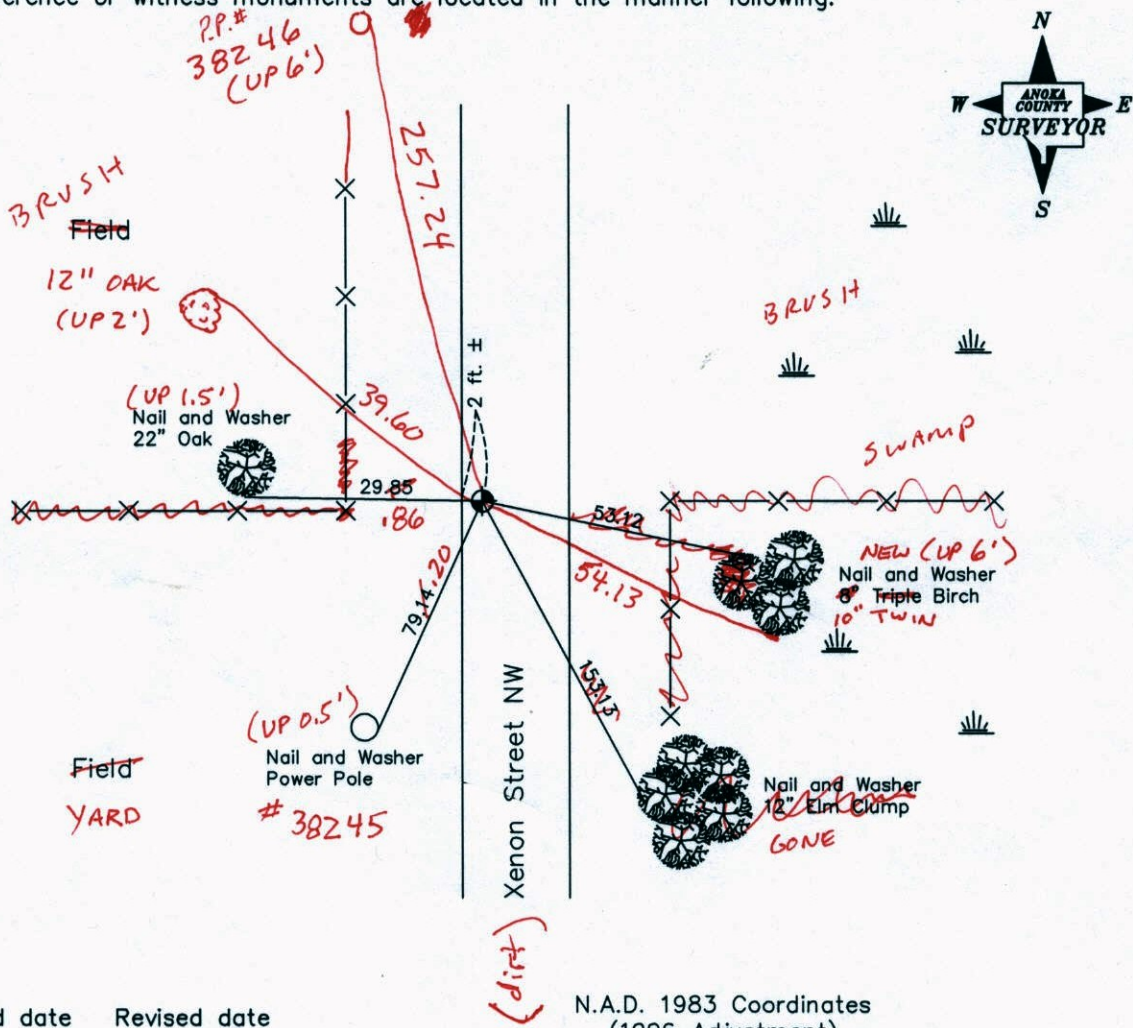
State of Minnesota

West 1/4 Corner of Sec. 2, Township 33, Range 25

I hereby certify that on the 22nd day of January, 1965, I found the described corner which was evidenced by Area Resurvey

and I further certify that to perpetuate the location of said corner, I did, at the exact location thereof, place a permanent marker consisting of a cast iron monument (down 0.5' ±)

which reference or witness monuments are located in the manner following:



10-17-13
BK-SS
TH-VRS

Revised date Revised date

7-9-79	9-19-02
7-26-82	
7-2-85	
8-31-88	
6-30-94	

County Project Coordinates	
Northing	225134.6778
Easting	458144.2462

State Plane Coordinates	
Y	_____
X	_____

Date 9-19-02

VRS 3DQ = 0.04 N = 225134.6774 E = 458144.2807

CERTIFICATE OF LOCATION OF GOVERNMENT CORNER

County of Anoka

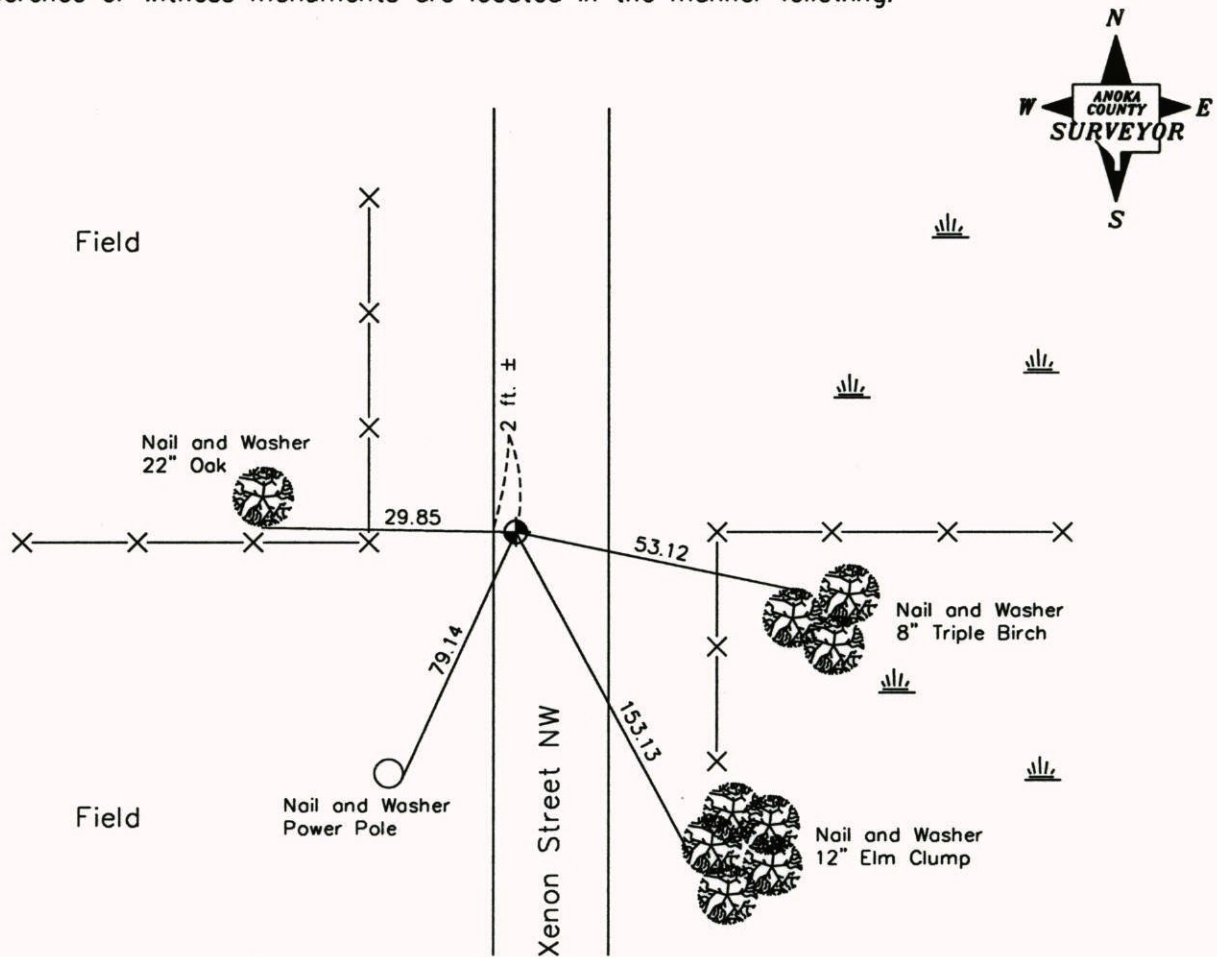
State of Minnesota

West 1/4 Corner of Sec. 2, Township 33, Range 25

I hereby certify that on the 22nd day of January, 1965, I found the described corner which was evidenced by Area Resurvey

and I further certify that to perpetuate the location of said corner, I did, at the exact location thereof, place a permanent marker consisting of a cast iron monument

which reference or witness monuments are located in the manner following:



Revised date Revised date

N.A.D. 1983 Coordinates
(1996 Adjustment)

7-9-79	9-19-02
7-26-82	
7-2-85	
8-31-88	
6-30-94	

County Project Coordinates	
Northing	225134.6778
Easting	458144.2462

State Plane Coordinates	
Y	
X	

Date 9-19-02

CERTIFICATE OF LOCATION OF GOVERNMENT CORNER

County of Anoka

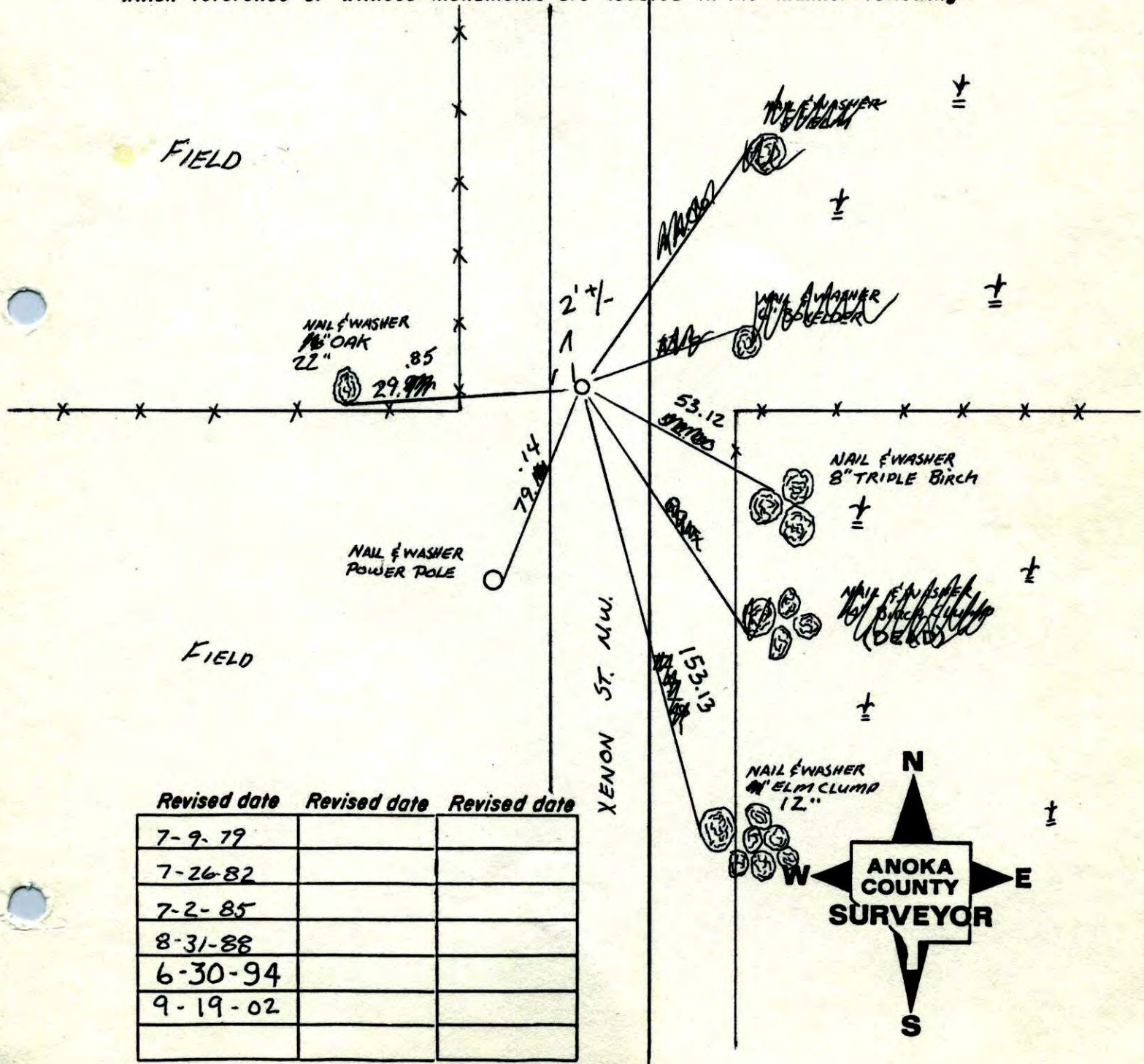
State of Minnesota

WEST 1/4 Corner of Sec. 2 Township 33 Range 25

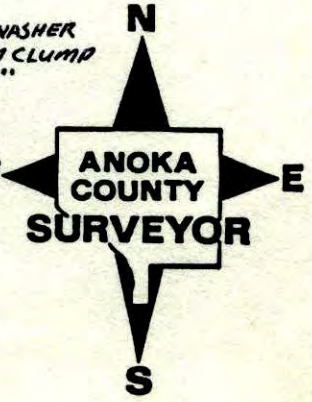
I hereby certify that on the 22nd day of JANUARY, 1965, I found the described corner which was evidenced by AREA RESURVEY

and I further certify that to perpetuate the location of said corner, I did, at the exact location thereof, place a permanent marker consisting of CAST IRON MONUMENT

which reference or witness monuments are located in the manner following:

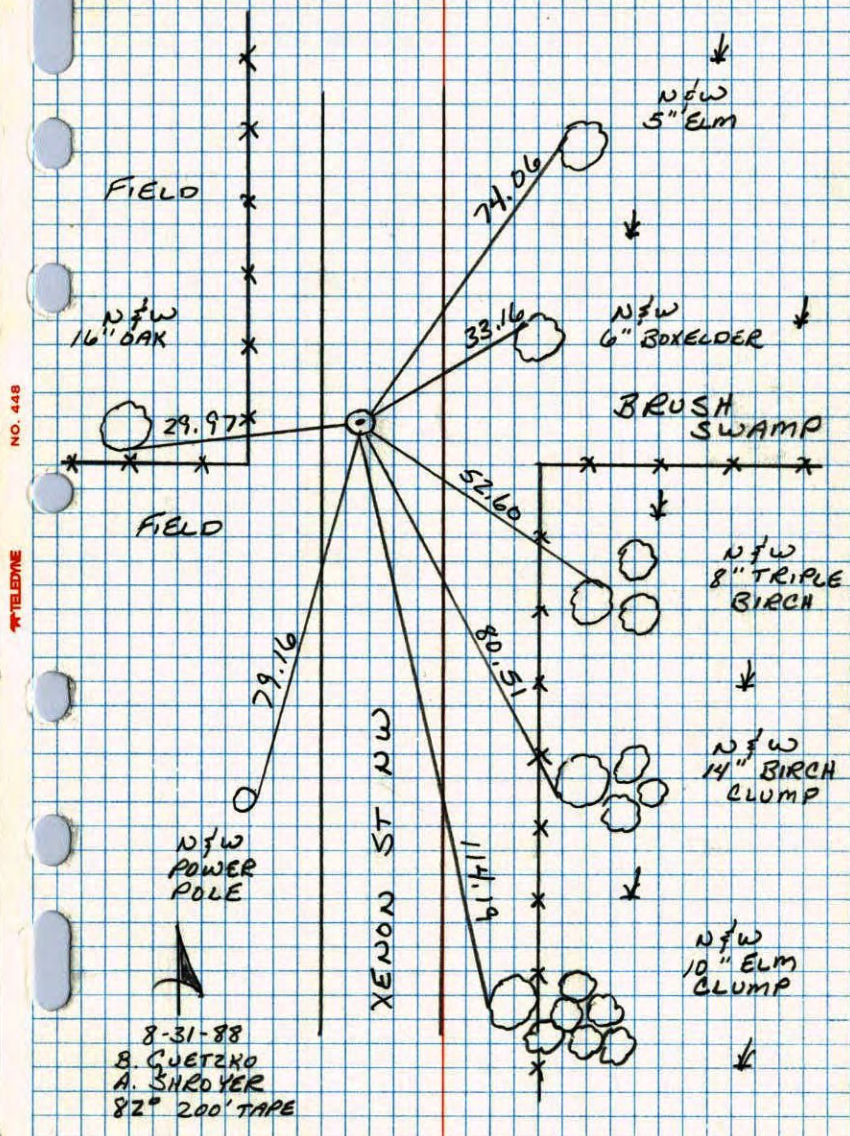


Revised date	Revised date	Revised date
7-9-79		
7-26-82		
7-2-85		
8-31-88		
6-30-94		
9-19-02		



W 1/4 CORNER SEC 2 T33 R25

RETIRED CAST IRON MONUMENT.



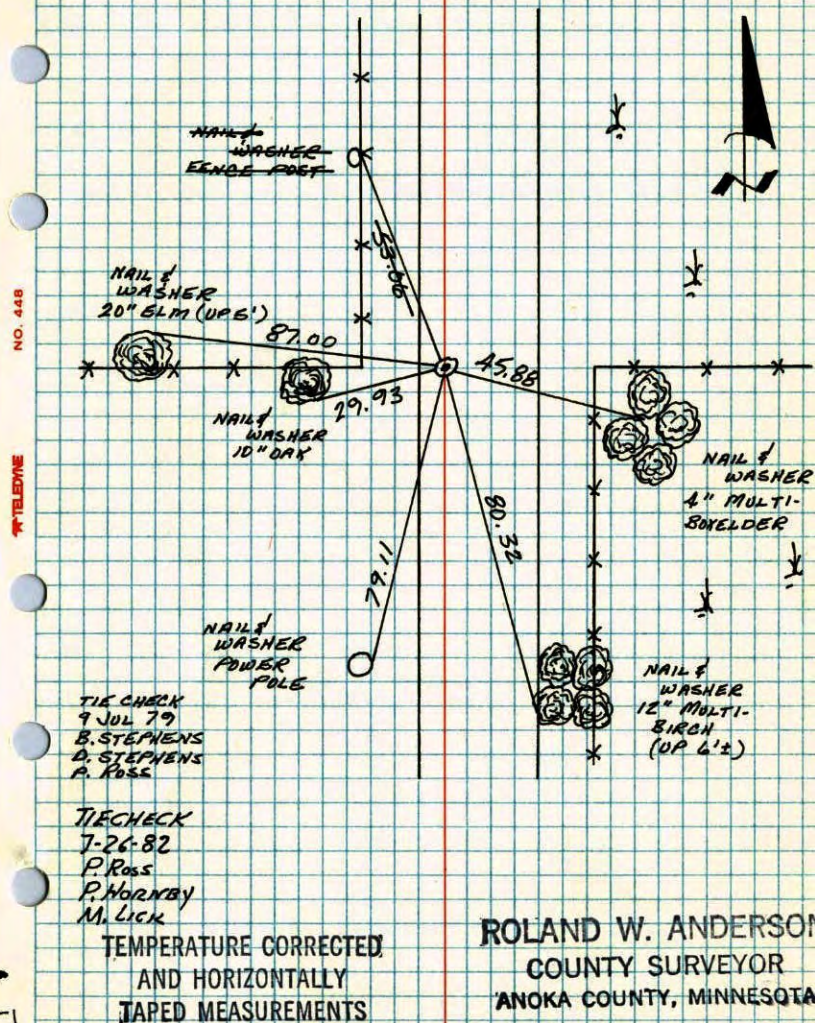
W 1/4 CORNER SECTION 2 - T33 - R25

SET CAST IRON MONUMENT FROM AREA RESURVEY.
CAST IRON DOWN 0.3'±.

22 JAN 65

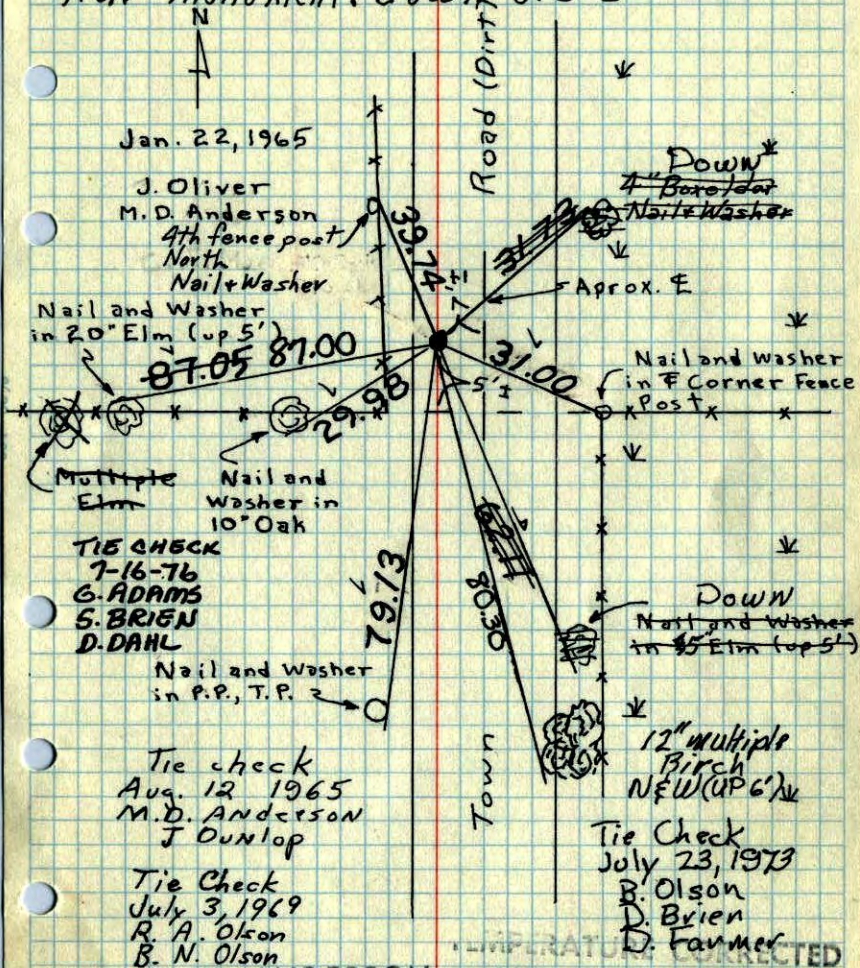
J. OLIVER

M. D. ANDERSON



W 1/4 Cor. Sec. 2, T33, R25

Set PK Spk. from Resurvey. Will set Cast Iron Monument after spring thaw. Placed cast iron monument down 0.3' ±



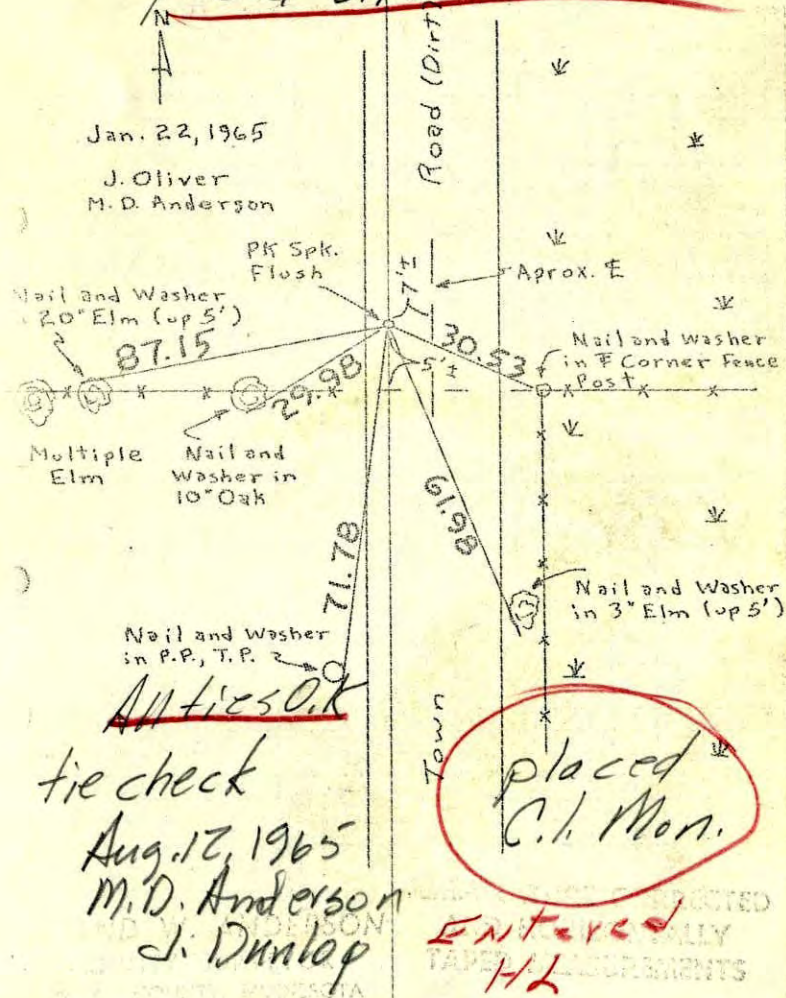
ROLAND W. ANDERSON
COUNTY SURVEYOR
ANOKA COUNTY, MINNESOTA

TEMPERATURE CORRECTED
AND HORIZONTALLY
TAPED MEASUREMENTS

W 1/4 Cor. Sec. 2, T33, R25

Set PK Spk. from Resurvey. Will set Cast Iron Monument after spring thaw.

placed C.I. Mon. down 0.3' ±



All ties O.K.
tie check
Aug. 12, 1965
M.D. Anderson
J. Dunlop

ENTERED
H.L.

W 1/4 Cor. Sec. 2, T33, R25

Set PK Spk. from Resurvey. Will set

Cast Iron Monument after ground thaws.

N
Jan. 22, 1965
26° ± 5
J. Oliver
M.D. Anderson

