

# CERTIFICATE OF LOCATION OF GOVERNMENT CORNER

County of Anoka

State of Minnesota

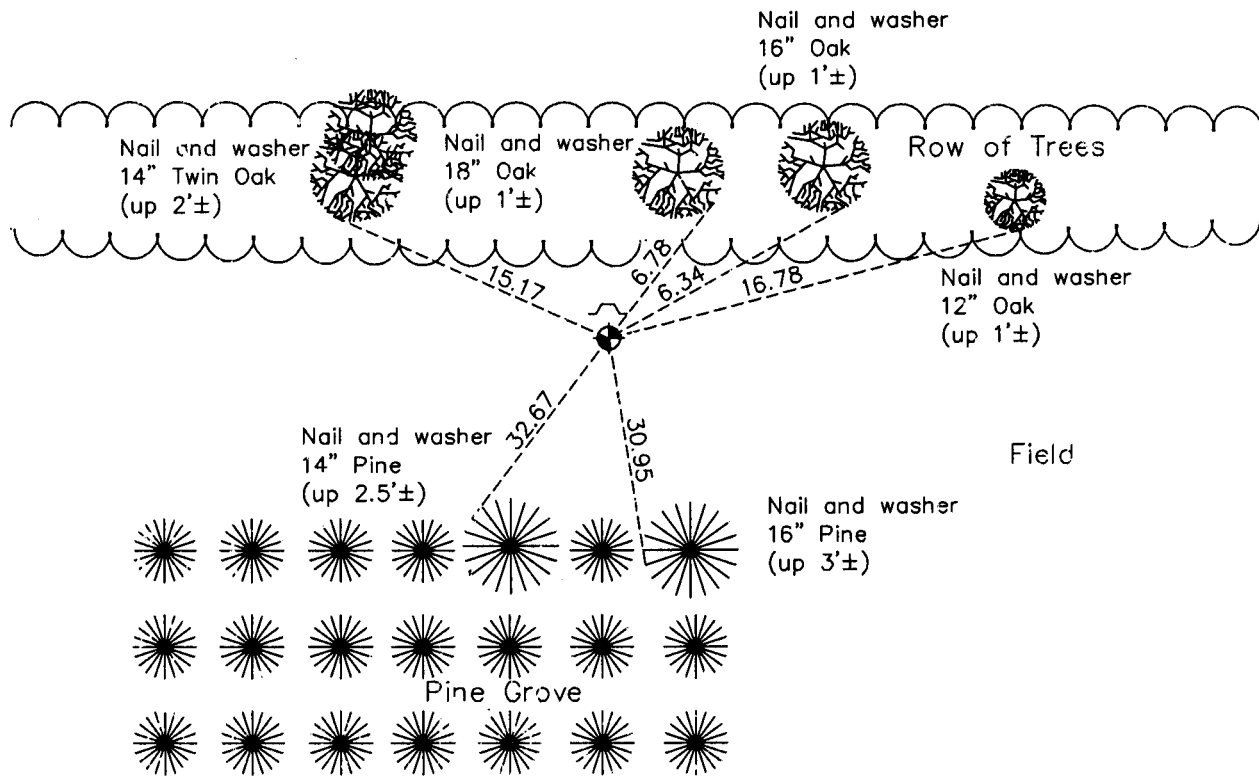
## North 1/4 Corner of Sec. 1 Township 33 Range 25

On the 1st day of May, 1975, the described corner was evidenced by area resurvey

and to perpetuate the location of said corner, at the exact location thereof, a permanent marker was placed consisting of a cast iron monument with a sign and post on the north side

AND on the 18th day of March, 2013, said permanent marker was found down 0.2'± and the ties were updated

Updated reference ties are as shown below.



N  
  
 ANOKA COUNTY SURVEYOR  
 S  
 Revision Date  
12/19/13

N.A.D. 1983 Coordinates  
(1996 Adjustment)

County Project Coordinates	
Northing	<u>227482.7759</u>
Easting	<u>466051.5924</u>
Date	<u>1/17/01</u>

I hereby certify that this United States public land survey monument record is correct and complete to the best of my knowledge and belief.

*Larry D. Hoium* Date 12/19/13

Larry D. Hoium, Anoka County Surveyor  
 Minnesota License Number 18165

# CERTIFICATE OF LOCATION OF GOVERNMENT CORNER

County of Anoka

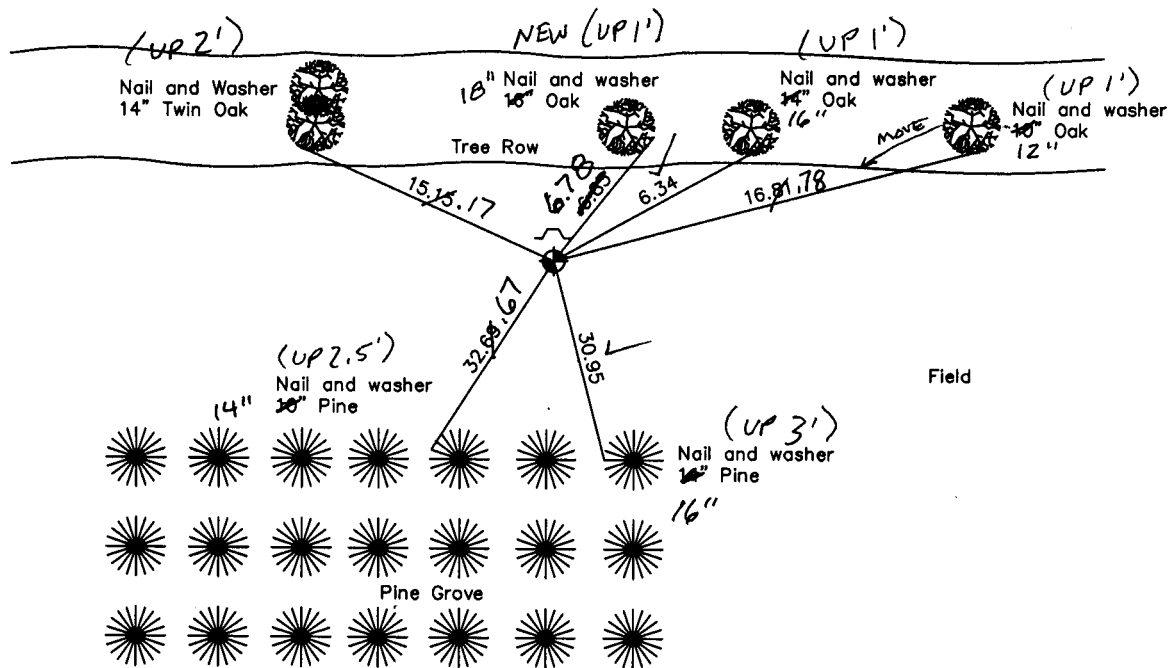
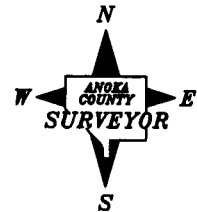
State of Minnesota

North 1/4 Corner of Sec. 1, Township 33, Range 25

I hereby certify that on the 1st day of May, 1975, I found the described corner which was evidenced by Area Resurvey

and I further certify that to perpetuate the location of said corner, I did, at the exact location thereof, place a permanent marker consisting of a cast iron monument with a sign and post on the north side (MON. DOWN 0.2'±)

which reference or witness monuments are located in the manner following:



3-18-13  
BK-55  
TAPED

Revised date	Revised date
7-13-76	7-11-94
7-18-79	10-8-02
8-5-82	
7-10-85	
6-21-89	

N.A.D. 1983 Coordinates  
(1996 Adjustment)

County Project Coordinates		State Plane Coordinates	
Northing	227482.7759	Y	_____
Easting	466051.5924	X	_____

Date 1-17-01

# CERTIFICATE OF LOCATION OF GOVERNMENT CORNER

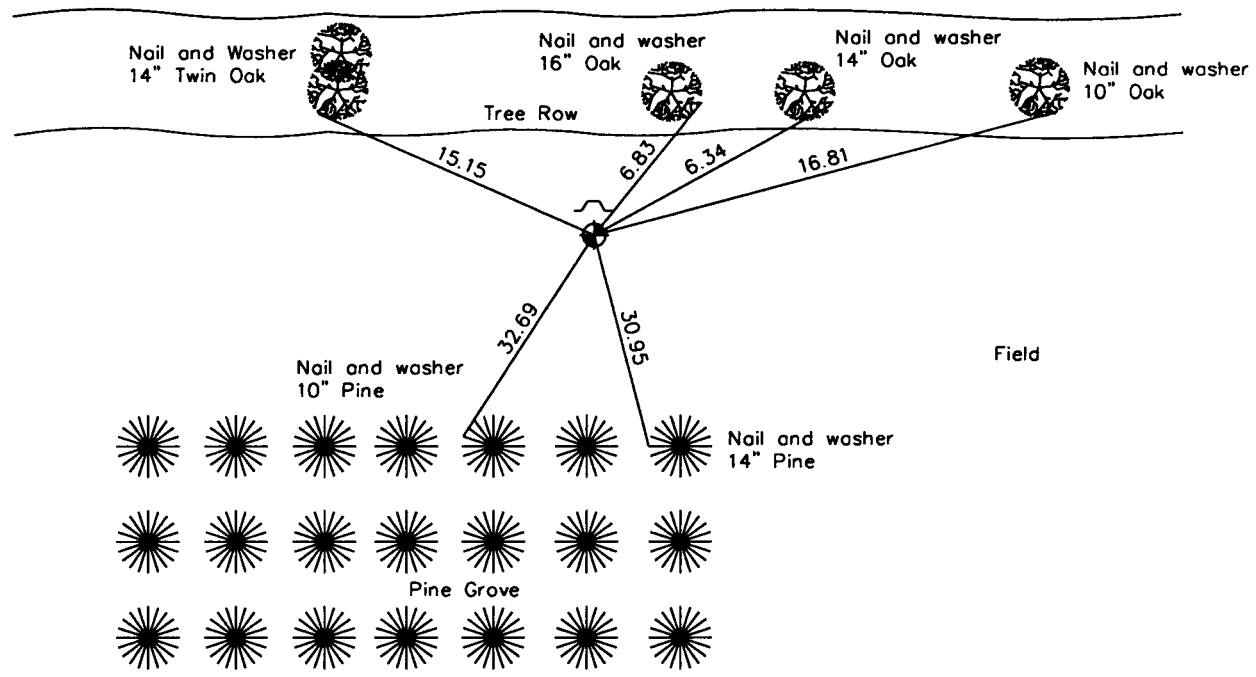
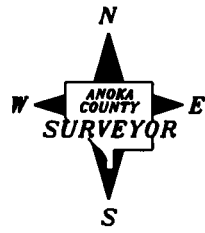
County of Anoka                      State of Minnesota

## North 1/4 Corner of Sec. 1, Township 33, Range 25

I hereby certify that on the 1st day of May, 1975, I found the described corner which was evidenced by Area Resurvey

and I further certify that to perpetuate the location of said corner, I did, at the exact location thereof, place a permanent marker consisting of a cast iron monument with a sign and post on the north side

which reference or witness monuments are located in the manner following:



Revised date	Revised date
7-13-76	7-11-94
7-18-79	10-8-02
8-5-82	
7-10-85	
6-21-89	

N.A.D. 1983 Coordinates  
(1996 Adjustment)

County Project Coordinates	State Plane Coordinates
Northing <u>227482.7759</u>	Y _____
Easting <u>466051.5924</u>	X _____

Date 1-17-01

# CERTIFICATE OF LOCATION OF GOVERNMENT CORNER

County of Anoka

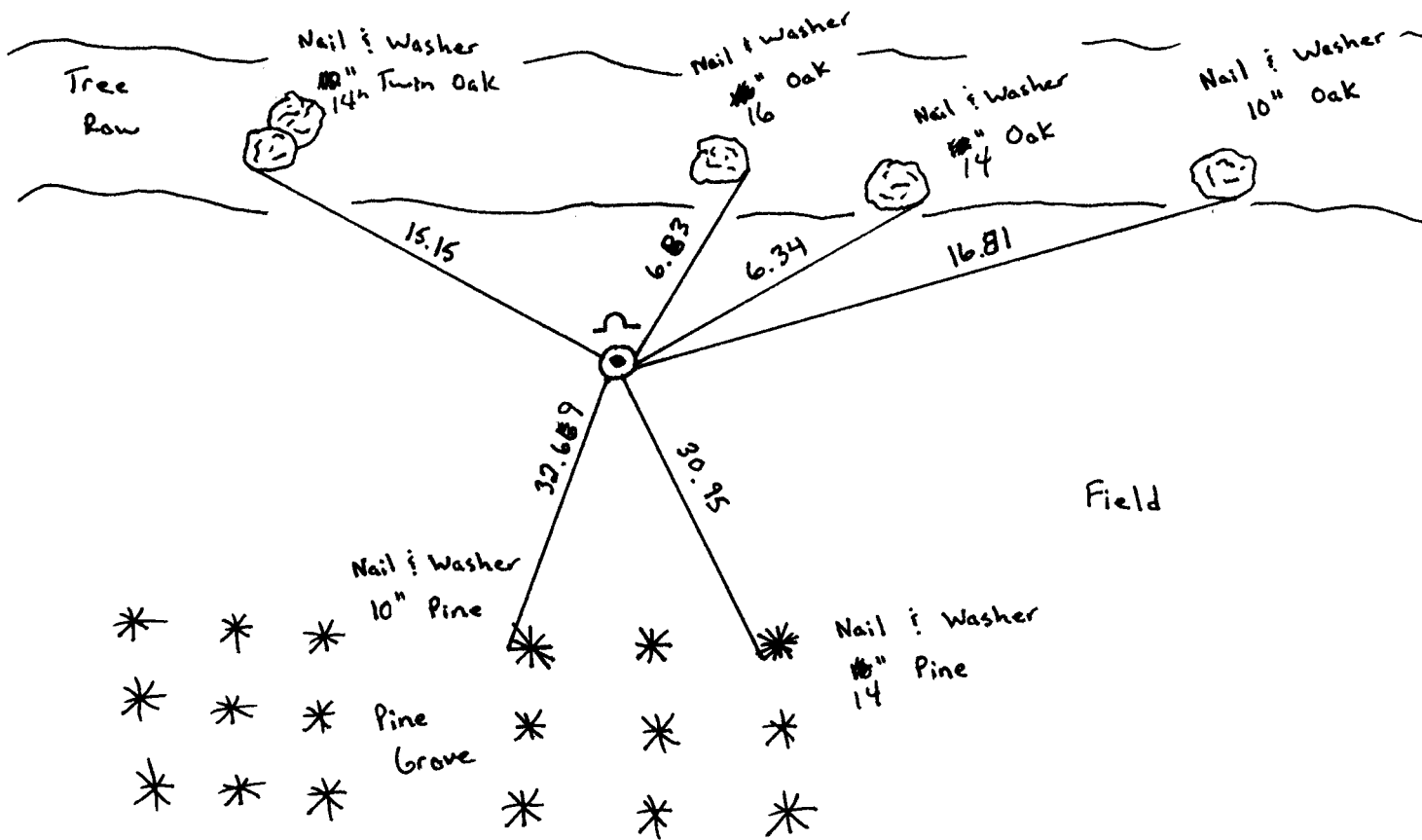
State of Minnesota

N 74 Corner of Sec. 1 Township 33 Range 25

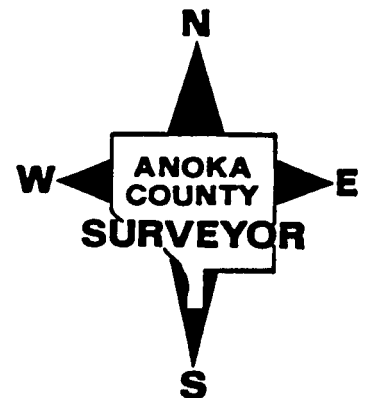
I hereby certify that on the 1 day of May, 1975, I found the described corner which was evidenced by Area Resurvey

and I further certify that to perpetuate the location of said corner, I did, at the exact location thereof, place a permanent marker consisting of Cast Iron Monument  
Sign and Post on North Side

which reference or witness monuments are located in the manner following:



Revised date	Revised date	Revised date
7-13-76		
7-18-79		
8-5-82		
7-10-85		
6-21-89		
7-11-94		
10-8-02		



# N<sup>1</sup>/<sub>4</sub> Cor. Sec. 1-T33-R25

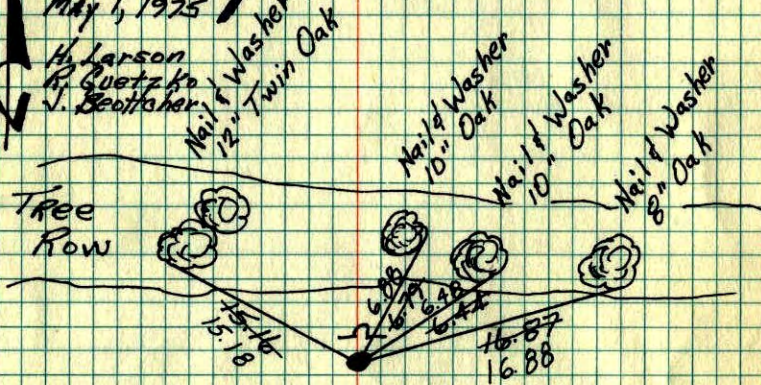
Set Cast Iron Monument From Area Resurvey. Placed Sign & Post On North Side.



May 1, 1975

H. Larson  
B. Gutzko  
J. Beottcher

## Open Field



*	*	*	*
*	*	*	*
*	*	*	*
*	*	*	*
*	*	*	*

## Pine Grove

## Open Field

TIE CHECK

7-13-76

G. ADAMS

D. DANL

S. BRIEN

TIE CHECK

7-18-79

B. STEPHENS

D. STEPHENS

P. ROSS

TAPE # 8

76° F.

TIE CHECK

8-5-82

P. ROSS

P. HORNBY

TEMPERATURE CORRECTED  
AND HORIZONTALLY  
TAPED MEASUREMENTS

ROLAND W. ANDERSON  
COUNTY SURVEYOR  
ANOKA COUNTY, MINNESOTA

# N<sup>1</sup>/<sub>4</sub> Cor. Sec. 1 T33 R25

Set cast iron monument from area resurvey. placed sign & post on N side



5-1-75

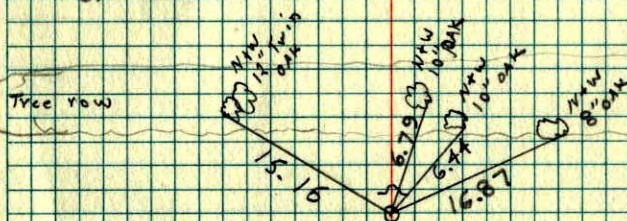
8:14 47°

H. Larson

B. Gutzko

J. Beottcher

## open Field



*	*	*	*
*	*	*	*
*	*	*	*
*	*	*	*
*	*	*	*

## Open Field