

# CERTIFICATE OF LOCATION OF GOVERNMENT CORNER

County of Anoka

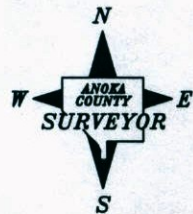
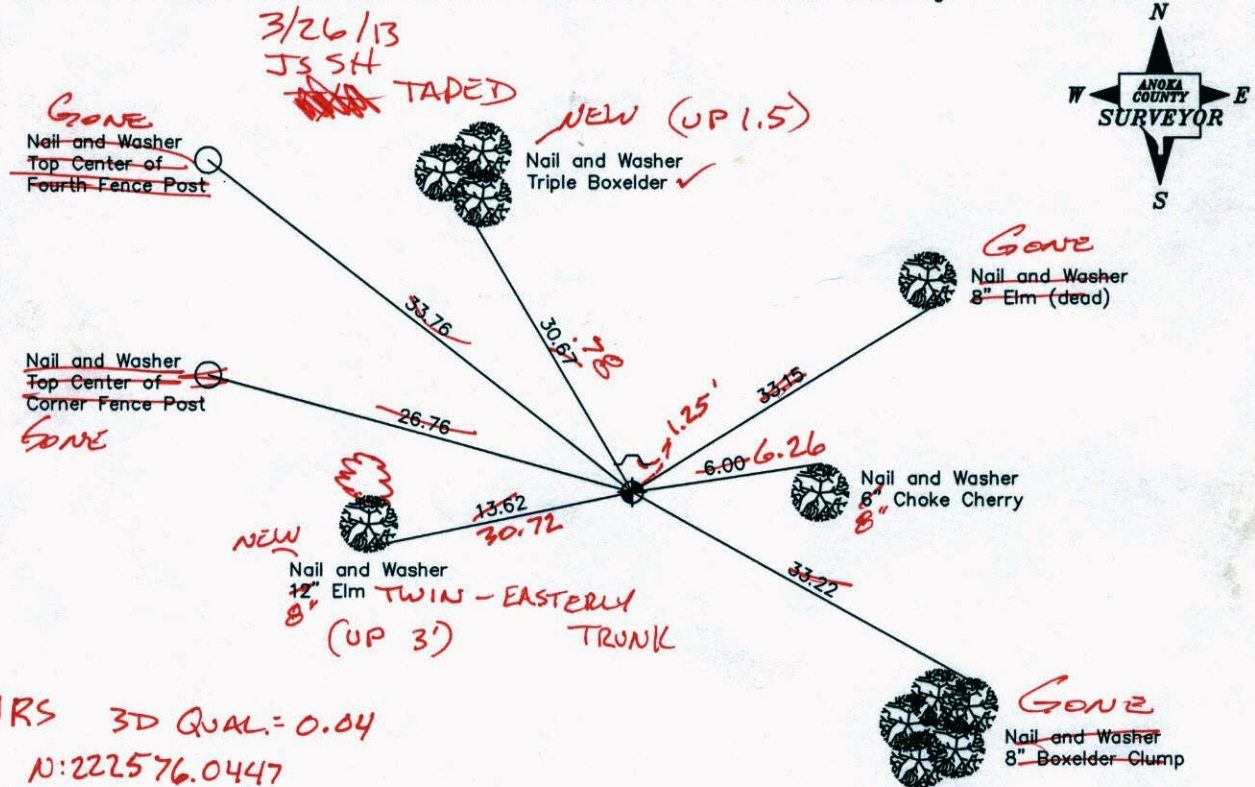
State of Minnesota

## South 1/4 Corner of Sec. 4, Township 33, Range 25

I hereby certify that on the 2nd day of December, 1974, I found the described corner which was evidenced by Area Resurvey

and I further certify that to perpetuate the location of said corner, I did, at the exact location thereof, place a permanent marker consisting of a cast iron monument with a sign and post on the north side *(FLUSH) (SIGN ABOUT 1.25' N. OF CIM.)*

which reference or witness monuments are located in the manner following:



*URS 3D QUAL = 0.04  
N: 222576.0447  
E: 450257.0602*

Revised date

7-17-79
6-14-89
7-5-94
7-29-02

N.A.D. 1983 Coordinates  
(1996 Adjustment)

County Project Coordinates		State Plane Coordinates	
Northing	222576.0562	Y	_____
Easting	450257.0672	X	_____

Date 12-7-02

# CERTIFICATE OF LOCATION OF GOVERNMENT CORNER

County of Anoka

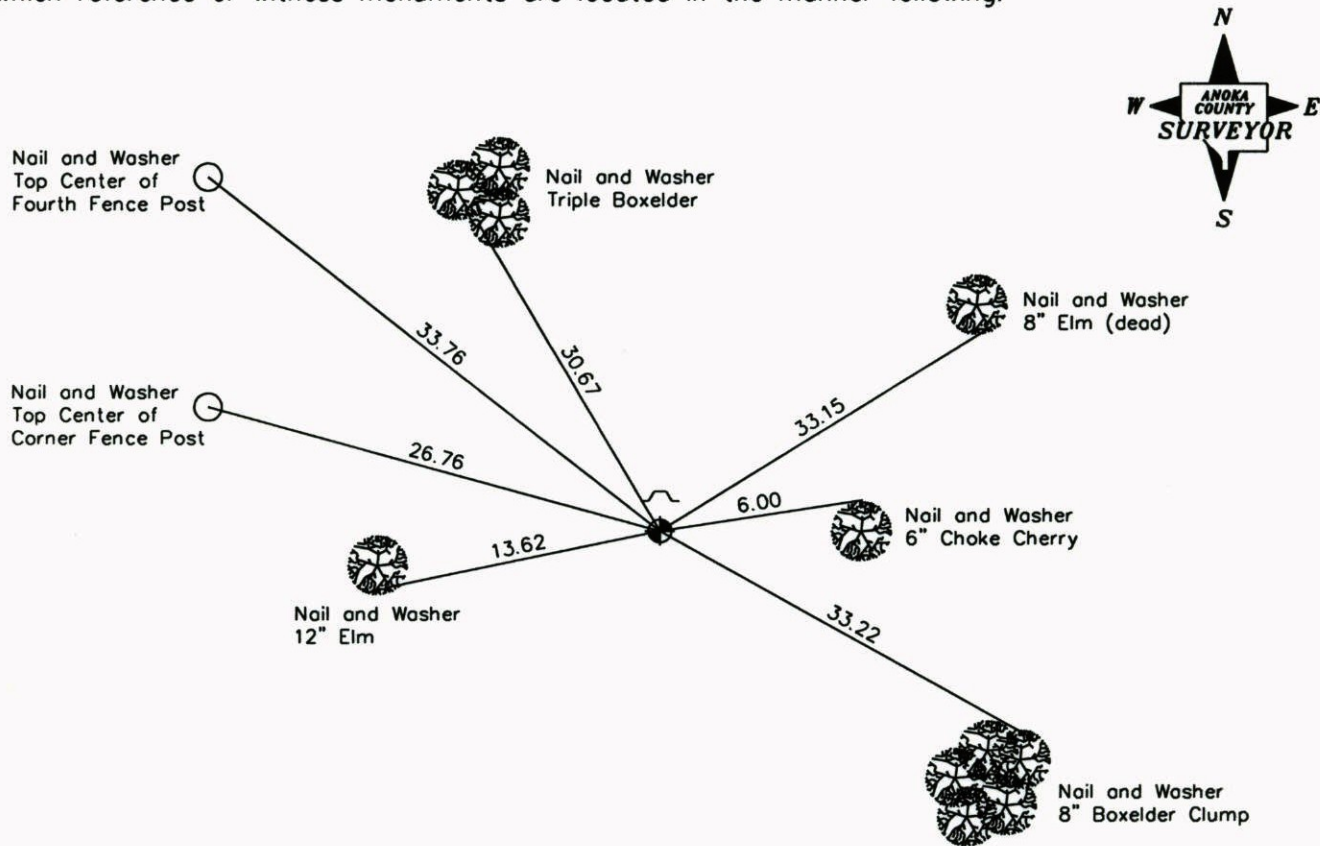
State of Minnesota

South 1/4 Corner of Sec. 4, Township 33, Range 25

I hereby certify that on the 2nd day of December, 1974, I found the described corner which was evidenced by Area Resurvey

and I further certify that to perpetuate the location of said corner, I did, at the exact location thereof, place a permanent marker consisting of a cast iron monument with a sign and post on the north side

which reference or witness monuments are located in the manner following:



Revised date

7-17-79
6-14-89
7-5-94
7-29-02

N.A.D. 1983 Coordinates  
(1996 Adjustment)

County Project Coordinates	State Plane Coordinates
Northing <u>222576.0562</u>	Y _____
Easting <u>450257.0672</u>	X _____

Date 12-7-02

# CERTIFICATE OF LOCATION OF GOVERNMENT CORNER

County of Anoka

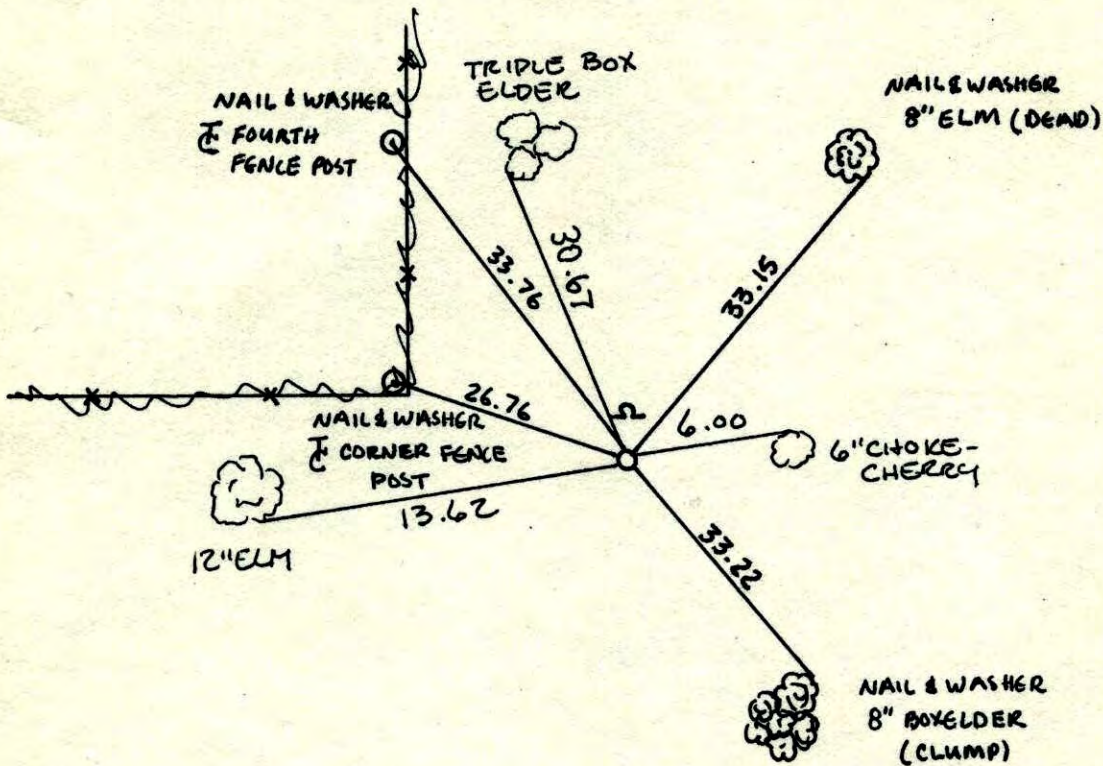
State of Minnesota

SOUTH 1/4 Corner of Sec. 4 Township 33 Range 25

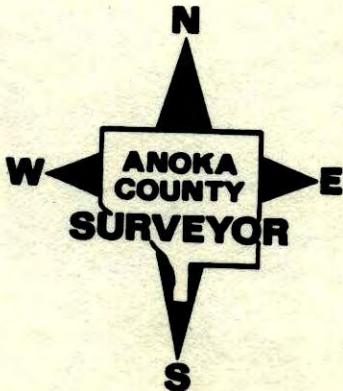
I hereby certify that on the 2 day of DEC., 19 74, I found the described corner which was evidenced by AREA RESURVEY

and I further certify that to perpetuate the location of said corner, I did, at the exact location thereof, place a permanent marker consisting of CAST IRON MONUMENT; SIGN AND POST  
ON NORTH SIDE

which reference or witness monuments are located in the manner following:

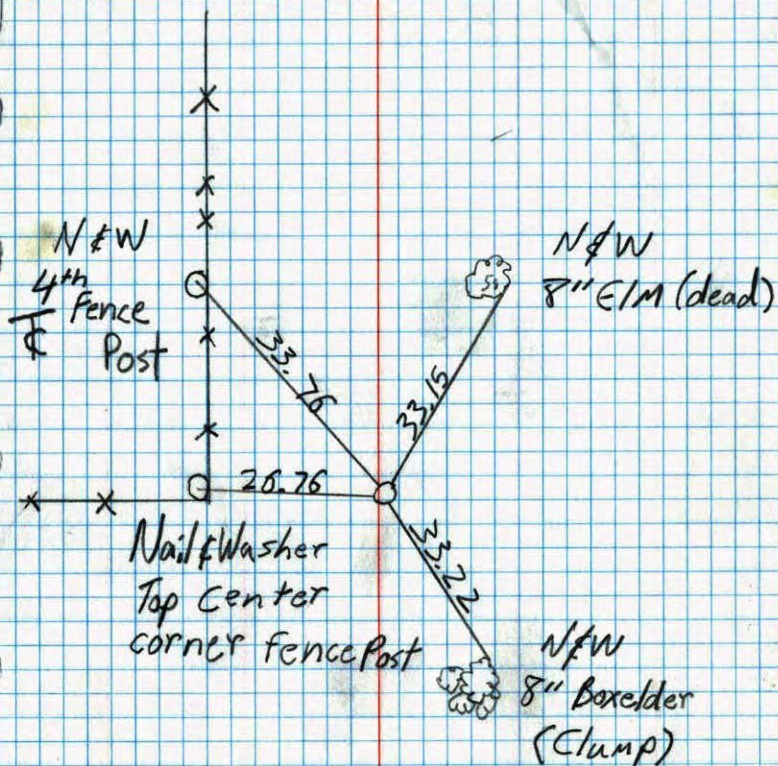


Revised date	Revised date	Revised date
7-17-79		
6-14-89		
7-5-94		
7-29-02		



5 1/4 Sec. 4 T. 33 R. 25 P. 27

retie cast Iron Mon.



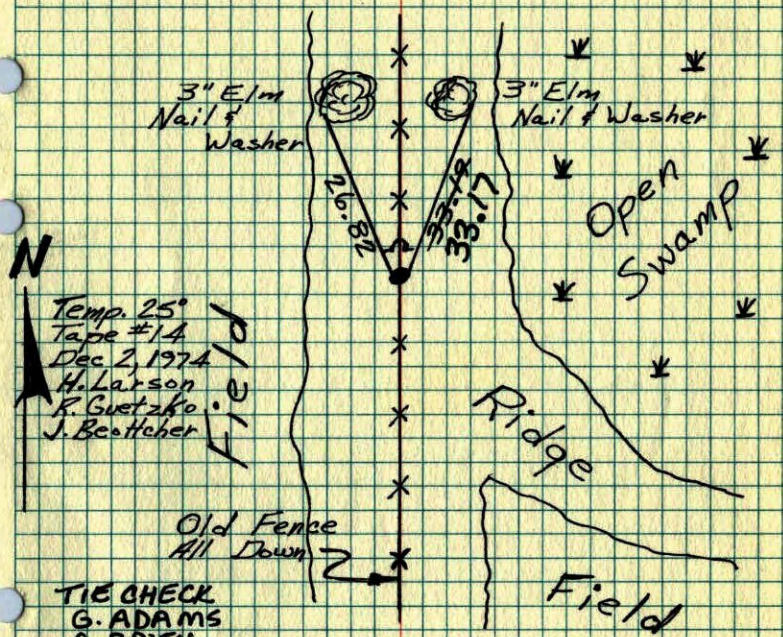
N&W  
8" Boxelder  
(Clump)

N  
7-5-94  
Jayme  
Josh  
Anderson

NO. 448  
TELEPHONE

5 1/4 Cor. Sec 4 - T33 - R25

Set Cast Iron Monument From Area  
Resurvey. Set Sign And Post On North  
Side.



N  
Temp. 25°  
Tape #14  
Dec. 2, 1974  
H. Larson  
K. Guetzko  
J. Beutcher

TIE CHECK  
G. ADAMS  
S. BRIEN  
D. DAHL  
7-16-76

TIE CHECK  
7-17-79  
B. STEPHENS  
D. STEPHENS  
D. ROSS

TIE CHECK  
8-4-82  
P. ROSS  
P. HORNBY

ROLAND W. ANDERSON COUNTY SURVEYOR ANOKA COUNTY, MINNESOTA  
TEMPERATURE CORRECTED AND HORIZONTALLY TAPED MEASUREMENTS

S 1/4 Cor. Sec. 4 T33 R25

Set cast iron monument from area  
resurvey. Set sign + post on North side.

25° #14  
12-2-74  
A. Larson  
J. Beottcher  
B. Gretzko

FIELD

