

CERTIFICATE OF LOCATION OF GOVERNMENT CORNER

County of Anoka

State of Minnesota

Witness Corner Sec. 8, Township 33, Range 25

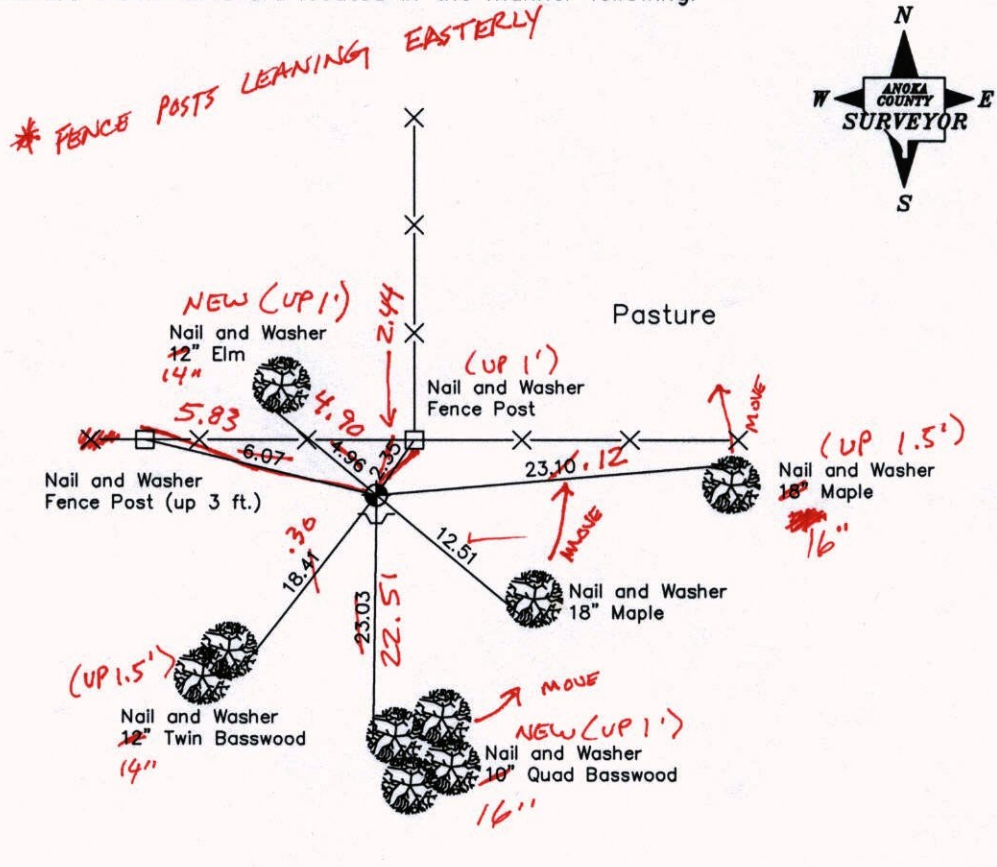
On the North Line of the Northwest Quarter of Sec. 8

I hereby certify that on the 3rd day of June, 1976, I found the described corner which was

evidenced by Area Resurvey

and I further certify that to perpetuate the location of said corner, I did, at the exact location thereof, place a permanent marker consisting of a cast iron monument with a sign and post on the south side *MON. down 0.2' ±*

which reference or witness monuments are located in the manner following:



*3-26-13
BK-SS
TAPED*

Revised date

7-16-85
6-13-89
7-19-94
12-18-02

*YARD OF
HSE # 22100 (NORTH OF HSE 200' ±)*

N.A.D. 1983 Coordinates
(1996 Adjustment)

County Project Coordinates		State Plane Coordinates	
Northing	222638.5495	Y	_____
Easting	443372.9888	X	_____

Date 12-18-02

CERTIFICATE OF LOCATION OF GOVERNMENT CORNER

County of Anoka

State of Minnesota

Witness Corner Sec. 8, Township 33, Range 25

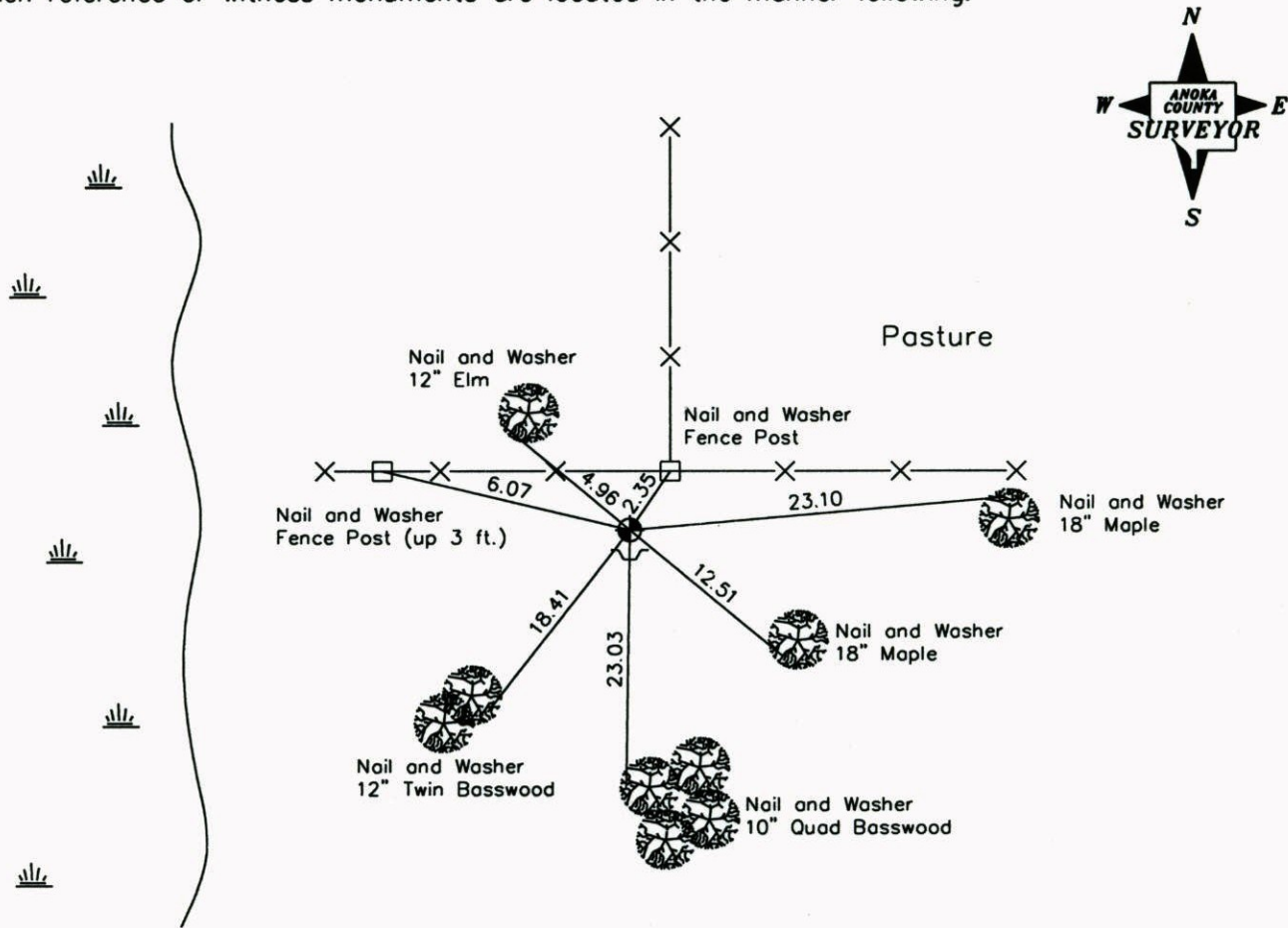
On the North Line of the Northwest Quarter of Sec. 8

I hereby certify that on the 3rd day of June, 1976, I found the described corner which was

evidenced by Area Resurvey

and I further certify that to perpetuate the location of said corner, I did, at the exact location thereof, place a permanent marker consisting of a cast iron monument with a sign and post on the south side

which reference or witness monuments are located in the manner following:



Revised date

7-16-85
6-13-89
7-19-94
12-18-02

N.A.D. 1983 Coordinates
(1996 Adjustment)

County Project Coordinates		State Plane Coordinates	
Northing	222638.5495	Y	_____
Easting	443372.9888	X	_____

Date 12-18-02

CERTIFICATE OF LOCATION OF GOVERNMENT CORNER

County of Anoka

State of Minnesota

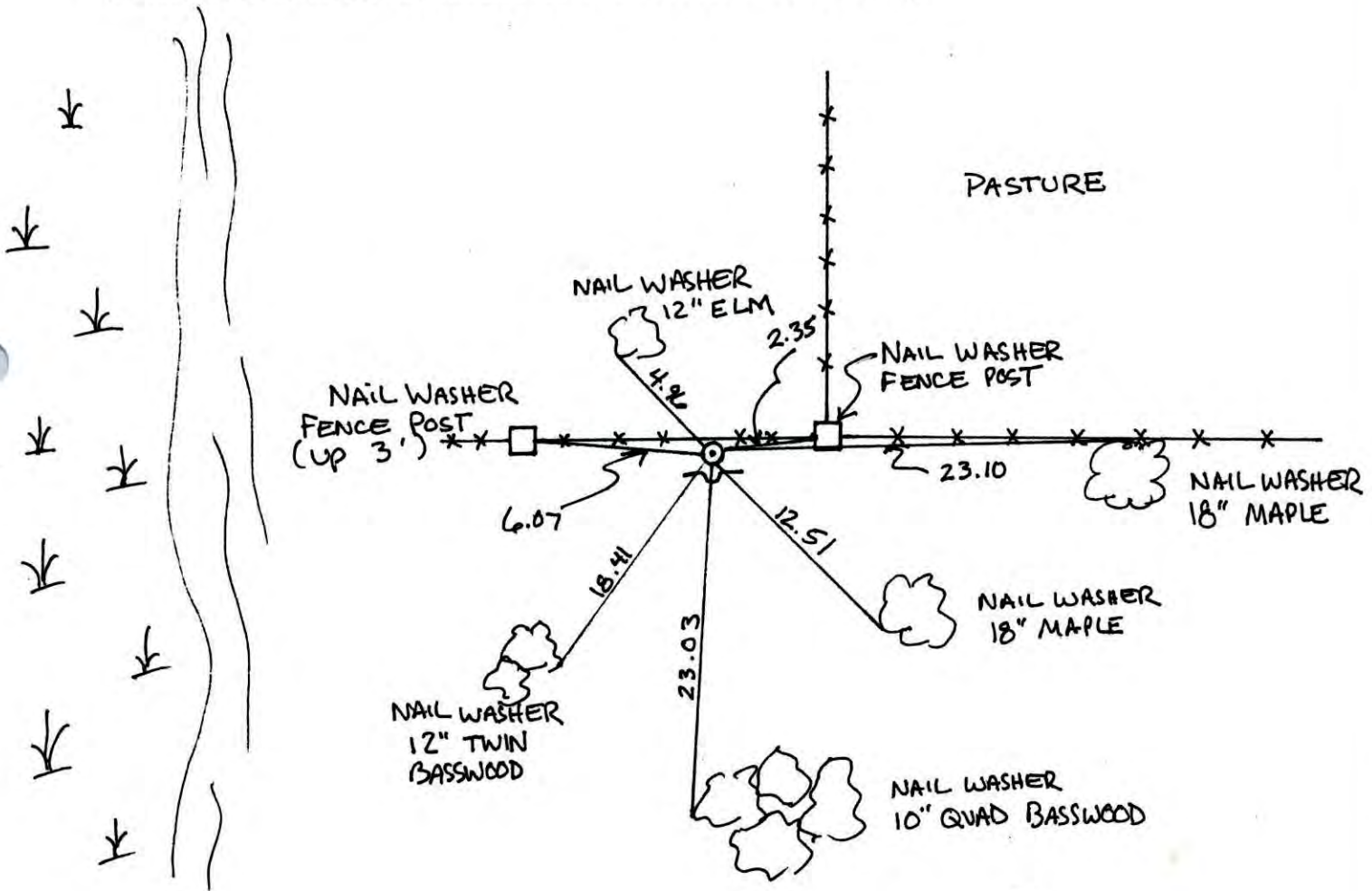
W.C. on North
LINE OF N.W.
ONE QUARTER

Corner of Sec. 8 Township 33 Range 25

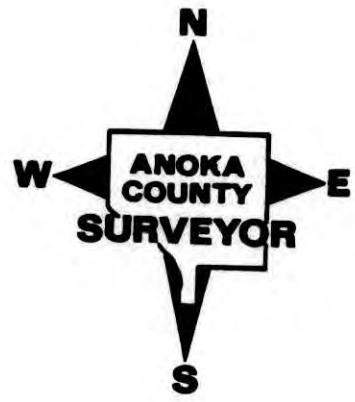
I hereby certify that on the 3 day of JUNE, 19 76, I found the described corner which was evidenced by AREA RESURVEY

and I further certify that to perpetuate the location of said corner, I did, at the exact location thereof, place a permanent marker consisting of CAST IRON MONUMENT
SIGN AND POST ON SOUTH SIDE

which reference or witness monuments are located in the manner following:



Revised date	Revised date	Revised date
7-16-85		
6-13-89		
7-19-94		
12-18-02		

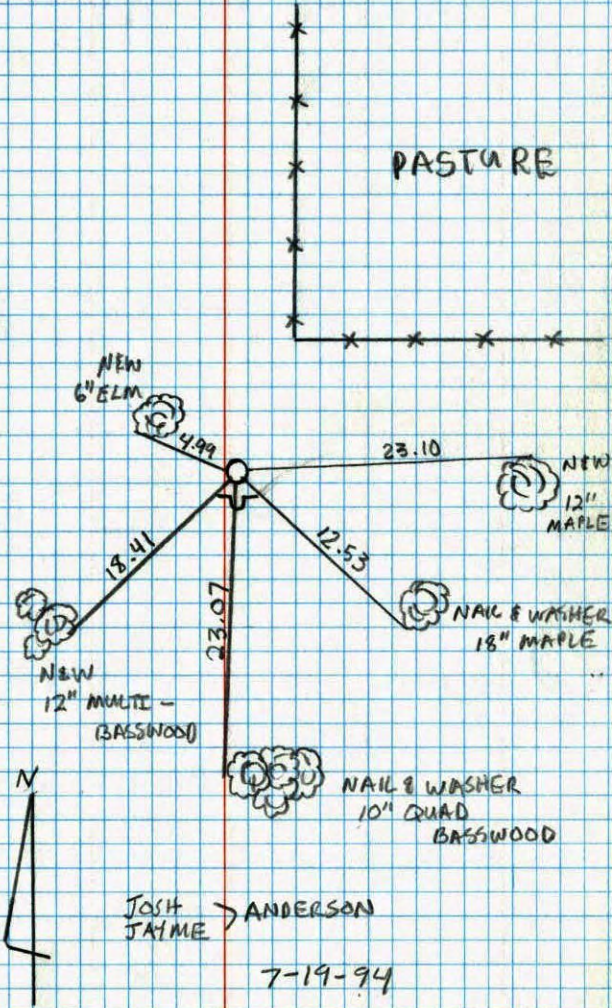


W.C. ON NORTH
LINE OF NW 1/4

S. 8 Twp. 33 R. 25

pg. 30B

RETIRED CAST IRON MONUMENT



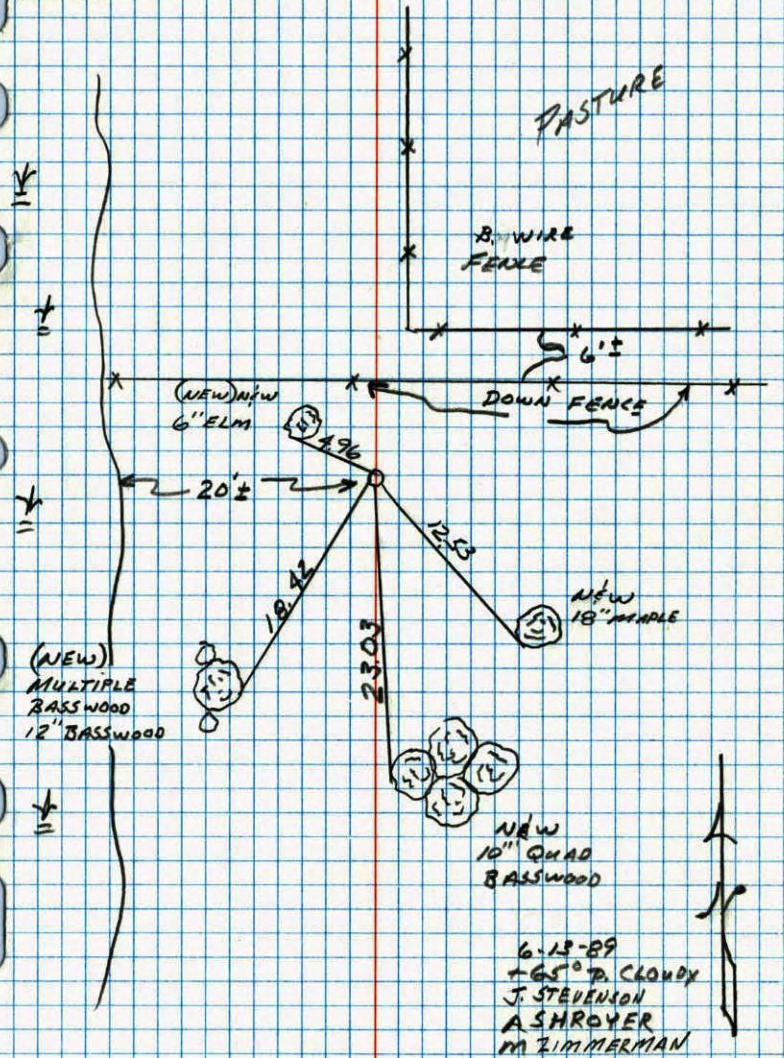
NO. 448

TELEPHONE

30B

WITNESS CORNER ON NORTH LINE OF
NORTHWEST 1/4 CORNER SEC. 8 TWP 33 R 25

RETIRED CAST IRON MONUMENT SIGN & POST ON SOUTH SIDE



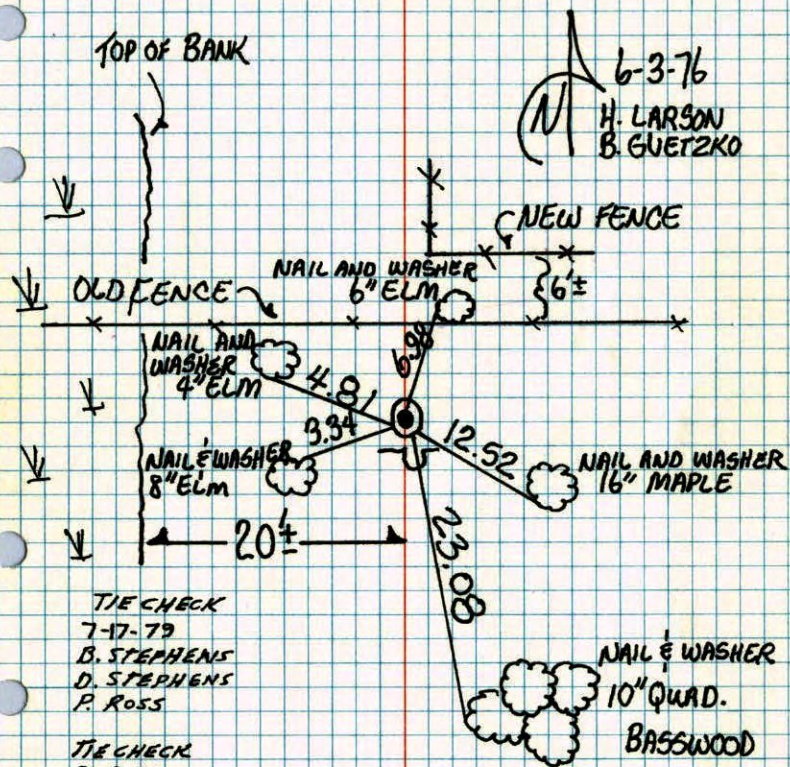
NO. 448

TELEPHONE

W.C. ON N. LINE OF N.W. 1/4 COR.

SEC. 8 T.33 R.25

GET CAST IRON MONUMENT FROM AREA
RESURVEY. CAST IRON FLUSH WITH
SIGN AND POST ON SOUTH SIDE.



TIE CHECK
7-17-79
B. STEPHENS
D. STEPHENS
P. ROSS

TIE CHECK
8-1-82
P. ROSS
P. HORNBY

TEMPERATURE CORRECTED
AND HORIZONTALLY
TAPED MEASUREMENTS

ROLAND W. ANDERSON.
COUNTY SURVEYOR
ANOKA COUNTY, MINNESOTA

W.C. on North Line of NW 1/4 Sec. 8 T33 R25

Set cast iron monument from area
resurvey. c.i. flush with sign + post
on south side.

6-3-76
80° #7
H. Larson
B. Guetzko

