

# CERTIFICATE OF LOCATION OF GOVERNMENT CORNER

County of Anoka

State of Minnesota

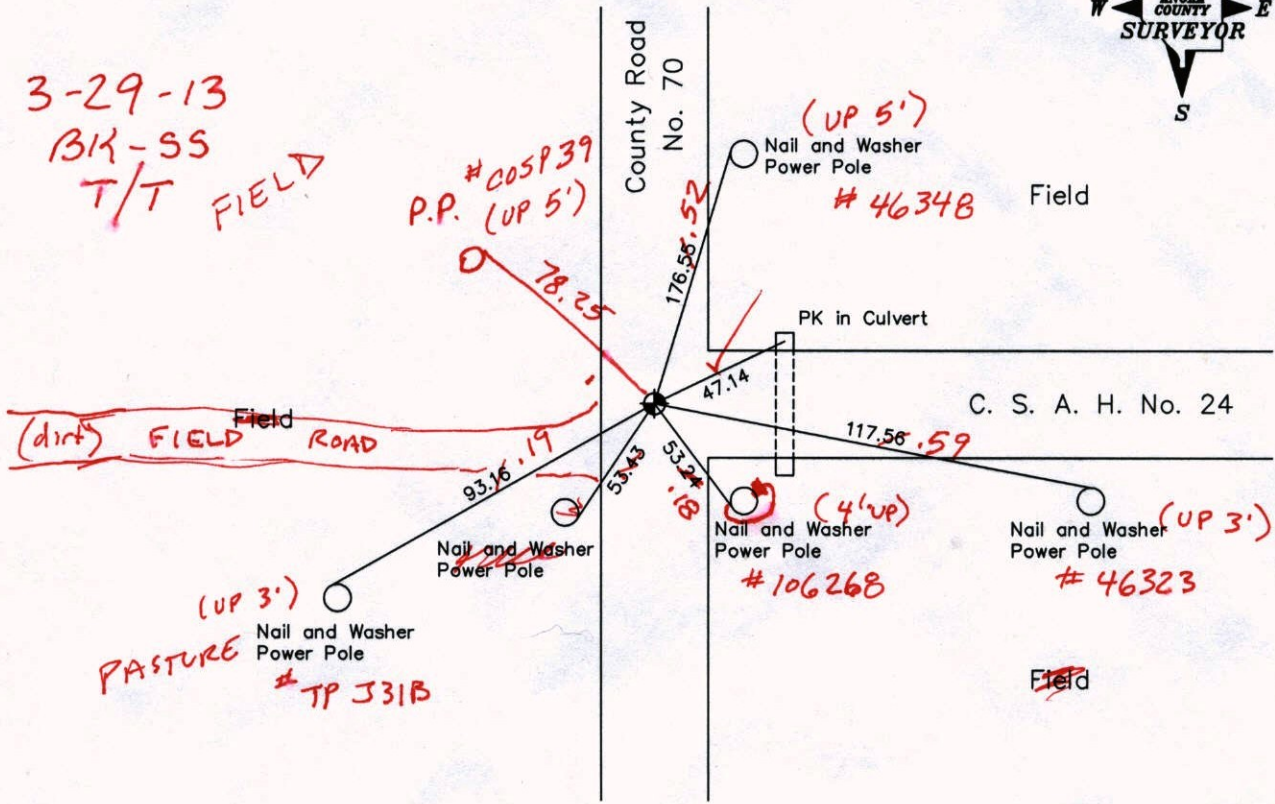
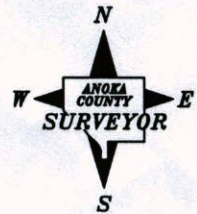
## West 1/4 Corner of Sec. 7, Township 33, Range 25

I hereby certify that on the 15th day of January, 1964, I found the described corner which was evidenced by Ties From Sherburne County Highway Department

and I further certify that to perpetuate the location of said corner, I did, at the exact location thereof, place a permanent marker consisting of a cast iron monument (1' ± E. of E. AND 4' ± N. of E.)

? north side ?

which reference or witness monuments are located in the manner following:



Revised date

6-27-85
8-23-88
6-28-94
9-23-02
8-30-04

N.A.D. 1983 Coordinates  
(1996 Adjustment)

County Project Coordinates		State Plane Coordinates	
Northing	220107.7027	Y	_____
Easting	437427.7138	X	_____

Date 8-21-02

VRS 3DQ = 0.04      N = 220107.6908      E = 437427.6505

# CERTIFICATE OF LOCATION OF GOVERNMENT CORNER

County of Anoka

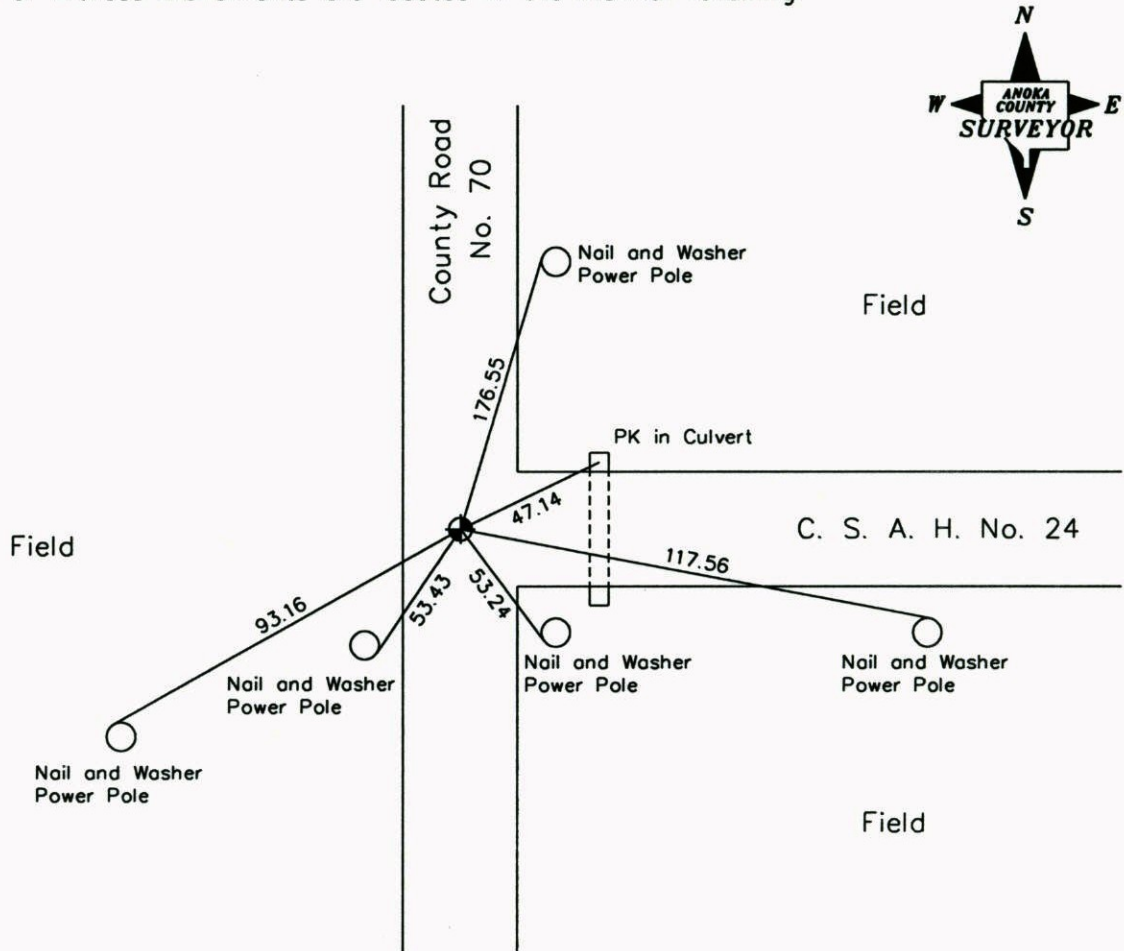
State of Minnesota

## West 1/4 Corner of Sec. 7, Township 33, Range 25

I hereby certify that on the 15th day of January, 1964, I found the described corner which was evidenced by Ties From Sherburne County Highway Department

and I further certify that to perpetuate the location of said corner, I did, at the exact location thereof, place a permanent marker consisting of a cast iron monument  
north side

which reference or witness monuments are located in the manner following:



Revised date

6-27-85
8-23-88
6-28-94
9-23-02
8-30-04

N.A.D. 1983 Coordinates  
(1996 Adjustment)

County Project Coordinates	State Plane Coordinates
Northing <u>220107.7027</u>	Y _____
Easting <u>437427.7138</u>	X _____

Date 8-21-02

# CERTIFICATE OF LOCATION OF GOVERNMENT CORNER

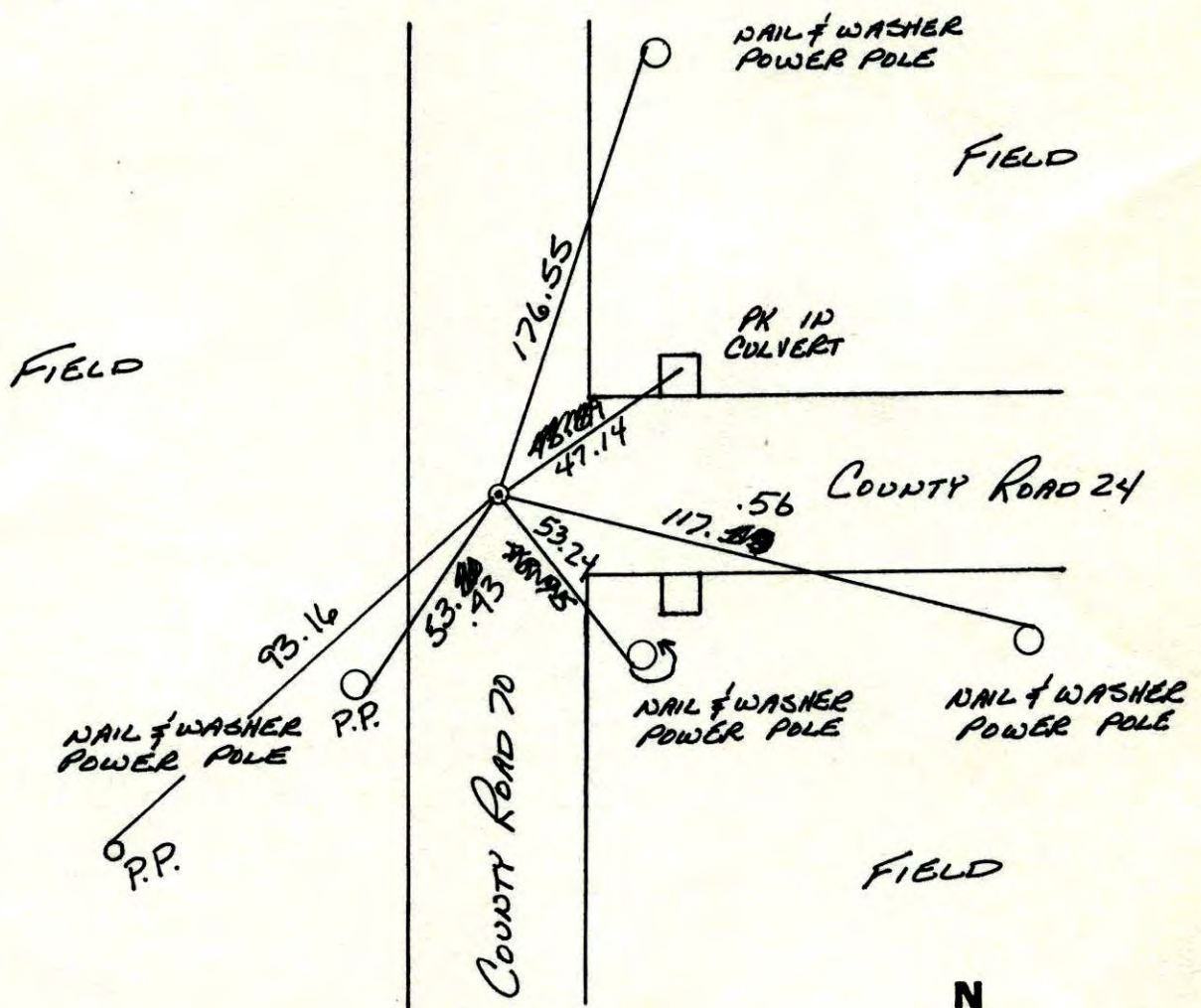
County of Anoka State of Minnesota

WEST 1/4 Corner of Sec. 7 Township 33 Range 25

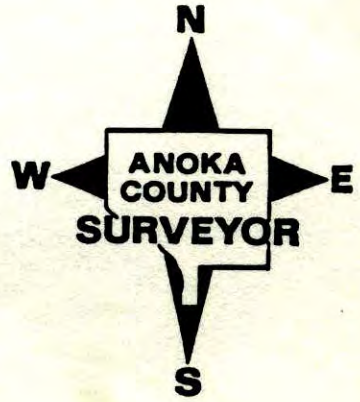
I hereby certify that on the 15 day of JANUARY, 1964, I found the described corner which was evidenced by TIES FROM SHELBURNE CO. HIGHWAY DEPARTMENT TIES

and I further certify that to perpetuate the location of said corner, I did, at the exact location thereof, place a permanent marker consisting of CAST IRON MONUMENT

which reference or witness monuments are located in the manner following:

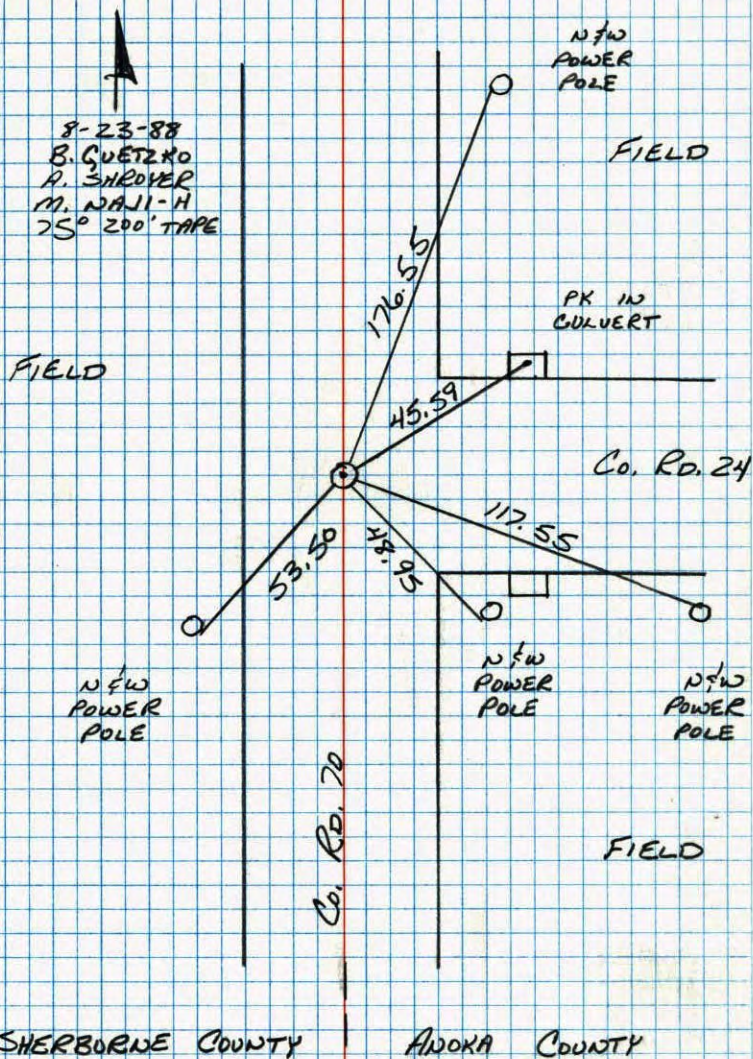


Revised date	Revised date	Revised date
6-27-85		
8-23-88		
6-28-94		
9-23-02		
8-30-04		



W<sup>1</sup>/<sub>4</sub> CORNER SEC 7 T33 R25

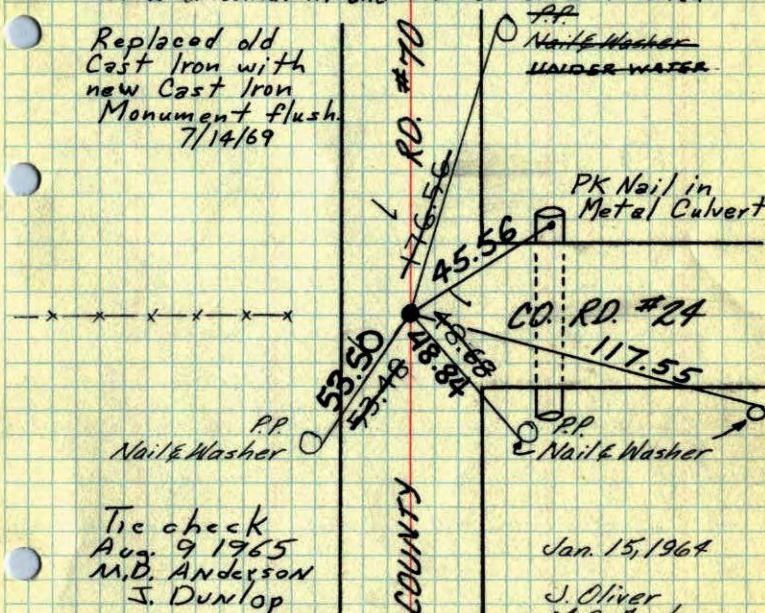
RAISED AND RETIED CAST IRON MONUMENT

W<sup>1</sup>/<sub>4</sub> Cor. Sec. 7-33-25

Set cor. from Sherburne County Highway Dept. ties.

Set PK spike as corner  
 Found Cast Iron Monument down 0.3't, marked  
 "Quarter Cor. Reg. #5333. Cast Iron 3.6' North  
 of E. of Co. Rd. #24 and 0.2' East of E. of Co. Rd.

Replaced old  
 Cast Iron with  
 new Cast Iron  
 Monument flush.  
 7/14/69



Tie check  
 Aug. 9 1965  
 M.D. Anderson  
 J. Dunlop

Tie Check  
 July 8, 1969  
 R. A. Olson  
 B. N. Olson  
 D. Powell

Tie check  
 July 23 1973  
 B. Olson  
 D. B.  
 D. F.

TIE CHECK  
 7-9-79  
 B. STEPHENS  
 D. STEPHENS  
 P. ROSS

TIE CHECK  
 7-30-82  
 P. ROSS  
 P. HORNBY

Jan. 15, 1964

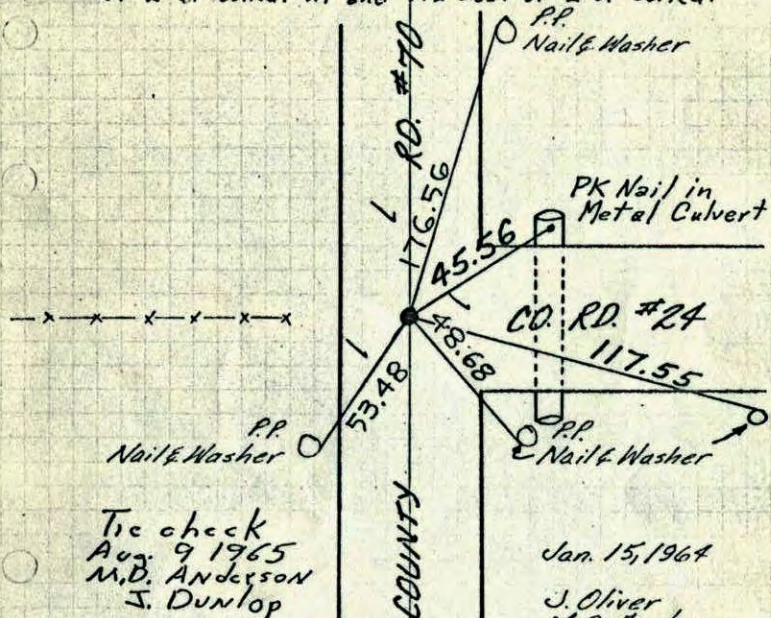
J. Oliver  
 M.D. Anderson  
 M. Nordin  
 TIE CHECK  
 7-19-76  
 G. ADAMS  
 S. BRIEN

ROLAND W. ANDERSON  
 COUNTY SURVEYOR  
 ANOKA COUNTY, MINNESOTA  
 TEMPERATURE CORRECTED  
 AND HORIZONTALLY  
 TAPED MEASUREMENTS

W/4 Cor. Sec. 7-33-25

Set cor. from Sherburne County Highway Dept. ties.

Set PK spike as corner  
 Found Cast Iron Monument down 0.3't, marked  
 Quarter Cor. Reg. #5333 Cast Iron 3.6' North  
 of E of Co. Rd. #24 and 0.2' East of E of Co. Rd.



Tie check  
 Aug. 9 1965  
 M.D. Anderson  
 J. Dunlop

Tie Check  
 July 8, 1969  
 R.A. Olson  
 B.N. Olson

Jan. 15, 1964

J. Oliver  
 M.D. Anderson  
 M. Nordin

Replaced Solid  
 C.I. #5333 with  
 Removeable Flush  
 7/14/69  
 DR

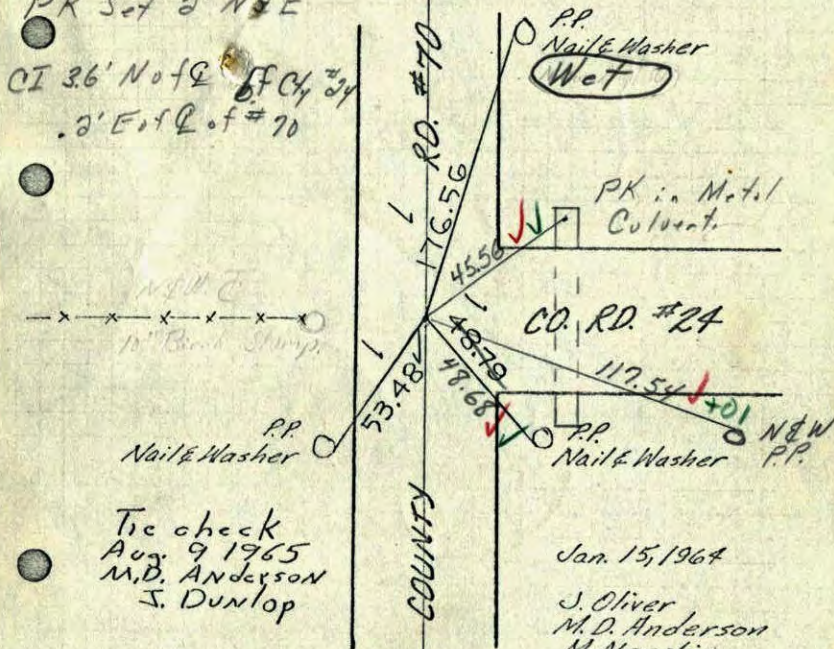
ROLAND W. ANDERSON  
 COUNTY SURVEYOR  
 ANOKA COUNTY, MINNESOTA  
 TEMPERATURE CORRECTED  
 AND HORIZONTALLY  
 TAPED MEASUREMENTS

W/4 Cor. Sec. 7-33-25

Set cor. from Sherburne County Highway Dept. ties.

Set PK spike as corner

Found ~~CI~~ Down .3', Marked Quarter Cor Reg #5333  
 PK Set 2' N&E



Tie check  
 Aug. 9 1965  
 M.D. Anderson  
 J. Dunlop

Jan. 15, 1964

J. Oliver  
 M.D. Anderson  
 M. Nordin

7-8-69

Temp 70 ✓

Tape #5 ✓

R.A. Olson

B.N. Olson

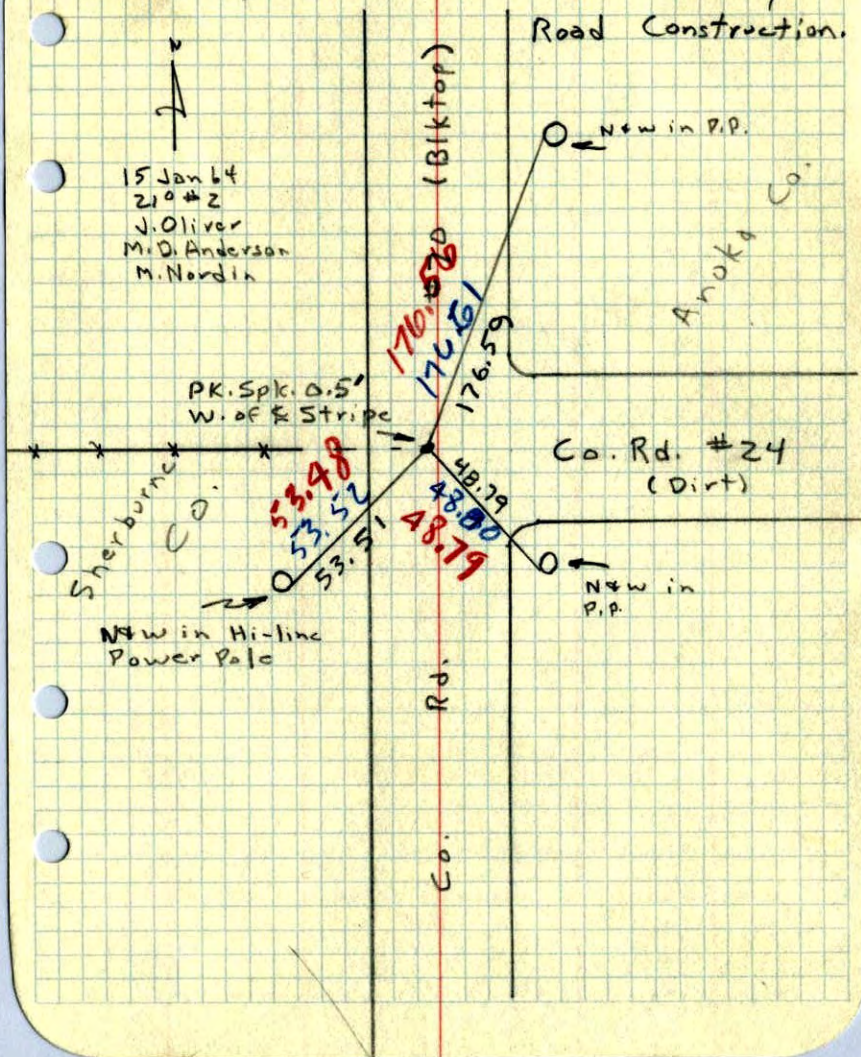
C.I. To be Raised

ROLAND W. ANDERSON  
 COUNTY SURVEYOR  
 ANOKA COUNTY, MINNESOTA  
 TEMPERATURE CORRECTED  
 AND HORIZONTALLY  
 TAPED MEASUREMENTS

W<sup>1</sup>/<sub>4</sub> Cor. Sec. 7, T 33, R 25

- Swung Ties from Sherburne Co. Highway
- Dept to 1/2" Iron. Pipe. Ties fit almost perfect. Got no dip. Set PK Spk. in Blacktop, Old Ties made unusable by

Road Construction.



E<sup>1</sup>/<sub>4</sub> 12, 33, 26  
1/2" I. P. ✓

30" Birch w 57.28  
P.P. SE 48.83  
P.P. SW 47.03