

# CERTIFICATE OF LOCATION OF GOVERNMENT CORNER

County of Anoka

State of Minnesota

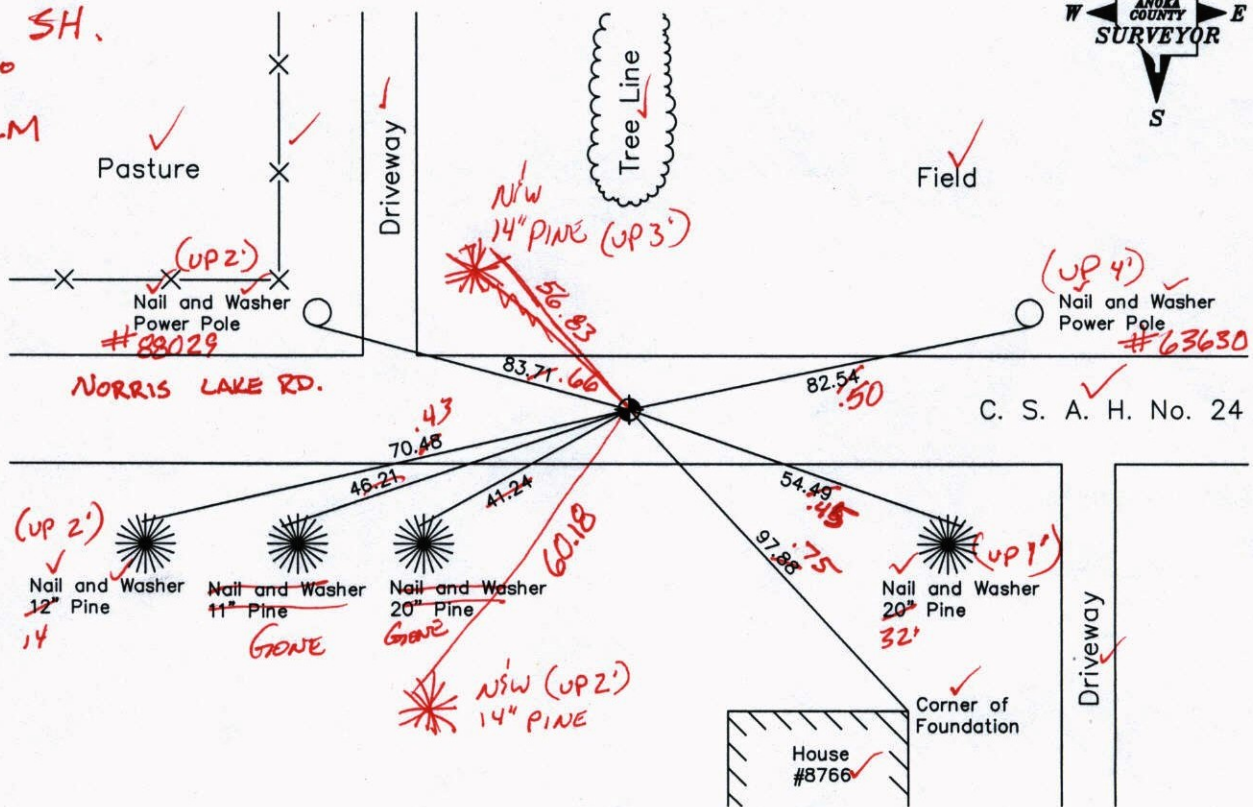
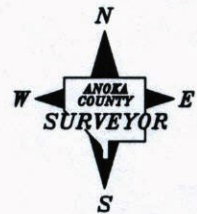
West 1/4 Corner of Sec. 8, Township 33, Range 25

I hereby certify that on the 4th day of October, 1974, I found the described corner which was evidenced by Area Resurvey

and I further certify that to perpetuate the location of said corner, I did, at the exact location thereof, place a permanent marker consisting of a cast iron monument (Down 0.1)

which reference or witness monuments are located in the manner following:

3-26-13  
J.S. SH.  
31°  
CALM



Revised date

6-27-85
8-26-88
6-28-94
9-23-02

VRS COORD'S  
3D = 0.06

N.A.D. 1983 Coordinates  
(1996 Adjustment)

County Project Coordinates		State Plane Coordinates	
Northing	220032.7158	Y	_____
Easting	442346.0737	X	_____

N: 220032.6987 Date 8-21-02  
E: 442346.0369



# CERTIFICATE OF LOCATION OF GOVERNMENT CORNER

County of Anoka

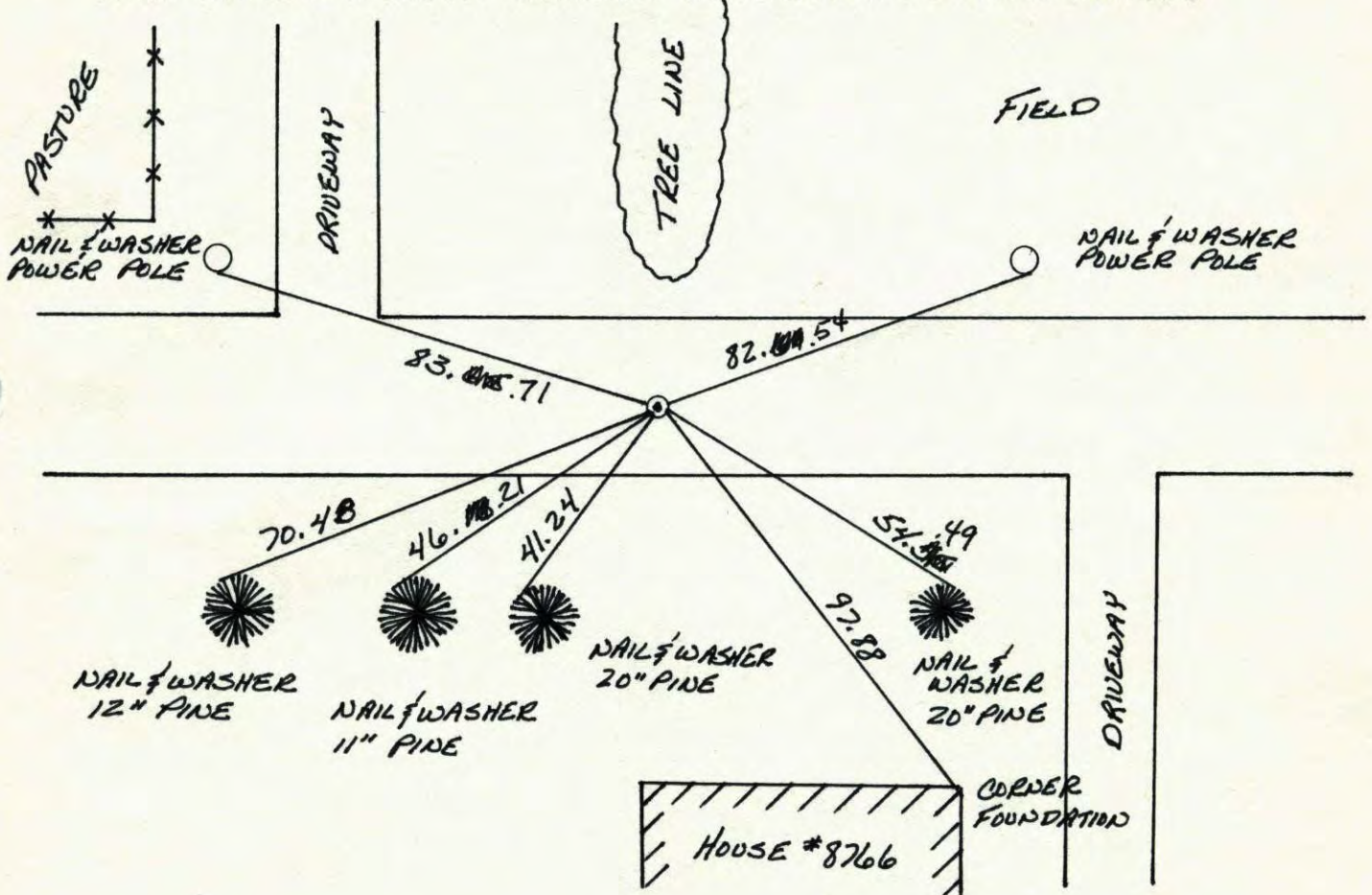
State of Minnesota

WEST 1/4 Corner of Sec. 8 Township 33 Range 25

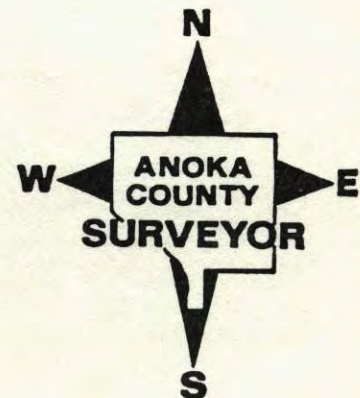
I hereby certify that on the 4 day of OCTOBER, 1974, I found the described corner which was evidenced by AREA RESURVEY

and I further certify that to perpetuate the location of said corner, I did, at the exact location thereof, place a permanent marker consisting of CAST IRON MONUMENT

which reference or witness monuments are located in the manner following:

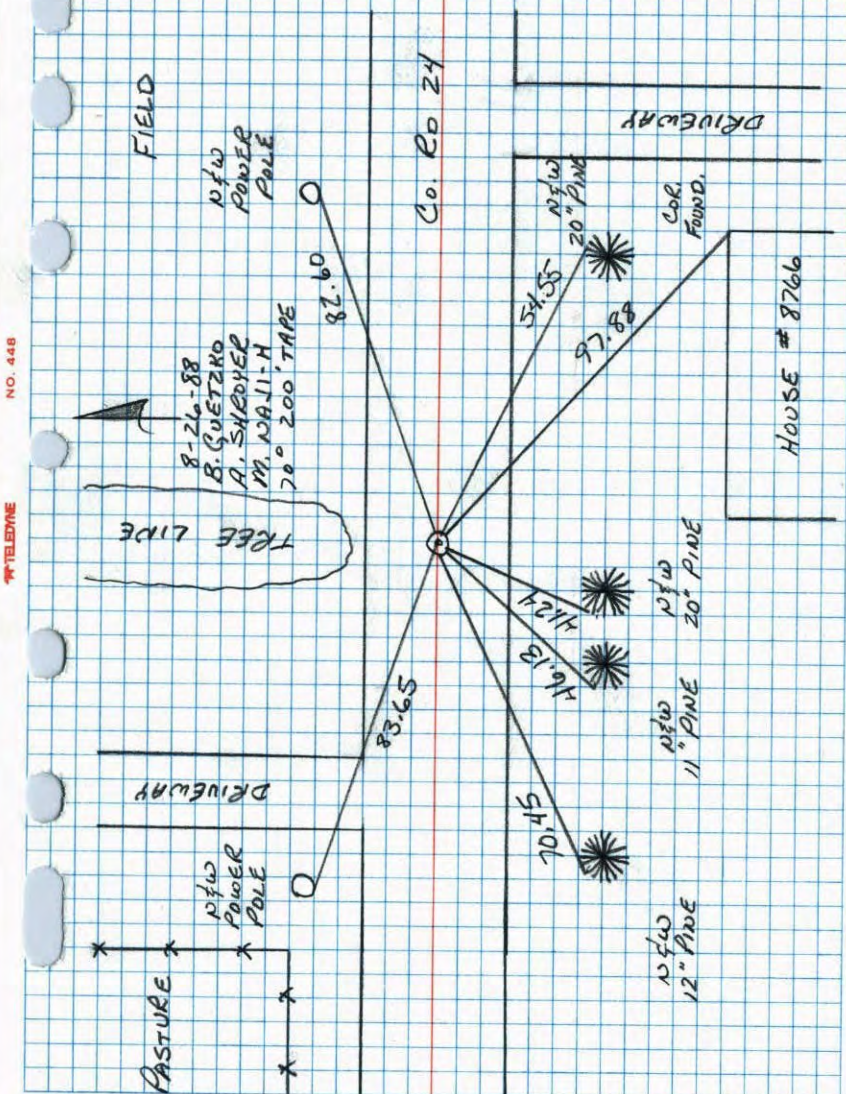


Revised date	Revised date	Revised date
6-27-85		
8-26-88		
6-28-94		
9-23-02		



W 1/4 CORNER SEC 8 T33 R25

RETIRED CAST IRON MONUMENT



NO. 448

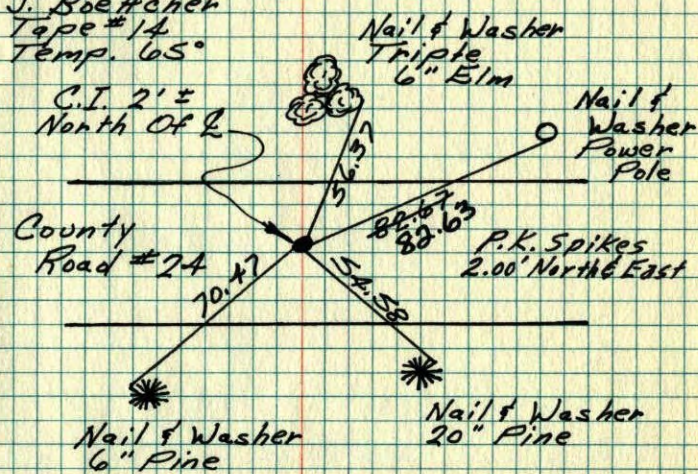
TELETYPE

W 1/4 Cor. Sec 8-T33-R25

Set Cast Iron Monument From Area Resurvey. P.K.'s 2.00' N+E.

Oct. 4, 1974

H. Larson  
R. Guetzko  
J. Boettcher  
Tape # 14  
Temp. 65°



TIE CHECK

7-19-76  
G. ADAMS  
S. BRIEN

TIE CHECK

7-9-79  
B. STEPHENS  
D. STEPHENS  
P. ROSS

TIE CHECK

8-2-82  
P. ROSS  
R. HORNBY

ROLAND W. ANDERSON COUNTY SURVEYOR ANOKA COUNTY, MINNESOTA  
TEMPERATURE CORRECTED AND HORIZONTALLY TAPED MEASUREMENTS

W 1/4 Cor. Sec. 8 T33 R25

Set cast iron monument from area

resurvey. PK<sup>s</sup> 2.00 N+E.

65° 31' 4  
H. Larson  
J. Seatcher  
B. Guetzko  
10-4-74

