

CERTIFICATE OF LOCATION OF GOVERNMENT CORNER

County of Anoka

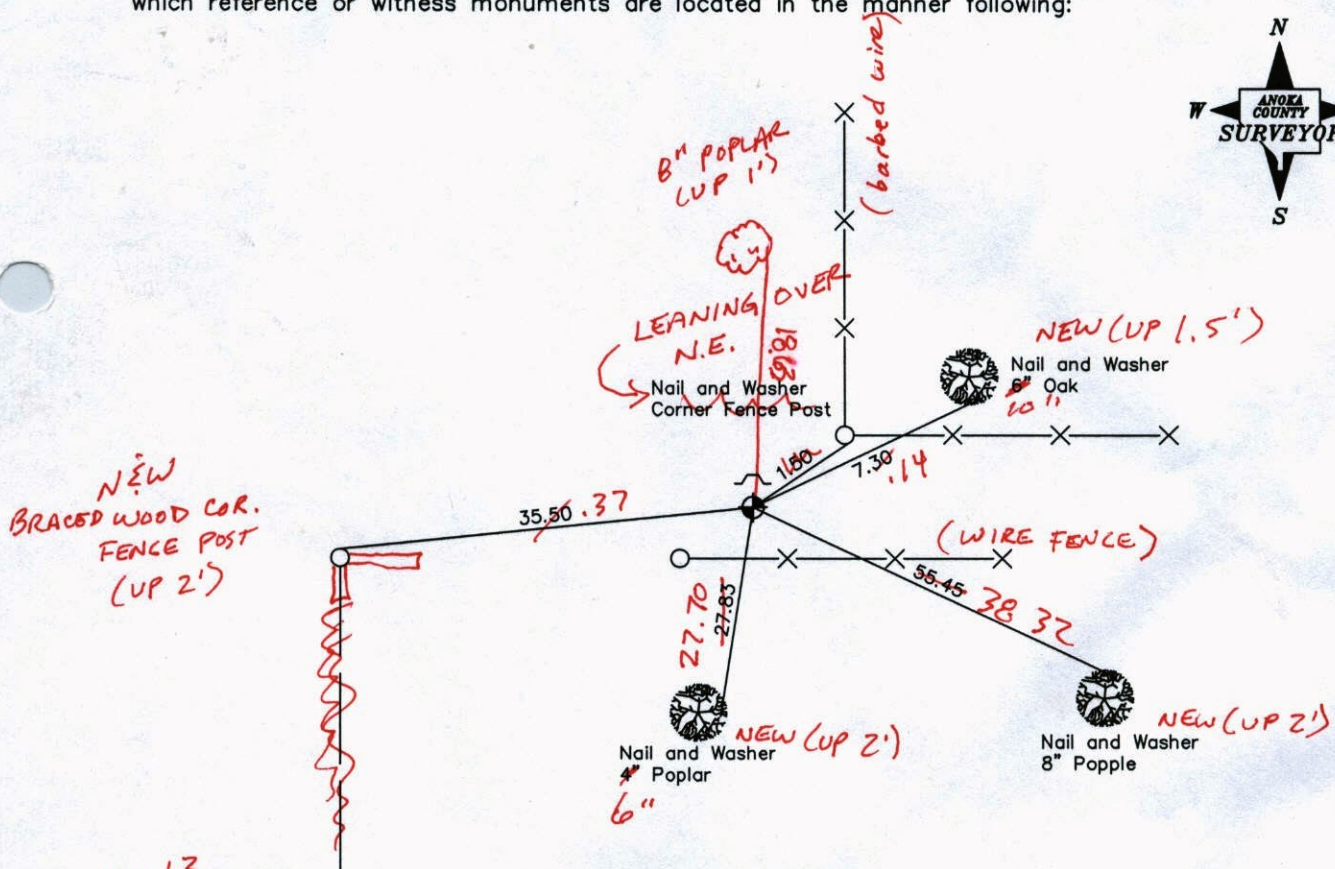
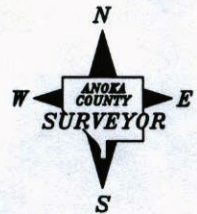
State of Minnesota

North 1/4 Corner of Sec. 13, Township 33, Range 25

I hereby certify that on the 5th day of May, 1967, I found the described corner which was evidenced by Area Resurvey

and I further certify that to perpetuate the location of said corner, I did, at the exact location thereof, place a permanent marker consisting of a cast iron monument with a sign and post on the north side

which reference or witness monuments are located in the manner following:



4-19-13
BK-55
TAPED

Revised date

7-11-85
7-7-89
7-20-94
12-10-02

N.A.D. 1983 Coordinates
(1996 Adjustment)

County Project Coordinates		State Plane Coordinates	
Northing	217146.0275	Y	_____
Easting	466025.6606	X	_____

Date 12-10-02

CERTIFICATE OF LOCATION OF GOVERNMENT CORNER

County of Anoka

State of Minnesota

North 1/4 Corner of Sec. 13, Township 33, Range 25

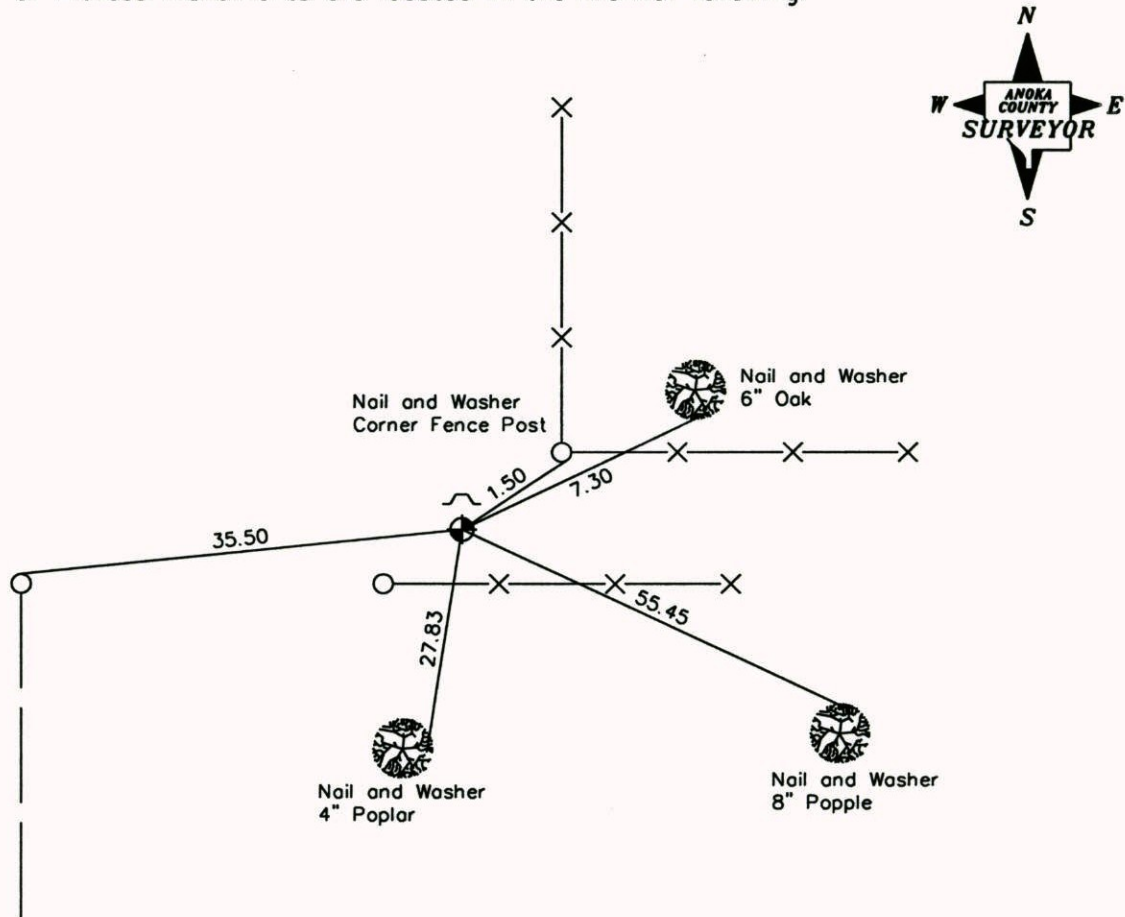
I hereby certify that on the 5th day of May, 1967, I found the described corner which was

evidenced by Area Resurvey

and I further certify that to perpetuate the location of said corner, I did, at the exact location

thereof, place a permanent marker consisting of a cast iron monument with a sign and post on the north side

which reference or witness monuments are located in the manner following:



Revised date

7-11-85
7-7-89
7-20-94
12-10-02

N.A.D. 1983 Coordinates
(1996 Adjustment)

County Project Coordinates	
Northing	<u>217146.0275</u>
Easting	<u>466025.6606</u>

State Plane Coordinates	
Y	_____
X	_____

Date 12-10-02

CERTIFICATE OF LOCATION OF GOVERNMENT CORNER

County of Anoka

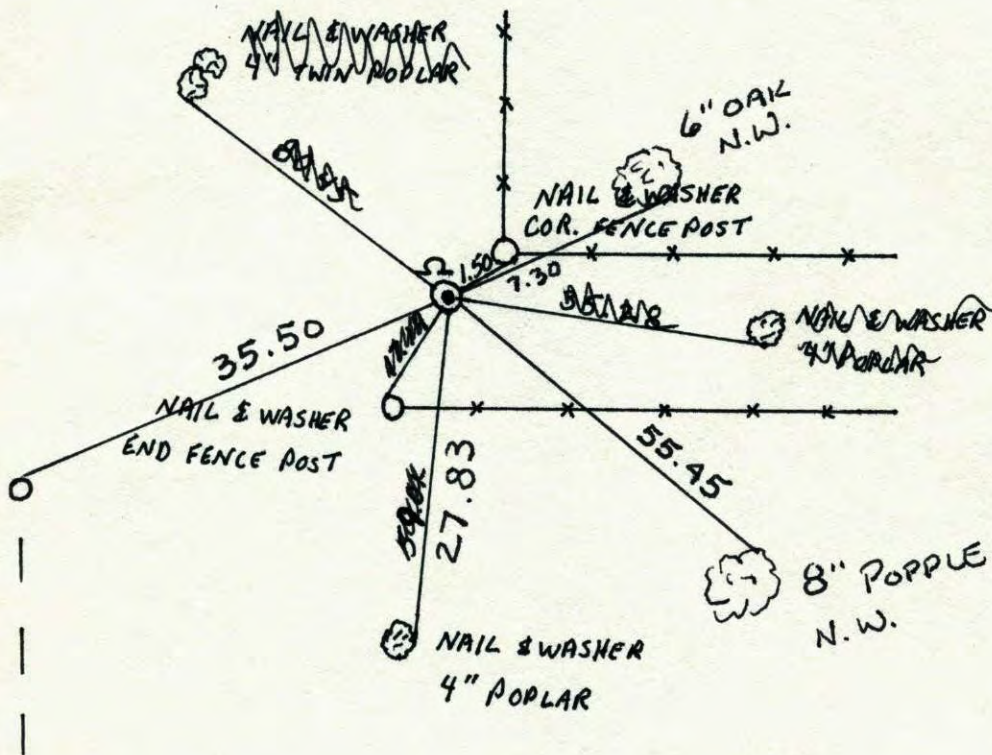
State of Minnesota

NORTH 1/4 Corner of Sec. 13 Township 33 Range 25

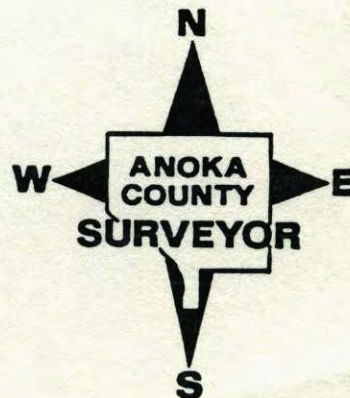
I hereby certify that on the 5 day of MAY, 1967, I found the described corner which was evidenced by AREA RESURVEY

and I further certify that to perpetuate the location of said corner, I did, at the exact location thereof, place a permanent marker consisting of CAST IRON SIGN POST ON NORTH SIDE

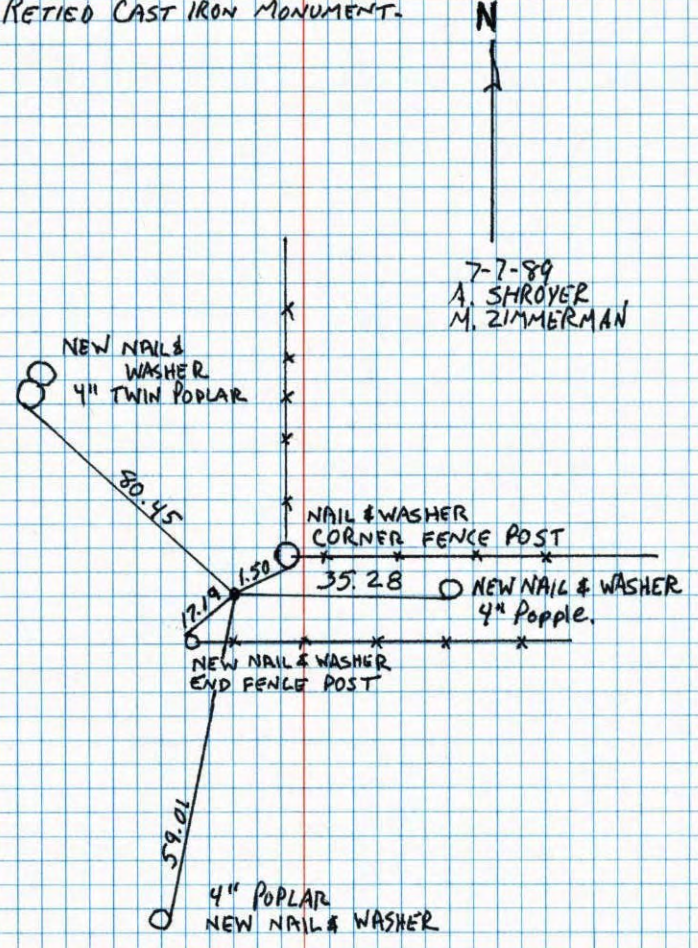
which reference or witness monuments are located in the manner following:



Revised date	Revised date	Revised date
7-11-85		
7-7-89		
7-20-94		
12-10-02		



NORTH ¼ CORNER SEC. 13 T33 R25
RETIED CAST IRON MONUMENT.

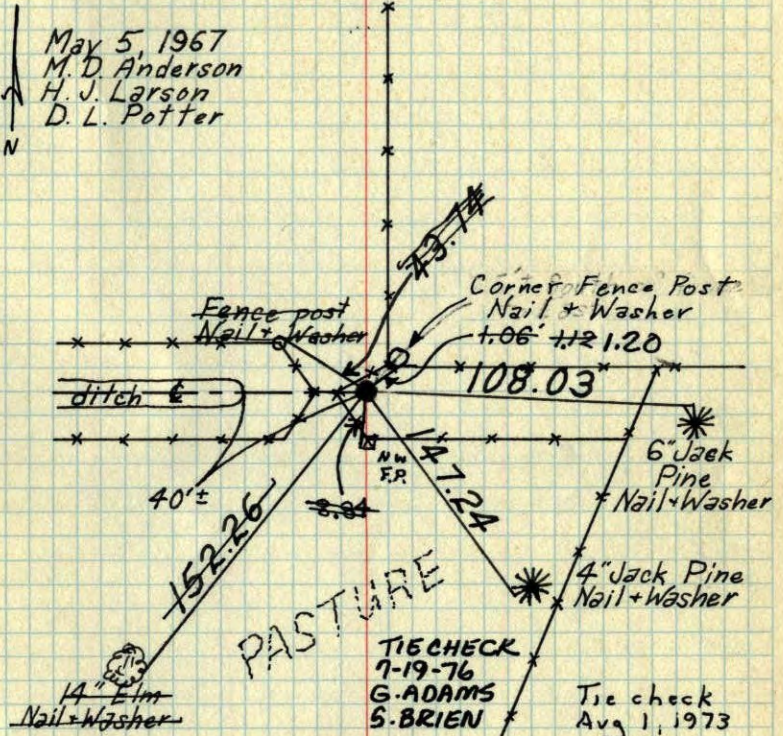


7-7-89
A. SHROYER
M. ZIMMERMAN

NO. 448
TELEPHONE

N¼ Cor. Sec. 13-T33-R25

Set Cast Iron Monument from area resurvey.
Cast Iron Monument flush and 1.5' West and
0.5' South of fence corner.



May 5, 1967
M. D. Anderson
H. J. Larson
D. L. Potter

Tie Check
July 16, 1969
D. Powell
R. Olson
B. Olson

TIE CHECK
7-16-79
B. STEPHENS
D. STEPHENS
P. ROSS

Tie check
Aug 1, 1973
B. Olson
D. B.
D. F.

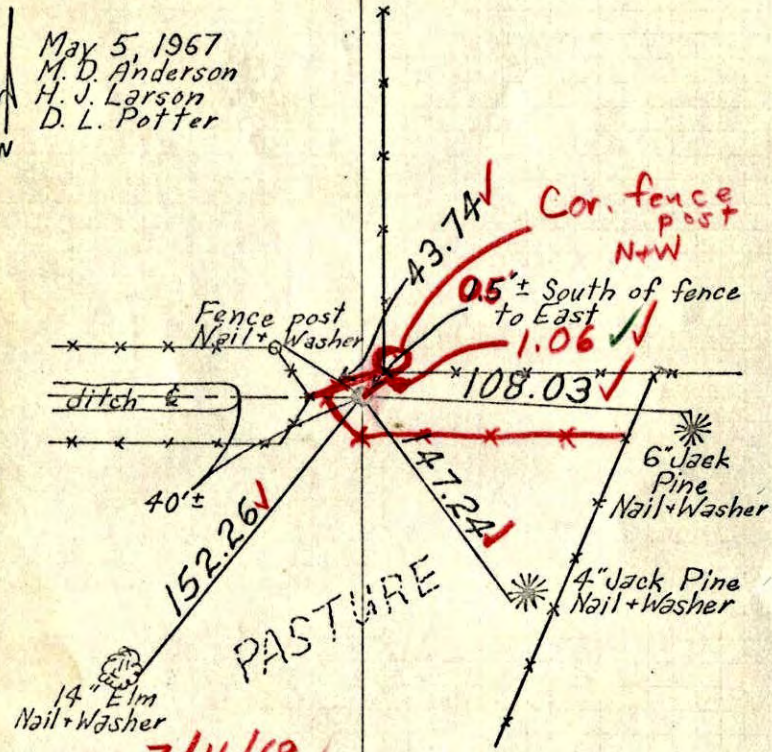
TIE CHECK
8-6-82
P. Ross
P. Hornby

TEMPERATURE CORRECTED AND HORIZONTALLY TAPED MEASUREMENTS
ROLAND W. ANDERSON
COUNTY SURVEYOR
ANOKA COUNTY, MINNESOTA

N¹/₄ Cor. Sec. 13-T33-R25

Set Cast Iron Monument from area resurvey.
Cast Iron Monument flush and 1.5' West and 0.5' South of fence corner.

May 5, 1967
M. D. Anderson
H. J. Larson
D. L. Potter



7/16/69
#5-86
D. Powell
R. Olson
B. Olson

TEMPERATURE CORRECTED
AND HORIZONTALLY
TAPED MEASUREMENTS

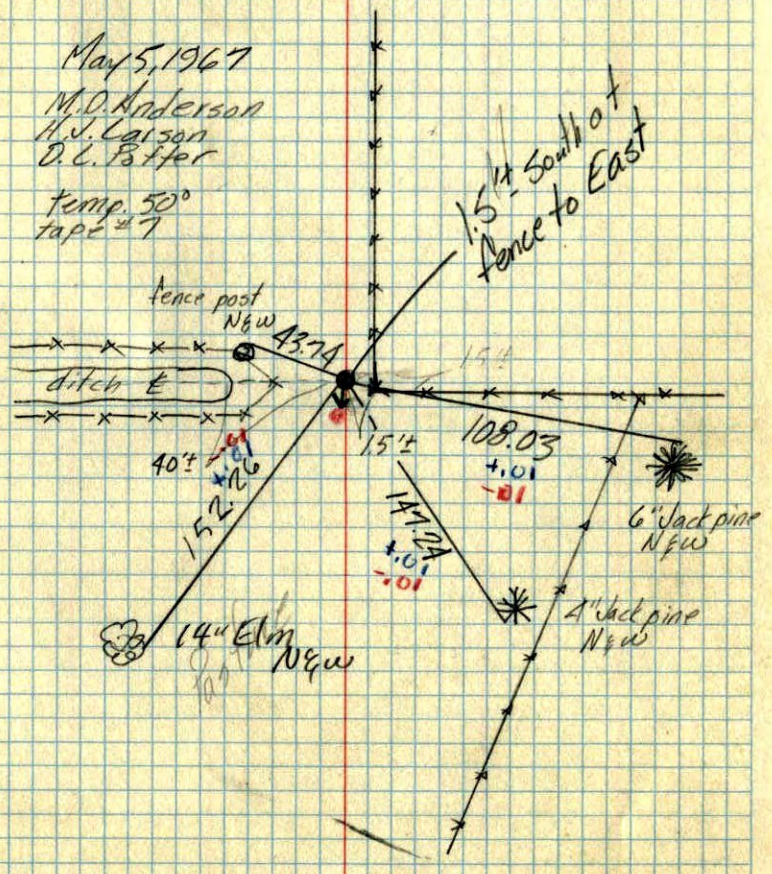
ROLAND W. ANDERSON
COUNTY SURVEYOR
ANOKA COUNTY, MINNESOTA

N¹/₄ Cor. Sec. 13-T33-R25

Set C.I. Monument from area resurvey
C.I. Mon. flush & 1.5' W & 1.5' S. of fence cor.

May 5, 1967
M. D. Anderson
H. J. Larson
D. L. Potter

Temp. 50°
tape #7



TEMPERATURE CORRECTED
AND HORIZONTALLY
TAPED MEASUREMENTS

ROLAND W. ANDERSON
COUNTY SURVEYOR
ANOKA COUNTY, MINNESOTA