

CERTIFICATE OF LOCATION OF GOVERNMENT CORNER

County of Anoka

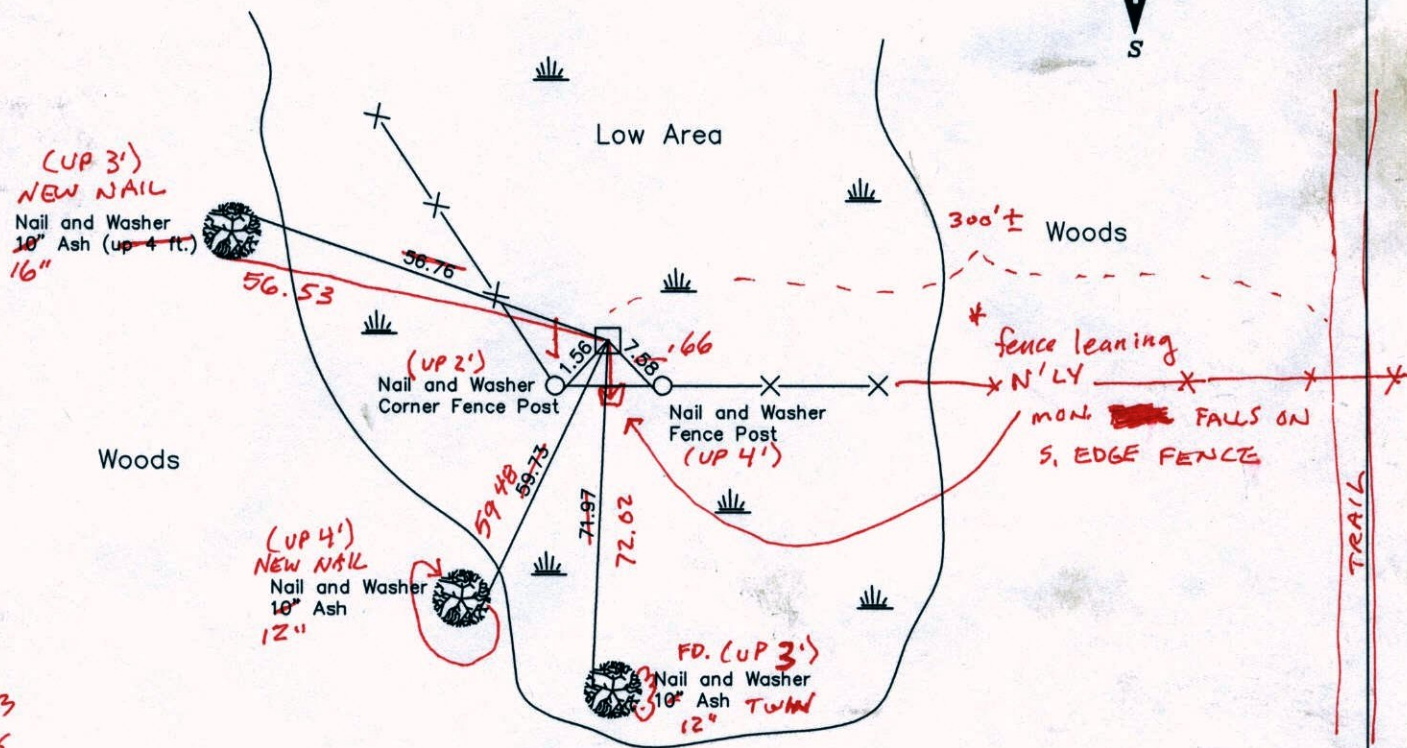
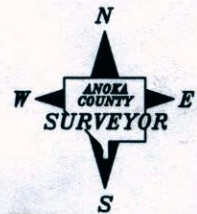
State of Minnesota

Northeast Corner of Sec. 16, Township 33, Range 25

I hereby certify that on the 3rd day of October, 1963, I found the described corner which was evidenced by a 4 inch by 4 inch concrete monument

and I further certify that to perpetuate the location of said corner, I did, at the exact location thereof, place a permanent marker consisting of a 4 inch by 4 inch concrete monument ** slightly leaning easterly ± 0.2'*

which reference or witness monuments are located in the manner following:



*10-22-13
BK-55
TAPED*

Revised date Revised date

8-10-73	12-10-02
7-21-76	
7-1-25	
6-23-89	
7-12-94	

N.A.D. 1983 Coordinates
(1996 Adjustment)

County Project Coordinates		State Plane Coordinates	
Northing	217259.0271	Y	_____
Easting	452859.5664	X	_____

Date 12-10-02

CERTIFICATE OF LOCATION OF GOVERNMENT CORNER

County of Anoka

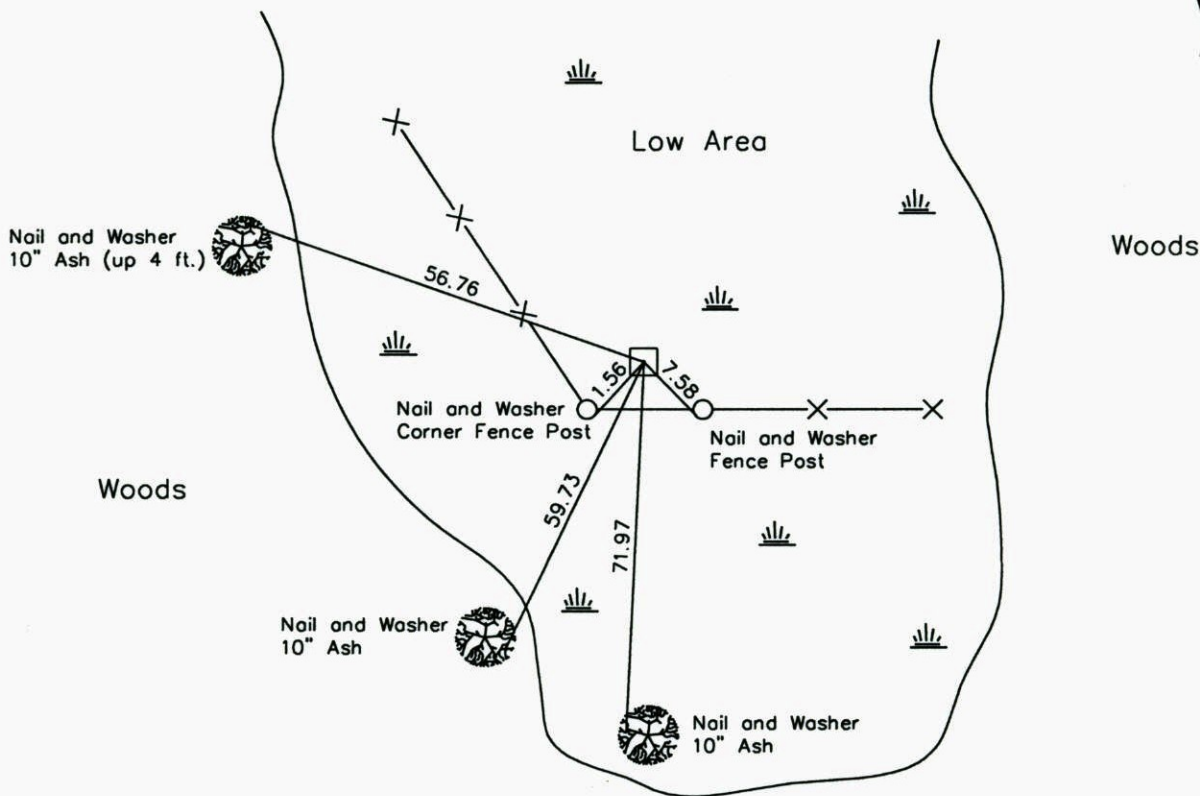
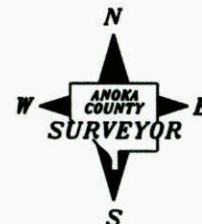
State of Minnesota

Northeast Corner of Sec. 16, Township 33, Range 25

I hereby certify that on the 3rd day of October, 1963, I found the described corner which was evidenced by a 4 inch by 4 inch concrete monument

and I further certify that to perpetuate the location of said corner, I did, at the exact location thereof, place a permanent marker consisting of a 4 inch by 4 inch concrete monument

which reference or witness monuments are located in the manner following:



Revised date Revised date

N.A.D. 1983 Coordinates
(1996 Adjustment)

8-10-73	12-10-02
7-21-76	
7-1-25	
6-23-89	
7-12-94	

County Project Coordinates	
Northing	217259.0271
Easting	452859.5664

State Plane Coordinates	
Y	
X	

Date 12-10-02

CERTIFICATE OF LOCATION OF GOVERNMENT CORNER

County of Anoka

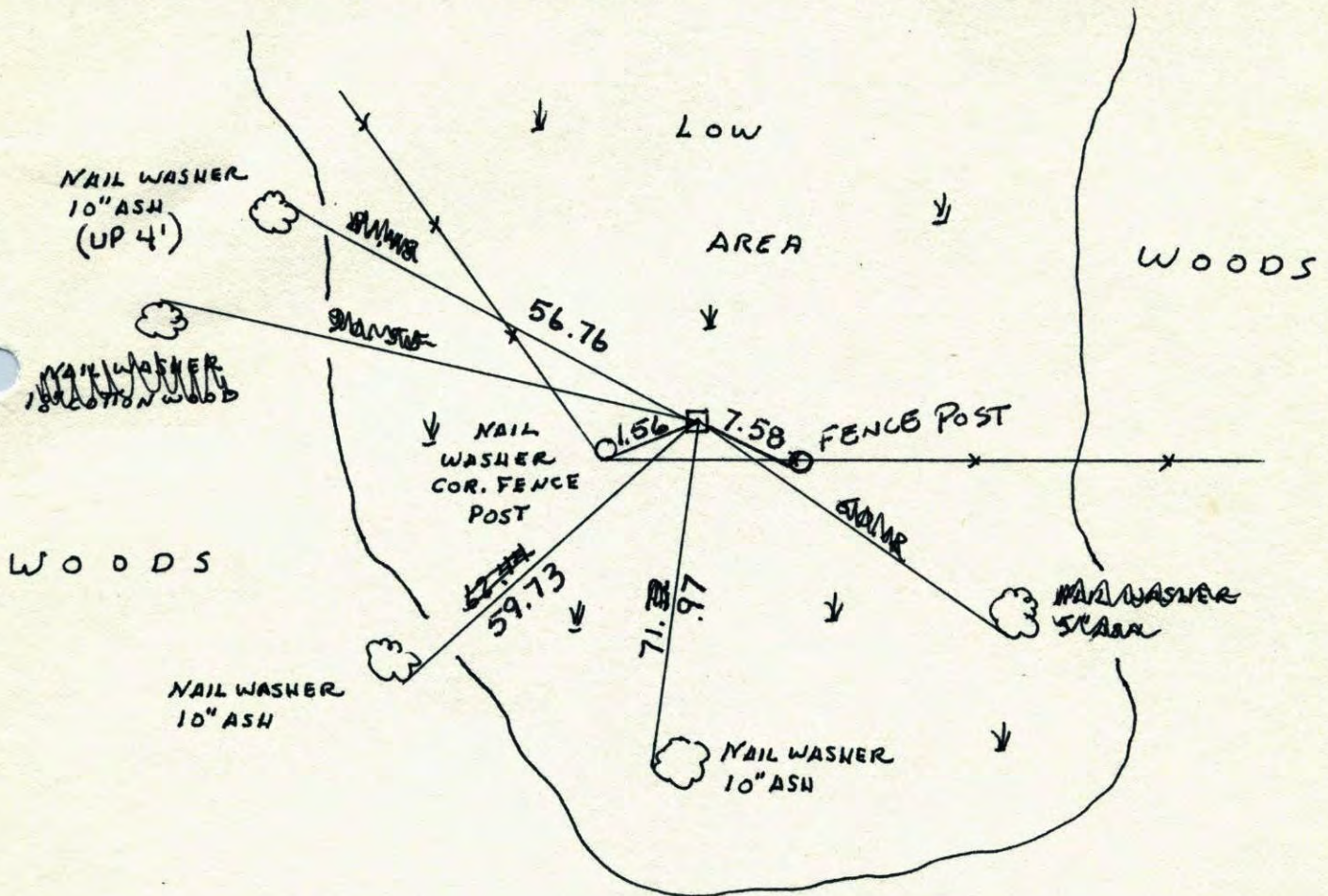
State of Minnesota

NORTHEAST Corner of Sec. 16 Township 33 Range 25

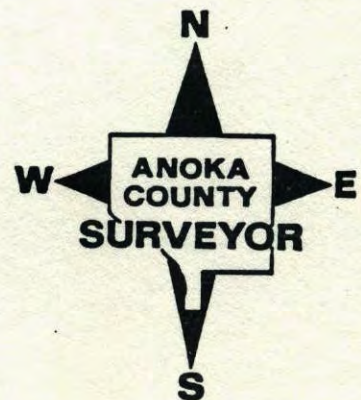
I hereby certify that on the 3 day of OCT, 1963, I found the described corner which was evidenced by 4" x 4" CONCRETE

and I further certify that to perpetuate the location of said corner, I did, at the exact location thereof, place a permanent marker consisting of CONCRETE

which reference or witness monuments are located in the manner following:

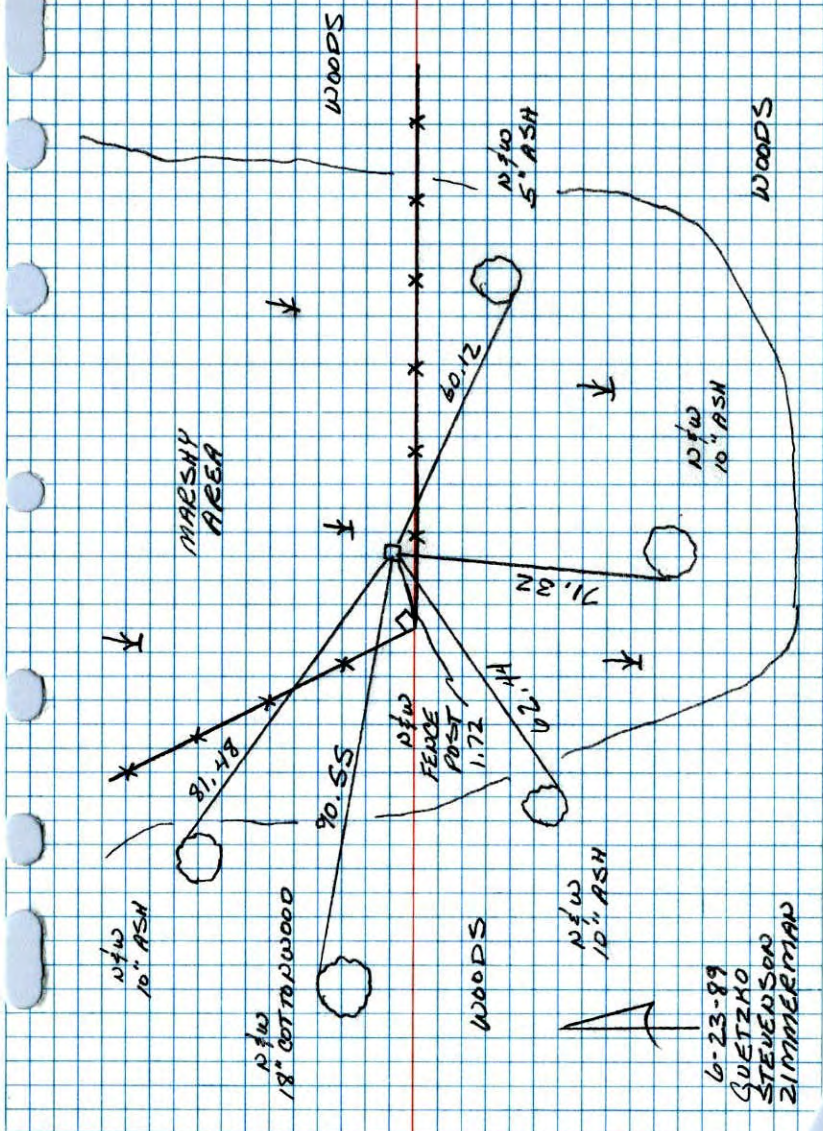


Revised date	Revised date	Revised date
8-10-73		
7-21-76		
7-1-25		
6-23-89		
7-12-94		
12-10-02		



NORTHEAST CORNER SEC 16 T33 R25

RETIED 4" x 4" CONCRETE MONUMENT



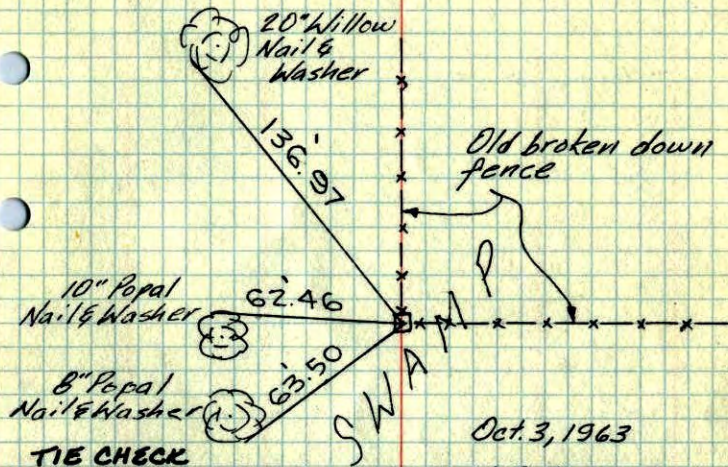
NO. 448

TELETYPE

N.E. Cor. Sec. 16-33-25

found 4" x 4" Conc. Monument

Up 0.6'



TIE CHECK
7-21-76
G. ADAMS
S. BRIEN

WET-79

Oct. 3, 1963

M. D. Anderson
Gene Madson

Wet 7/16/69

Tie. check
Aug. 10. 1973
B. Olson
D. B.
D. F.

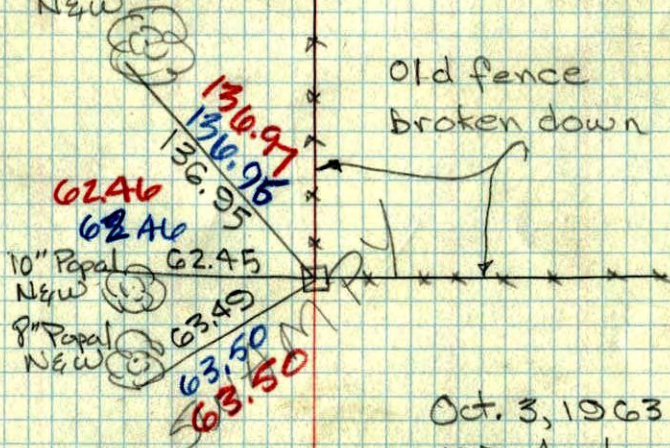
TEMPERATURE CORRECTED
AND HORIZONTALLY
TAPED MEASUREMENTS

ROLAND W. ANDERSON
COUNTY SURVEYOR
ANOKA COUNTY, MINNESOTA

N.E. Cor. Sec. 16-33-25

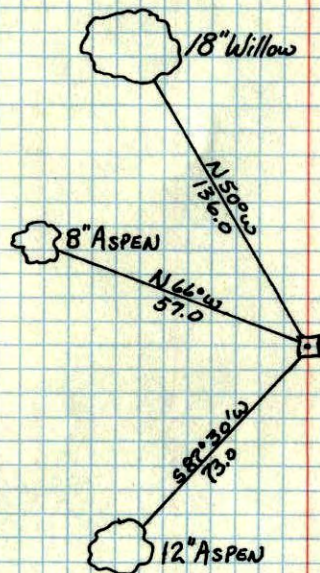
found 4" x 4" Conc. up 0.6'

20" Willow
New



Oct. 3, 1963
M.D. Anderson
Gene Madson
Temp. 75°
2

4 ✓
N.E. CORNER OF SEC. 16, T 33, R 25
CONCRETE MON.



Retied
Oct 3, 1963
M.D.A.

Aug 18, 1945
CARTWRIGHT