

CERTIFICATE OF LOCATION OF GOVERNMENT CORNER

County of Anoka

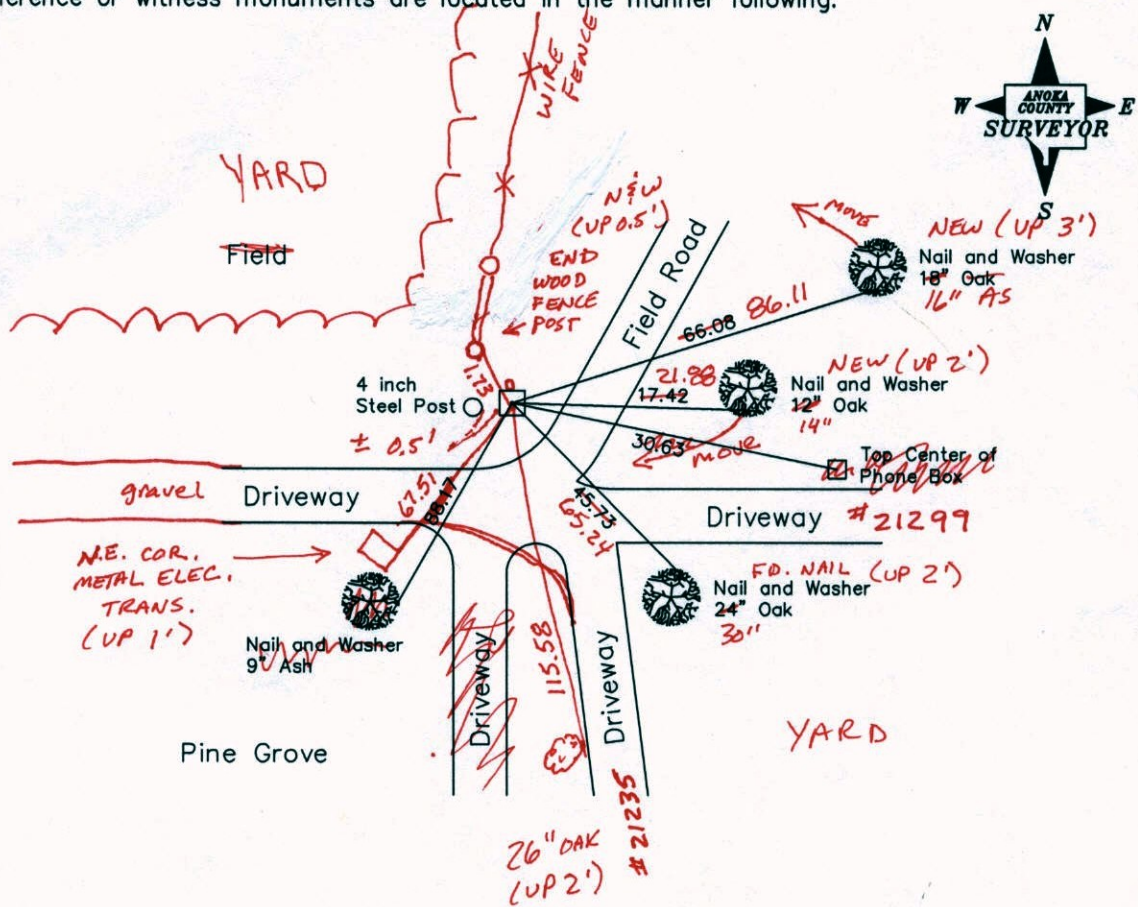
State of Minnesota

North 1/4 Corner of Sec. 16, Township 33, Range 25

I hereby certify that on the 3rd day of October, 1963, I found the described corner which was evidenced by concrete

and I further certify that to perpetuate the location of said corner, I did, at the exact location thereof, place a permanent marker consisting of concrete, 4 inch steel pipe on west side (1/2" iron pipe on N. side)
(mon down 1'±)

which reference or witness monuments are located in the manner following:



10-22-13
BK-SS
T/T

Revised date Revised date

8-23-65	7-8-85
7-16-69	6-23-89
8-7-73	7-11-94
7-22-76	
7-19-79	

N.A.D. 1983 Coordinates
(1996 Adjustment)

County Project Coordinates		State Plane Coordinates	
Northing	217269.9689	Y	
Easting	450187.6769	X	

Date 9-26-02

CERTIFICATE OF LOCATION OF GOVERNMENT CORNER

County of Anoka

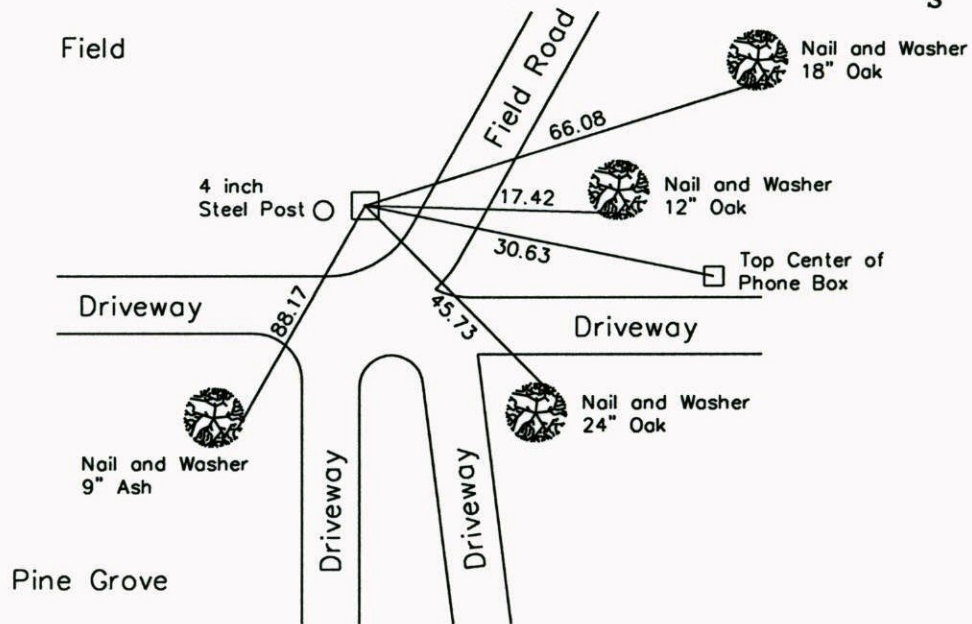
State of Minnesota

North 1/4 Corner of Sec. 16, Township 33, Range 25

I hereby certify that on the 3rd day of October, 1963, I found the described corner which was evidenced by concrete

and I further certify that to perpetuate the location of said corner, I did, at the exact location thereof, place a permanent marker consisting of concrete, 4 inch steel pipe on west side

which reference or witness monuments are located in the manner following:



Revised date Revised date

N.A.D. 1983 Coordinates
(1996 Adjustment)

8-23-65	7-8-85
7-16-69	6-23-89
8-7-73	7-11-94
7-22-76	
7-19-79	

County Project Coordinates	
Northing	<u>217269.9689</u>
Easting	<u>450187.6769</u>

State Plane Coordinates	
Y	_____
X	_____

Date 9-26-02

CERTIFICATE OF LOCATION OF GOVERNMENT CORNER

County of Anoka

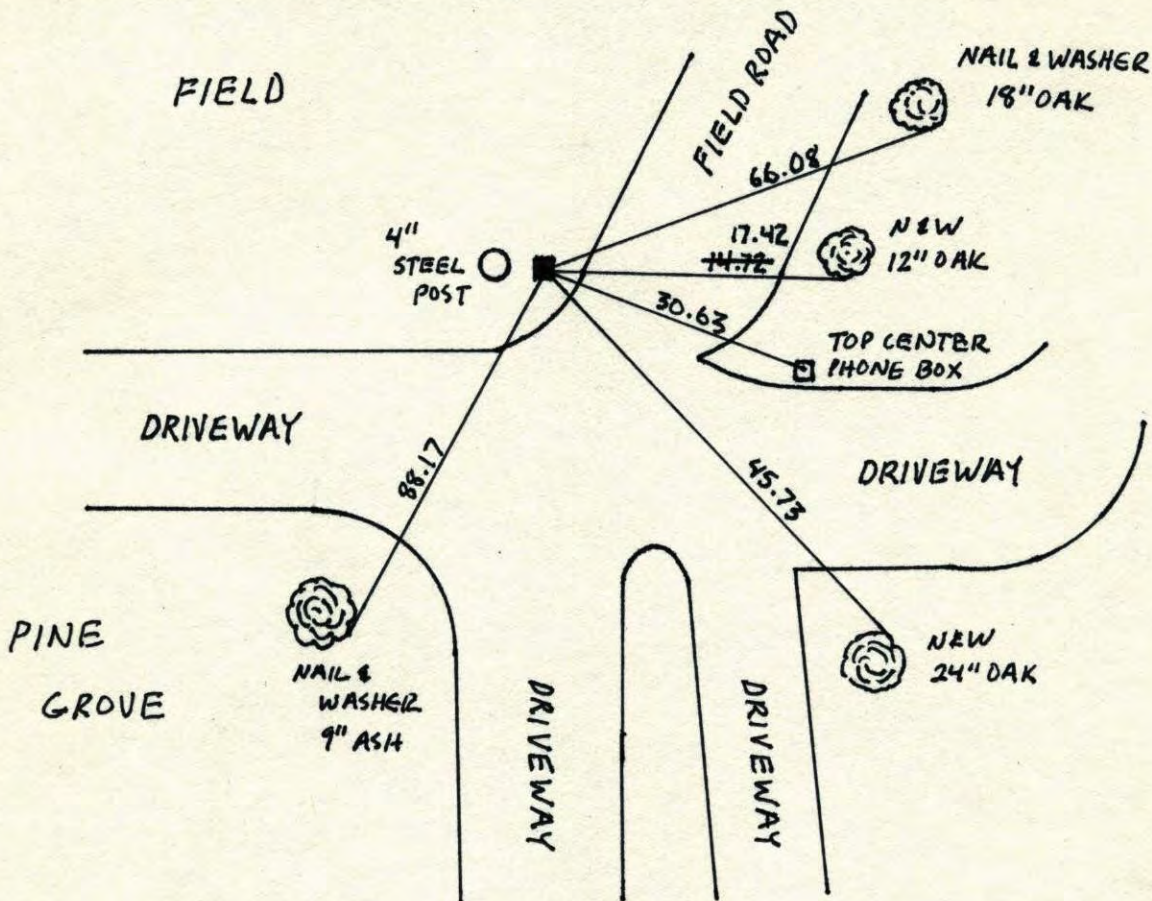
State of Minnesota

N¹/₄ Corner of Sec. 16 Township 33 Range 25

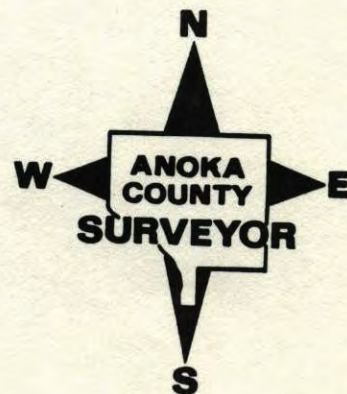
I hereby certify that on the 3 day of OCT., 1963, I found the described corner which was evidenced by CONCRETE

and I further certify that to perpetuate the location of said corner, I did, at the exact location thereof, place a permanent marker consisting of CONCRETE, 4" STEEL PIPE ON WEST SIDE

which reference or witness monuments are located in the manner following:

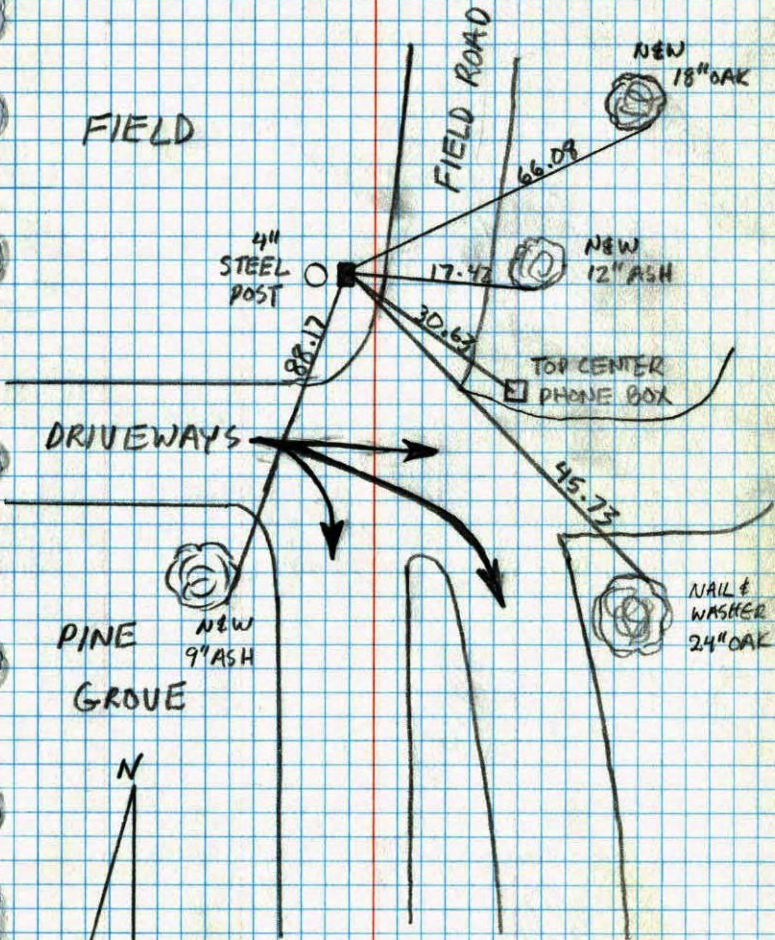


Revised date	Revised date	Revised date
8-23-65	7-11-94	
7-16-69		
8-7-73		
7-22-76		
7-19-79		
7-8-85		
6-23-89		



Page 46
N¹/₄ Sec. 16 T₂.33 R. 25

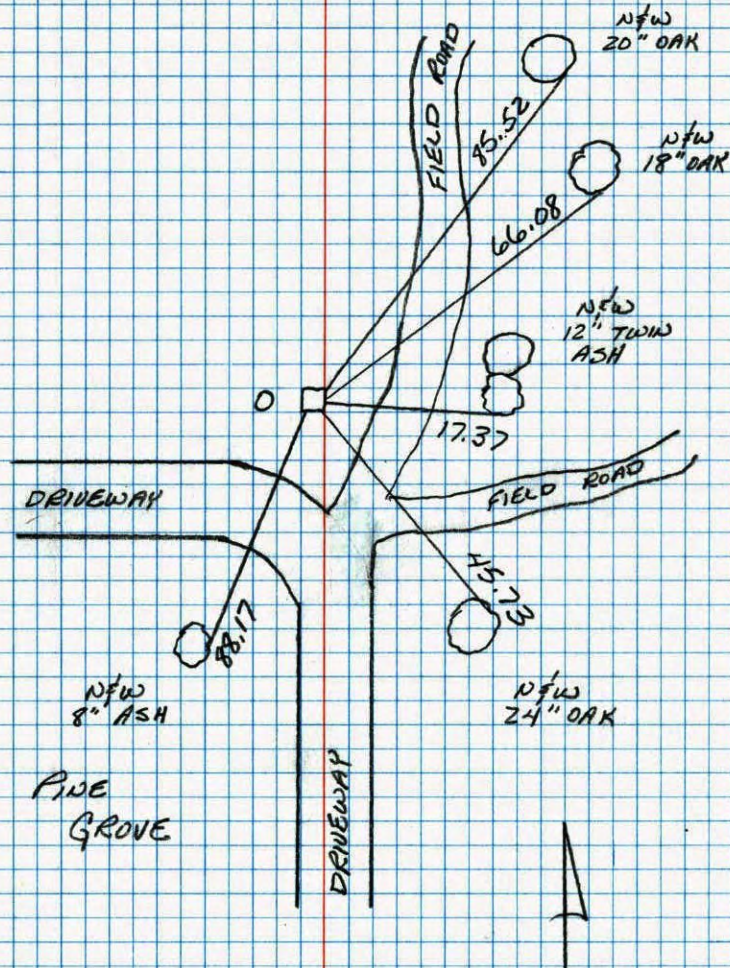
RETIE CONCRETE MONUMENT



JOSH AND JAYME ANDERSON

46

NORTH ¹/₄ CORNER SEC 16 T33 R25
RETIED CONCRETE MONUMENT. 4" DIA.
STEEL PIPE .5' WEST OF MONUMENT



6-23-89
GUETZKO
STEVENSON
ZIMMERMAN

N¹/₄ Cor. Sec. 16-33-25

found Conc. Monument

Down 15"

placed 1/2 inch Iron pipe on N. Side

12" Elm Nail & Washer
Up 7 1/2"
(DEAD)

~~Placed broken off
Cast Iron Monument
on top of Concrete
flush with ground.
7/16/89~~

15" Oak
Nail & Washer

10" Twin
Hickory
Nail & Washer

17" Oak
Nail & Washer

TIE CHECK
8-4-82
P. ROSS
P. HORNBY

Oct. 3, 1963

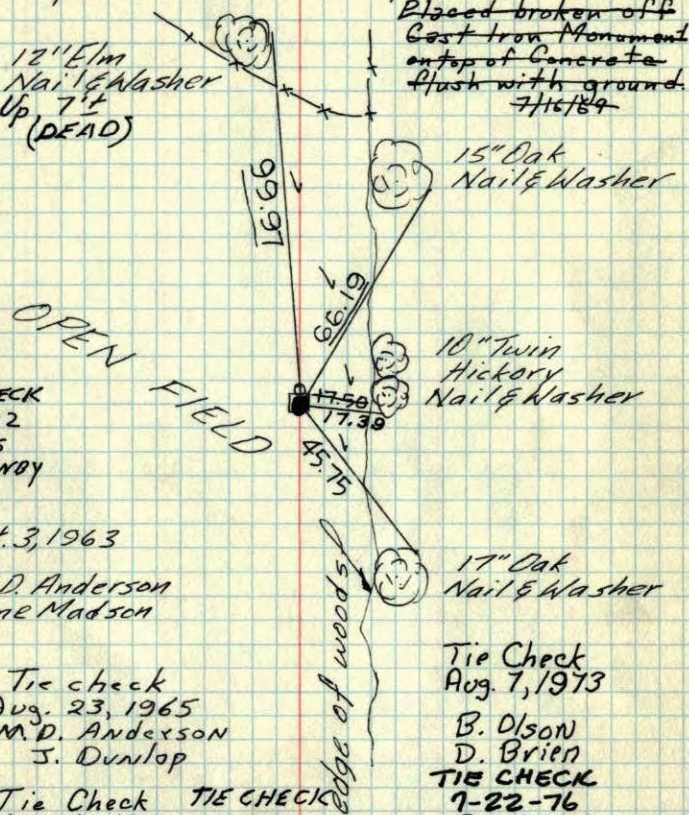
M. D. Anderson
Gene Madson

Tie check
Aug. 23, 1965
M. D. Anderson
J. Dunlop

Tie Check TIE CHECK
July 16, 1969 7-19-79
D. Powell B. STEPHENS
R. Olson D. STEPHENS
B. Olson P. Ross

TEMPERATURE CORRECTED
AND HORIZONTALLY
TAPED MEASUREMENTS

ROLAND W. ANDERSON
COUNTY SURVEYOR
ANOKA COUNTY, MINNESOTA

N¹/₄ Cor. Sec. 16-33-25

found Conc. Monument

Down 15"

placed 1/2 inch Iron pipe on N. Side

12" Elm
Nail & Washer
Up 7 1/2"

15" Oak
Nail & Washer

10" Twin
Hickory
Nail & Washer

17" Oak
Nail & Washer

Oct. 3, 1963

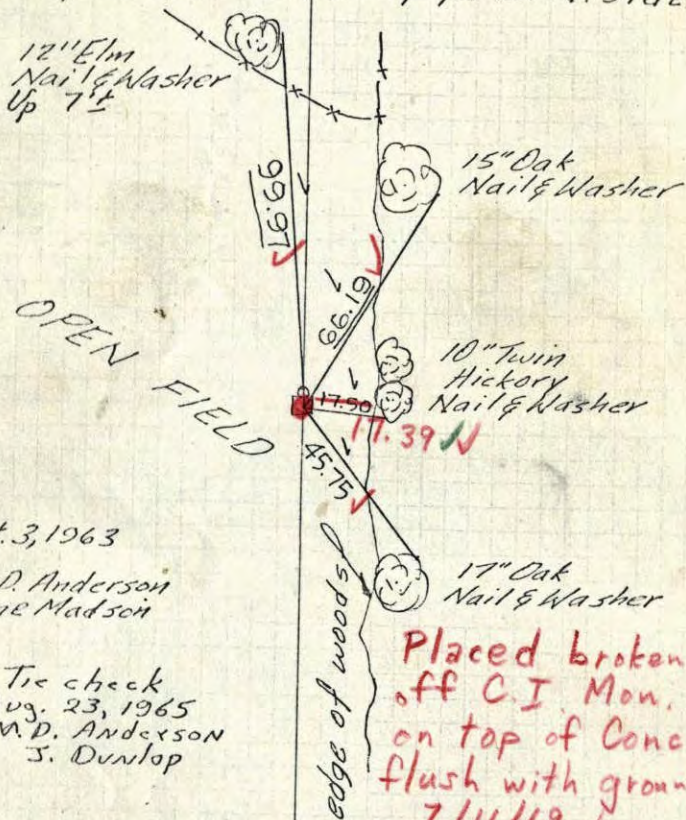
M. D. Anderson
Gene Madson

Tie check
Aug. 23, 1965
M. D. Anderson
J. Dunlop

Placed broken
off C.I. Mon.
on top of Conc.
flush with ground.
7/16/89
#5-80
D. Powell
R. Olson
B. Olson

TEMPERATURE CORRECTED
AND HORIZONTALLY
TAPED MEASUREMENTS

ROLAND W. ANDERSON
COUNTY SURVEYOR
ANOKA COUNTY, MINNESOTA



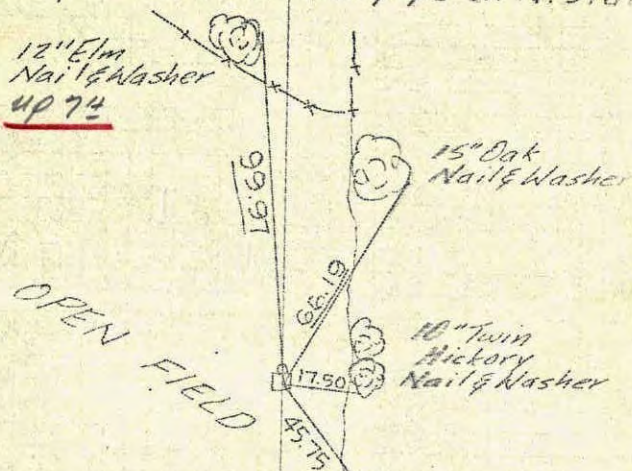
11
N 1/4 Cor. Sec. 16-33-25

found Conc. Monument

Down 15"

placed 1/2 inch Iron pipe on N. Side

12" Elm
Nail & Washer
up 74



Oct. 3, 1963

M. D. Anderson
Gene Madson

~~All ties O.K.~~
tie check

Aug. 23, 1965

M. D. Anderson

J. Dunlop

TEMPERATURE CORRECTED
AND HORIZONTALLY
TAPED MEASUREMENTS

ROLAND W. ANDERSON
COUNTY SURVEYOR
ANOKA COUNTY, MINNESOTA

N 1/4 Sec. 16-33-25

found Conc.
down 15"

placed Iron pipe
on N side

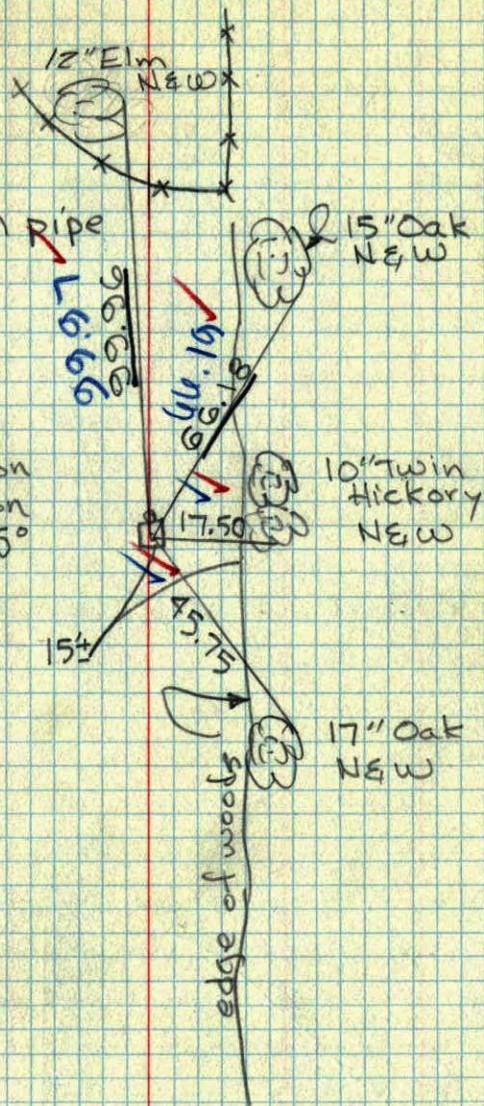
Oct 3, 1963

M. D. Anderson

Gene Madson

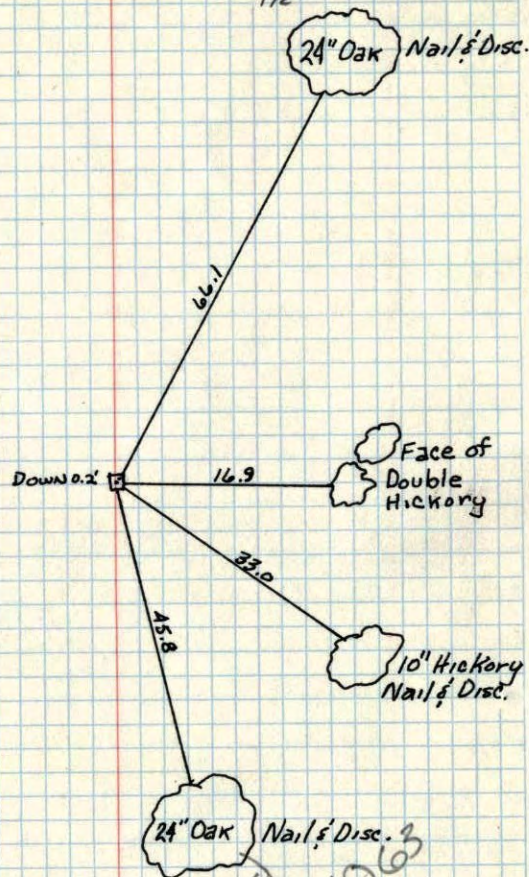
Temp. 65°

#2



5 ✓
N 1/4 CORNER OF SEC. 16, T 33, R 25

CONC. Man. Down $1\frac{1}{2}$ '

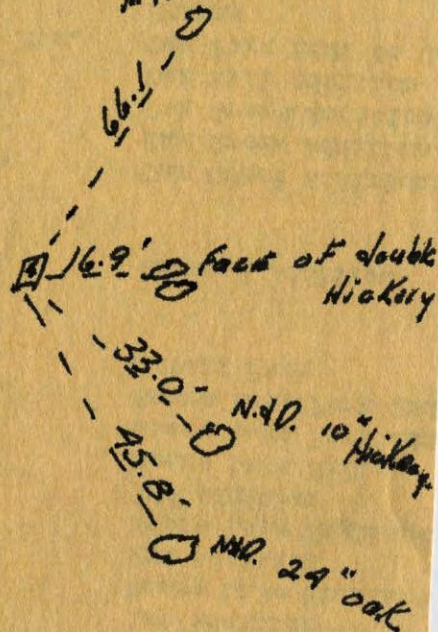


Retired
Oct. 3, 1956
M.D.

Apr. 17, 1956
C. Hwy. Dept.

N 1/4 Cor. sec. 16 + 33 R 25
Con. Man. Imp. $1\frac{1}{2}$ " below surface
uncovered 4-17-56

N 1/4 24" oak



N 1/4 Cor. 16, 33-25

4-17-56
Hwy. Dept

