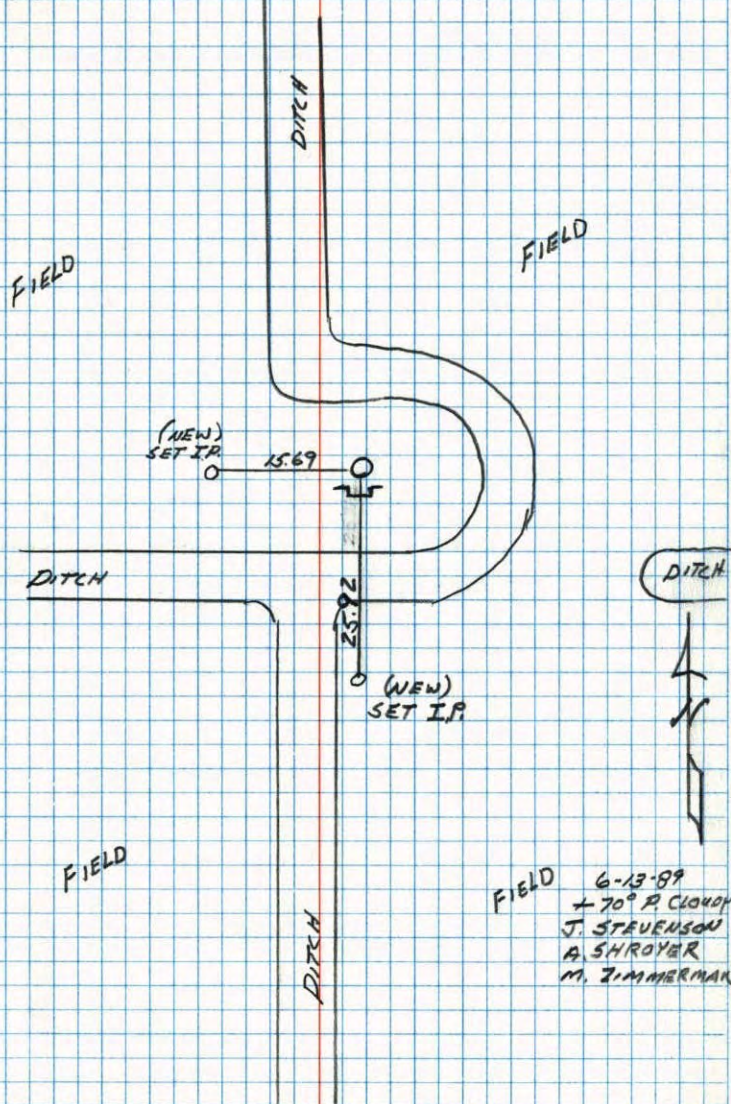


NORTH 1/4 CORNER SEC. 18, TWP 33 R. 25

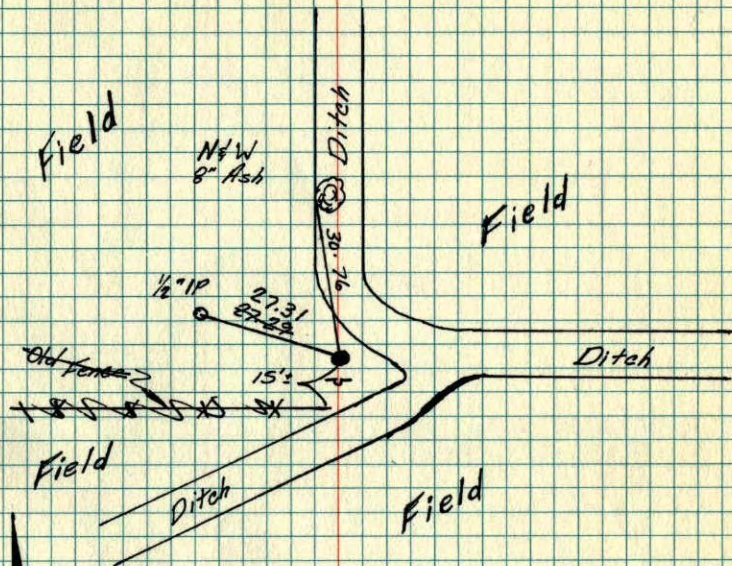
RETIRED CAST IRON MONUMENT, SIGN & POST ON SO. SIDE



FIELD 6-13-89
 + 70° P. CLOUDY
 J. STEVENSON
 A. SHROYER
 M. ZIMMERMAN

N 1/4 Cor Sec. 18 - T33 - R25

Set Cast Iron Monument From Area Resurvey
 Cast Iron Flush With Sign Post On South
 Side.



9-4-75

H. Larson
 J. Boettcher
 D. Pearson

TIE CHECK

7-19-79
 B. STEPHENS
 D. STEPHENS
 P. ROSS

TIE CHECK

7-22-76
 G. ADAMS
 S. BRIEN
 J. STEPHENS

TIE CHECK

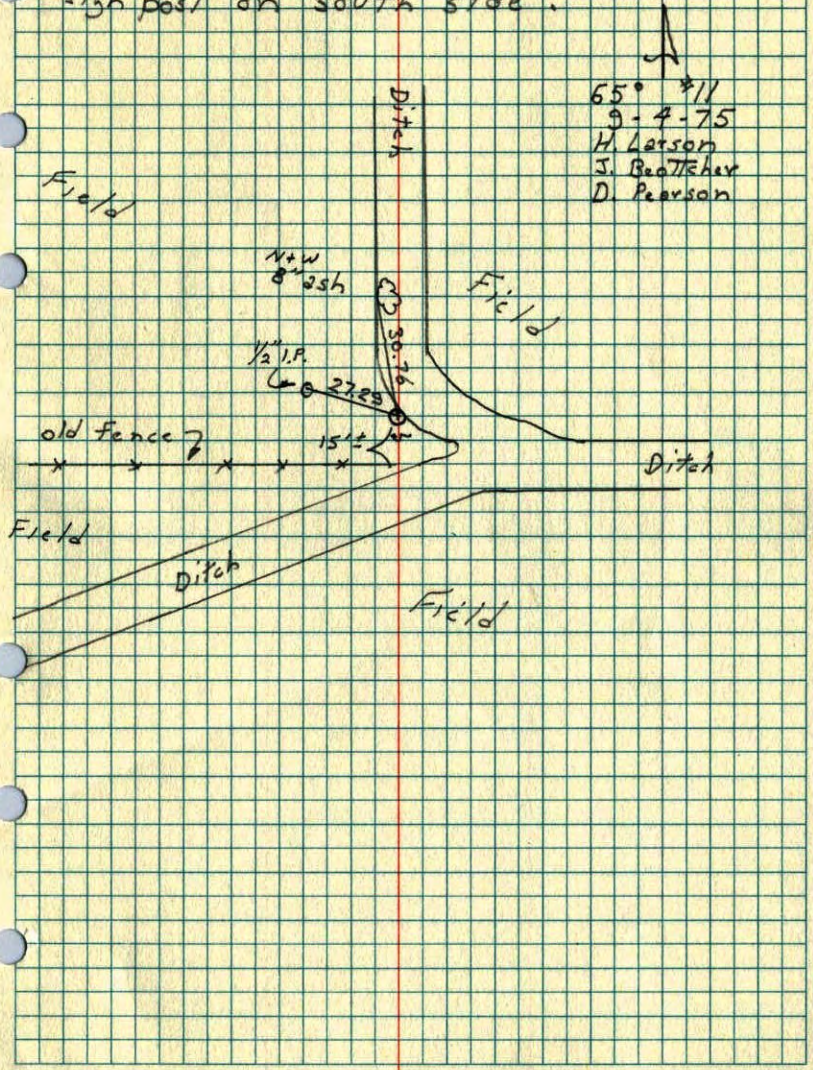
8-4-82
 P. ROSS
 P. HURNEY

TEMPERATURE CORRECTED
 AND HORIZONTALLY
 TAPED MEASUREMENTS

ROLAND W. ANDERSON
 COUNTY SURVEYOR
 ANOKA COUNTY, MINNESOTA

N 1/4 Cor. Sec. 18 T33 R25

Set cast iron monument from
area resurvey. E.I. flush with
sigh post on south side.



65° 11'
9-4-75
H. Larson
J. Beutcher
D. Pearson