

CERTIFICATE OF LOCATION OF GOVERNMENT CORNER

County of Anoka

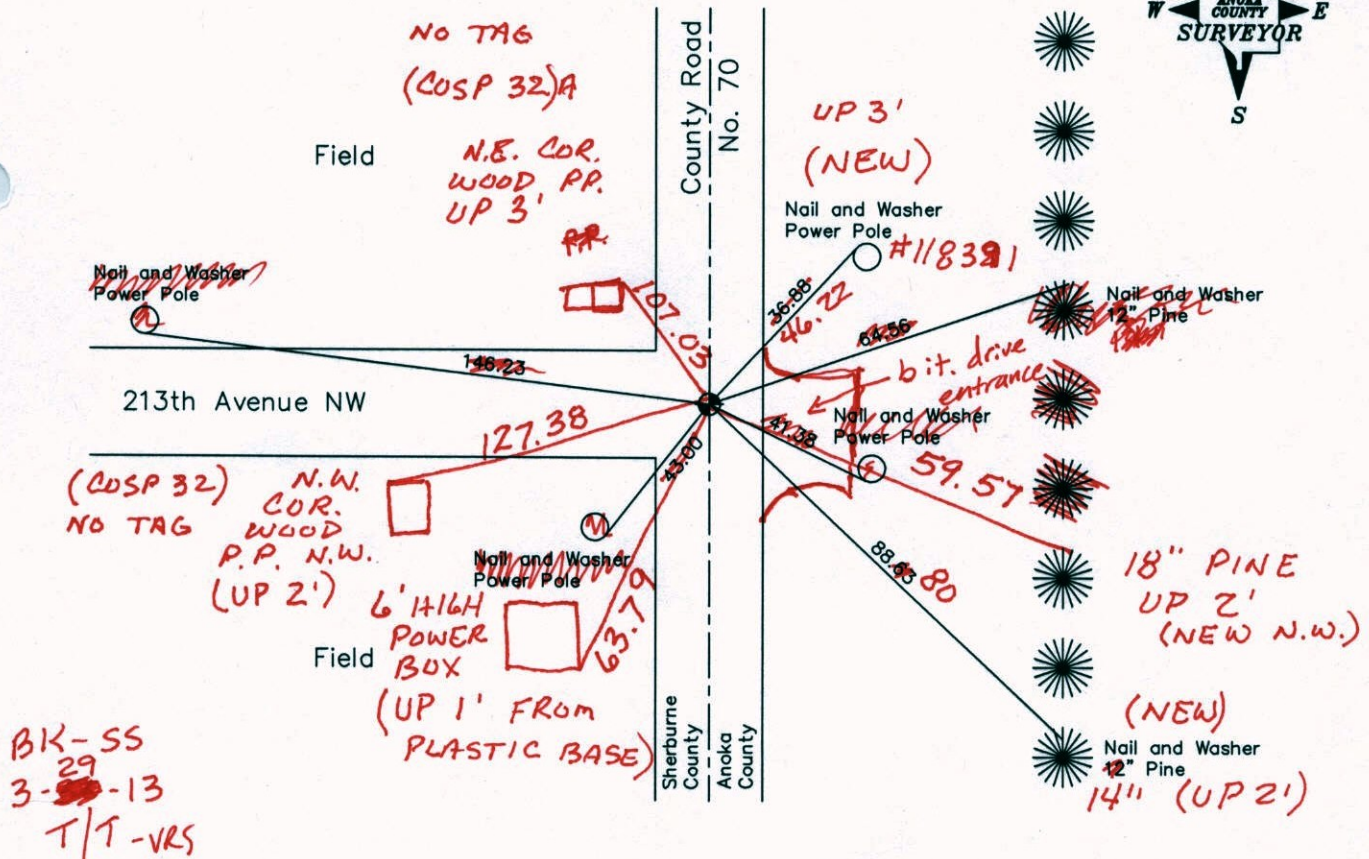
State of Minnesota

Southwest Corner of Sec. 7, Township 33, Range 25

I hereby certify that on the 15th day of January, 1964, I found the described corner which was evidenced by a cast iron monument from Sherburne County ties

and I further certify that to perpetuate the location of said corner, I did, at the exact location thereof, place a permanent marker consisting of a cast iron monument on F-F

which reference or witness monuments are located in the manner following:



BK-SS
29
3-~~13~~-13
T/T-VRS

Revised date Revised date

8-9-65	7-30-82
7-8-69	7-8-85
7-23-73	8-24-88
7-22-76	7-29-94
7-10-79	

N.A.D. 1983 Coordinates
(1996 Adjustment)

County Project Coordinates		State Plane Coordinates	
Northing	217444.1265	Y	_____
Easting	437398.2391	X	_____

Date 9-26-02

3D = 0.05

N = 217444.1365

E = 437398.2158

CERTIFICATE OF LOCATION OF GOVERNMENT CORNER

County of Anoka

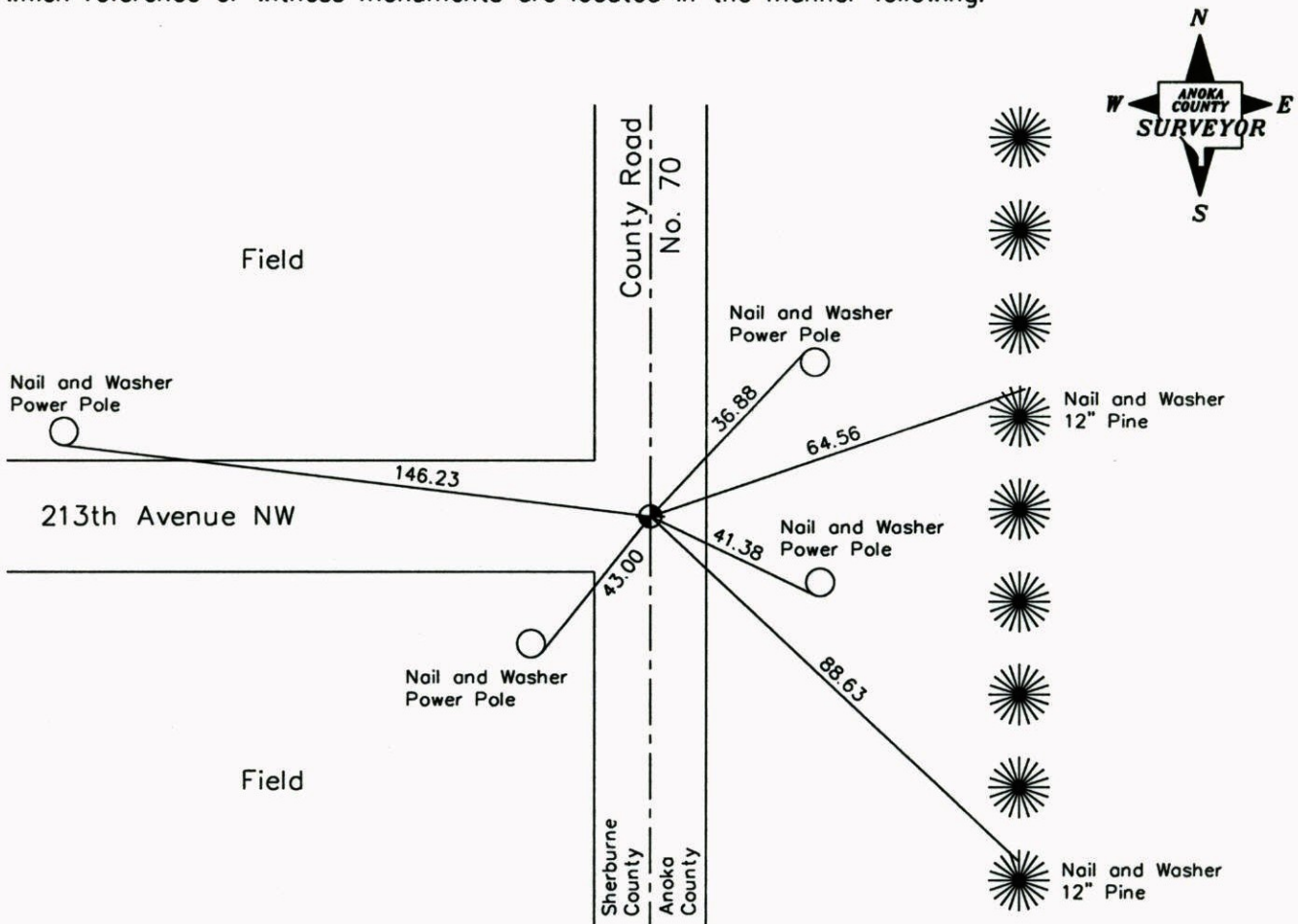
State of Minnesota

Southwest Corner of Sec. 7, Township 33, Range 25

I hereby certify that on the 15th day of January, 1964, I found the described corner which was evidenced by a cast iron monument from Sherburne County ties

and I further certify that to perpetuate the location of said corner, I did, at the exact location thereof, place a permanent marker consisting of a cast iron monument

which reference or witness monuments are located in the manner following:



Revised date Revised date

8-9-65	7-30-82
7-8-69	7-8-85
7-23-73	8-24-88
7-22-76	7-29-94
7-10-79	

N.A.D. 1983 Coordinates
(1996 Adjustment)

County Project Coordinates	State Plane Coordinates
Northing <u>217444.1265</u>	Y _____
Easting <u>437398.2391</u>	X _____

Date 9-26-02

CERTIFICATE OF LOCATION OF GOVERNMENT CORNER

County of Anoka

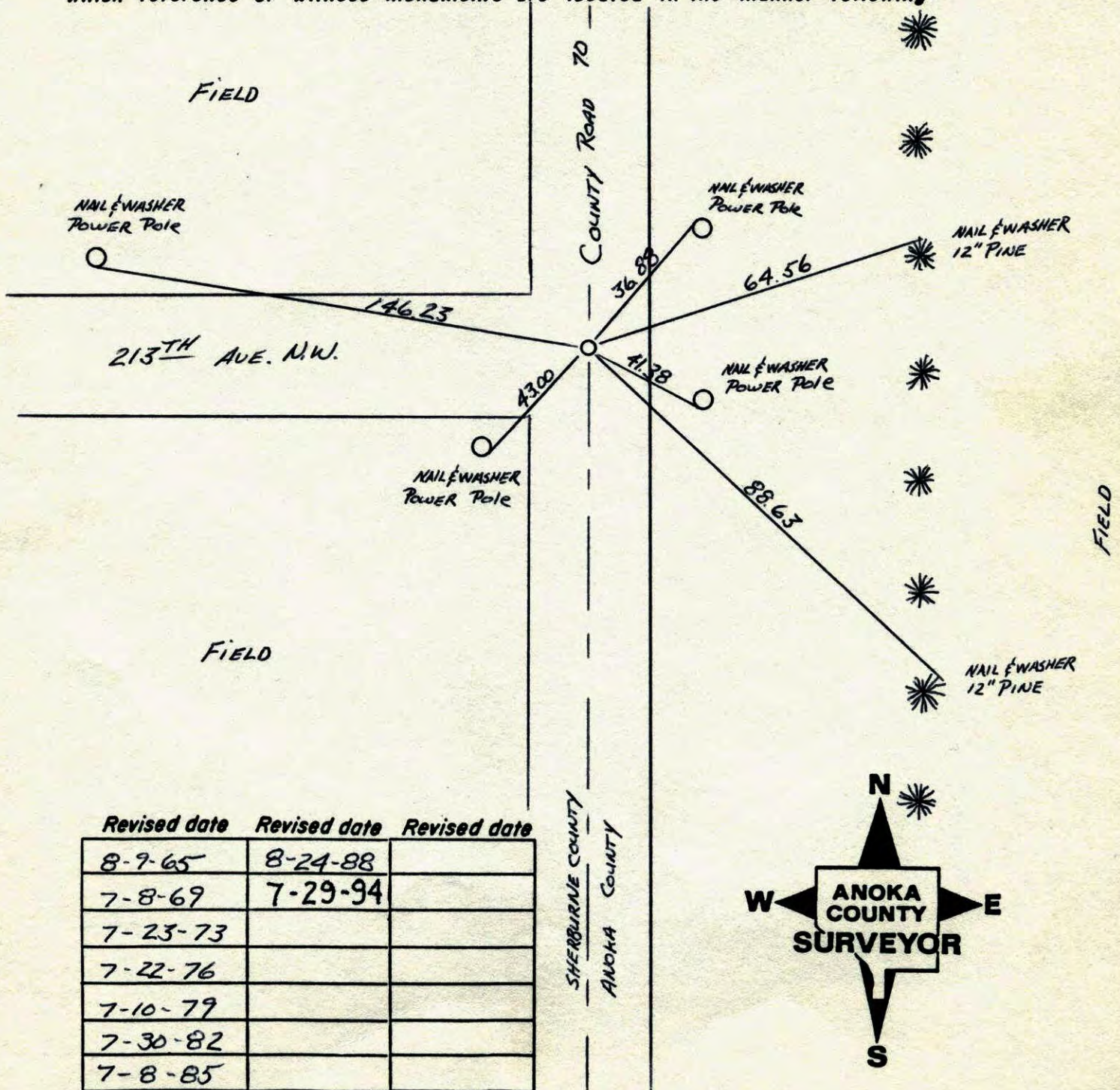
State of Minnesota

SOUTHWEST Corner of Sec. 7 Township 33 Range 25

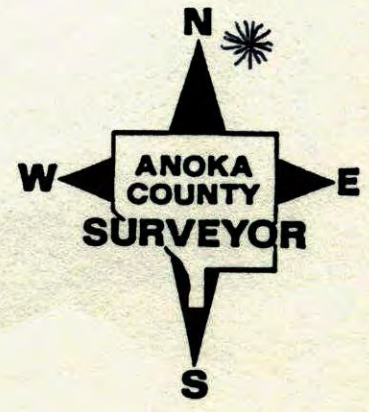
I hereby certify that on the 15TH day of JANUARY, 1964, I found the described corner which was evidenced by CAST IRON FROM SHERBURNE CO. TIES

and I further certify that to perpetuate the location of said corner, I did, at the exact location thereof, place a permanent marker consisting of CAST IRON MONUMENT

which reference or witness monuments are located in the manner following:

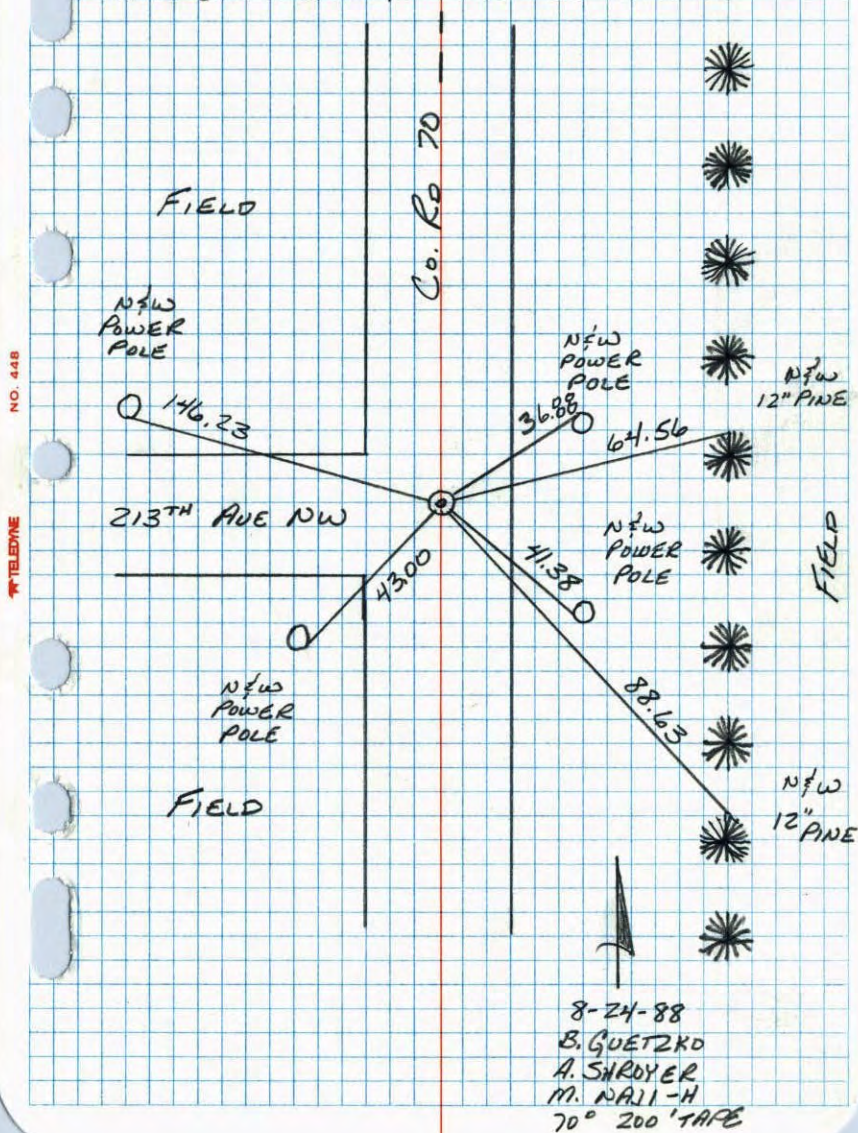


Revised date	Revised date	Revised date
8-9-65	8-24-88	
7-8-69	7-29-94	
7-23-73		
7-22-76		
7-10-79		
7-30-82		
7-8-85		



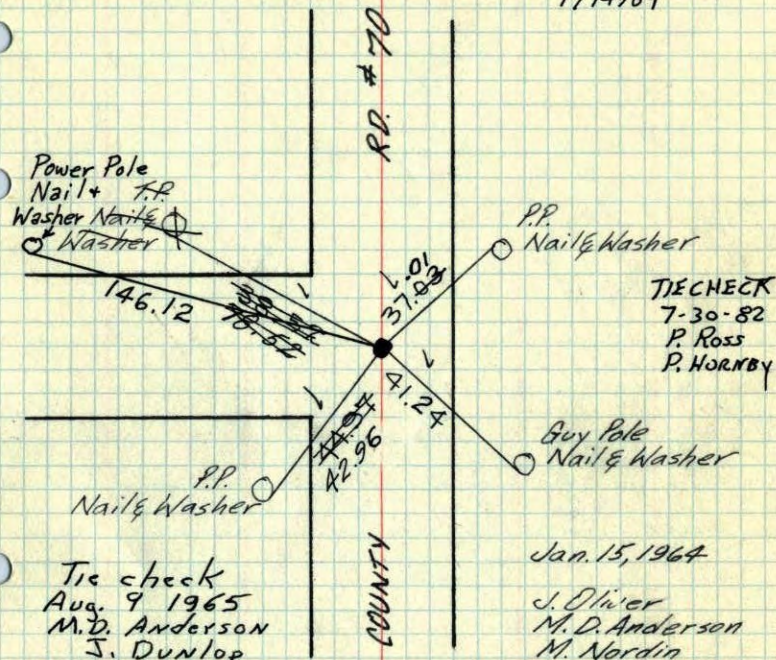
SOUTHWEST CORNER SEC 7- T33 R25

REPLACED AND RETIED CAST IRON MONUMENT
SHERBURNE COUNTY ANOKA COUNTY



S.W. Cor. Sec. 7-T33, R25

found Sherburne County Cast Iron Monument from their ties. ~~Down 0.5'~~ East
Set P.K. spikes 2.00' North & 2.00' ~~South~~
Replaced old Cast Iron with new Cast Iron Monument flush. 7/14/69



Tie check
Aug. 9 1965
M. D. Anderson
J. Dunlop

Tie Check
July 8 1969
R. A. Olson
B. N. Olson
D. Powell

Tie Check
July 23, 1973
B. Olson
D. Brien
D. Farmer

TIE CHECK
7-22-76
G. ADAMS
S. BRIEN
J. STEPHENS

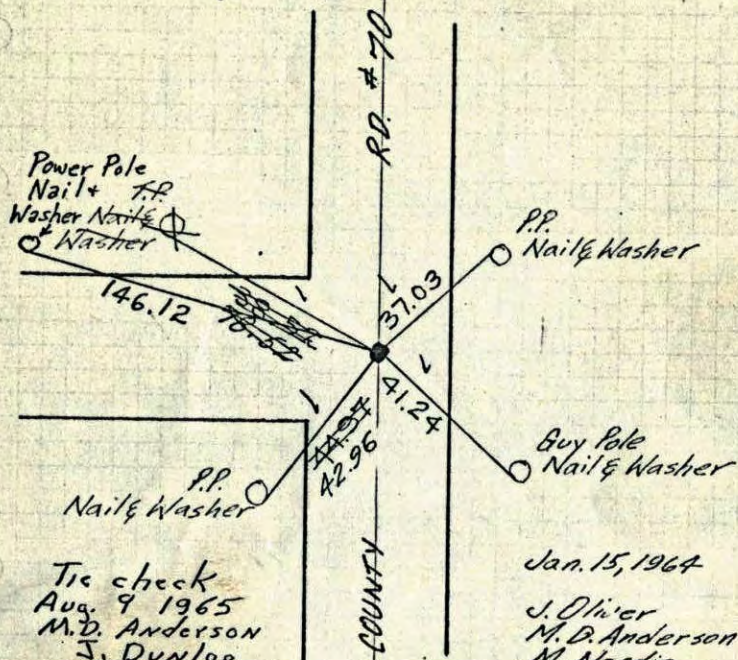
TIECHECK
7-10-79
B. STEPHENS
D. STEPHENS
P. ROSS

ROLAND W. ANDERSON
COUNTY SURVEYOR
ANOKA COUNTY, MINNESOTA
TEMPERATURE CORRECTED
AND HORIZONTALLY
TAPED MEASUREMENTS

16
S.W. Cor. Sec. 7-T33, R25

found ~~Sherburne County Cast Iron~~
Monument from their ties. Down 0.5'

Set P.K. spikes 2.00' North & 2.00' ~~South~~ ^{East}



Tie check
Aug. 9 1965
M.D. Anderson
J. Dunlop

Tie Check
July 8, 1969
R.A. Olson
B.N. Olson

Removed ^{solid} Anoka
Co. C.I. & replaced
with removeable
flush.
7/14/69
DP

ROLAND W. ANDERSON
COUNTY SURVEYOR
ANOKA COUNTY, MINNESOTA
TEMPERATURE CORRECTED
AND HORIZONTALLY
TAPED MEASUREMENTS

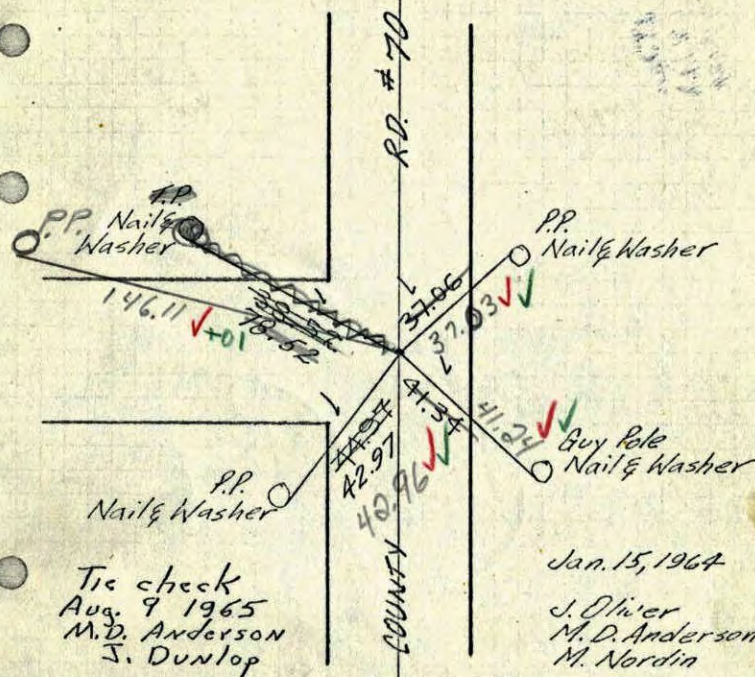
Jan. 15, 1964

J. Oliver
M.D. Anderson
M. Nordin

16
S.W. Cor. Sec. 7-T33, R25

found ~~Sherburne County Cast Iron~~
Monument from their ties. Down 0.5'

Set P.K. spikes 2.00' North & 2.00' ~~South~~ ^{East}



Tie check
Aug. 9 1965
M.D. Anderson
J. Dunlop

7-8-69

Temp 72° ✓
Tape #5 ✓
R.A. Olson
B.N. Olson

C.I. To be Raised

ROLAND W. ANDERSON
COUNTY SURVEYOR
ANOKA COUNTY, MINNESOTA
TEMPERATURE CORRECTED
AND HORIZONTALLY
TAPED MEASUREMENTS

Jan. 15, 1964

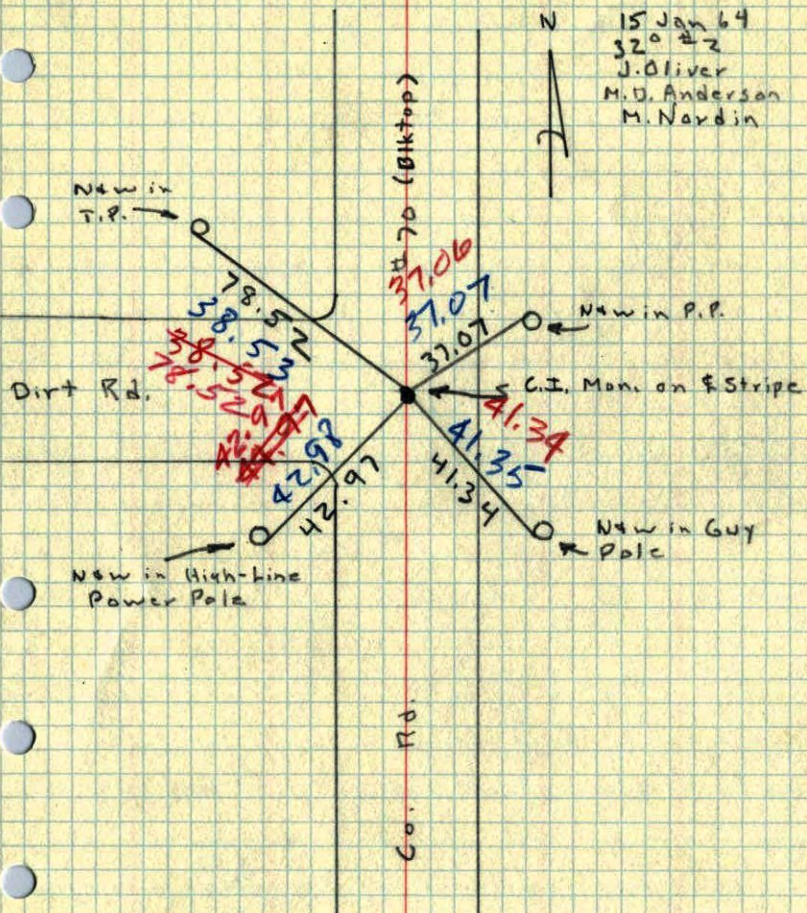
J. Oliver
M.D. Anderson
M. Nordin

SW

T 33

~~SW~~ Cor. Sec. 7, T 34, R 25

Found Sherburne Co. East Iron Monument
down 0.5' from Sherburne Co. Highway Dept.
Ties, Set PK Spk's 2.00' North and East.



NE 13, 33, 26

C.I. Mon

T.P. N 63° W 78.4
 P.P. N 48° E 37.31
 P.P. S 22°-30' E 105.21

Sherburne Co. Highway Dept