

CERTIFICATE OF LOCATION OF GOVERNMENT CORNER

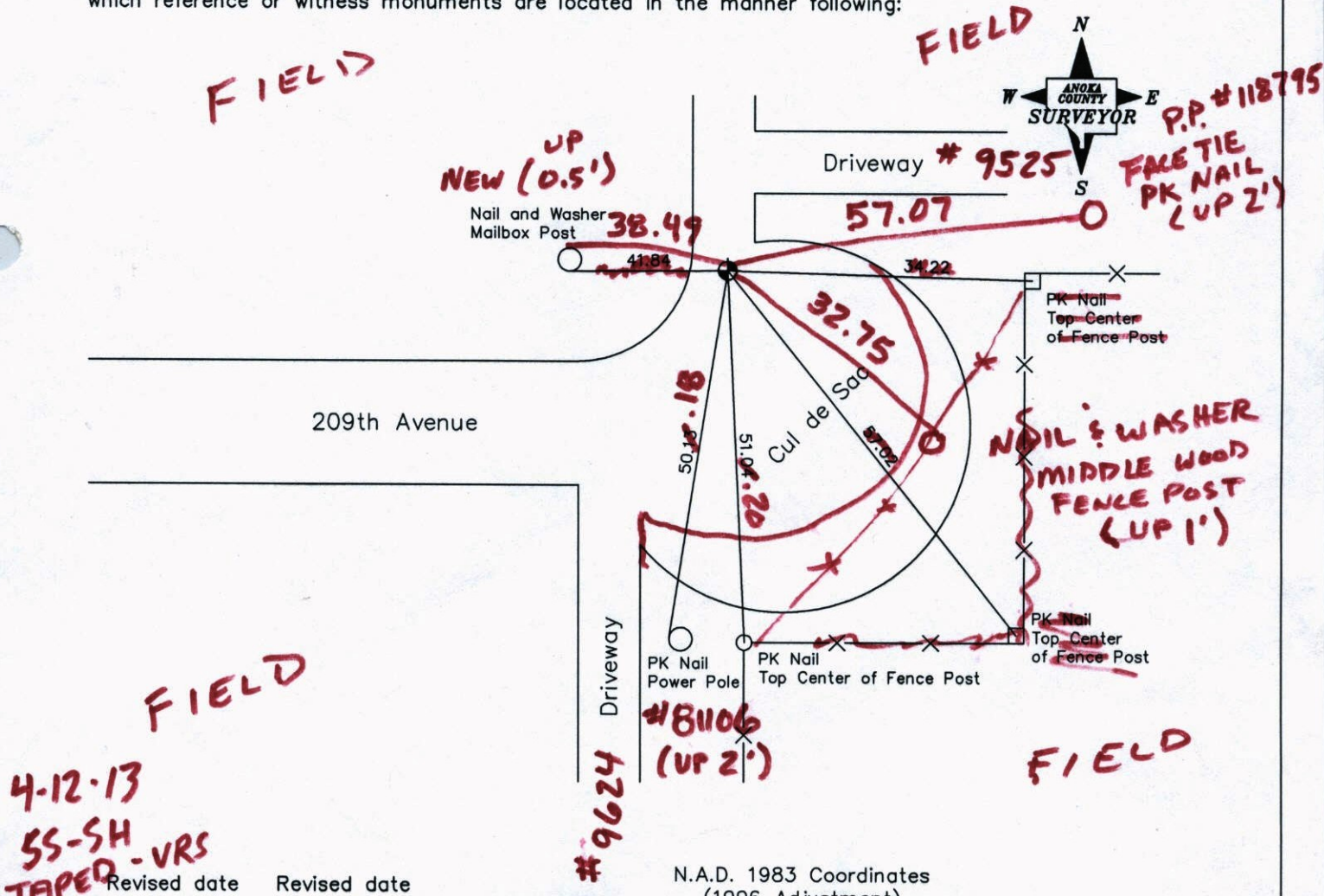
County of Anoka State of Minnesota

West 1/4 Corner of Sec. 18, Township 33, Range 25

I hereby certify that on the 7th day of July, 1961, I found the described corner which was evidenced by a square top stone (by Sherburne County Surveyors)

and I further certify that to perpetuate the location of said corner, I did, at the exact location thereof, place a permanent marker consisting of a cast iron monument (SHERBURNE CO.)

which reference or witness monuments are located in the manner following:



4-12-13
SS-SH
TAPER - VRS

Revised date	Revised date
7-22-76	7-29-94
7-10-79	
2-22-83	
7-8-85	
8-23-88	

County Project Coordinates		State Plane Coordinates	
Northing	214804.8717	Y	_____
Easting	437381.3272	X	_____

Date 9-26-02

VAS3D Q = 0.04 N = 214804.8510 E = 437381.2380

CERTIFICATE OF LOCATION OF GOVERNMENT CORNER

County of Anoka

State of Minnesota

West 1/4 Corner of Sec. 18, Township 33, Range 25

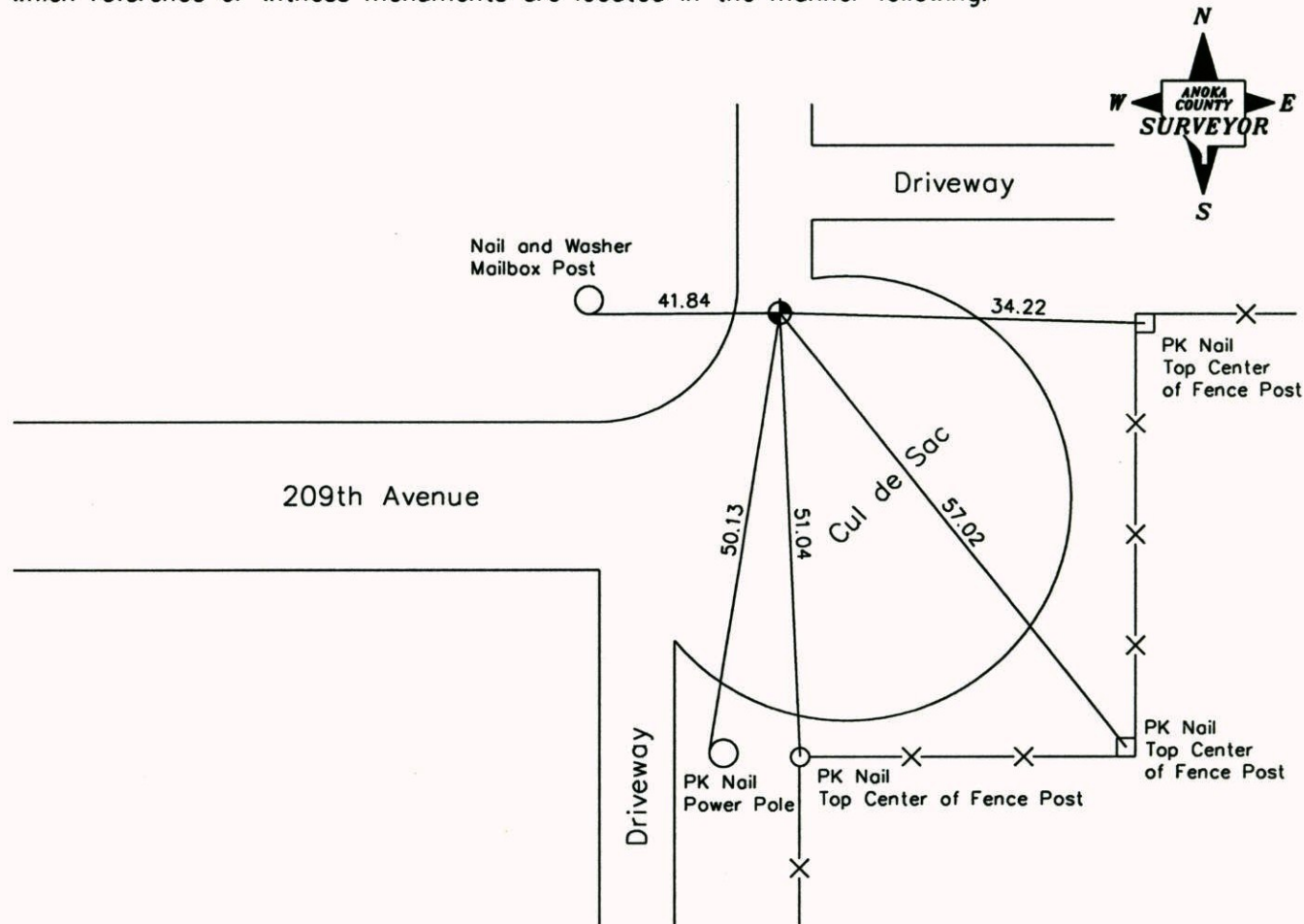
I hereby certify that on the 7th day of July, 1961, I found the described corner which was

evidenced by a square top stone (by Sherburne County Surveyors)

and I further certify that to perpetuate the location of said corner, I did, at the exact location

thereof, place a permanent marker consisting of a cast iron monument

which reference or witness monuments are located in the manner following:



Revised date Revised date

7-22-76	7-29-94
7-10-79	
2-22-83	
7-8-85	
8-23-88	

N.A.D. 1983 Coordinates
(1996 Adjustment)

County Project Coordinates	State Plane Coordinates
Northing <u>214804.8717</u>	Y _____
Easting <u>437381.3272</u>	X _____

Date 9-26-02

CERTIFICATE OF LOCATION OF GOVERNMENT CORNER

County of Anoka

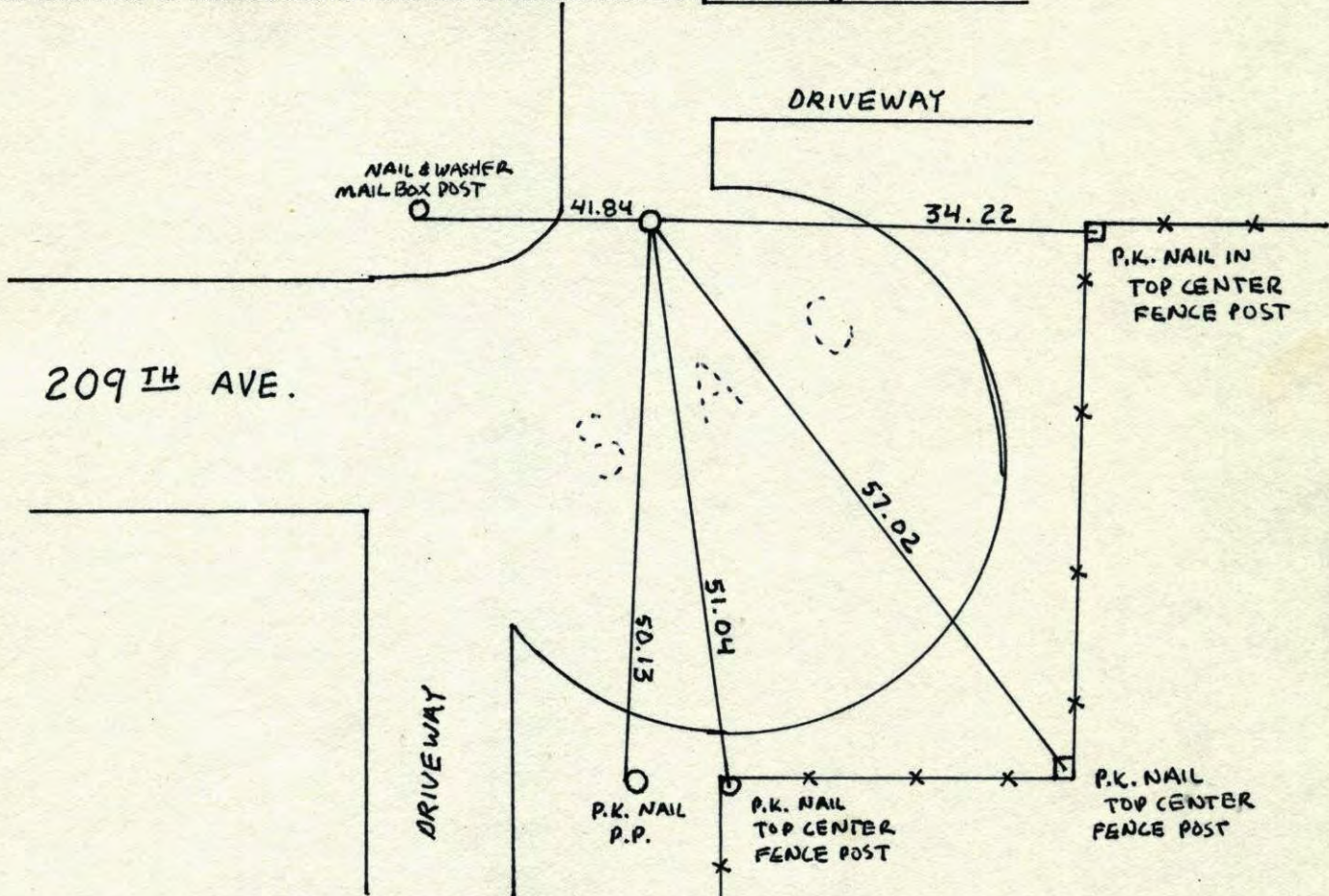
State of Minnesota

WEST 1/4 Corner of Sec. 18 Township 33 Range 25

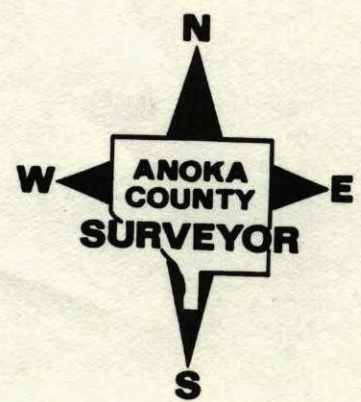
I hereby certify that on the 7th day of JULY, 19 61, I found the described corner which was evidenced by SQUARE TOP STONE (BY SHERBURNE COUNTY SURVEYORS)

and I further certify that to perpetuate the location of said corner, I did, at the exact location thereof, place a permanent marker consisting of CAST IRON MONUMENT

which reference or witness monuments are located in the manner following:

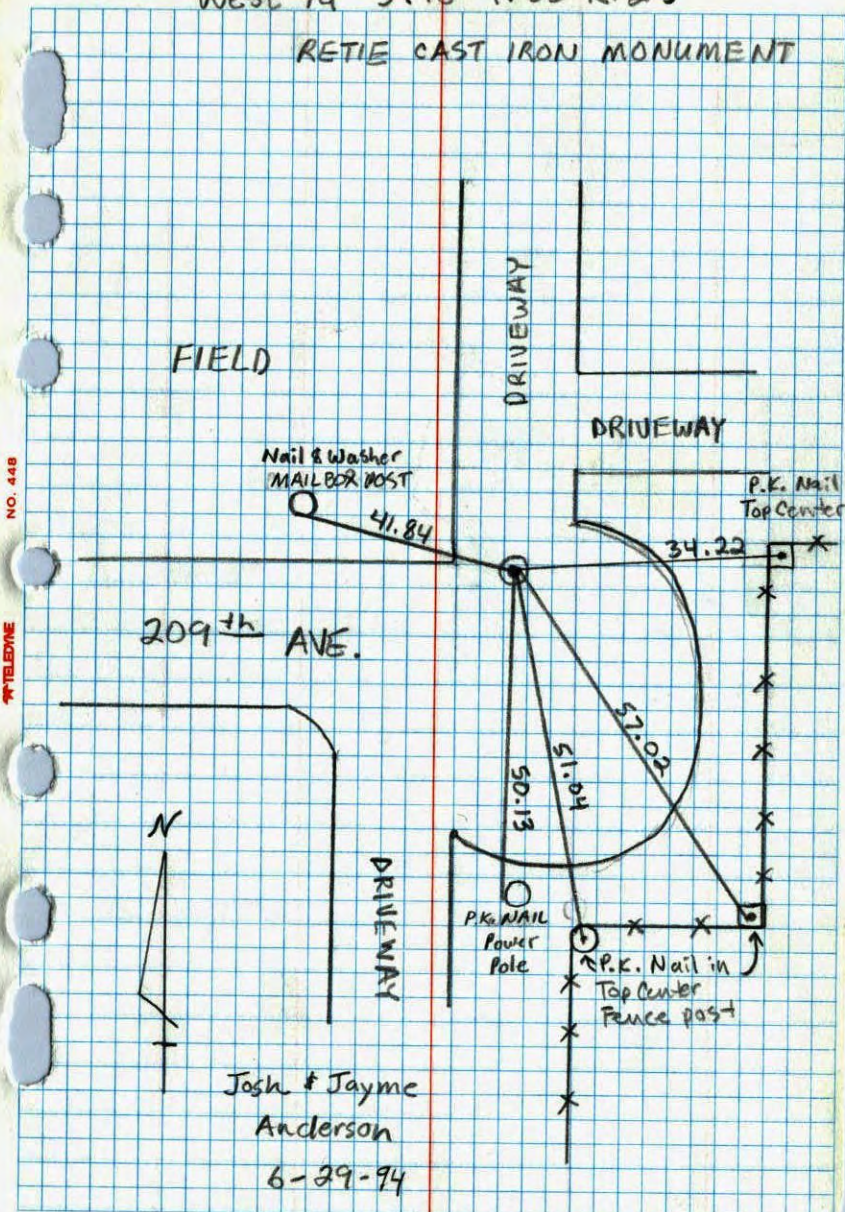


Revised date	Revised date	Revised date
7-22-76		
7-10-79		
2-22-83		
7-8-85		
8-23-88		
7-29-94		



West 1/4 S. 18 T. 33 R. 25

RETIED CAST IRON MONUMENT



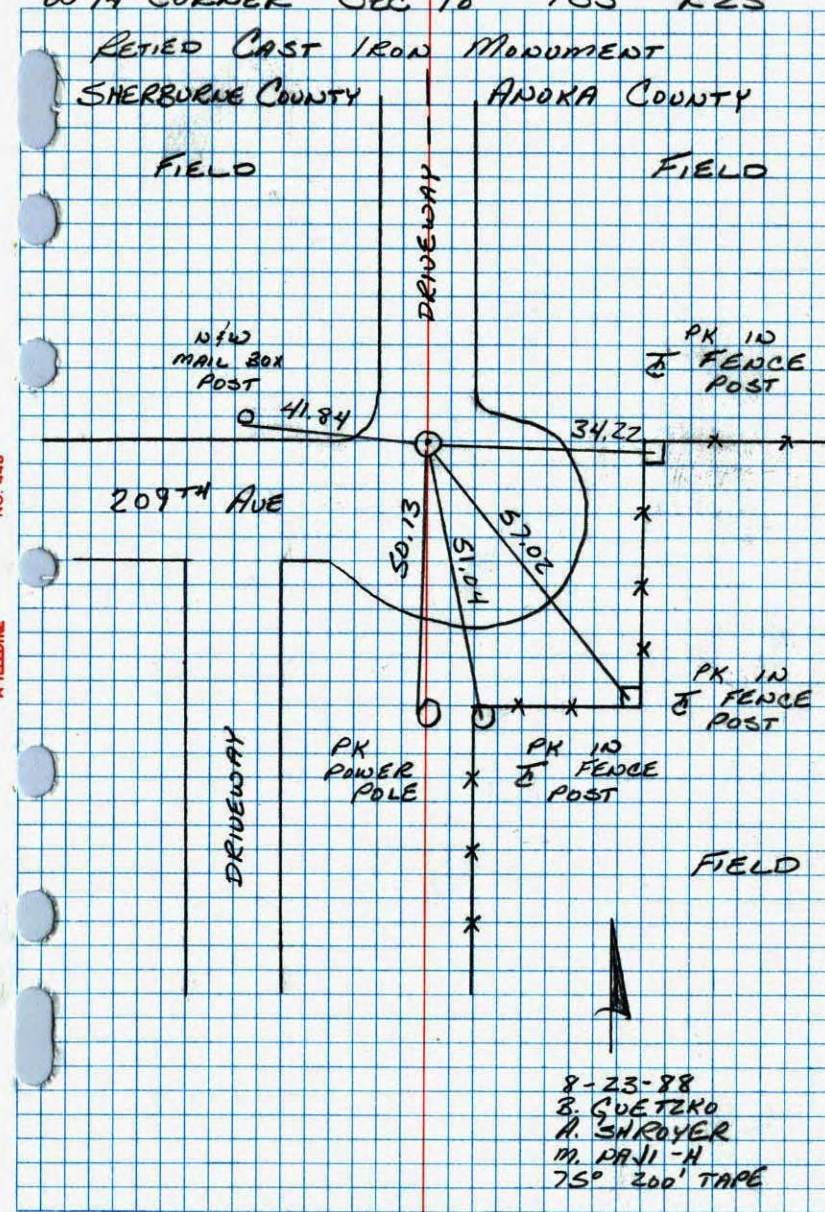
Josh & Jayme
Anderson
6-29-94

W 1/4 CORNER SEC 18 T33 R25

RETIED CAST IRON MONUMENT

SHERBURNE COUNTY

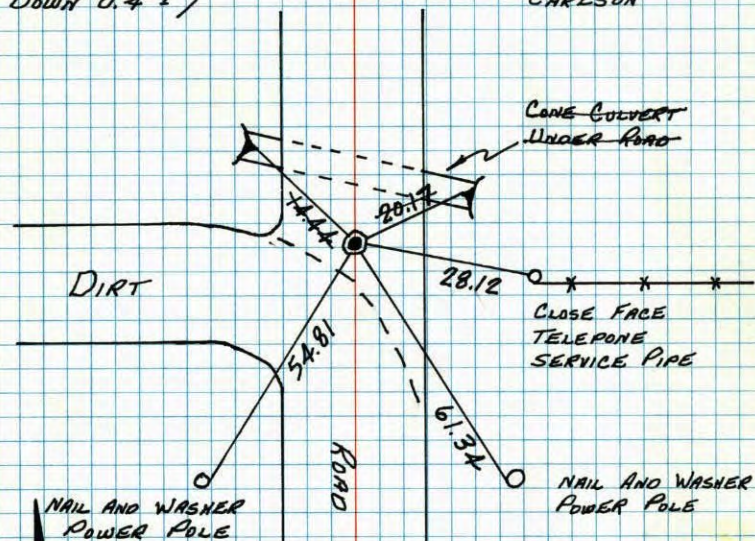
ANDOKA COUNTY



8-23-98
B. GOETZKO
A. SHROYER
M. PRAJ-H
75° 200' TAPE

W 1/4 COR. SEC. 18, T33, R25

FOUND SQUARE TOP STONE AT CORNER, SAID TO BE
CORNER BY FARMER IN AREA. STONE WAS SET BY
SHERBURNE COUNTY SURVEYOR. REPLACED STONE
WITH CAST IRON MONUMENT. CORNER IS 5.5'±
NORTH OF FENCE EXTENSION FROM EAST. 7. JUL 61
FREEMAN
ANDERSON
CARLSON
(MONUMENT IS
DOWN 0.4'±)



TIE CHECK
7-22-76
G. ADAMS
S. BRIEN
J. STEPHENS
REDRAWN
JAN '77
B. GUETZKO

TIE CHECK
7-10-73
B. STEPHENS
D. STEPHENS
P. ROSS

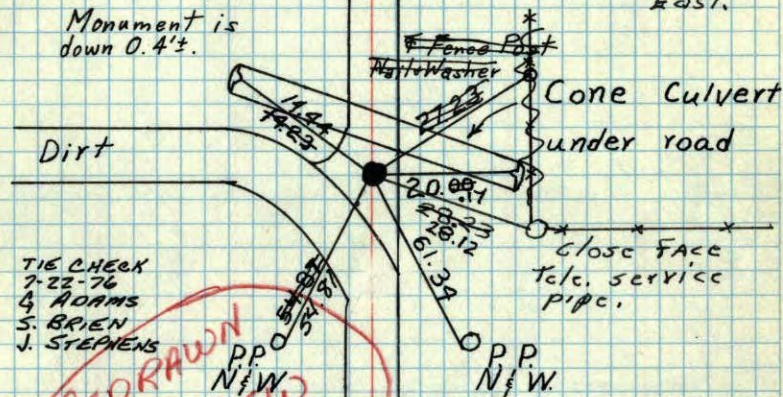
TEMPERATURE CORRECTED
AND HORIZONTALLY
TAPED MEASUREMENTS

ROLAND W. ANDERSON
COUNTY SURVEYOR
ANOKA COUNTY, MINNESOTA

July 7, 1961⁵²
Freeman, Anderson
Carlson
+80°

W 1/4 corner Sec 18, T-33, R-25 Burns

Found square top Stone at Cor-
ner. Said to be corner by far-
mer in area. Stone was set
by Sherburne County Surveyor.
Replaced Stone with cast iron mon.
Cor. is 5.5'± north of fence ext. from
East.
Monument is
down 0.4'±.



TIE CHECK
7-22-76
G. ADAMS
S. BRIEN
J. STEPHENS

Tie check
Aug. 9 1963
M.D. Anderson
J. Dunlop

Tie Check
July 8, 1969
R. A. Olson
B. N. Olson

Tip Check
Aug. 6, 1973
B. Olson
D. Brien

TEMPERATURE CORRECTED
AND HORIZONTALLY
TAPED MEASUREMENTS

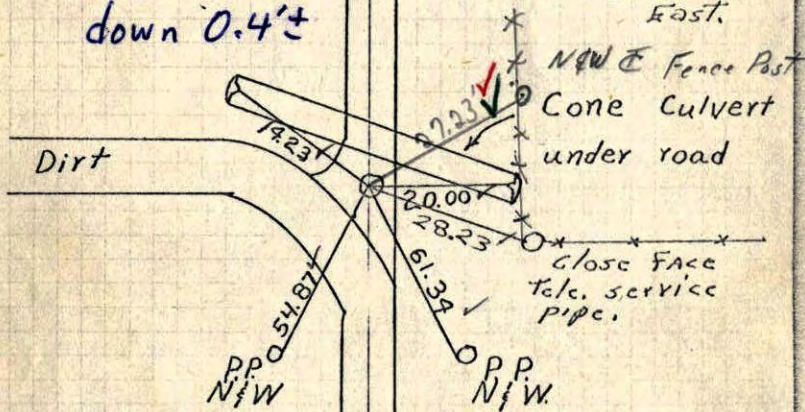
ROLAND W. ANDERSON
COUNTY SURVEYOR
ANOKA COUNTY, MINNESOTA

July 7, 1961²¹
 Freeman, Anderson
 Carlson

+80°

W 1/4 corner Sec 18, T-33, R-25
 Burns

Found square top Stone at Corner. Said to be corner by farmer in area. Stone was set by Sherburne County Surveyor. Replaced Stone with cast iron mon. Cor. is 5.5' ± north of fence ext. From East.
 down 0.4' ±



Tie check
 Aug. 9, 1965
 M.D. Anderson
 J. Dunlop

7-8-69
 Temp 70 ✓
 Tape #5 ✓
 R.A. Olson
 B.N. Olson

TEMPERATURE CORRECTED
 AND HORIZONTALLY
 TAPED MEASUREMENTS

ROLAND W. ANDERSON
 COUNTY SURVEYOR
 ANOKA COUNTY, MINNESOTA

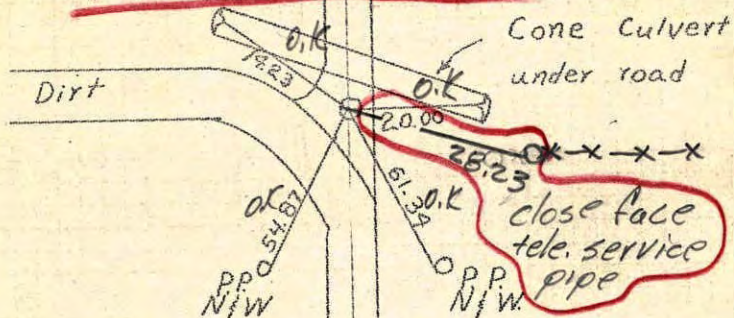
July 7, 1961¹²
 Freeman, Anderson
 Carlson

+80°

W 1/4 corner Sec 18, T-33, R-25
 Burns

Found square top Stone at Corner. Said to be corner by farmer in area. Stone was set by Sherburne County Surveyor. Replaced Stone with cast iron mon.

Cor. is 5.5' ± north of fence extended from East



Temp. 79°
 tape #5
 tie check

Aug. 9, 1965
 M.D. Anderson
 J. Dunlop

TEMPERATURE CORRECTED
 AND HORIZONTALLY
 TAPED MEASUREMENTS

ROLAND W. ANDERSON
 COUNTY SURVEYOR
 ANOKA COUNTY, MINNESOTA

Entered
 HL

7 July 1961
Freeman Anderson
Carlson + 80°

W $\frac{1}{4}$ Cor Sec 18-33-25 Burns

found Sq top Stone at Cor. Said
to be Cor by farmer in area. Stone
was set by Sherburne County
Surveyor, Replaced Stone with
Cast Iron Mon.

