

CERTIFICATE OF LOCATION OF GOVERNMENT CORNER

County of Anoka

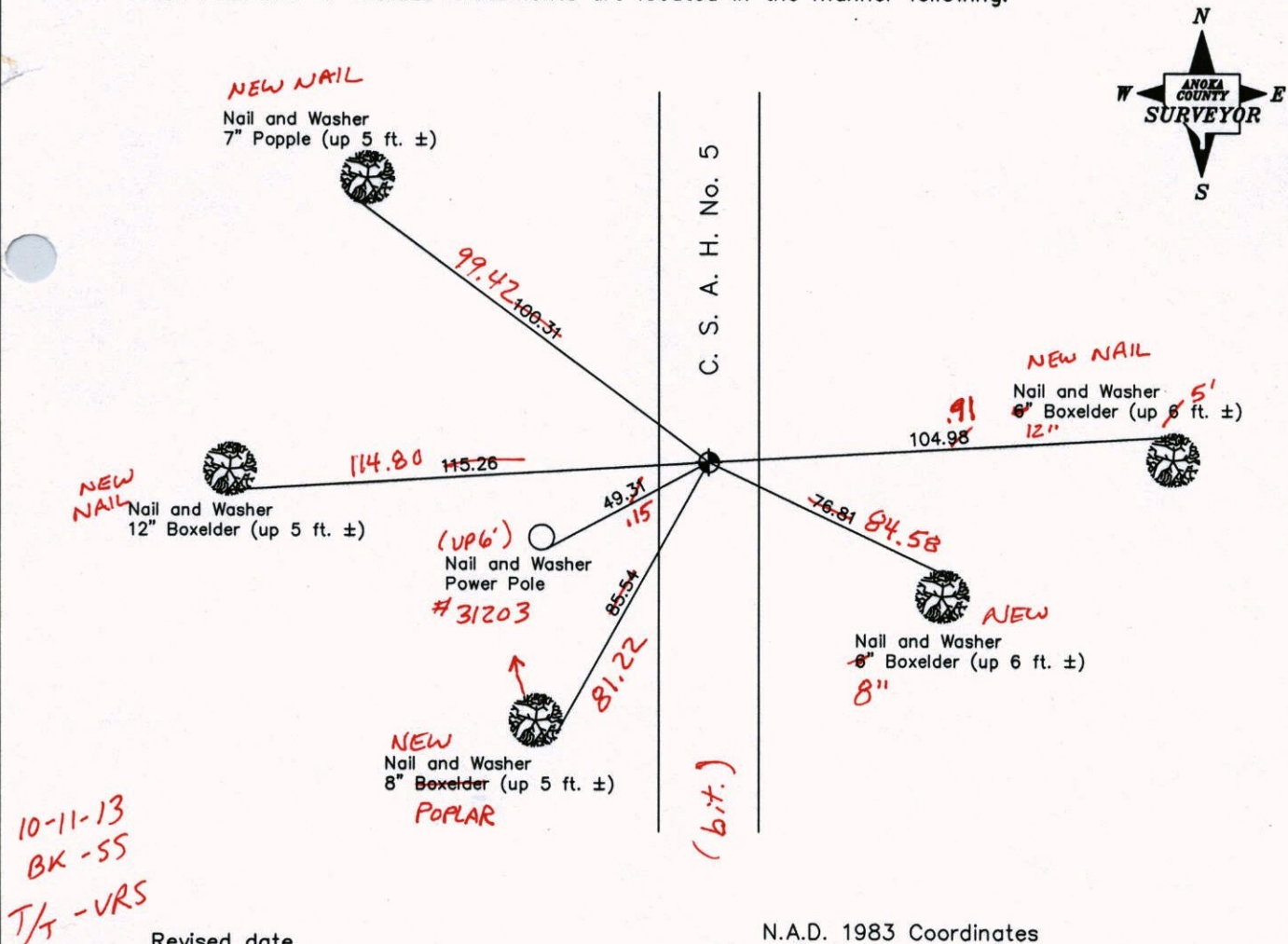
State of Minnesota

East 1/4 Corner of Sec. 17, Township 33, Range 25

I hereby certify that on the 25th day of July, 1973, I found the described corner which was evidenced by 1/2 inch iron pipe

and I further certify that to perpetuate the location of said ~~corner~~ corner, I did, at the exact location thereof, place a permanent marker consisting of a cast iron monument on E

which reference or witness monuments are located in the manner following:



10-11-13
BK-55
T/4 - VRS

Revised date

7-2-85
8-25-88
6-27-94
11-3-98
9-24-02

N.A.D. 1983 Coordinates
(1996 Adjustment)

County Project Coordinates		State Plane Coordinates	
Northing	214689.5688	Y	_____
Easting	447572.1355	X	_____

Date 8-21-02

VRS 3DQ = 0.05 N = 214689.5392 E = 447572.0415

CERTIFICATE OF LOCATION OF GOVERNMENT CORNER

County of Anoka

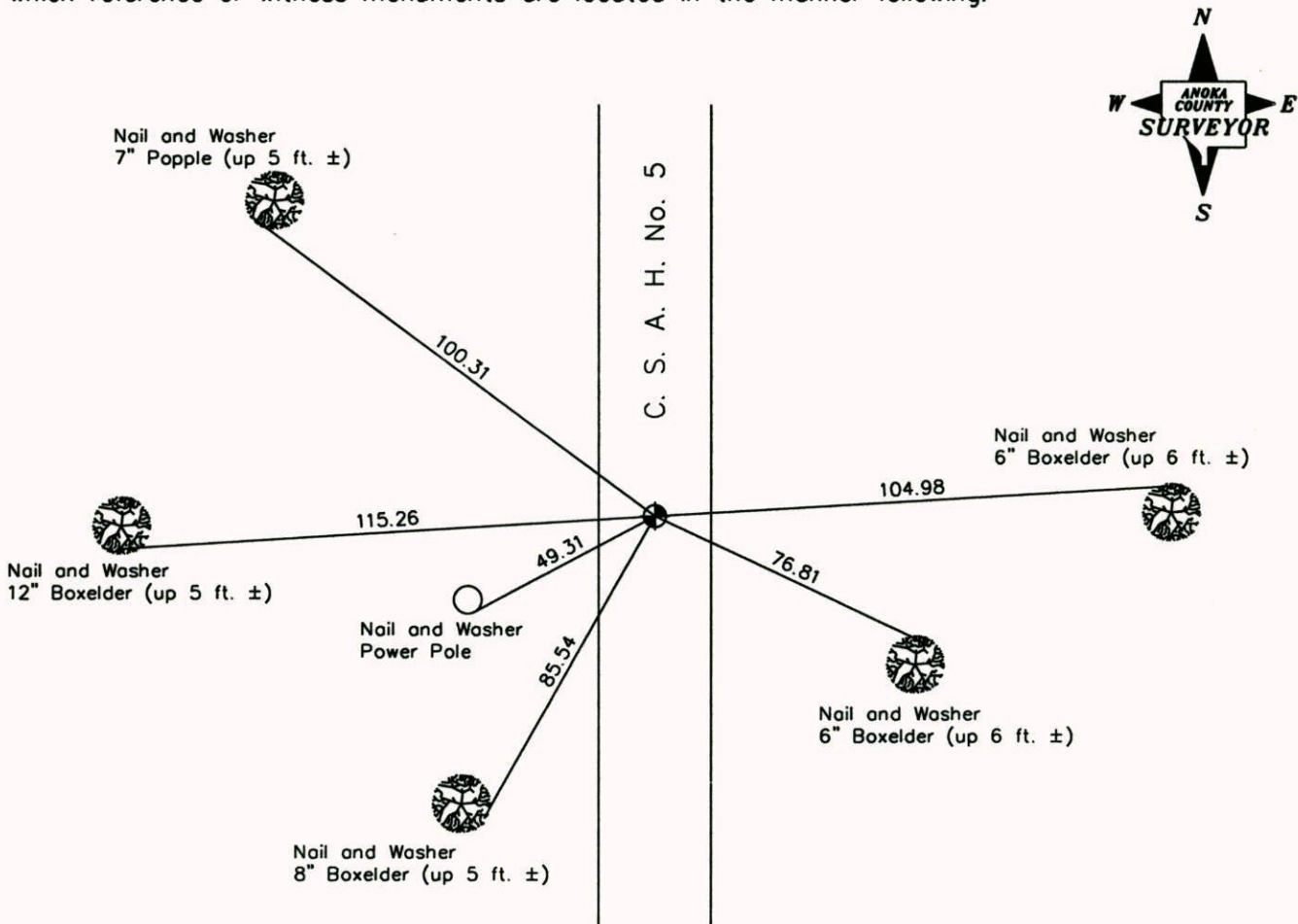
State of Minnesota

East 1/4 Corner of Sec. 17, Township 33, Range 25

I hereby certify that on the 25th day of July, 1973, I found the described corner which was evidenced by 1/2 inch iron pipe

and I further certify that to perpetuate the location of said corner, I did, at the exact location thereof, place a permanent marker consisting of a cast iron monument

which reference or witness monuments are located in the manner following:



Revised date

7-2-85
8-25-88
6-27-94
11-3-98
9-24-02

N.A.D. 1983 Coordinates
(1996 Adjustment)

County Project Coordinates	State Plane Coordinates
Northing <u>214689.5688</u>	Y _____
Easting <u>447572.1355</u>	X _____

Date 8-21-02

CERTIFICATE OF LOCATION OF GOVERNMENT CORNER

County of Anoka

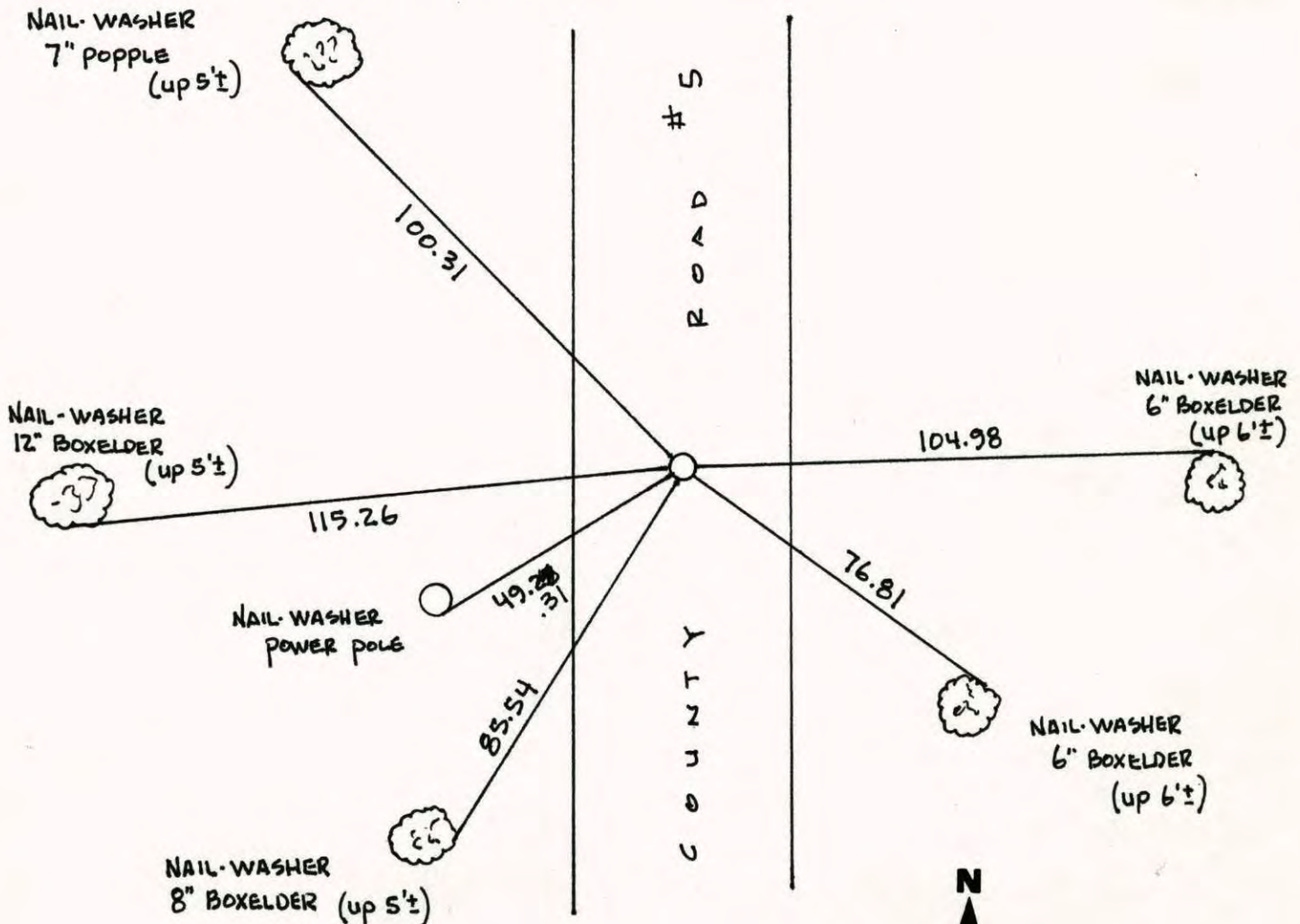
State of Minnesota

EAST 1/4 Corner of Sec. 17 Township 33 Range 25

I hereby certify that on the 25TH day of July, 1973, I found the described corner which was evidenced by 1/2" IRON PIPE

and I further certify that to perpetuate the location of said corner, I did, at the exact location thereof, place a permanent marker consisting of CAST IRON MONUMENT

which reference or witness monuments are located in the manner following:



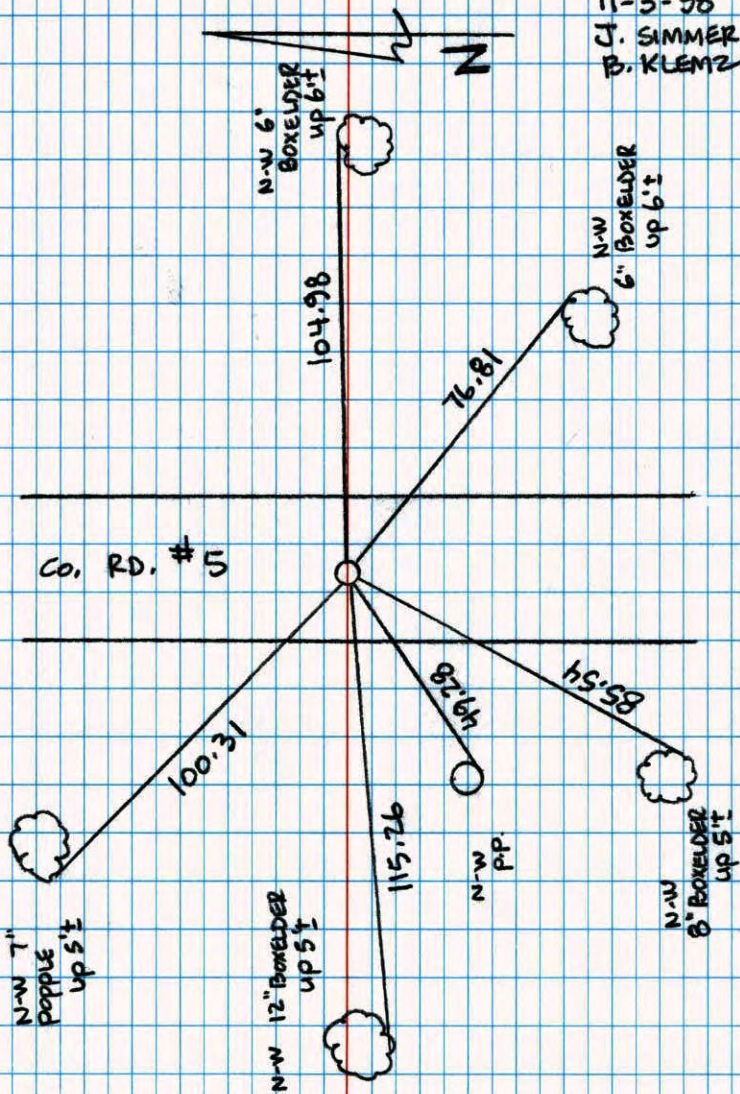
Revised date	Revised date	Revised date
7-2-85		
8-25-88		
6-27-94		
11-3-98		
9-24-02		



EAST 1/4 COR. SEC. 17 T33 R25

RESET & RETIED CAST IRON MON.

11-3-98
C. SIMMER
B. KLEMZ



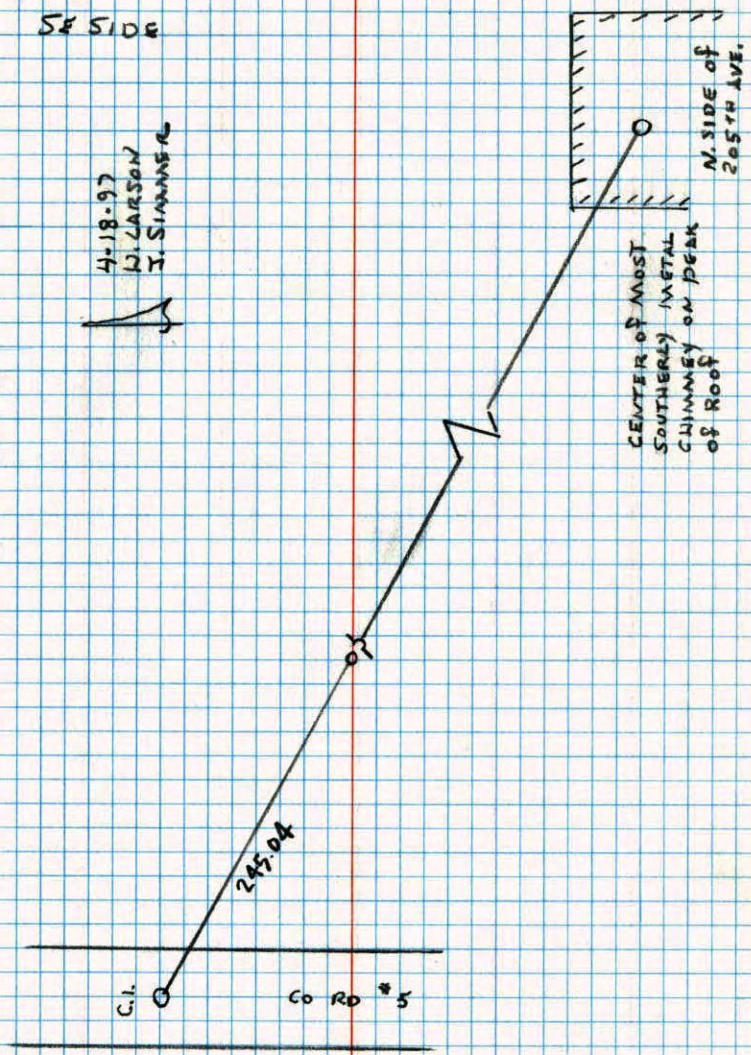
NATIONAL PRINTFAST NO. 446

E 1/4 CORNER SECTION 17 T33 R25

SET XIP ON LINE SIGN + POST

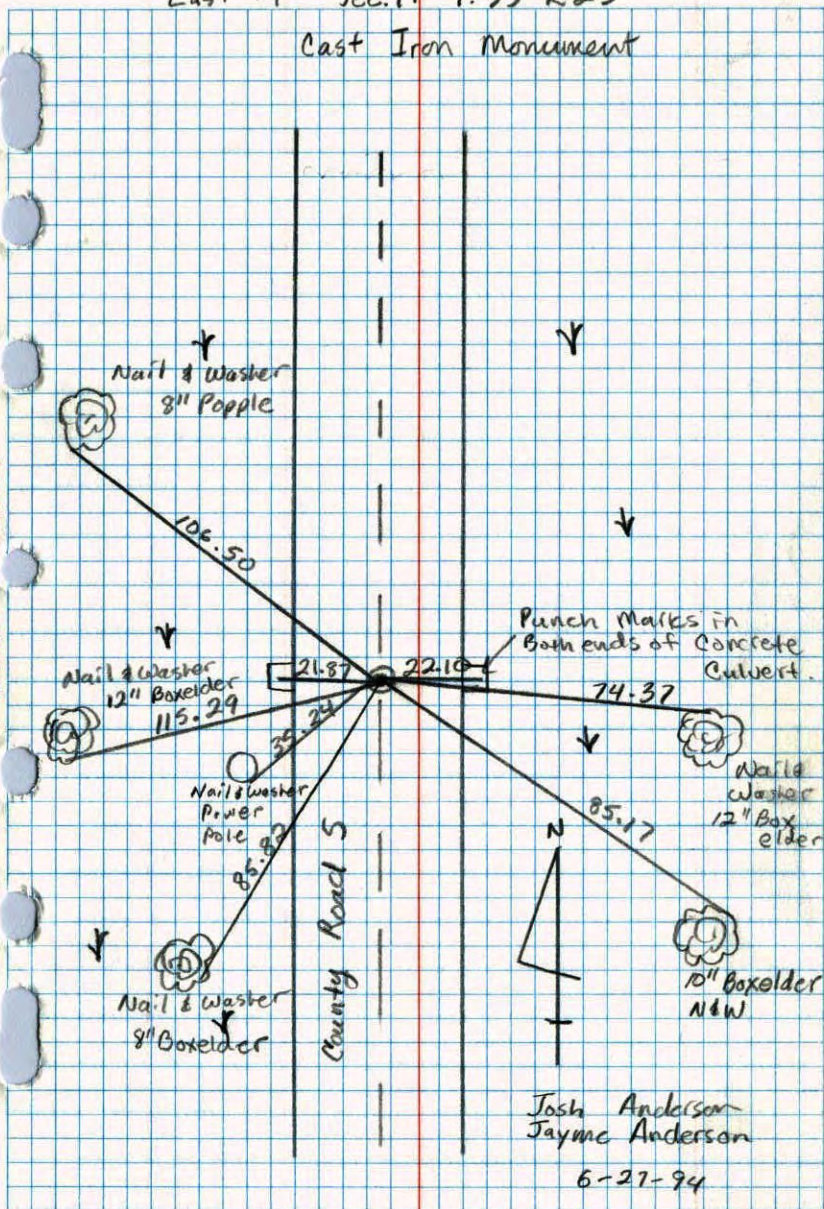
SE SIDE

4-18-97
L. LARSON
J. SIMMER

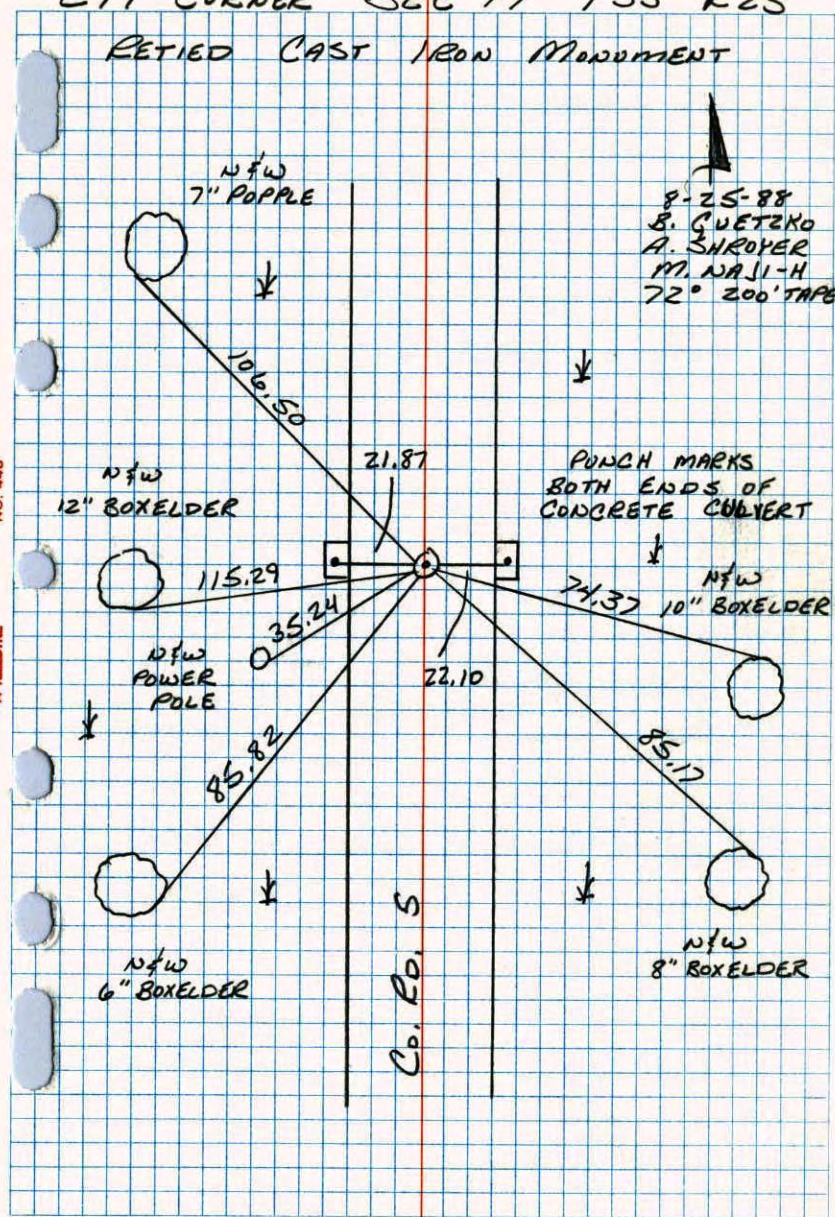


NATIONAL PRINTFAST NO. 446

East 1/4 Sec. 17 T. 33 R. 25
Cast Iron Monument



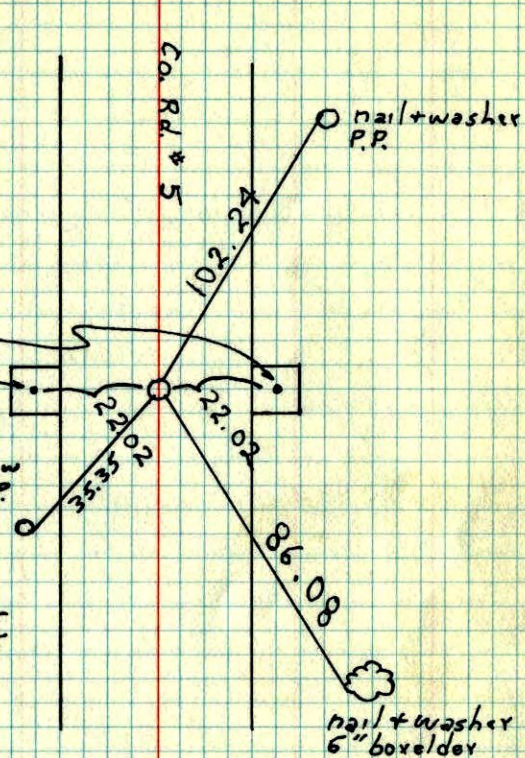
E 1/4 CORNER SEC 17 T33 R25
RETIRED CAST IRON MONUMENT



E 1/4 Cor. Sec. 17 T33 R25

Set cast iron monument in place of
1/2" Iron pipe. R.K.'s 2.00' N + E.

7-25-73

B. Olson
D. Brien
D. FarmerHoles in top
of 36" conc.
culvert7-22-76
TIE CHECK
G. ADAMS
S. BRIEN
J. STEPHENSTIE CHECK
7-11-79
B. STEPHENS
D. STEPHENS
P. ROSSTIE CHECK
8-5-82
P. ROSS
P. HORNBYTEMPERATURE CORRECTED
AND HORIZONTALLY
TAPED MEASUREMENTSROLAND W. ANDERSON
COUNTY SURVEYOR
ANOKA COUNTY, MINNESOTA

E 1/4 Cor Sec 17 T33 R 25

Set Removable, Cast Iron Mon.
in place of 1/2" I.P. P.K.'s NEE

July 25, 1973

B. Olson
D. Brien
D. Farmer

County Rd #5

