

CERTIFICATE OF LOCATION OF GOVERNMENT CORNER

County of Anoka

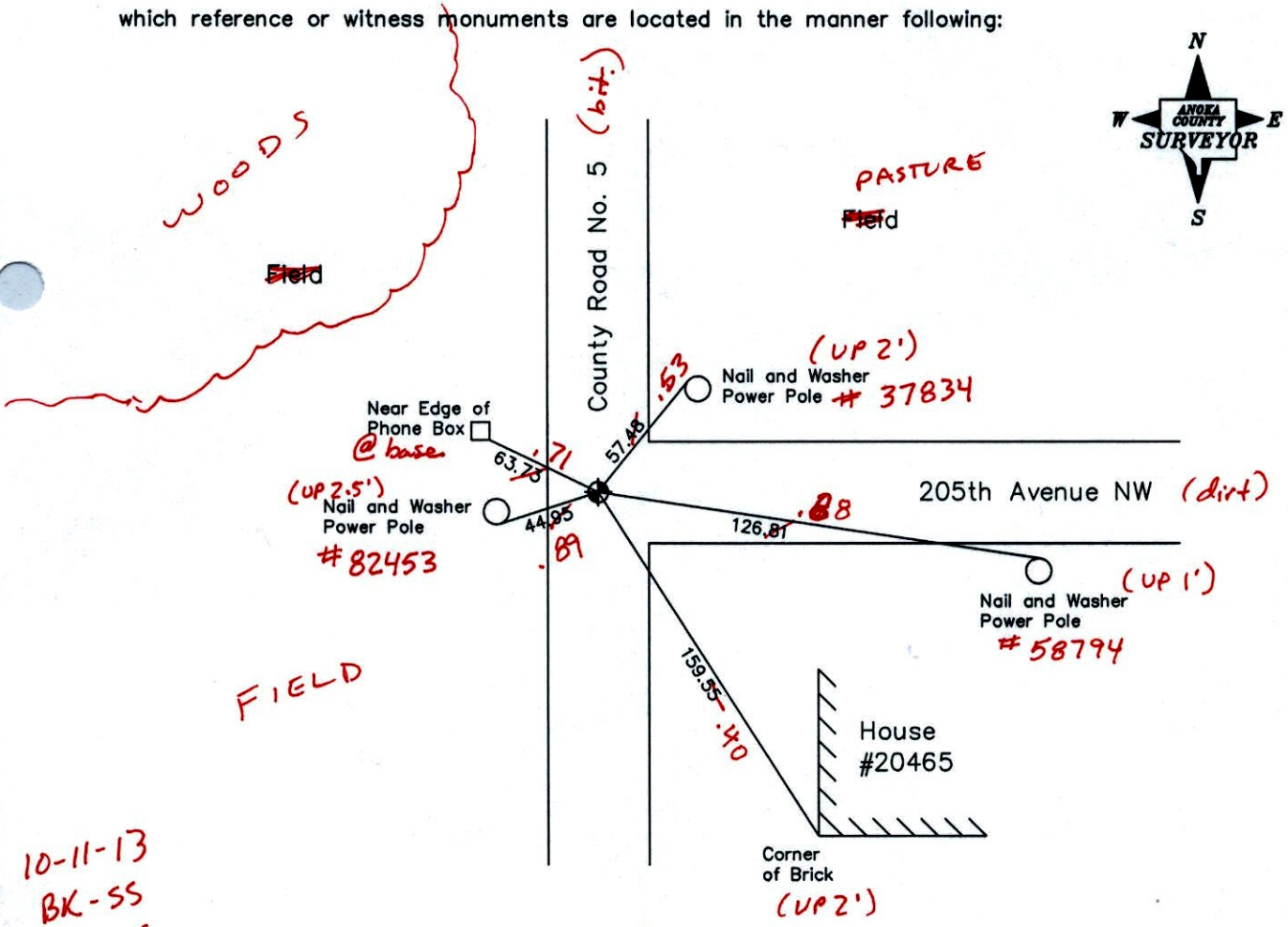
State of Minnesota

Northwest Corner of Sec. 21, Township 33, Range 25

I hereby certify that on the 3rd day of July, 1961, I found the described corner which was evidenced by a 1/2 inch iron pipe

and I further certify that to perpetuate the location of said ~~corner~~ [✓], I did, at the exact location thereof, place a permanent marker consisting of a cast iron monument ON E - E

which reference or witness monuments are located in the manner following:



10-11-13
BK-SS
TK-VRS

Revised date

6-28-85
8-25-88
6-27-94
10-27-98
9-24-02

N.A.D. 1983 Co-ordinates
(1996 Adjustment)

County Project Co-ordinates		State Plane Co-ordinates	
Northing	212060.5962	Y	_____
Easting	447592.5520	X	_____

Date 8-21-02

VRS 3DQ = 0.09 N = 212060.5789 E = 447592.4884

CERTIFICATE OF LOCATION OF GOVERNMENT CORNER

County of Anoka

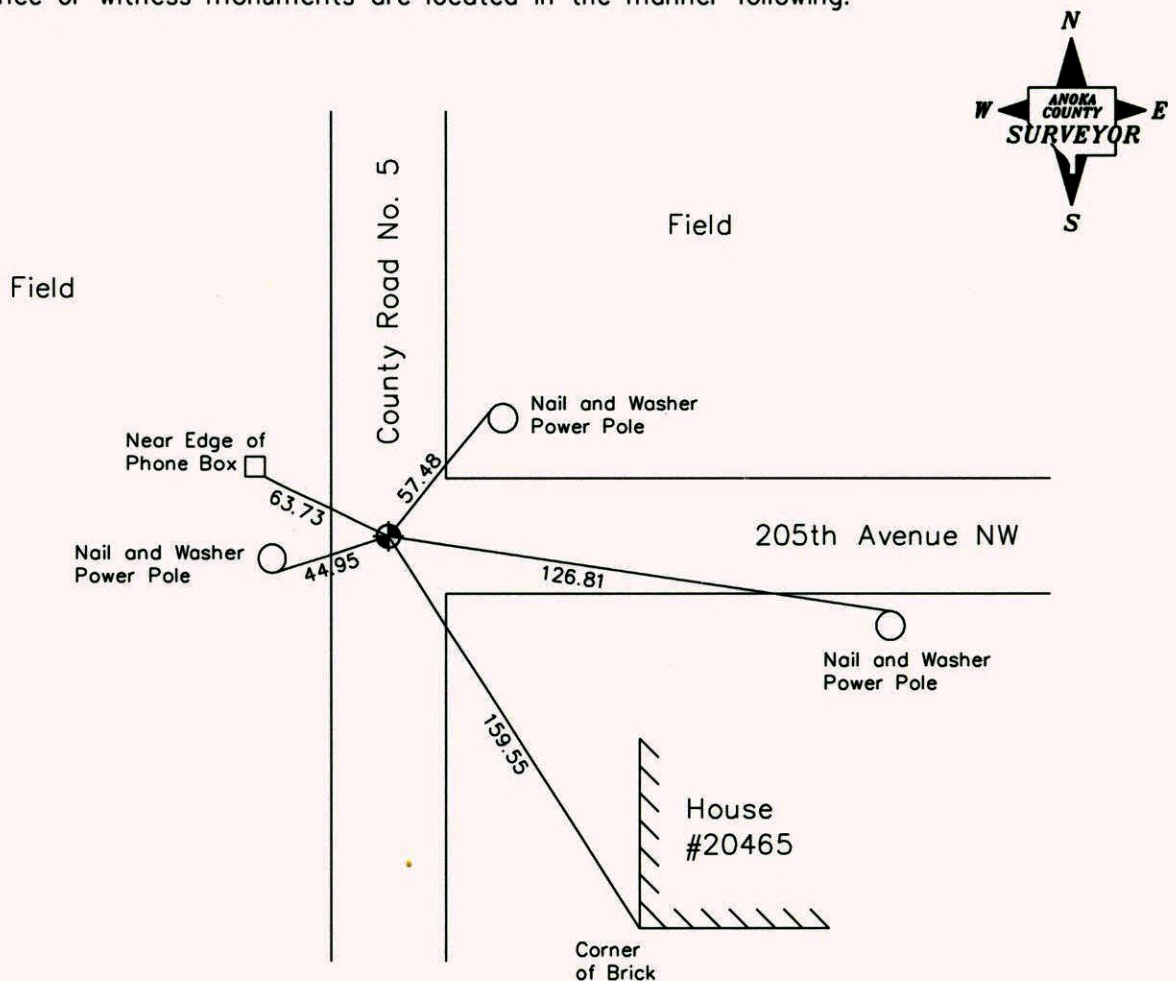
State of Minnesota

Northwest Corner of Sec. 21, Township 33, Range 25

I hereby certify that on the 3rd day of July, 1961, I found the described corner which was evidenced by a 1/2 inch iron pipe

and I further certify that to perpetuate the location of said corner, I did, at the exact location thereof, place a permanent marker consisting of a cast iron monument

which reference or witness monuments are located in the manner following:



Revised date

6-28-85
8-25-88
6-27-94
10-27-98
9-24-02

N.A.D. 1983 Co-ordinates
(1996 Adjustment)

County Project Co-ordinates	State Plane Co-ordinates
Northing <u>212060.5962</u>	Y _____
Easting <u>447592.5520</u>	X _____

Date 8-21-02

CERTIFICATE OF LOCATION OF GOVERNMENT CORNER

County of Anoka

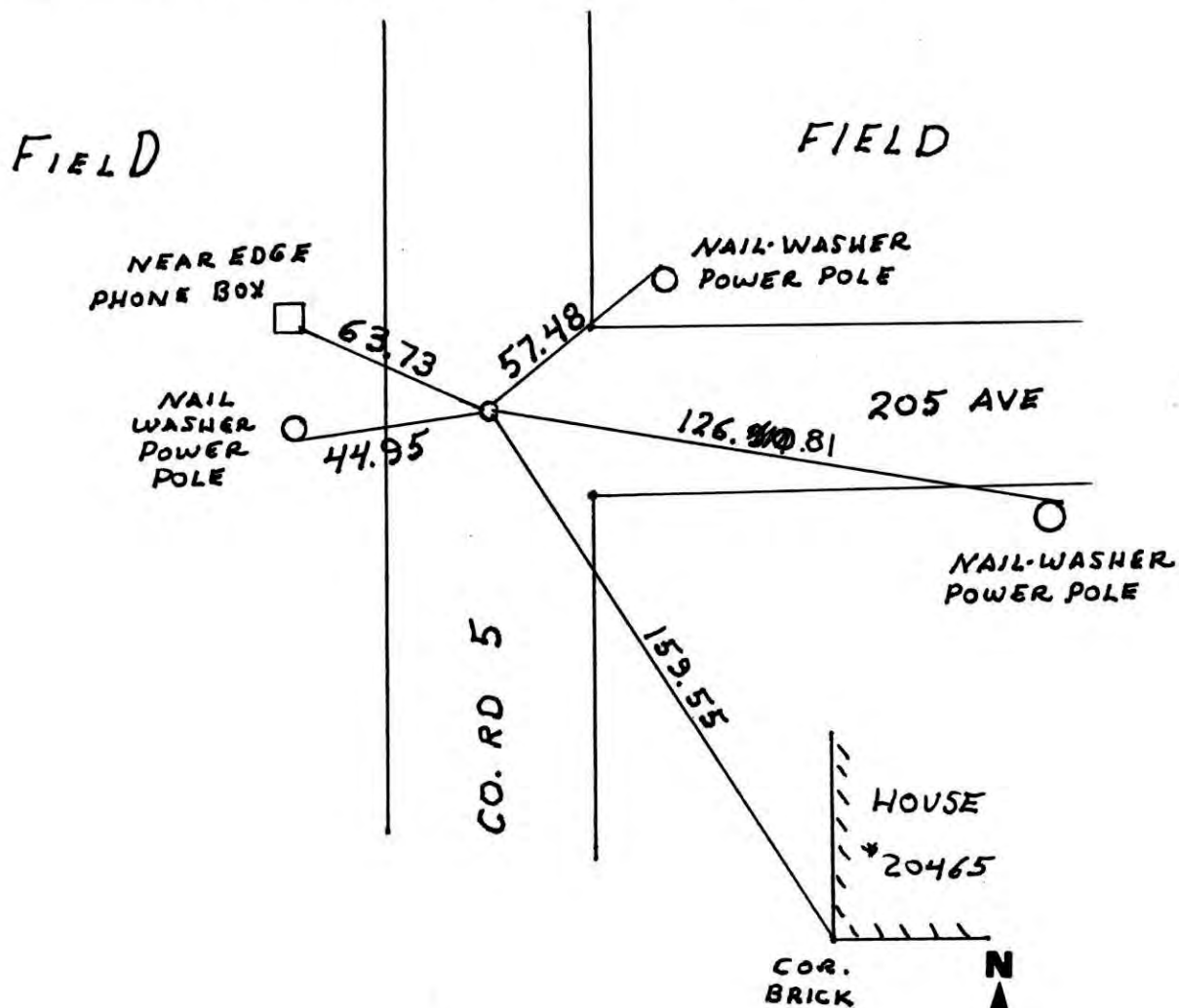
State of Minnesota

NORTHWEST Corner of Sec. 21 Township 33 Range 25

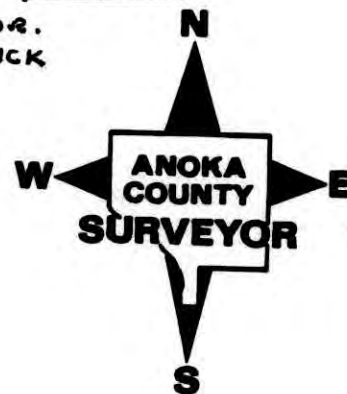
I hereby certify that on the 3 day of JULY, 1961, I found the described corner which was evidenced by 1/2" IRON PIPE

and I further certify that to perpetuate the location of said corner, I did, at the exact location thereof, place a permanent marker consisting of CAST IRON MONUMENT

which reference or witness monuments are located in the manner following:

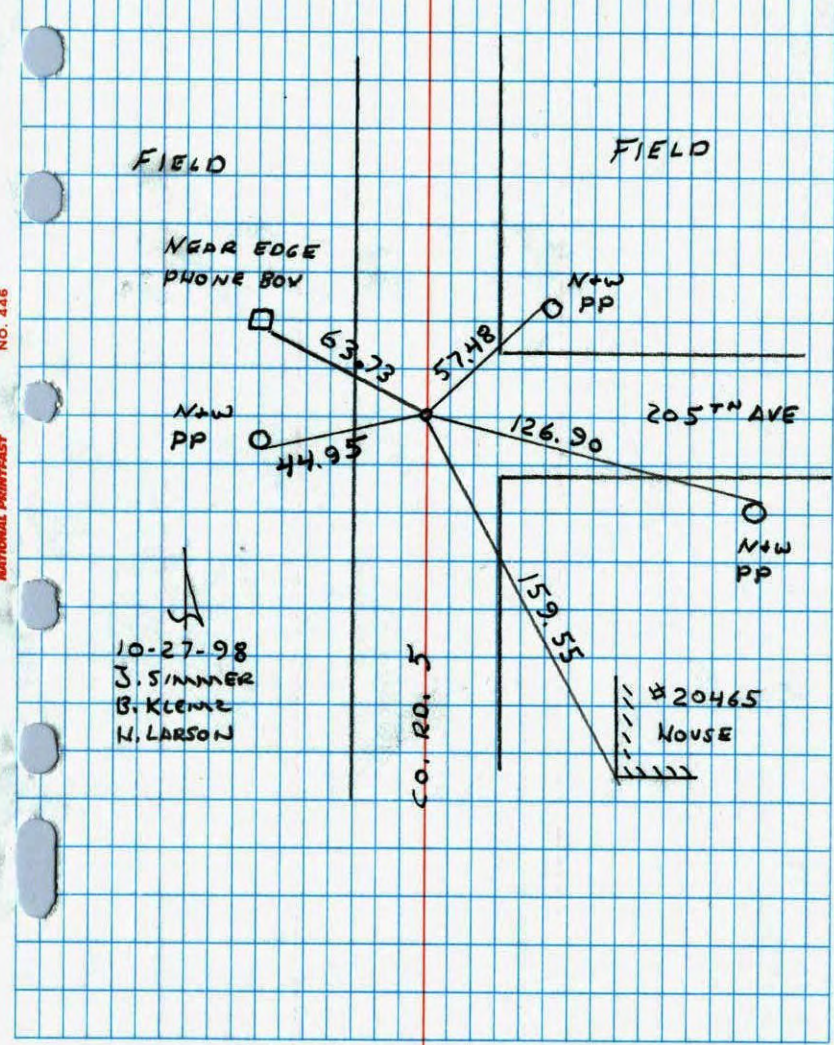


Revised date	Revised date	Revised date
6-28-85		
8-25-88		
6-27-94		
10-27-98		
9-24-02		



NW COR SECTION 21 T33 R25

RESET AND RETIED AFTER CONSTRUCTION

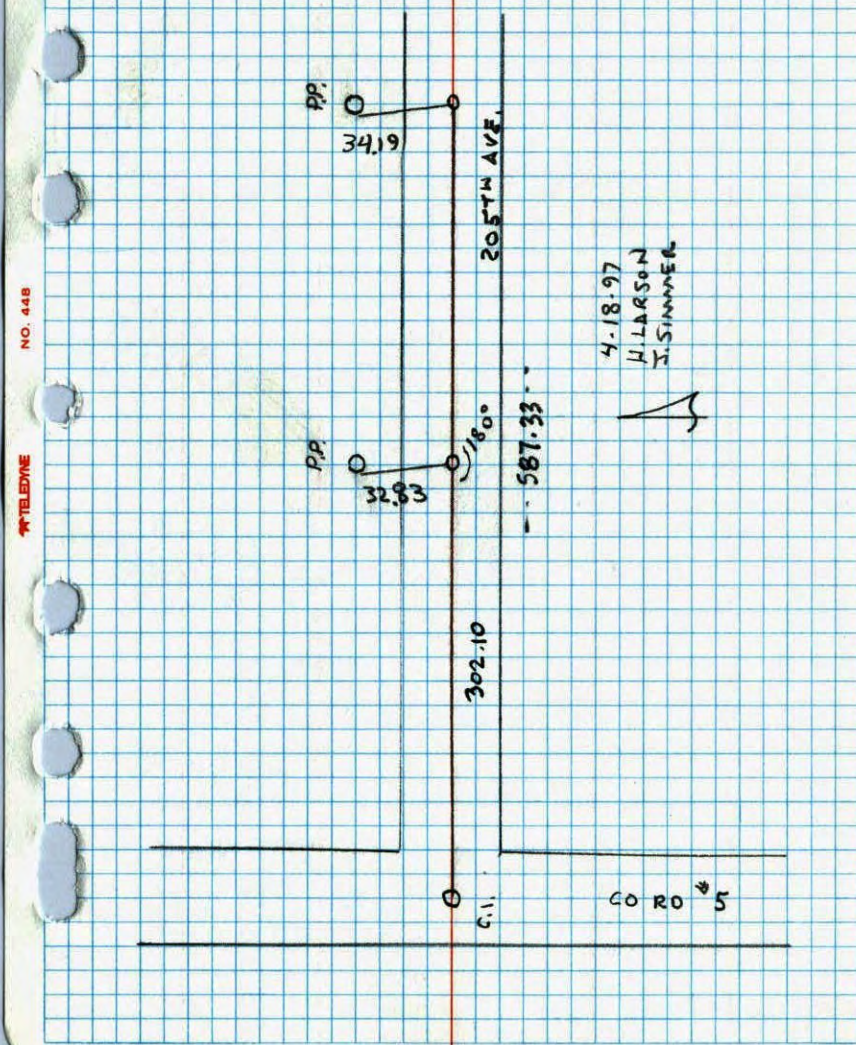


10-27-98
J. SIMMER
B. KLEME
N. LARSON

CONSTRUCTION TIES

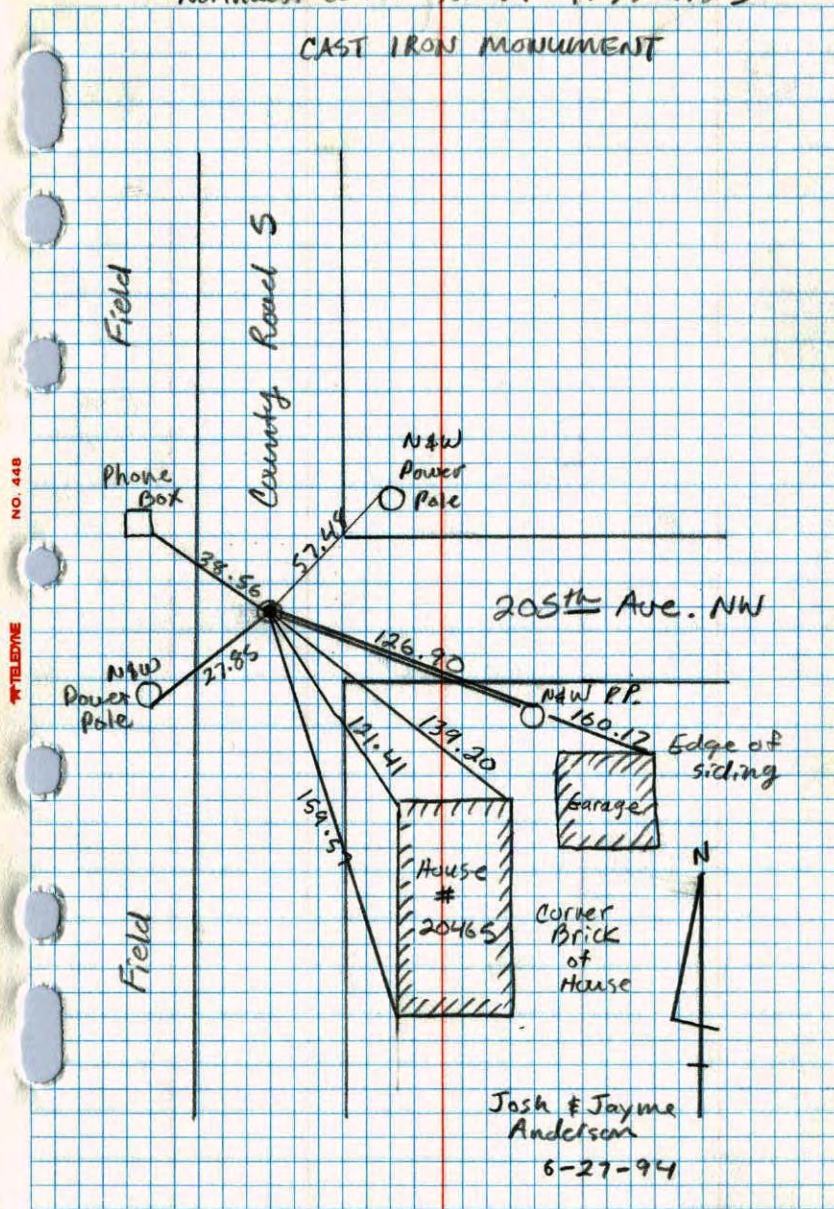
NW CORNER SECTION 21 T33 R25

SET 1/2" IRON PIPES AS TRANSIT TIES



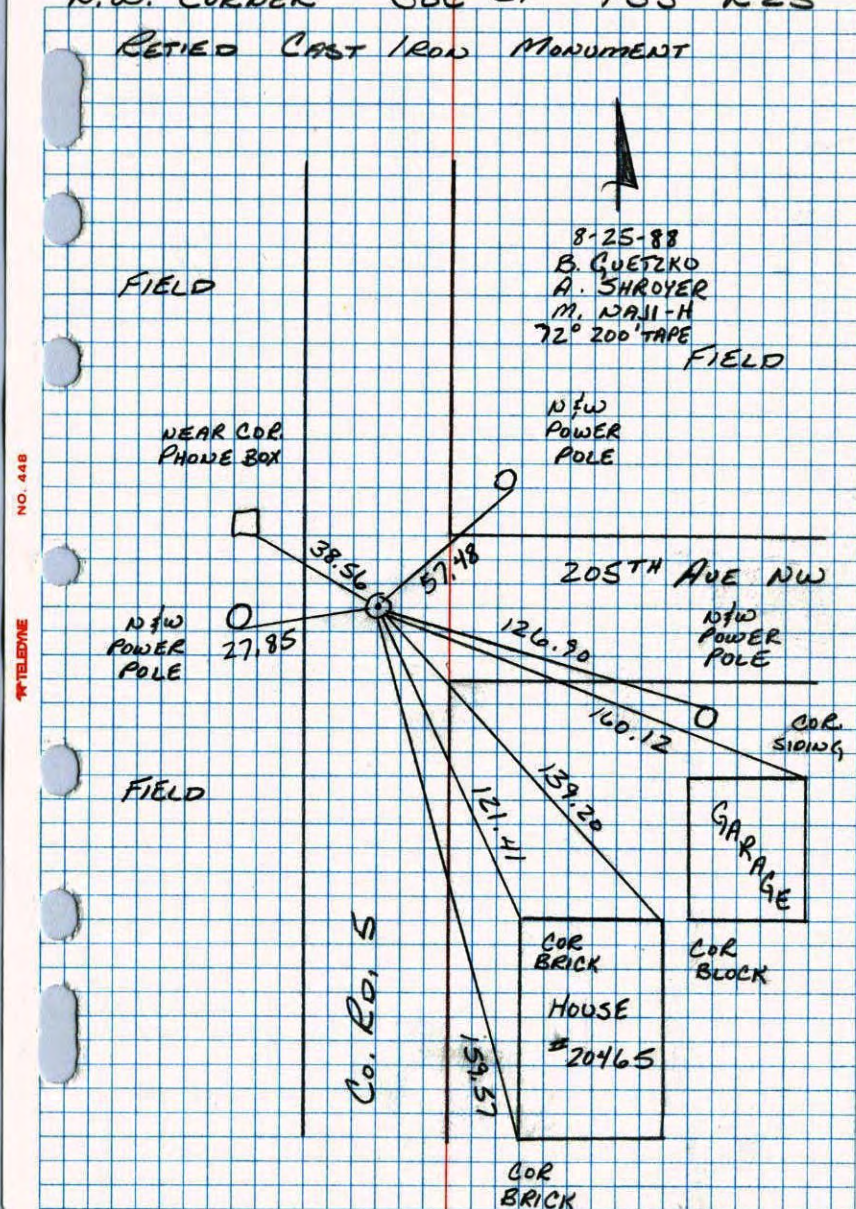
4-18-97
H. LARSON
J. SIMMER

Northwest Corner Sect 21 T.33 R.25
CAST IRON MONUMENT



NO. 448 TELEPHONE

N.W. CORNER SEC 21 T33 R25
RETIRED CAST IRON MONUMENT



NO. 448 TELEPHONE

July 3, 1961 66
Freeman, Anderson

+78°

NW Corner Sec 21, T-33, R-25
Burns

Found $\frac{1}{2}$ " iron down 0.15 in $\frac{1}{2}$
Blacktop County Road #5.

TIE CHECK
7-26-76
G. ADAMS
S. BRIEN
J. STEPHENS

PK Nails 2.00' N+E
Replaced Iron Pipe
with Cast Iron Mon.
flush. 7/14/69

TIE CHECK
7-11-79
B. STEPHENS
D. STEPHENS
P. ROSS

Tie Check
July 23, 1973
B. Olson
D. Brien
D. Farmer

NAIL WASHER
22" OAK

Tie check
Aug. 6, 1965
M.D. Anderson
S. Dunlop

Tie Check
July 2, 1969
R.A. Olson
B.N. Olson
D. Powell

TEMPERATURE CORRECTED
AND HORIZONTALLY
TAPED MEASUREMENTS

TIE CHECK
8-2-82
P. ROSS
P. HORNBY

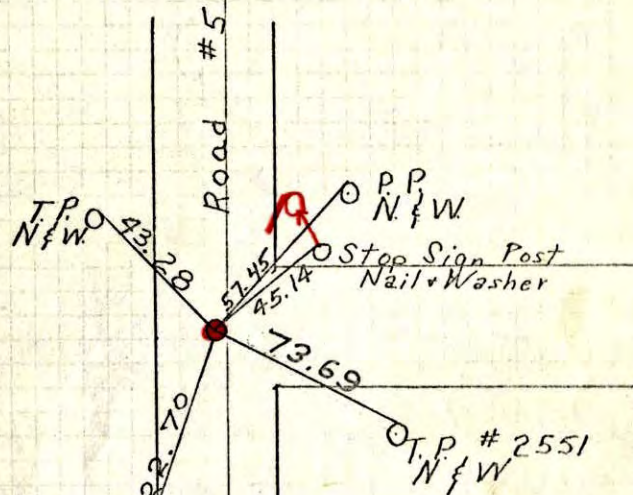
ROLAND W. ANDERSON
COUNTY SURVEYOR
ANOKA COUNTY, MINNESOTA

July 3, 1961 30
Freeman, Anderson

+78°

NW Corner Sec 21, T-33, R-25
Burns

Found $\frac{1}{2}$ " iron down 0.15 in $\frac{1}{2}$
Blacktop County Road #5.



NAIL WASHER
22" OAK

Tie check
Aug. 6, 1965
M.D. Anderson
S. Dunlop

Tie Check
July 2, 1969
R.A. Olson
B.N. Olson

TEMPERATURE CORRECTED
AND HORIZONTALLY
TAPED MEASUREMENTS

ROLAND W. ANDERSON
COUNTY SURVEYOR
ANOKA COUNTY, MINNESOTA

PK's 2.00' N+E
Replaced Iron
with C.I. Mon. flush.

7/14/69

DP

July 3, 1961³⁰
Freeman, Anderson

+78°

NW Corner Sec 21, T-33, R-25
Burns

Found 1/2" iron down 0.25 in 2
Blacktop County Road #5.

C.I. To Be.
Set.

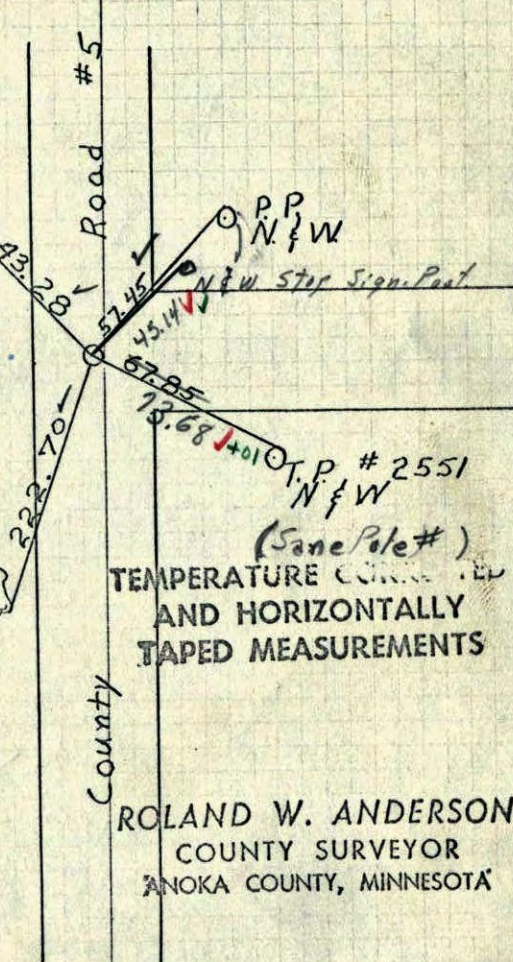
NAIL WASHER
22" OAK

Tie check
Aug. 6, 1965
M.D. Anderson
J. Dunlop

7-2-69
Temp 72 ✓
Tape #5 ✓
R.A. Olson
B.N. Olson

T.P. # 2551
N & W
(Same Pole #)
TEMPERATURE CORRECTED
AND HORIZONTALLY
TAPED MEASUREMENTS

ROLAND W. ANDERSON
COUNTY SURVEYOR
ANOKA COUNTY, MINNESOTA



July 3, 1961²⁰
Freeman, Anderson

+78°

NW Corner Sec 21, T-33, R-25
Burns

Found 1/2" iron down 0.15 in 2
Blacktop County Road #5.

22" Oak
N & W

Tape #5
Temp. 76°

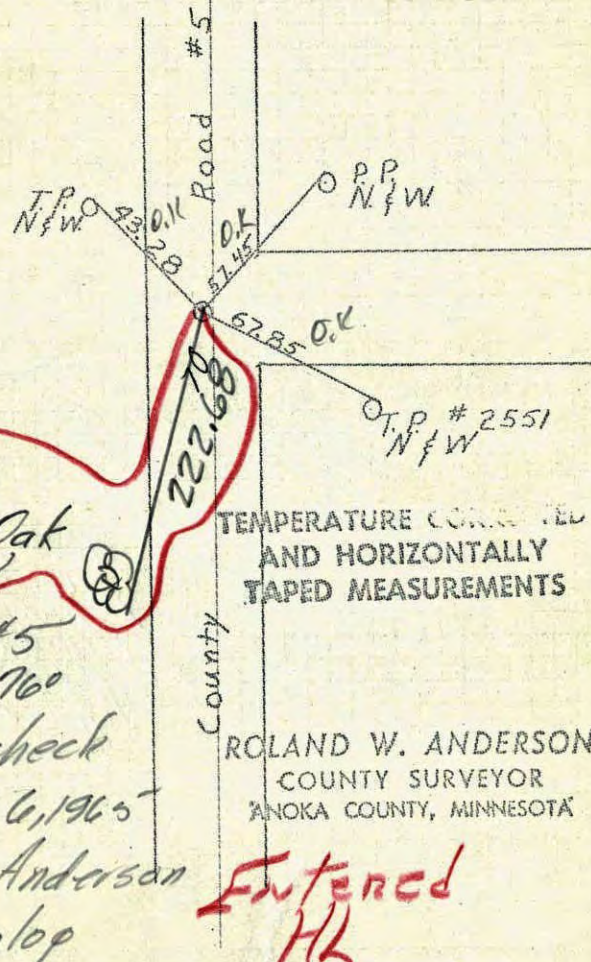
Tie check
Aug. 6, 1965

M.D. Anderson
J. Dunlop

TEMPERATURE CORRECTED
AND HORIZONTALLY
TAPED MEASUREMENTS

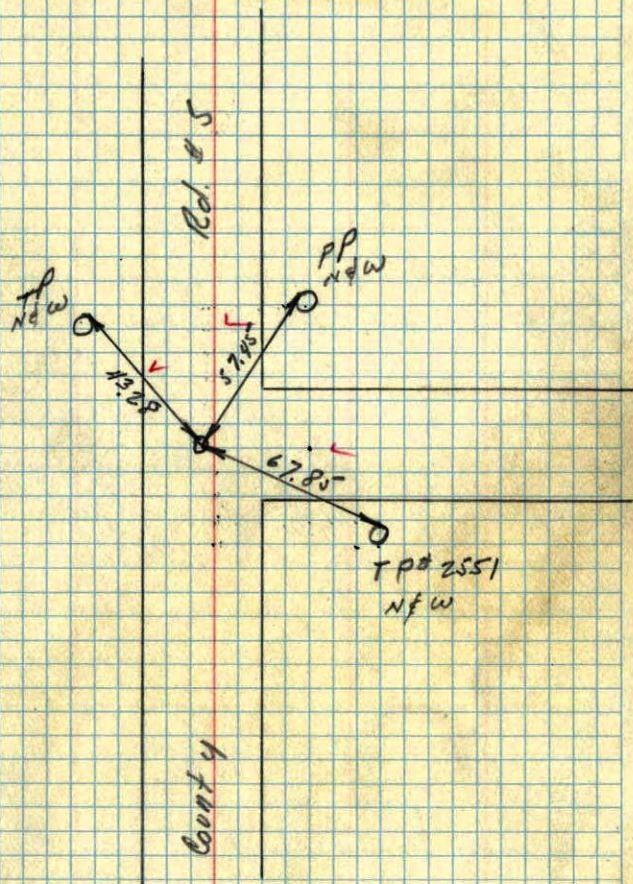
ROLAND W. ANDERSON
COUNTY SURVEYOR
ANOKA COUNTY, MINNESOTA

Entered
HL



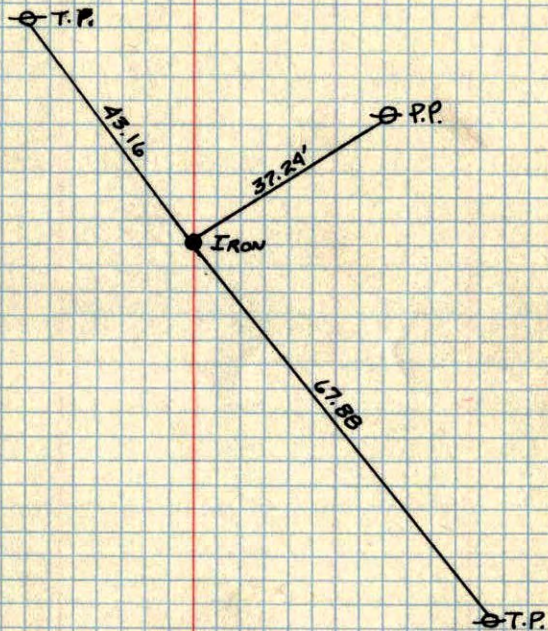
3 July 1961
Freeman Anderson
+78°

NW Cor Sec 21-33-25 Burns
Found $\frac{1}{2}$ " iron down 0.5 in 2 Blacktop
County Rd 45



N.W. CORNER OF SEC. 21, T.33, R.25

IRON



No Date
Wilke