

CERTIFICATE OF LOCATION OF GOVERNMENT CORNER

County of Anoka

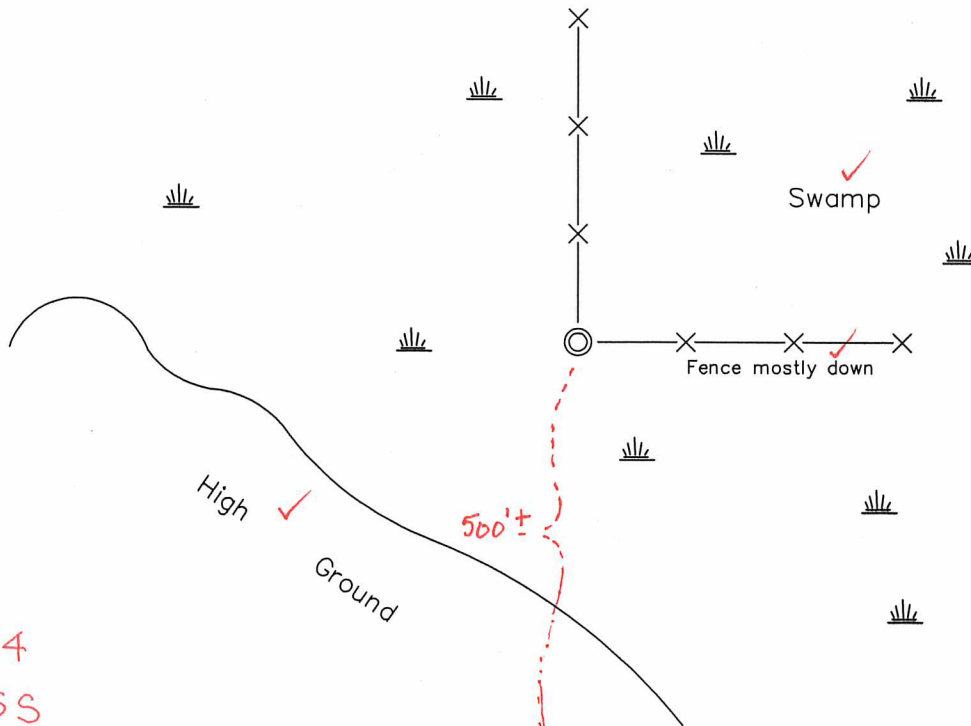
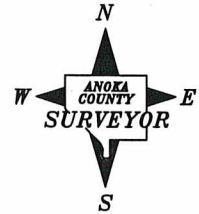
State of Minnesota

South 1/4 Corner of Sec. 17, Township 33, Range 25

I hereby certify that on the 31st day of July, 1973, I found the described corner which was evidenced by a corner set by N.C. Hoium

and I further certify that to perpetuate the location of said corner, I did, at the exact location thereof, place a permanent marker consisting of a red and white iron pipe W/SIGN ATTACHED FACING SOUTH
(UP 1'±)

which reference or witness monuments are located in the manner following:



12/1/14
BIC-SS
VRS

HSE #
20362

N.A.D. 1983 Co-ordinates
(1996 Adjustment)

Revised date

1-17-78
7-15-85
6-21-89
2-11-03

County Project Co-ordinates	
Northing	<u>212102.7885</u>
Easting	<u>444951.9841</u>

State Plane Co-ordinates	
Y	_____
X	_____

Date 2-11-03

N=212102.7847 E=444951.9852

3D=0.05

CERTIFICATE OF LOCATION OF GOVERNMENT CORNER

County of Anoka

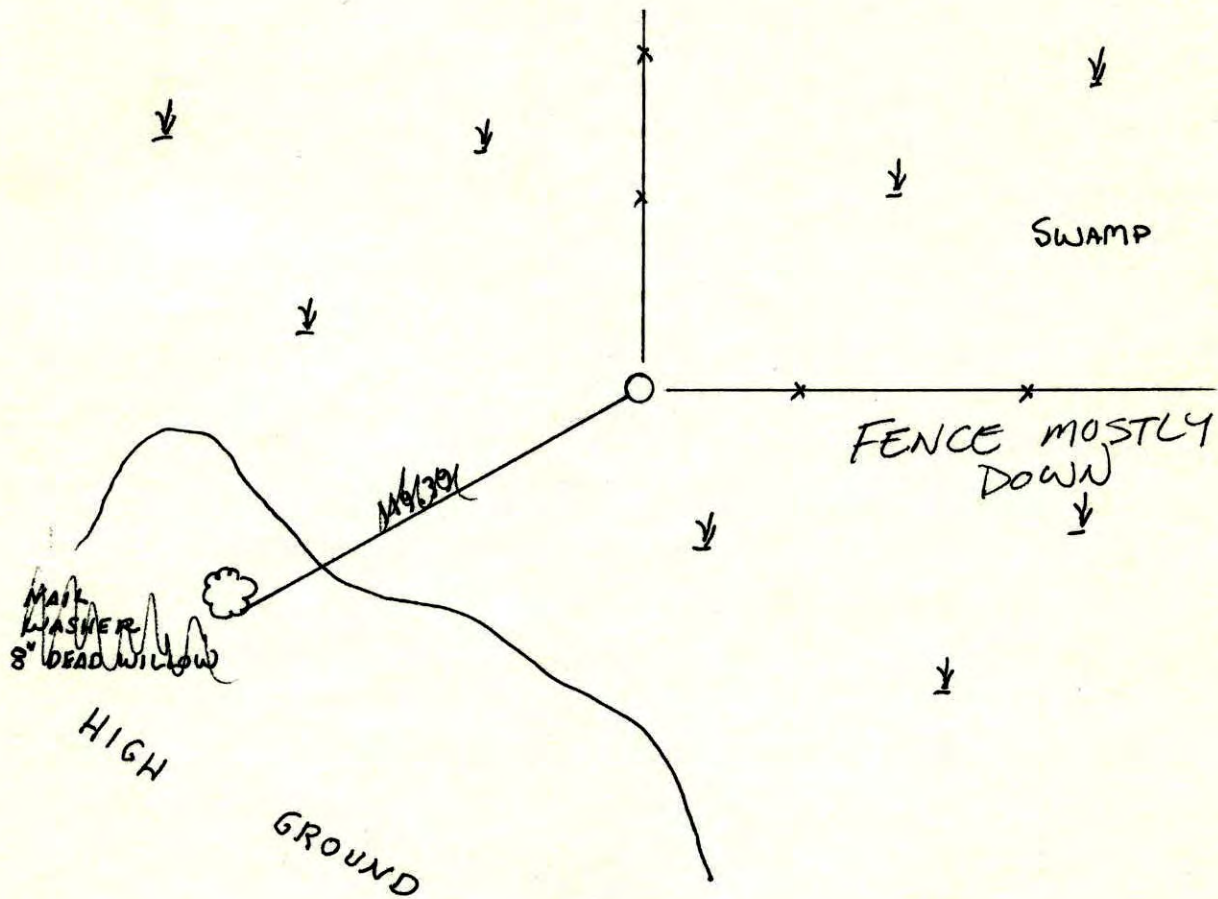
State of Minnesota

SOUTH 1/4 Corner of Sec. 17 Township 33 Range 25

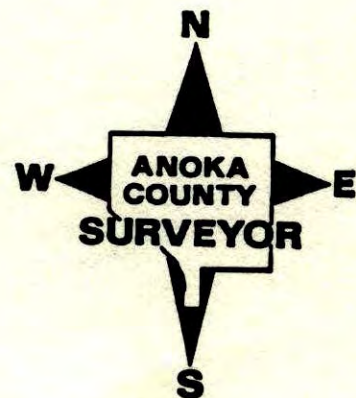
I hereby certify that on the 31st day of JULY, 1973, I found the described corner which was evidenced by COR. SET BY N.C. HOLMAN

and I further certify that to perpetuate the location of said corner, I did, at the exact location thereof, place a permanent marker consisting of RED AND WHITE IRON PIPE

which reference or witness monuments are located in the manner following:



Revised date	Revised date	Revised date
1-17-78		
7-15-85		
6-21-89		
2-11-03		



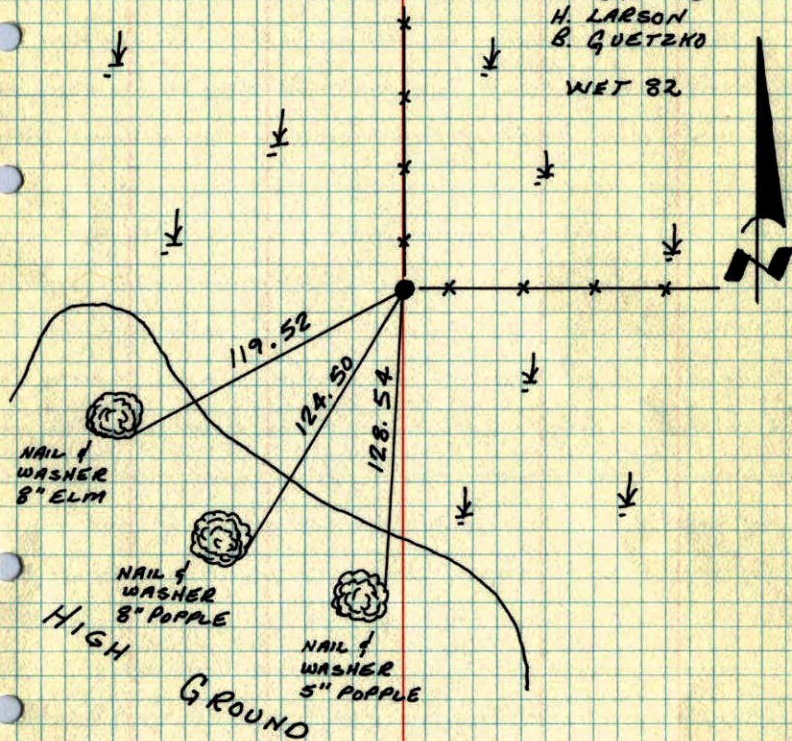
S 1/4 COR. SEC. 17-T33-R25

TIED RED AND WHITE IRON PIPE SET BY M.D.

ANDERSON IN 1973. IRON PIPE REPLACED

CORNER SET BY N.C. HOJUM. IRON PIPE UP 3'±.

17 JAN 78
H. LARSON
B. GUETZKO
WET 82



TEMPERATURE CORRECTED
AND HORIZONTALLY
TAPED MEASUREMENTS

ROLAND W. ANDERSON
COUNTY SURVEYOR
ANOKA COUNTY, MINNESOTA

S 1/4 Cor. Section 17 T33 R25

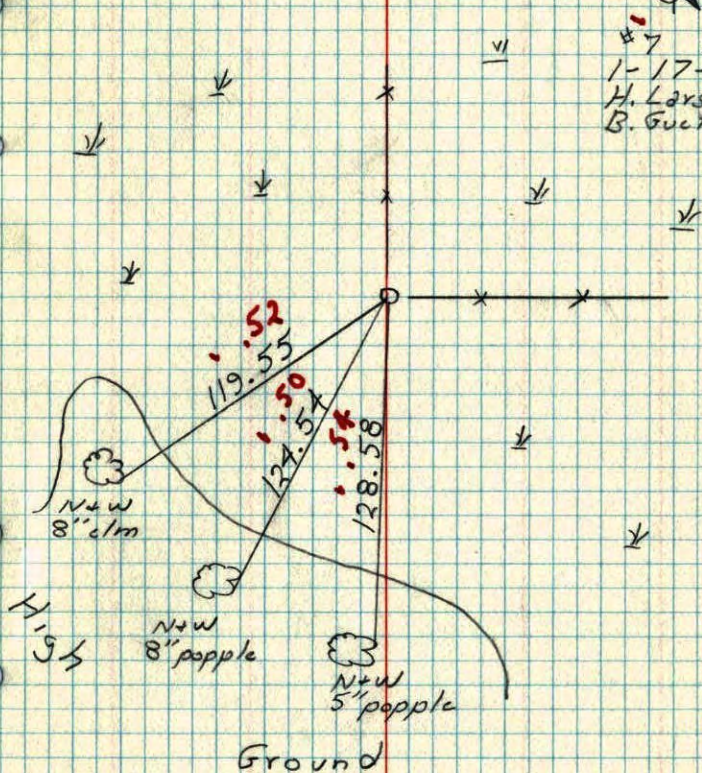
Tied Red and white iron pipe set

by M.D. Anderson in 1973 I.P. replaced

cor. set by N.C. Hojum.

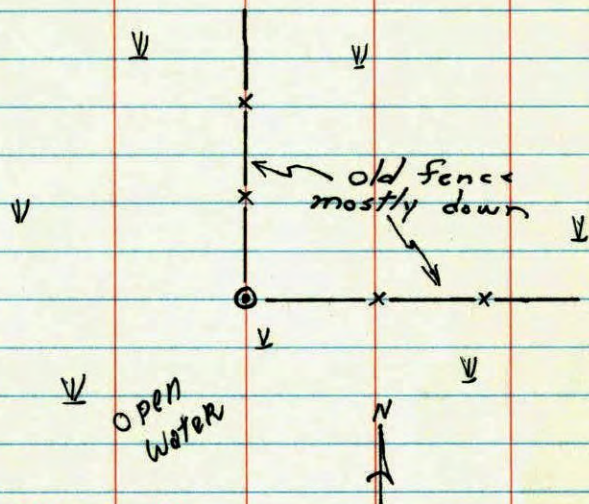
I.P. up 3'±

#7 20°
1-17-78
H. Larson
B. Guetzko



~~40~~
67
5/4 Cor. Sec. 17, T33 R25

Corner set by N.C. Holm
replaced with red & white iron
pipe with warning sign.



*Retie d
Sec new ties
1-17-78
H. Larson
B. Gustiko*

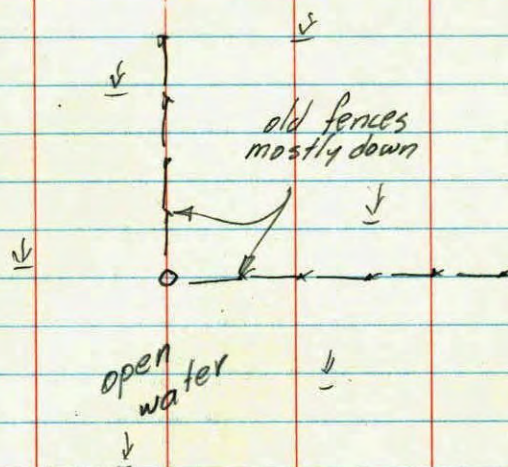
July 31, 1973
M.D. Anderson +
H.J. Larson +

ROLAND W. ANDERSON
COUNTY SURVEYOR
ANOKA COUNTY, MINNESOTA

TEMPERATURE CORRECTED
AND HORIZONTALLY
TAPED MEASUREMENTS

5/4 Cor. Sec. 17-T33-R25

Cor. set by N.C. Holm
Replaced with Red & white I.P. with
warning sign



July 31, 1973
M.D. Anderson
H.J. Larson