

CERTIFICATE OF LOCATION OF GOVERNMENT CORNER

County of Anoka

State of Minnesota

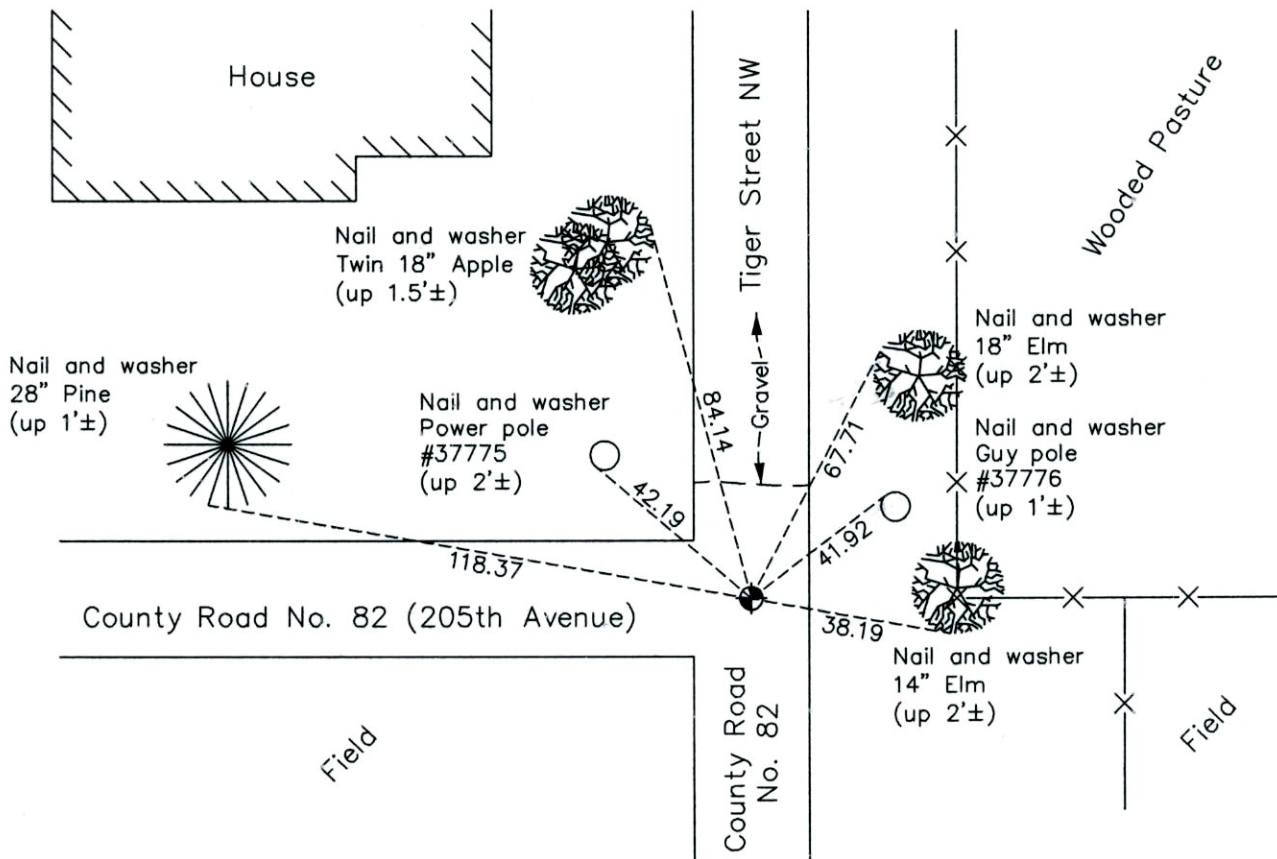
Northeast Corner of Sec. 19 Township 33 Range 25

On the 7th day of August, 1961, the described corner was evidenced by a 60d spike

and to perpetuate the location of said corner, at the exact location thereof, a permanent marker was placed consisting of a cast iron monument

AND on the 12th day of April, 2013, said permanent marker was found down 0.5'± and the ties were updated

Updated reference ties are as shown below.



N
W ANOKA COUNTY SURVEYOR E
S

Revision Date
2/04/14

N.A.D. 1983 Coordinates
(1996 Adjustment)

County Project Coordinates	
Northing	212117.0629
Easting	442332.6745
Date	9/03/02

I hereby certify that this United States public land survey monument record is correct and complete to the best of my knowledge and belief.

Larry D. Hoium Date 2/04/14

Larry D. Hoium, Anoka County Surveyor
Minnesota License Number 18165

CERTIFICATE OF LOCATION OF GOVERNMENT CORNER

County of Anoka

State of Minnesota

Northeast Corner of Sec. 19 Township 33 Range 25

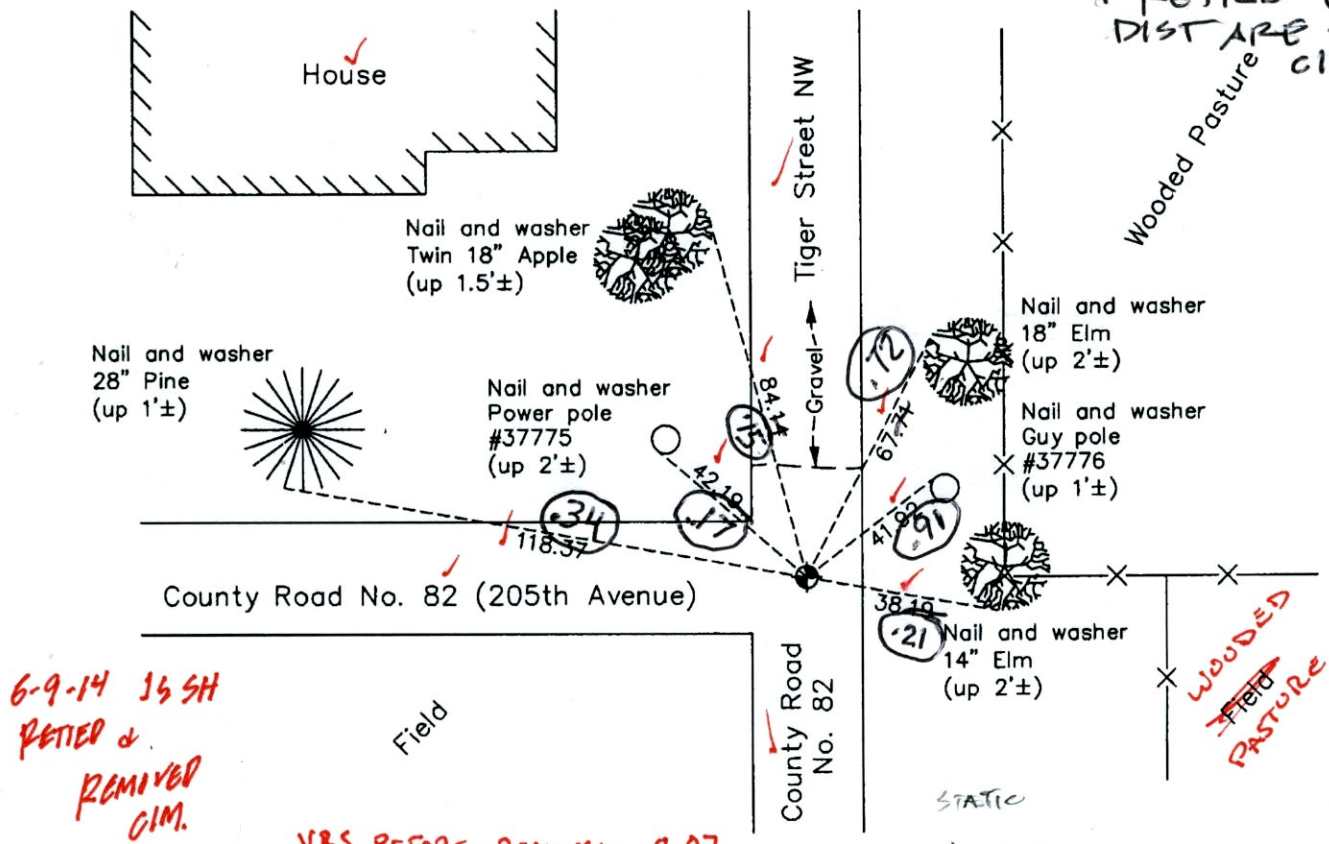
On the 7th day of August, 1961, the described corner was evidenced by a 60d spike

and to perpetuate the location of said corner, at the exact location thereof, a permanent marker was placed consisting of a cast iron monument

AND on the 12th day of April, 2013, said permanent marker was found down 0.5'± and the ties were updated

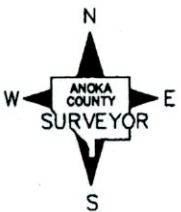
Updated reference ties are as shown below.

7-10-14 JS SH SS
RESET C.I.M., VRS'D
& RETIED CIRCLE
DIST ARE TO NEW
C.I.M



6-9-14 JS SH
RETIED &
REMOVED
C.I.M.

VRS BEFORE REMOVAL 0.07
N: 212117.0953
E: 442332.7005
N.A.D. 1983 Coordinates
(1996 Adjustment)



Revision Date
2/04/14

County Project Coordinates	
Northing	212117.0629
Easting	442332.6745
Date	9/03/02

I hereby certify that this United States public land survey monument record is correct and complete to the best of my knowledge and belief.

Larry D. Hoium date 2/04/14

Larry D. Hoium, Anoka County Surveyor
Minnesota License Number 18165

3D Q = 0.06

N: 212117.0348
E: 442332.6000

CERTIFICATE OF LOCATION OF GOVERNMENT CORNER

County of Anoka

State of Minnesota

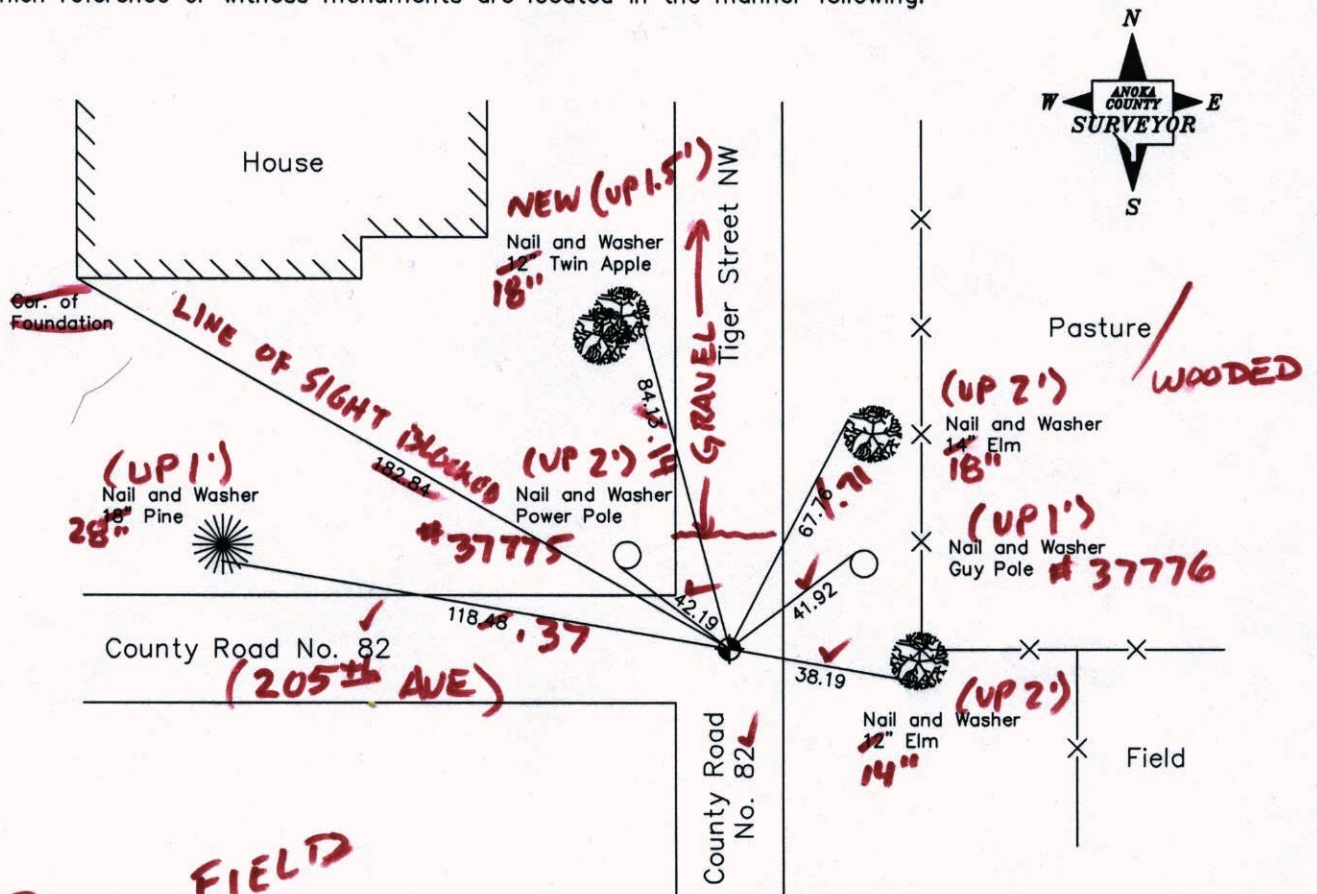
Northeast Corner of Sec. 19, Township 33, Range 25

I hereby certify that on the 7th day of August, 1961, I found the described corner which was evidenced by 60D spike

and I further certify that to perpetuate the location of said corner, I did, at the exact location thereof, place a permanent marker consisting of a cast iron monument

(DOWN 0.5) COULD BE RAISED

which reference or witness monuments are located in the manner following:



4-12-13
SS-SH
T/T-VRS

Revised date

8-26-88
6-28-94

N.A.D. 1983 Co-ordinates
(1996 Adjustment)

County Project Co-ordinates		State Plane Co-ordinates	
Northing	212117.0629	Y	
Easting	442332.6745	X	

Date 9-3-02

VRS 3DQ = 0.04 N = 212117.0839 E = 442332.6718

CERTIFICATE OF LOCATION OF GOVERNMENT CORNER

County of Anoka

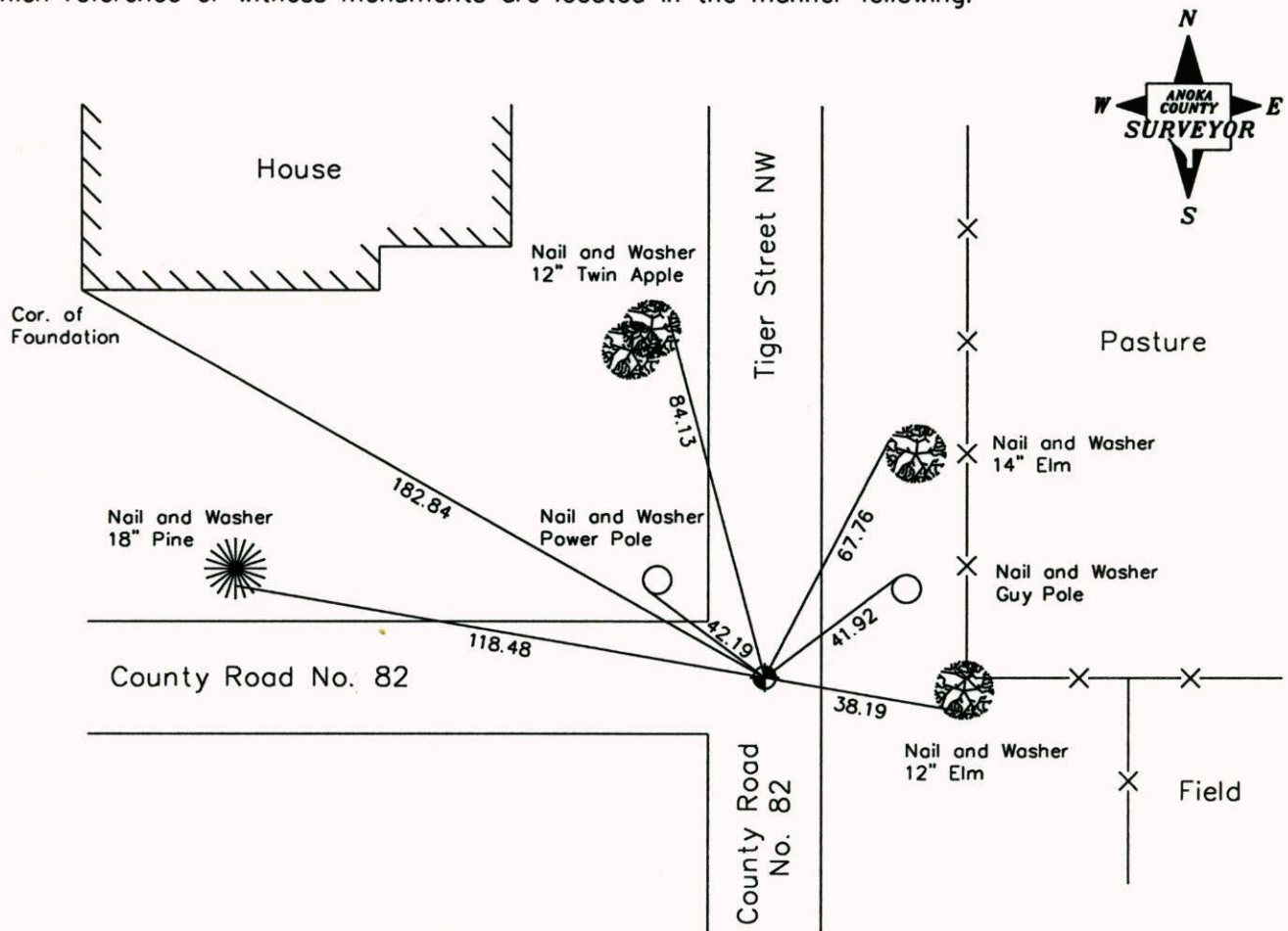
State of Minnesota

Northeast Corner of Sec. 19, Township 33, Range 25

I hereby certify that on the 7th day of August, 1961, I found the described corner which was evidenced by 60D spike

and I further certify that to perpetuate the location of said corner, I did, at the exact location thereof, place a permanent marker consisting of a cast iron monument

which reference or witness monuments are located in the manner following:



Revised date

8-26-88
6-28-94

N.A.D. 1983 Co-ordinates
(1996 Adjustment)

County Project Co-ordinates	
Northing	212117.0629
Easting	442332.6745

State Plane Co-ordinates	
Y	_____
X	_____

Date 9-3-02

CERTIFICATE OF LOCATION OF GOVERNMENT CORNER

County of Anoka

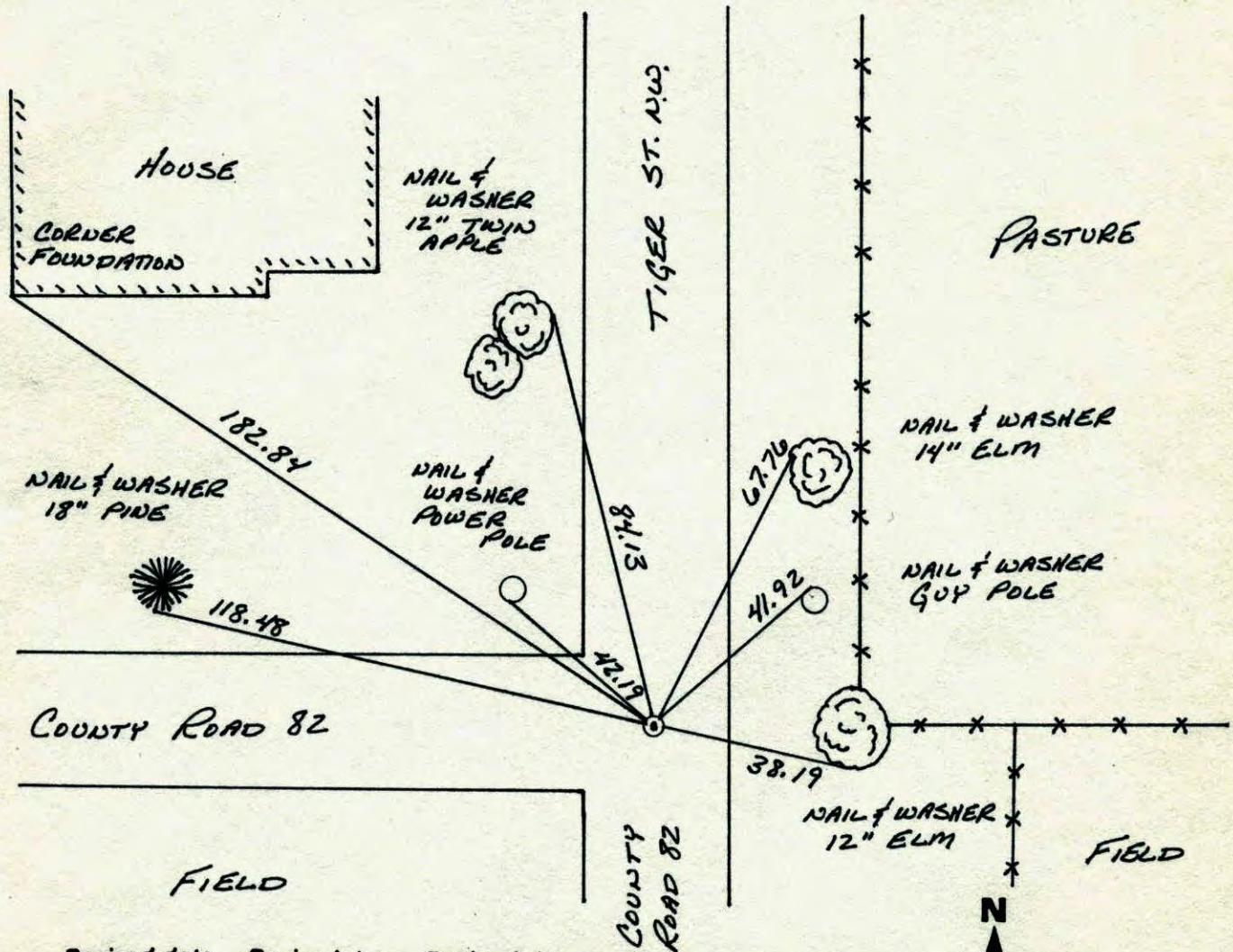
State of Minnesota

NORTHEAST Corner of Sec. 19 Township 33 Range 25

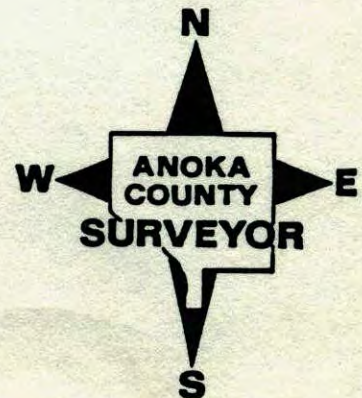
I hereby certify that on the 7 day of AUGUST, 1961, I found the described corner which was evidenced by 60 D SPIKE

and I further certify that to perpetuate the location of said corner, I did, at the exact location thereof, place a permanent marker consisting of CAST IRON MONUMENT

which reference or witness monuments are located in the manner following:

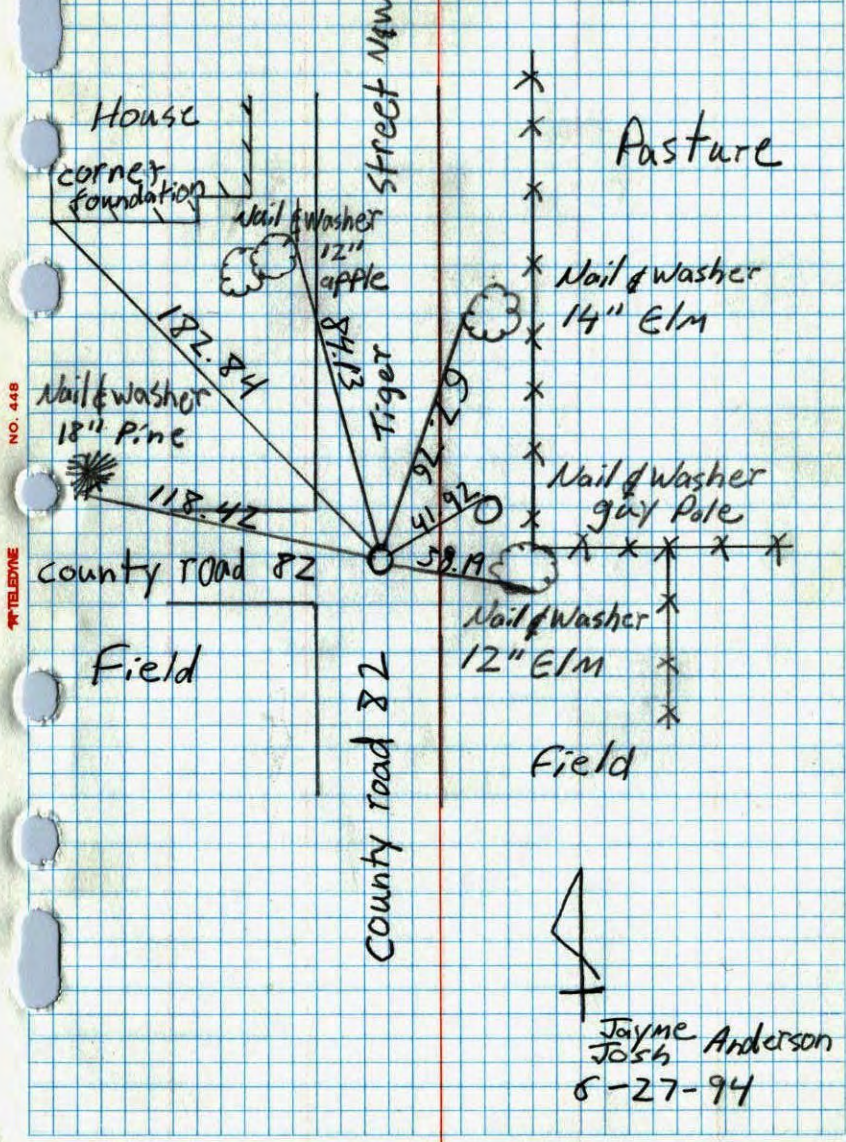


Revised date	Revised date	Revised date
8-26-88		
6-28-94		



NE 1/4 Sec. 19, T. 33 R. 25

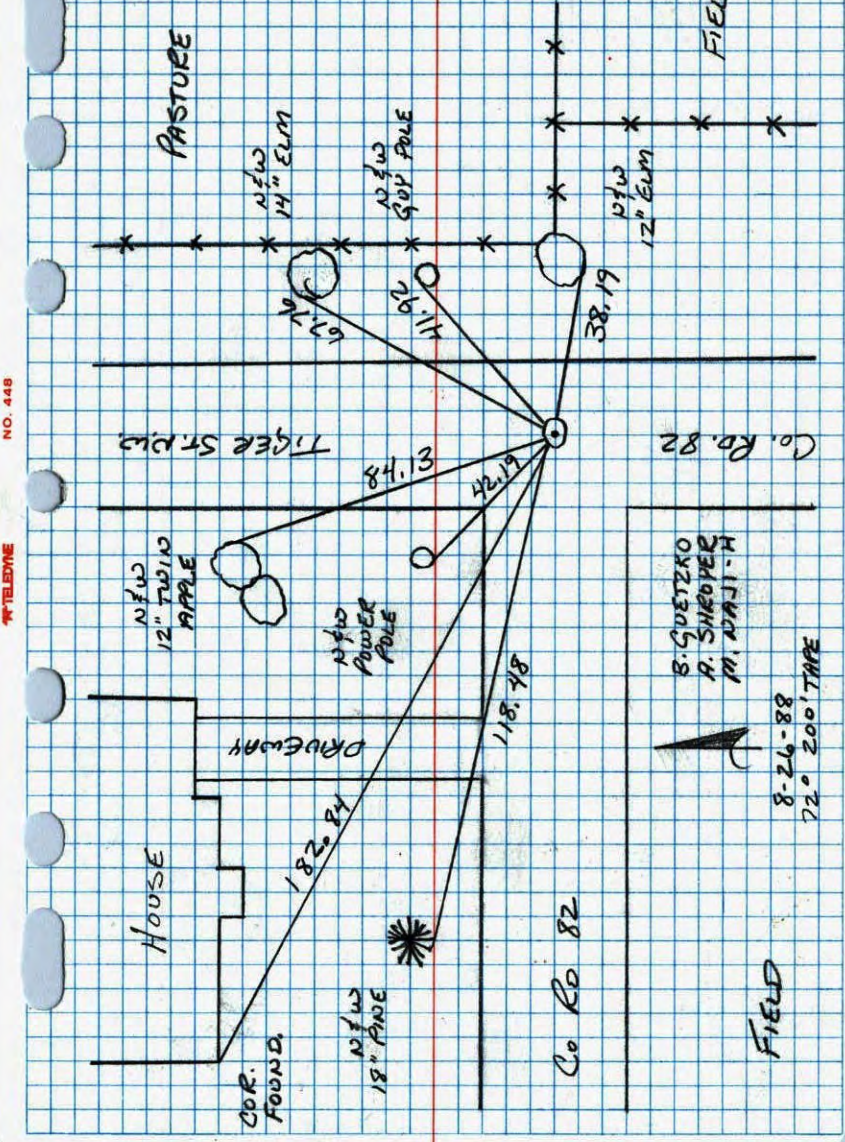
CAST IRON MONUMENT



Joyce Anderson
Josh
6-27-94

N.E. CORNER SEC 19 T33 R25

RETIRED CAST IRON MONUMENT



S. GUETZKO
R. SHROYER
M. NAMIJA

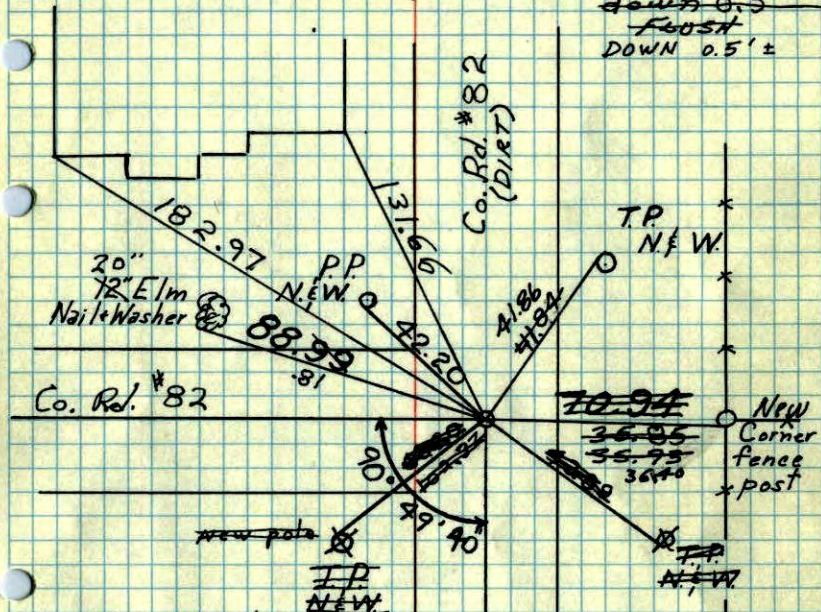
8-26-88
72° 20' TIME

August 7, 1961
Freeman, Anderson 68
+78°

NE. Corner Sec. 19, T-33, R-25

Burns
Set Cast Iron Monument in place
of 60 penny Spike Found.

down 0.5'±
FOOT
DOWN 0.5'±



Tie check
Aug. 5, 1965
M.D. Anderson
D. Dunlap

Additional ties taken
for construction
July 9, 1968

H. Larson TIE CHECK
P. Pich 10-31-80
B. GUETZKO
D. NAGLAK

Tie Check
July 7, 1969
R. A. Olson TIE CHECK
B. N. Olson 7-30-82
TIE CHECK P. ROSS
7-26-76 P. Hornby
G. ADAMS
S. BREN
J. STEPHENS

TEMPERATURE CORRECTED
AND HORIZONTALLY
TAPED MEASUREMENTS

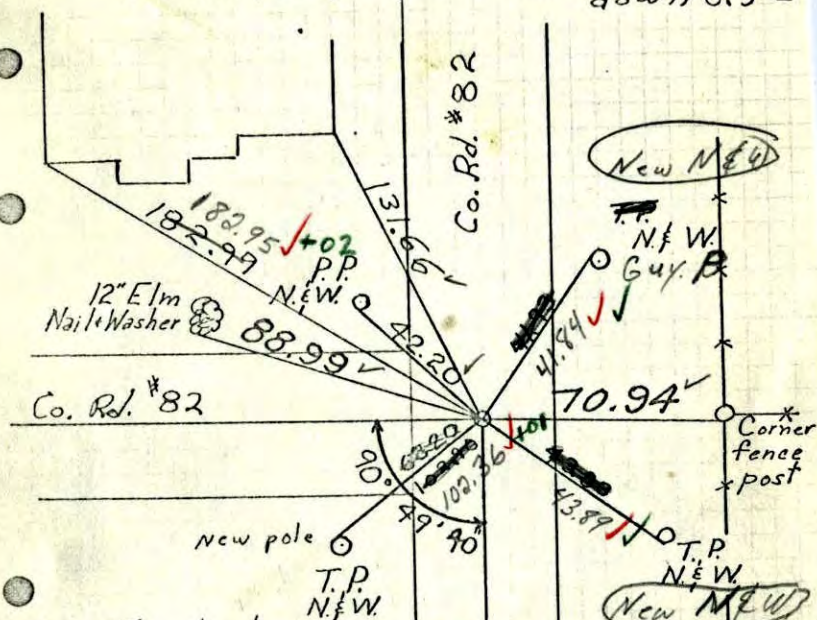
Tie Check
July 25, 1973
B. Olson
D. Brien
D. Farmer

ROLAND W. ANDERSON
COUNTY SURVEYOR
ANOKA COUNTY, MINNESOTA

August 7, 1961
Freeman, Anderson 2
+78°

NE. Corner Sec. 19, T-33, R-25

Burns
Set Cast Iron Monument in place
of 60 penny Spike Found. down 0.5'±



Tie check
Aug. 5, 1965
M.D. Anderson
D. Dunlap

Additional ties taken
for construction
July 9, 1968
H. Larson
P. Pich

CI Gone due Const.
Set CI as ties
7-7-69
Temp 70°
Tape #5
R.A. Olson
B.N. Olson

TEMPERATURE CORRECTED
AND HORIZONTALLY
TAPED MEASUREMENTS

ROLAND W. ANDERSON
COUNTY SURVEYOR
ANOKA COUNTY, MINNESOTA

NE Sec. 19-T33-R25
S.W. Sec. 17 Burns

Took additional ties for
construction. Removed C.T.
Replace After const.

N.W.
12" elm

88.99 ✓✓

70.94 ✓✓

N.W. COR.
Fence
Post

47 ✓ 68 ✓

July 9, 1968

H. Larson
P. Pich

Entered

7 Aug. 1961
Freeman Anderson
+78°

NE Cor Sec 19-33-25

Set Cast Iron Mon in place of
60 penny Spike.

