

CERTIFICATE OF LOCATION OF GOVERNMENT CORNER

County of Anoka

State of Minnesota

Northwest Corner of Sec. 19 Township 33 Range 25

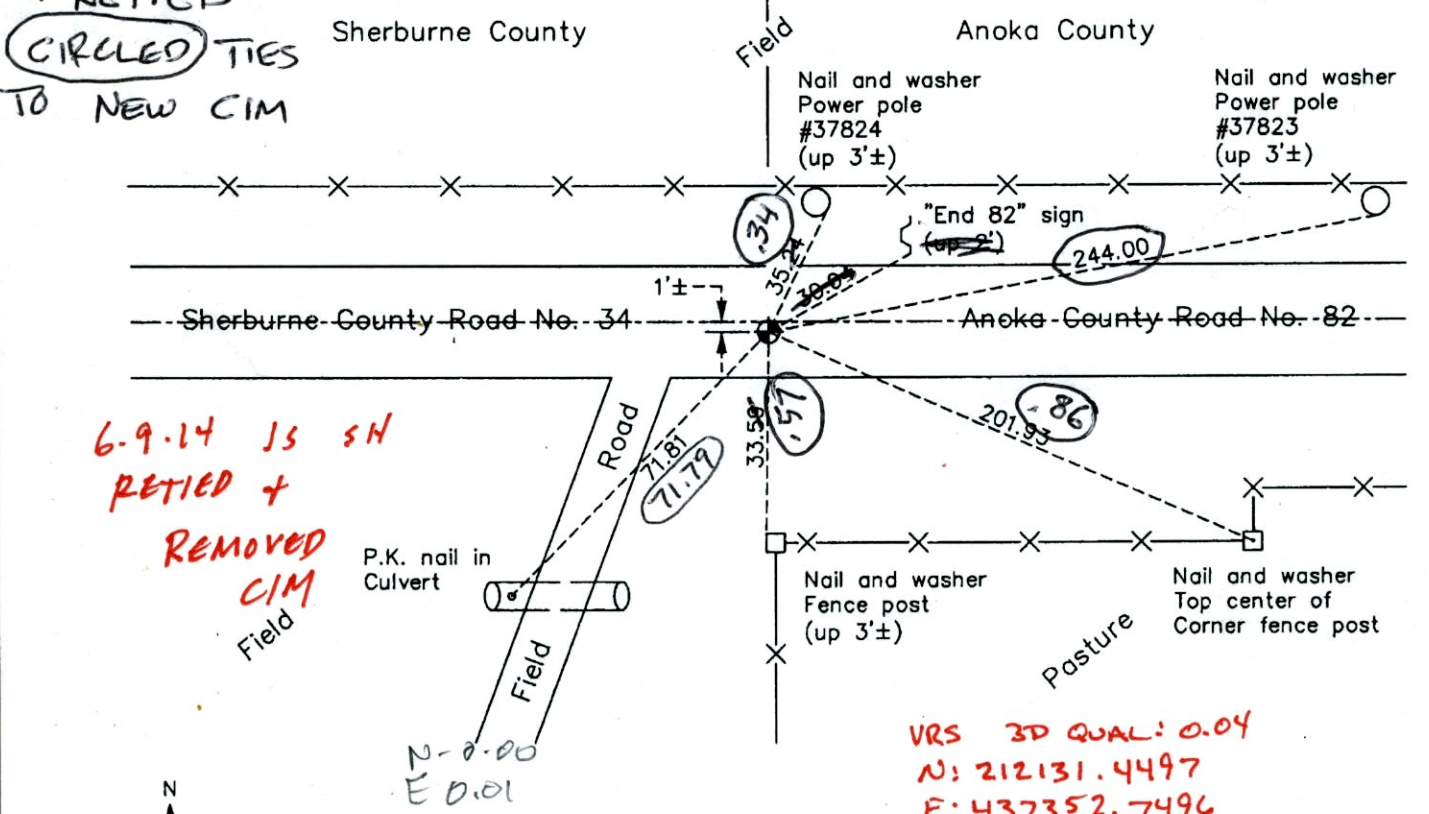
On the 17th day of July, 1970, the described corner was evidenced by Sherburne
County cast iron monument

and to perpetuate the location of said corner, at the exact location thereof, a permanent marker was placed consisting of the same cast iron monument

AND on the 31st day of October, 2013, said permanent marker was replaced with an Anoka
County cast iron monument after replacement of nearby culvert and the ties were updated

Updated reference ties are as shown below.

7-10-14 JS SH SS
SET CIM, VRS'D
+ RETIED
CIRCLED TIES
TO NEW CIM



6-9-14 JS SH
RETIED +
REMOVED
CIM
Field

VRS 3D QUAL: 0.04
N: 212131.4497
E: 437352.7496

N
W ANOKA COUNTY SURVEYOR E
S

Revision Date
2/05/14

N.A.D. 1983 Coordinates
(1996 Adjustment)

County Project Coordinates	
Northing	212131.4550
Easting	437352.7462
Date	8/21/02

I hereby certify that this United States public land survey monument record is correct and complete to the best of my knowledge and belief.

[Signature] Date 2/05/14

Larry D. Hoium, Anoka County Surveyor
Minnesota License Number 18165

300 = 0.06
N: 212131.4870
E: 437352.7044

CERTIFICATE OF LOCATION OF GOVERNMENT CORNER

County of Anoka

State of Minnesota

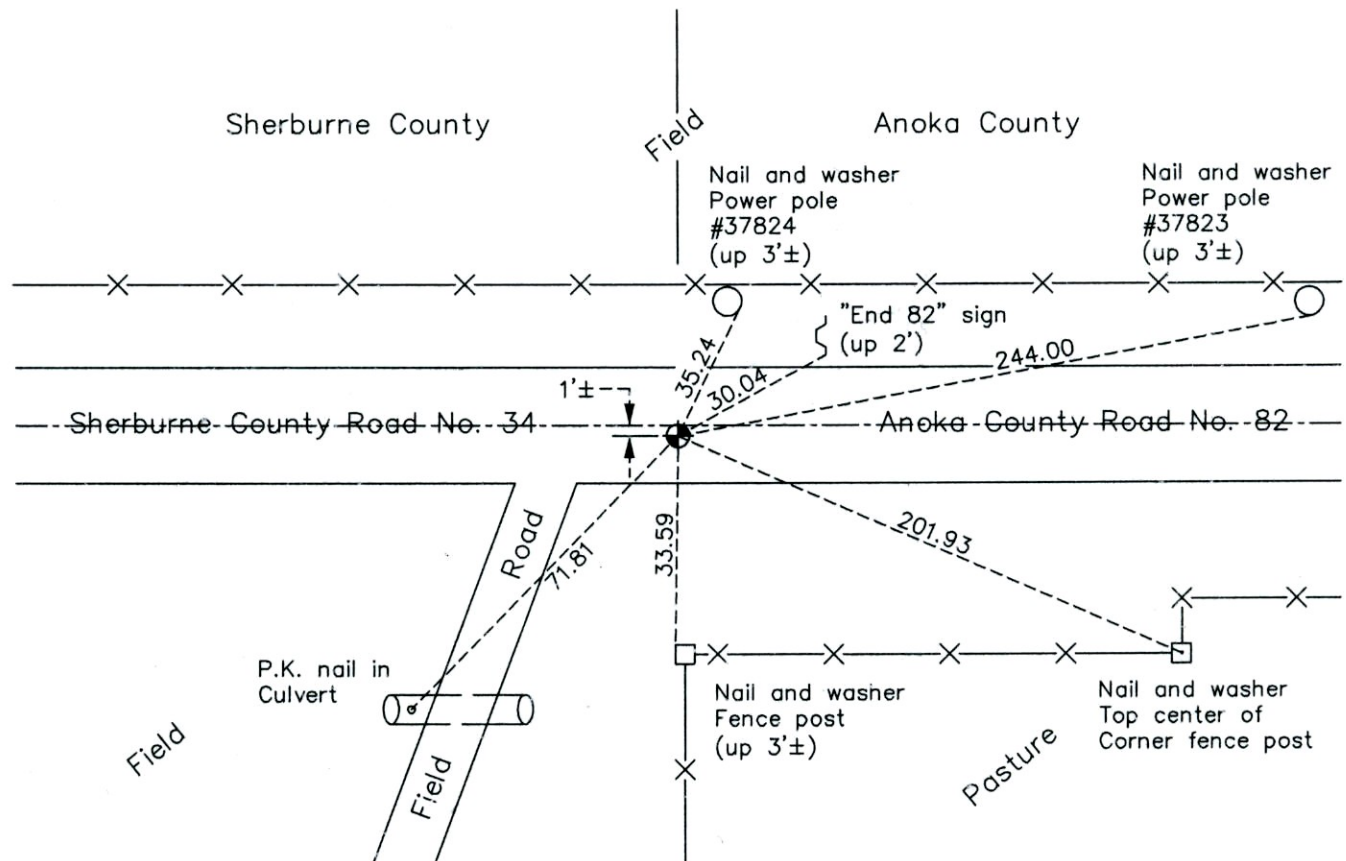
Northwest Corner of Sec. 19 Township 33 Range 25

On the 17th day of July, 1970, the described corner was evidenced by Sherburne
County cast iron monument

and to perpetuate the location of said corner, at the exact location thereof, a permanent marker
was placed consisting of the same cast iron monument

AND on the 31st day of October, 2013, said permanent marker was replaced with an Anoka
County cast iron monument after replacement of nearby culvert and the ties were updated

Updated reference ties are as shown below.



N
W ANOKA COUNTY SURVEYOR E
S

Revision Date
2/05/14

N.A.D. 1983 Coordinates
(1996 Adjustment)

County Project Coordinates	
Northing	212131.4550
Easting	437352.7462
Date	8/21/02

I hereby certify that this United States public land survey monument record is correct and complete to the best of my knowledge and belief.

Larry D. Hoium Date 2/05/14

Larry D. Hoium, Anoka County Surveyor
Minnesota License Number 18165

CERTIFICATE OF LOCATION OF GOVERNMENT CORNER

County of Anoka

State of Minnesota

Northwest Corner of Sec. 19, Township 33, Range 25

I hereby certify that on the 17th day of July, 1970, I found the described corner which was evidenced by ~~Sherburne~~ ^{Anoka} County cast iron monument

and I further certify that to perpetuate the location of said corner, I did, at the exact location thereof, place a permanent marker consisting of a cast iron monument 1' ± S. of E

which reference or witness monuments are located in the manner following:

15.
SH.

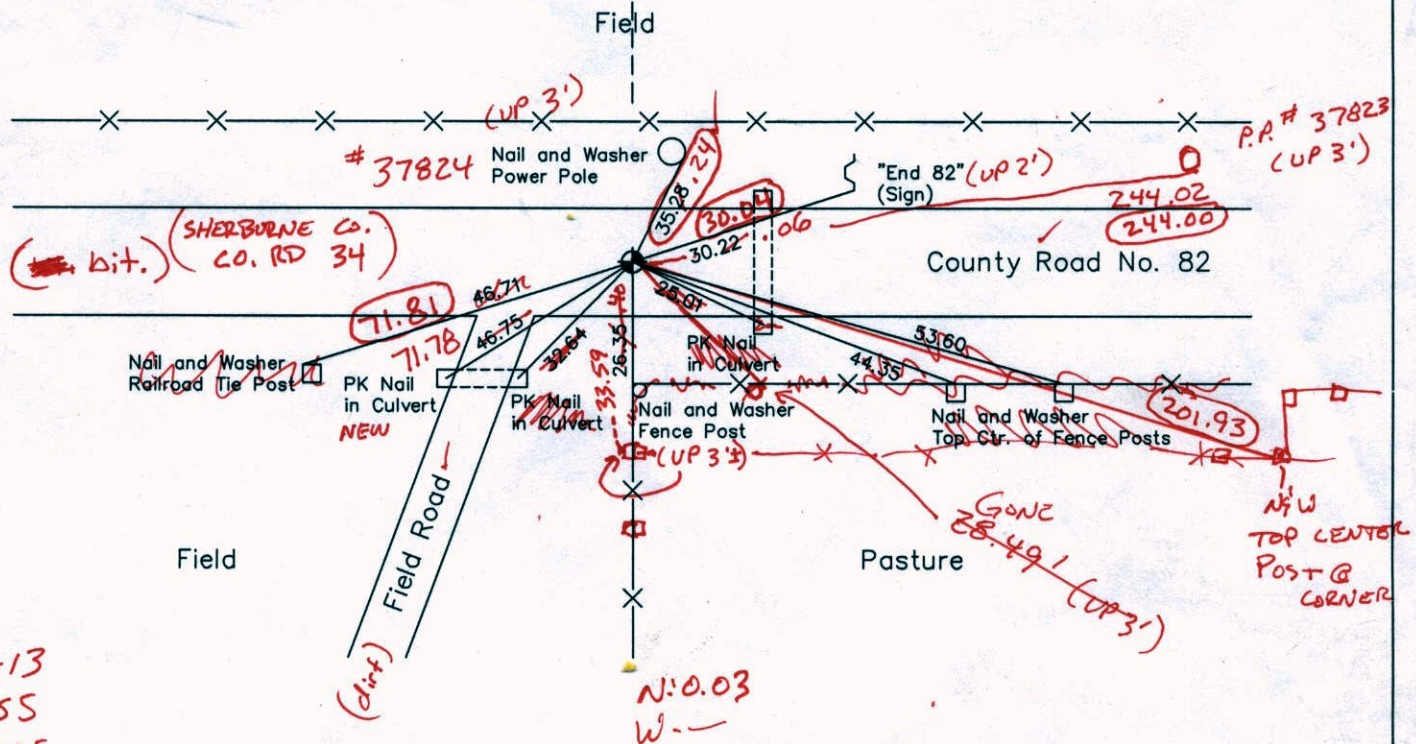
10-21-13
REMOVED FOR
NEW CULVERT

10/31/13 SH BK 55 - DISTANCES ARE CARRIED
3D: 0.05 RESET CIM DUE TO CULVERT REPLACE.
N: 212131.4472
E: 437352.7620



Sherburne County

Anoka County



10-11-13
BK-55
T/T - VRS

Revised date Revised date

7-17-70	8-26-88
8-3-73	
7-11-79	
7-30-82	
7-8-85	

County Project Co-ordinates	
Northing	212131.4550
Easting	437352.7462

State Plane Co-ordinates	
Y	
X	

Date 8-21-02

VRS 3DQ = 0.05

N = 212131.4364

E = 437352.7452

Point Id	Point Class	Date/Time	Northing	Easting	Ellip. Hgt.	Ortho. Hgt.	Geoid Sep.
<input checked="" type="checkbox"/> bob	Control	10/30/2013 10:31:14	199432.8567	466652.1222	-114.8831	902.6975	-1017.5806
<input checked="" type="checkbox"/> SEWER2	Control	10/30/2013 11:05:04	225161.4894	473754.4990	-100.9918	916.6673	-1017.6591
<input checked="" type="checkbox"/> NT70	Averaged	10/30/2013 12:11:14	212131.4233	437352.7499	-84.0039	933.4660	-1017.4699

CERTIFICATE OF LOCATION OF GOVERNMENT CORNER

County of Anoka

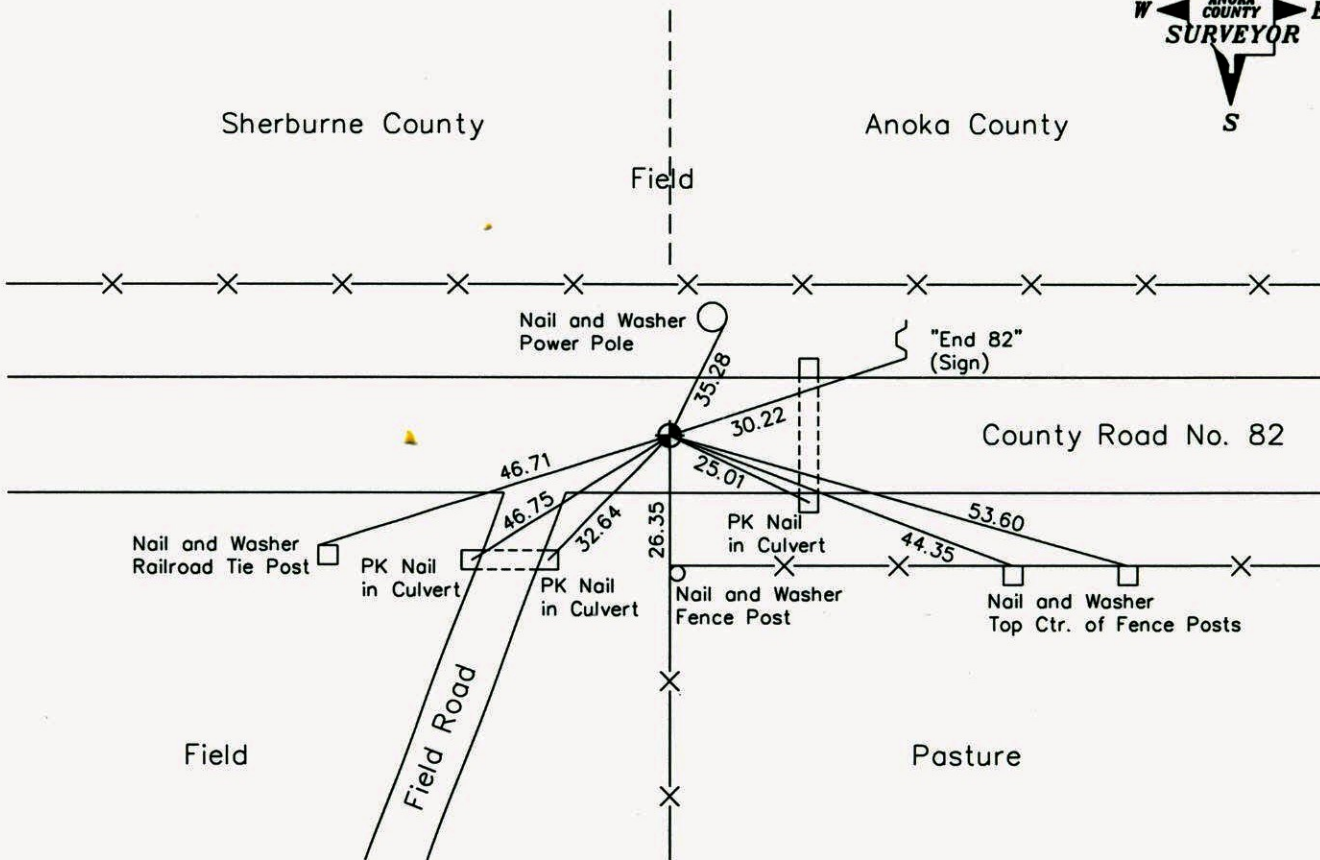
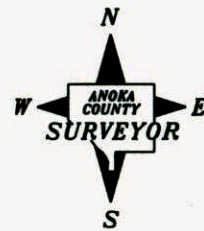
State of Minnesota

Northwest Corner of Sec. 19, Township 33, Range 25

I hereby certify that on the 17th day of July, 1970, I found the described corner which was evidenced by Sherburne County cast iron monument

and I further certify that to perpetuate the location of said corner, I did, at the exact location thereof, place a permanent marker consisting of a cast iron monument

which reference or witness monuments are located in the manner following:



Revised date Revised date

7-17-70	8-26-88
8-3-73	
7-11-79	
7-30-82	
7-8-85	

N.A.D. 1983 Co-ordinates
(1996 Adjustment)

County Project Co-ordinates	State Plane Co-ordinates
Northing <u>212131.4550</u>	Y _____
Easting <u>437352.7462</u>	X _____

Date 8-21-02

CERTIFICATE OF LOCATION OF GOVERNMENT CORNER

County of Anoka

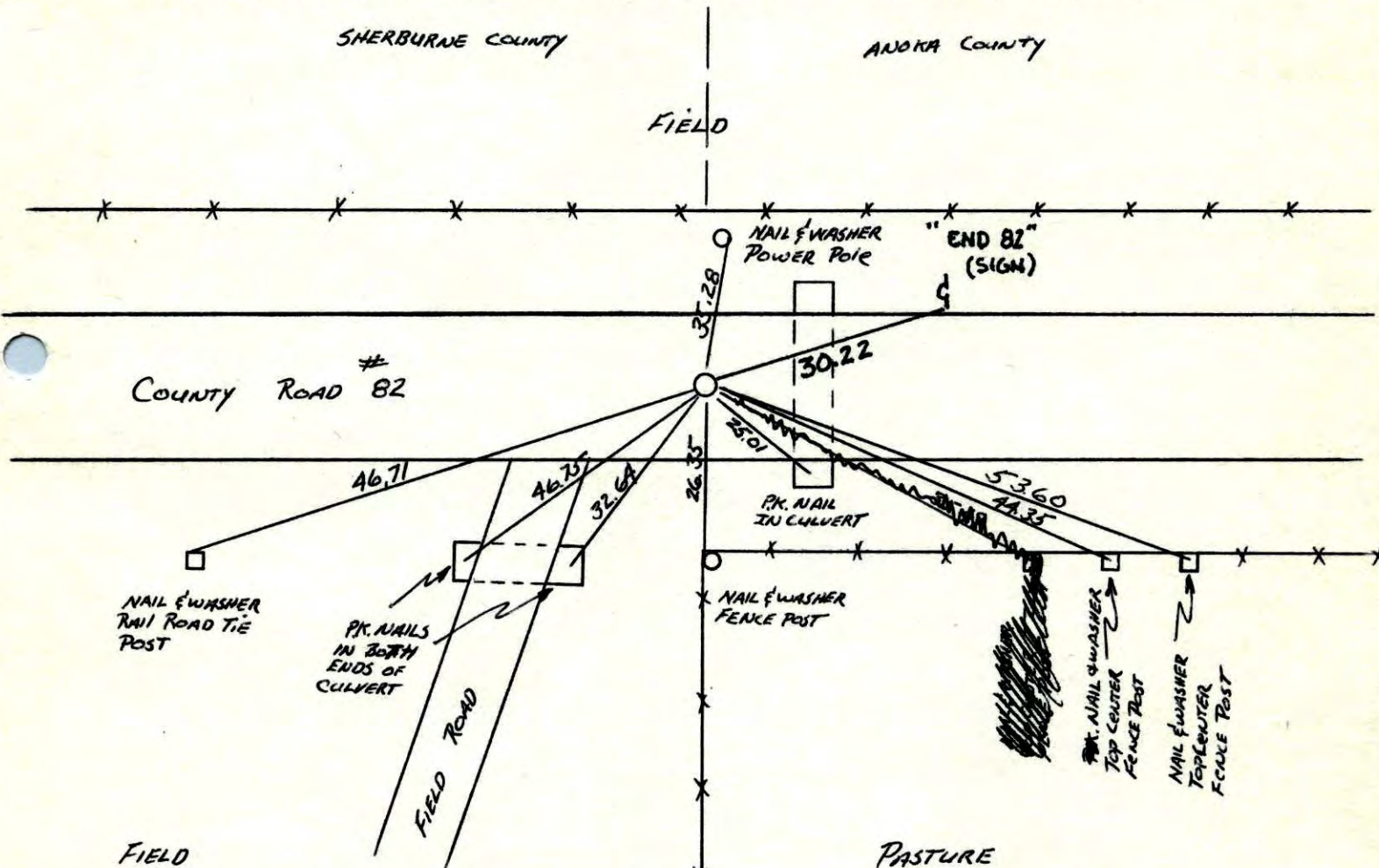
State of Minnesota

NORTHWEST Corner of Sec. 19 Township 33 Range 25

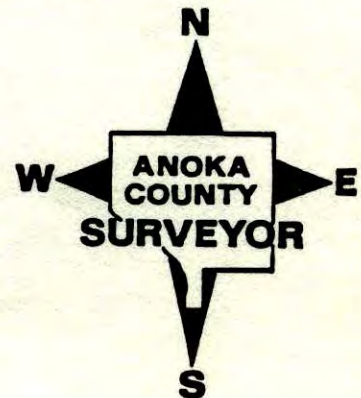
I hereby certify that on the 17TH day of July, 1970, I found the described corner which was evidenced by SHERBURNE COUNTY CAST IRON MONUMENT

and I further certify that to perpetuate the location of said corner, I did, at the exact location thereof, place a permanent marker consisting of CAST IRON MONUMENT

which reference or witness monuments are located in the manner following:

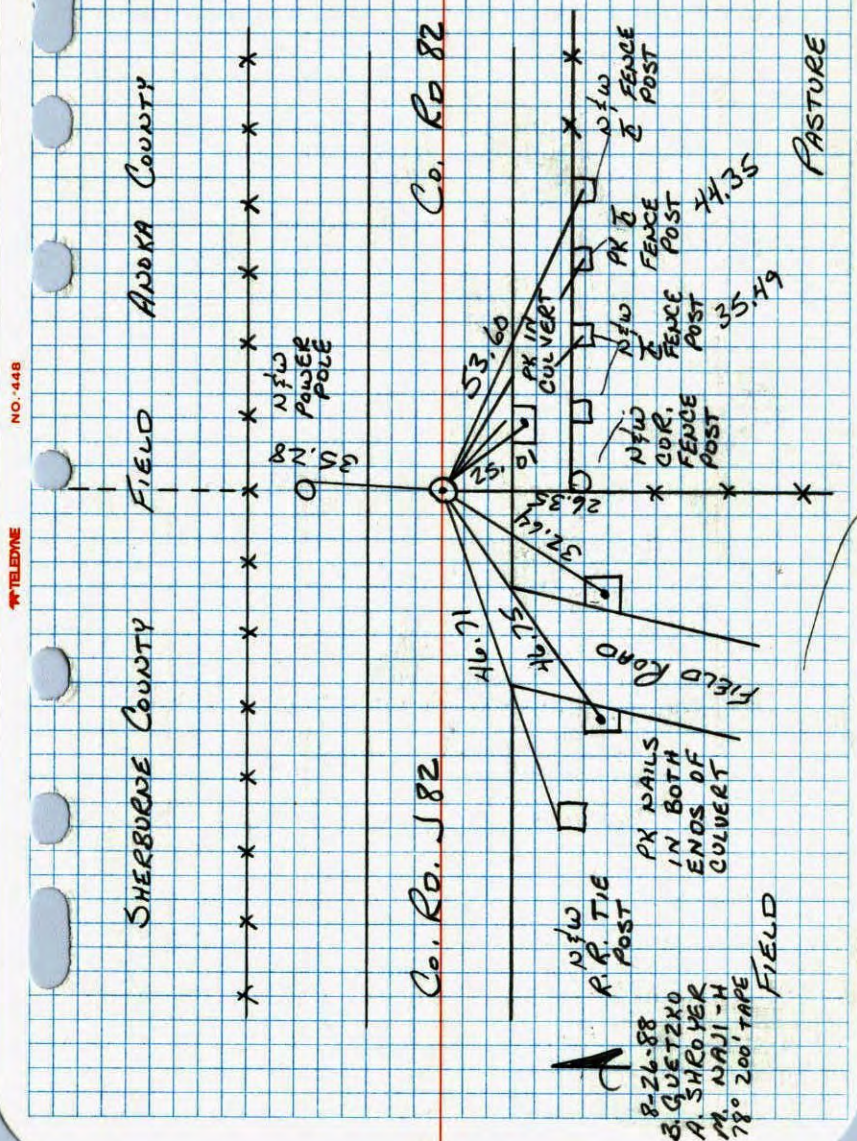


Revised date	Revised date	Revised date
7-17-70		
8-3-73		
7-11-79		
7-30-82		
7-8-85		
8-26-88		



N.W. CORNER SEC 19 T33 R25

RETIRED CAST IRON MONUMENT



N.W. CORNER SECTION 19-T33-R25

FOUND SHERBURNE COUNTY CAST IRON MONUMENT DOWN 1.8' FROM TIES. SET SHORT ANOKA COUNTY CAST IRON ON TOP

17 JUL 70

D. POWELL

R. BRIEN

REPLACED WITH REMOVABLE CAST IRON MONUMENT. PX'S

2.00' NORTH AND EAST.

3 AUG 73

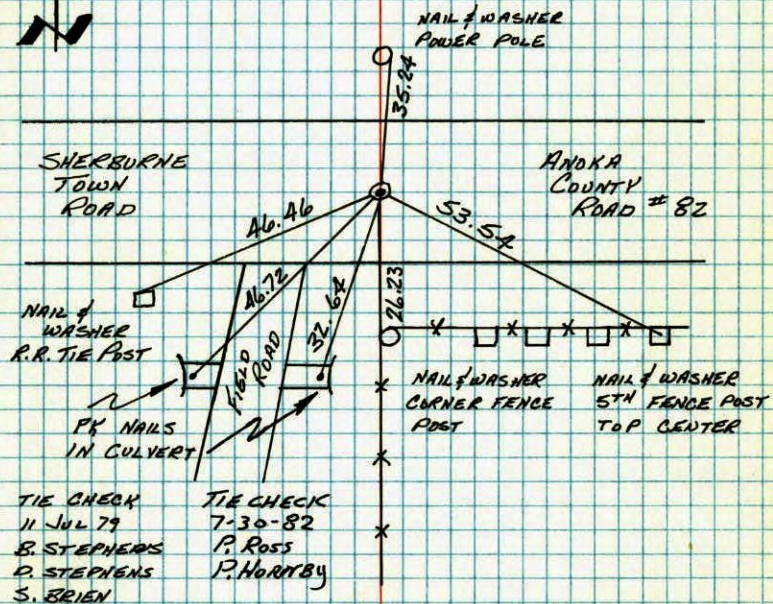
B. OLSON

D. BRIEN



NO. 448

TELEDYNE

TEMPERATURE CORRECTED
AND HORIZONTALLY
TAPED MEASUREMENTSROLAND W. ANDERSON
COUNTY SURVEYOR
ANOKA COUNTY, MINNESOTA

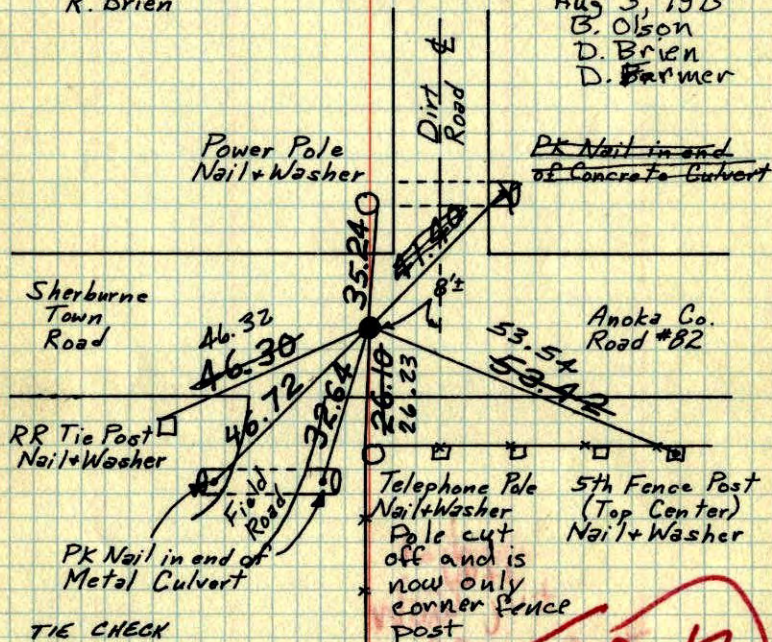
70

NW Cor. Sec. 19-T33-R25

Found Sherburne Co. Cast Iron Monument
down 1.8'± from ties. Set short Anoka County
Cast Iron Monument on top down 0.6'±.

July 17, 1970 Replaced with Removable
D. Powell cast Iron P.K.s NEE
R. Brien

Aug 3, 1973
B. Olson
D. Brien
D. Farmer



TIE CHECK
7-26-76
G. HOARMS
S. BRIEN
J. STEPHENS

SEE NEW TIES

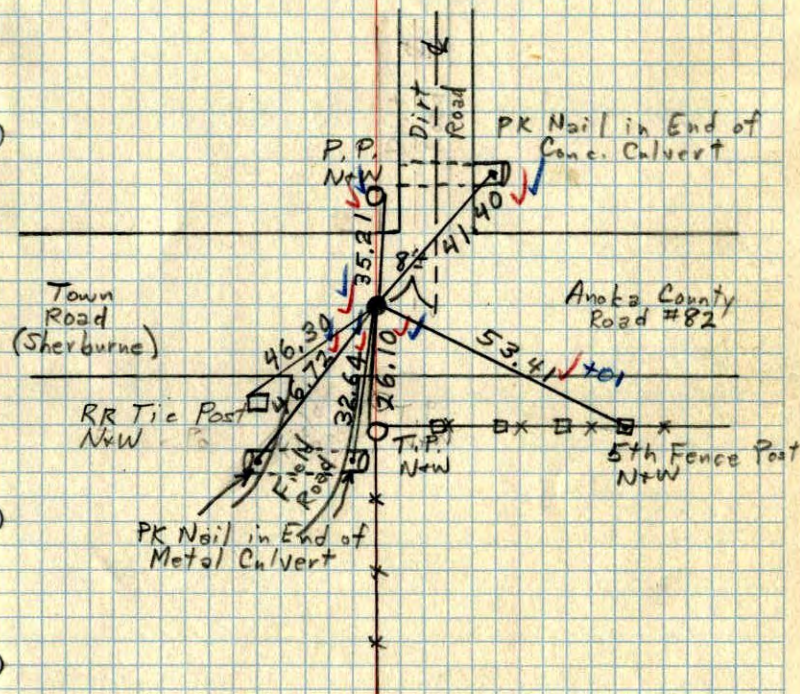
ROLAND W. ANDERSON
COUNTY SURVEYOR
ANOKA COUNTY, MINNESOTA

TEMPERATURE CORRECTED
AND HORIZONTALLY
TAPED MEASUREMENTS

NW Cor. Sec. 19-T33-R25

Found Sherburne Co. C.I. Mon down 1.8'±.
Set broken off Anoka Co. C.I. on top
down 0.6'±.

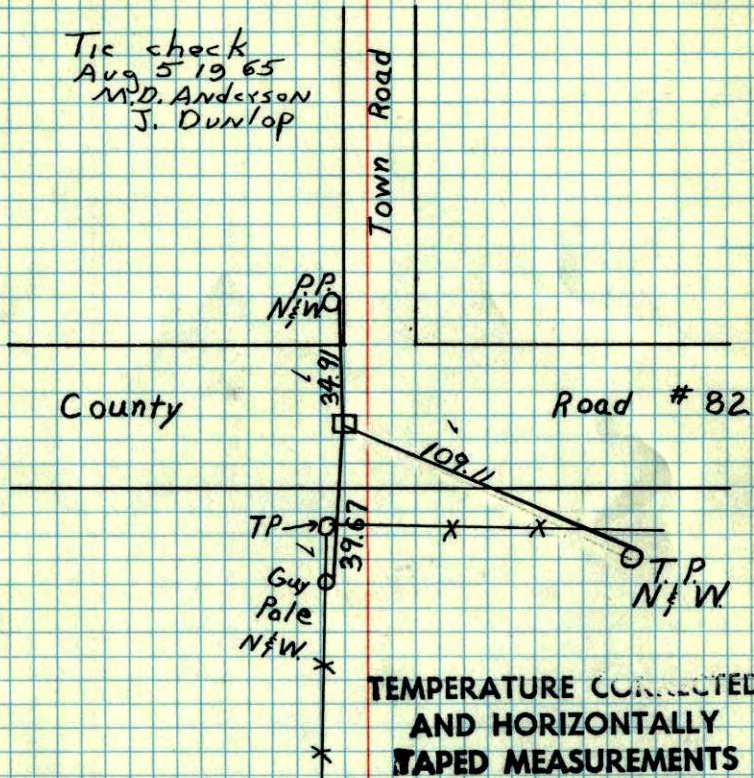
7/17/70
✓ #10-72 ✓
D. Powell
R. Brien



N.W. Cor. Sec 19-33-25

Found 6" x 6" Granite Mon.
1/2" iron on N face of Mon.

Tic check
Aug 5 1965
M.D. Anderson
J. Dunlop



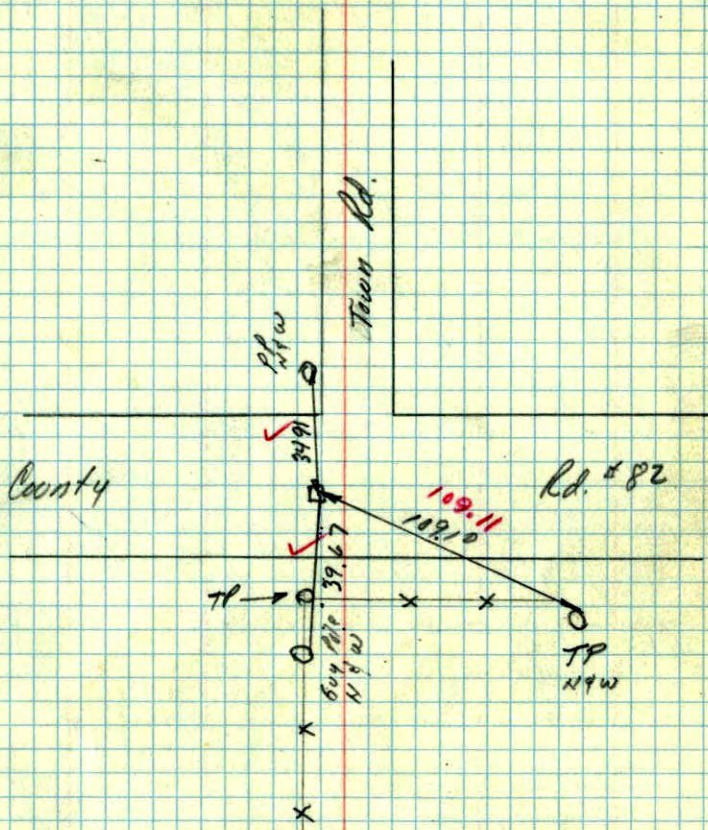
July 3, 1961

Freeman Anderson

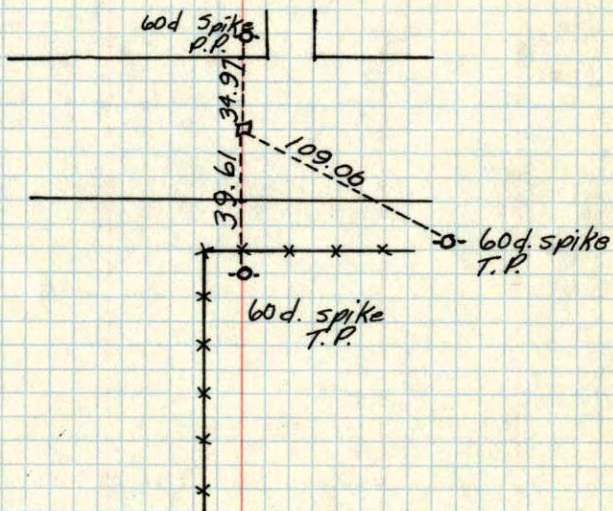
ROLAND W. ANDERSON
COUNTY SURVEYOR
KNOX COUNTY, MINNESOTA

NW Cor Sec 19-33-25 Burns.

Found 6" x 6" Granite Mon. 1/2" iron on N
Face of Mon.

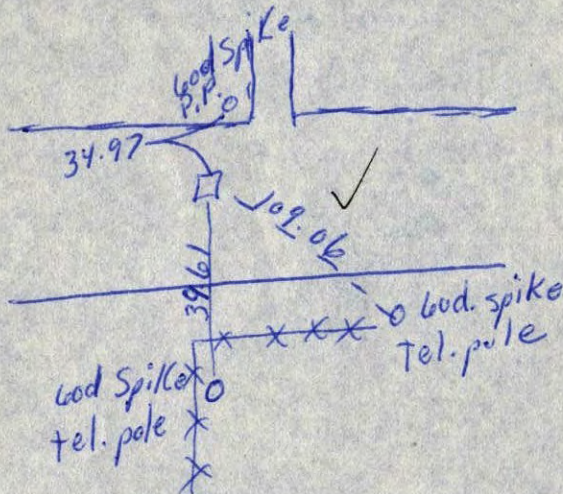


NW Cor. Sec. 19, T33, R25
6" Sq. Granite Mon. 0.4' down



Casewell
10/20/58

NW Cor. Sec. 19 T33R25
6" Sq. Granite Mon. 0.4' down



10/20/58

NW 19, 33, 25

~~NE~~ cor. sec. 24, T35, R26.

Found STD: Granite Mon.

Flush with road surface set
CAST IRON MON DOWN .30

J. D.

L. F.

