

CERTIFICATE OF LOCATION OF GOVERNMENT CORNER

County of Anoka

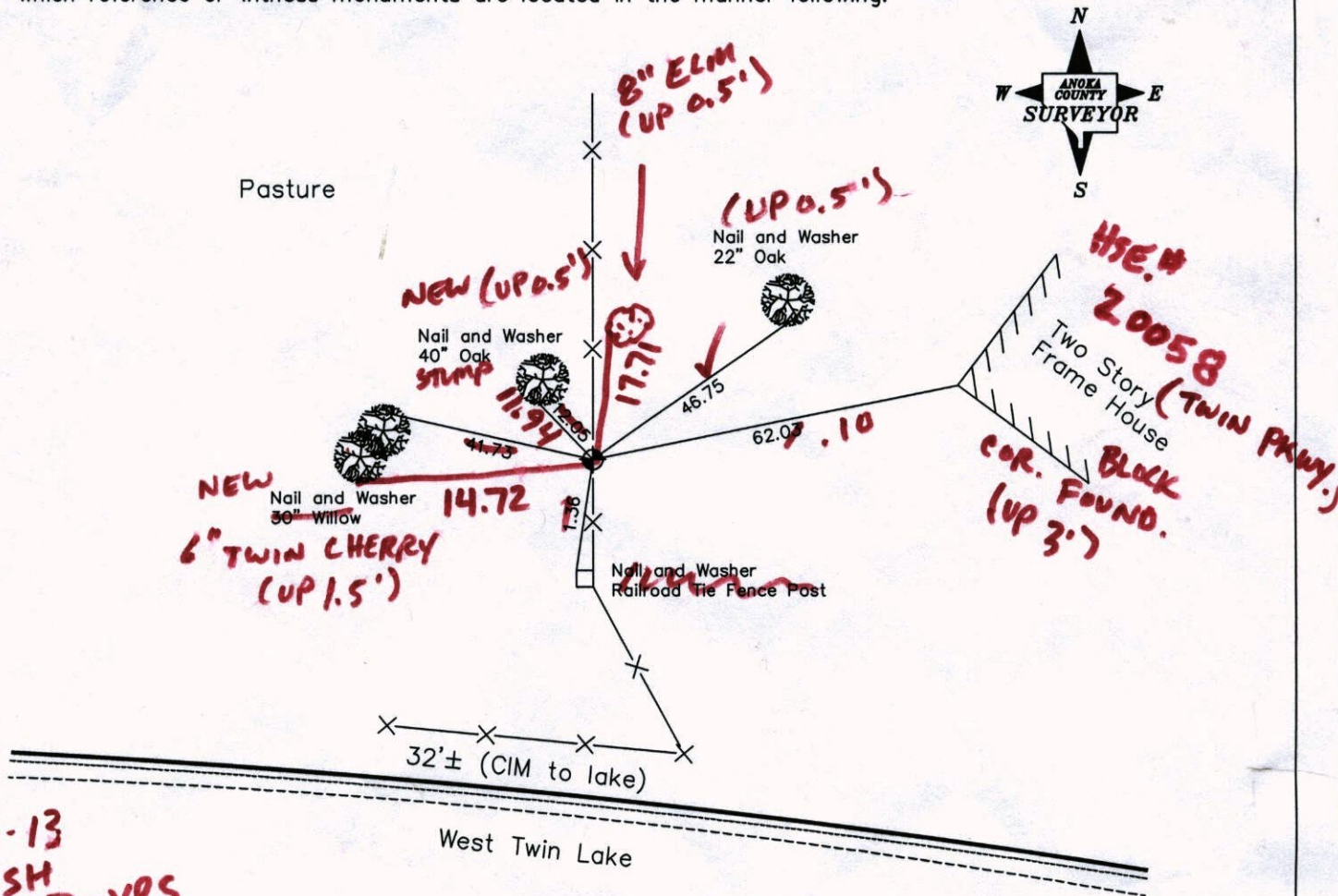
State of Minnesota

West 1/4 Corner of Sec. 19, Township 33, Range 25

I hereby certify that on the 19th day of November, 1963, I found the described corner which was evidenced by a cast iron monument set by Don Pepper

and I further certify that to perpetuate the location of said corner, I did, at the exact location thereof, place a permanent marker consisting of a cast iron monument (MIN. UP 0.3'±)

which reference or witness monuments are located in the manner following:



4-12-13
SS-SH
TAPED-VRS
 Revised date

7-8-85
9-2-88
6-8-94

N.A.D. 1983 Co-ordinates
 (1996 Adjustment)

County Project Co-ordinates		State Plane Co-ordinates	
Northing	209542.3169	Y	_____
Easting	437298.0604	X	_____

Date 10-30-02

VRS 3DQ = 0.05 N = 209542.3141 E = 437298.0319

CERTIFICATE OF LOCATION OF GOVERNMENT CORNER

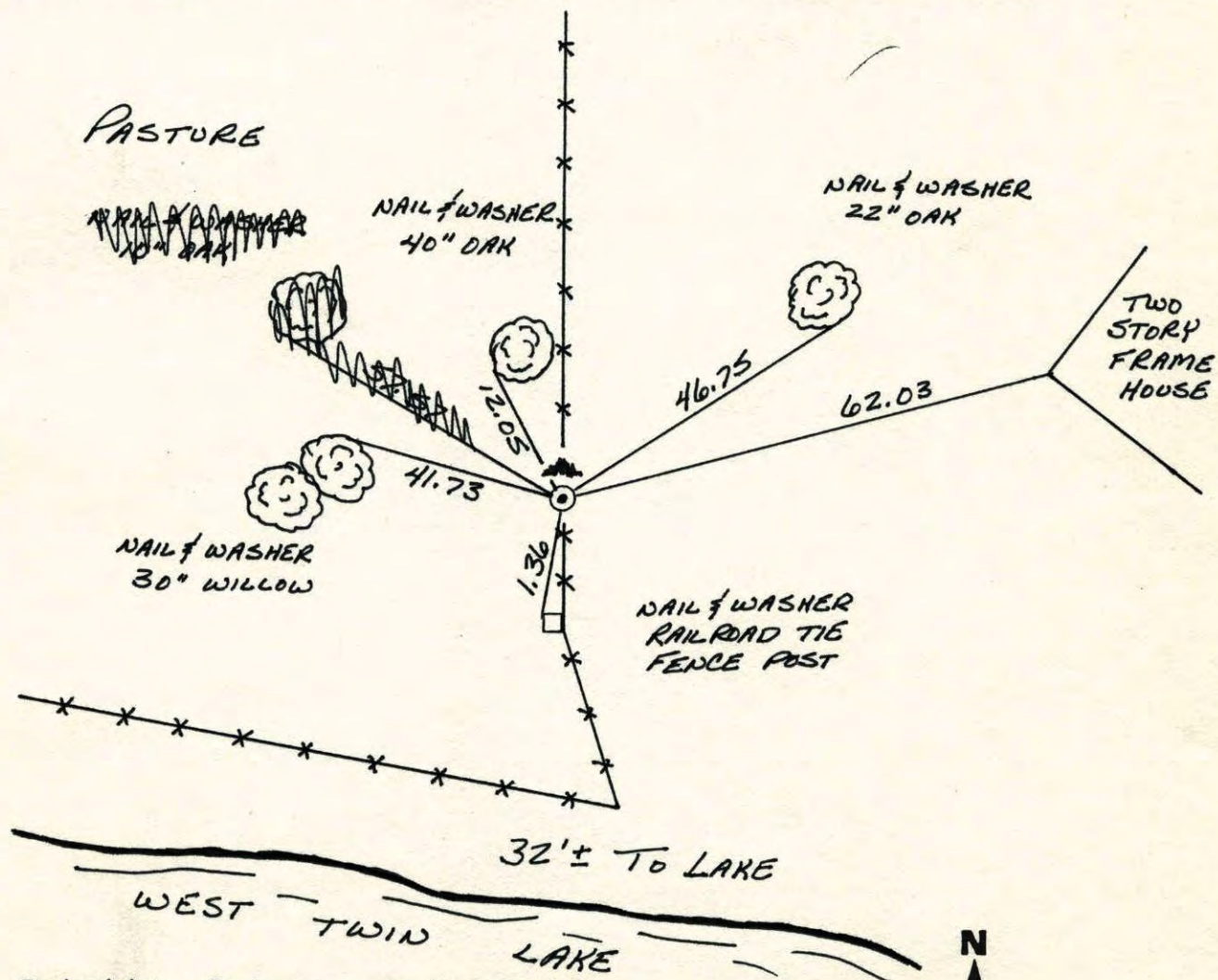
County of Anoka State of Minnesota

WEST 1/4 Corner of Sec. 19 Township 33 Range 2S

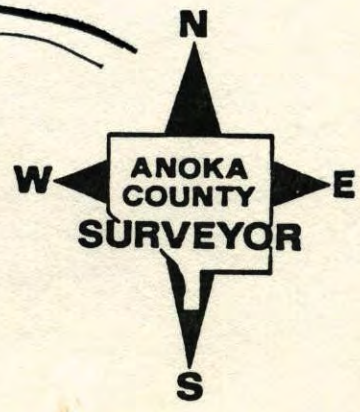
I hereby certify that on the 19 day of NOVEMBER, 1963, I found the described corner which was evidenced by CAST IRON MONUMENT SET BY DON PEPPER

and I further certify that to perpetuate the location of said corner, I did, at the exact location thereof, place a permanent marker consisting of CAST IRON MONUMENT

which reference or witness monuments are located in the manner following:

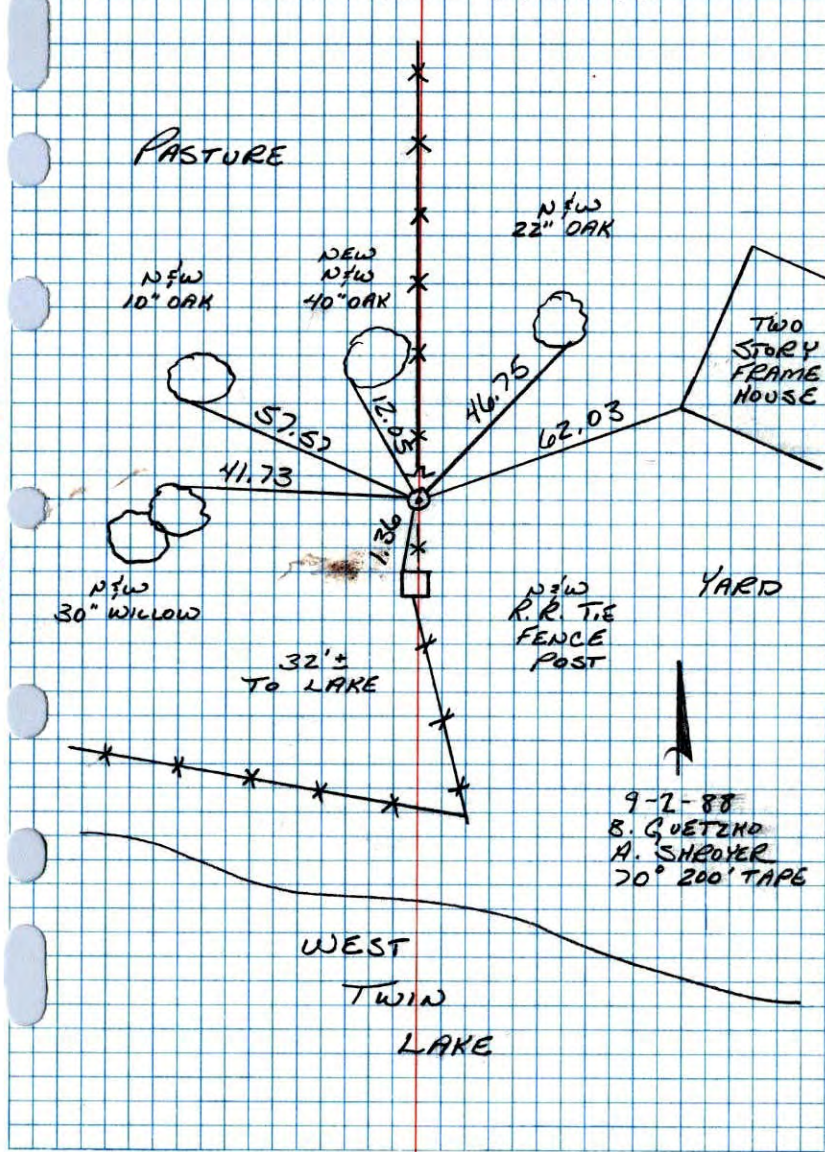


Revised date	Revised date	Revised date
7-8-85		
9-2-88		
6-8-94		



W 1/4 CORNER SEC 19 T33 R25

RETIRED CAST IRON MONUMENT

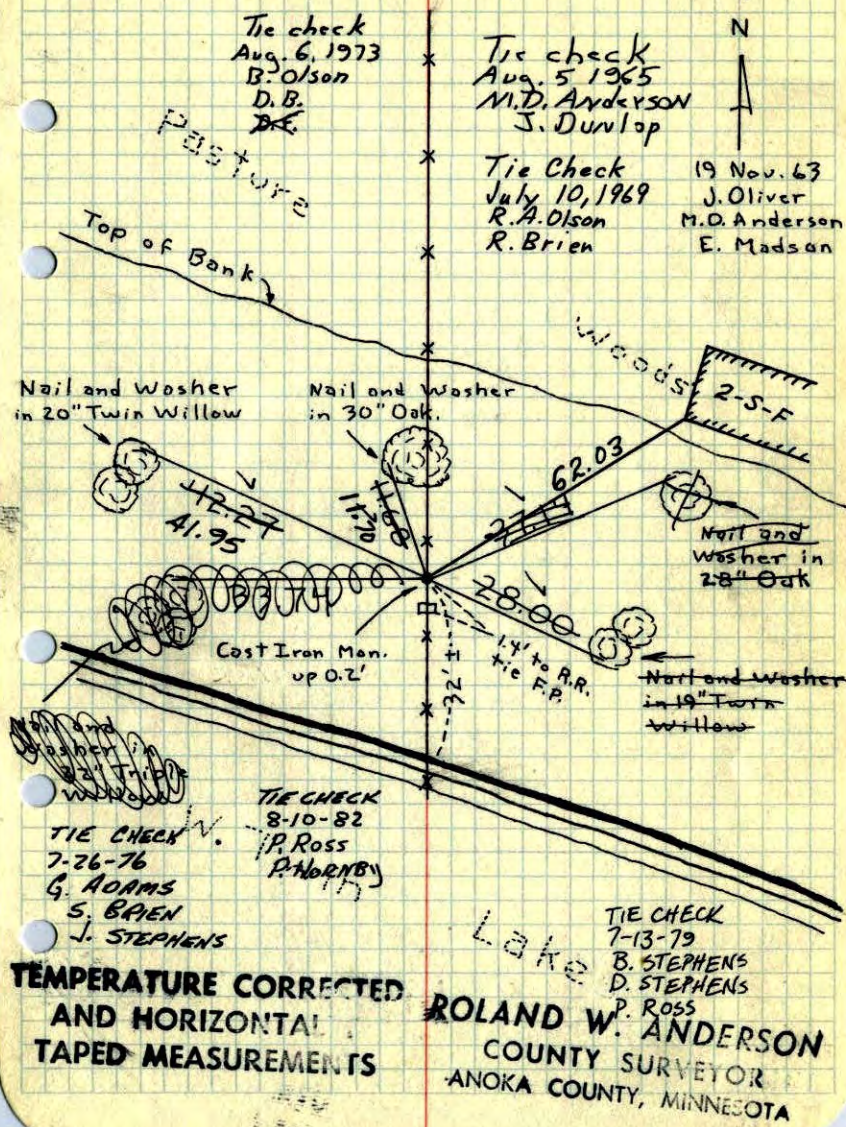


NO. 448 TELETYPE

W 1/4 Cor. Sec. 19, T33, R25

Found Cast Iron Monument Set by Don

Pepper, Sherburne County Surveyor. Up 0.2'



TEMPERATURE CORRECTED AND HORIZONTAL TAPED MEASUREMENTS

ROLAND W. ANDERSON
 COUNTY SURVEYOR
 ANOKA COUNTY, MINNESOTA

W 1/4 Cor. Sec. 19, T33, R25

Found Cast Iron Monument Set by Don

Pepper, Sherburne County Surveyor.

up .2'

Tie check
Aug. 5, 1965
M.D. Anderson
J. Dunlop



19 Nov. 63
J. Oliver
M.D. Anderson
E. Madson

Pasture

Top of Bank

Woods

2 stories
Frame House

Nail and Washer
in 20" Twin Willow

Nail and Washer
in 30" Oak

Nail and
Washer in
28" Oak

Cast Iron Mon.
up 0.2'

Nail and Washer
in 19" Twin
Willow

W. Twin

Lake

ROLAND W. ANDERSON
COUNTY SURVEYOR
ANOKA COUNTY, MINNESOTA

TEMPERATURE CORRECTED
AND HORIZONTAL
TAPED MEASUREMENTS

7-10-69
Temp 75
Top 45
RA-phon
R. B. S.

W 1/4 Cor. Sec. 19, T33, R25

Found Cast Iron Monument Set by Don
Pepper, Sherburne County Surveyor.

All remaining ties O.K.

tie check
Aug 5, 1965

19 Nov. 63
J. Oliver
M.D. Anderson
E. Madson

M.D. Anderson
J. Dunlop

Pasture

Top of Bank

Woods

Nail and Washer
in 20" Twin Willow

Nail and Washer
in 30" Oak

Nail and
washer in
28" Oak

Cast Iron Mon.
up 0.2'

Nail and Washer
in 19" Twin
Willow

Nail and
washer in
27" Triple
Willow

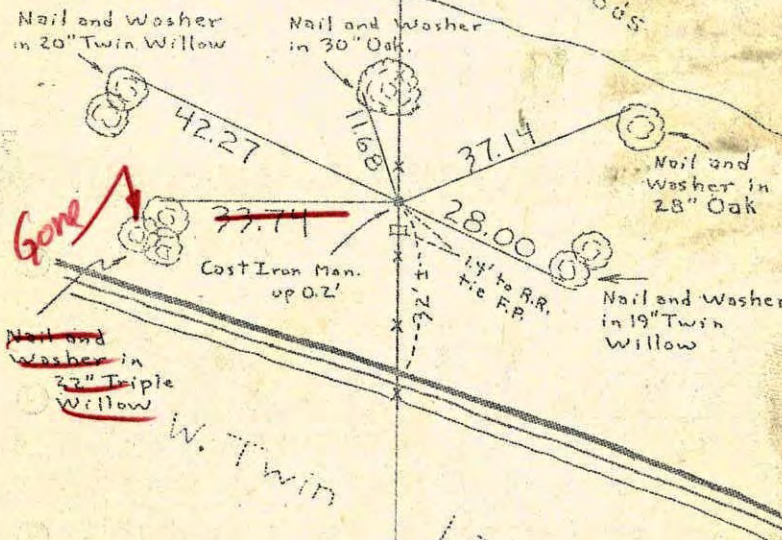
W. Twin

Lake

TEMPERATURE CORRECTED
AND HORIZONTAL
TAPED MEASUREMENTS

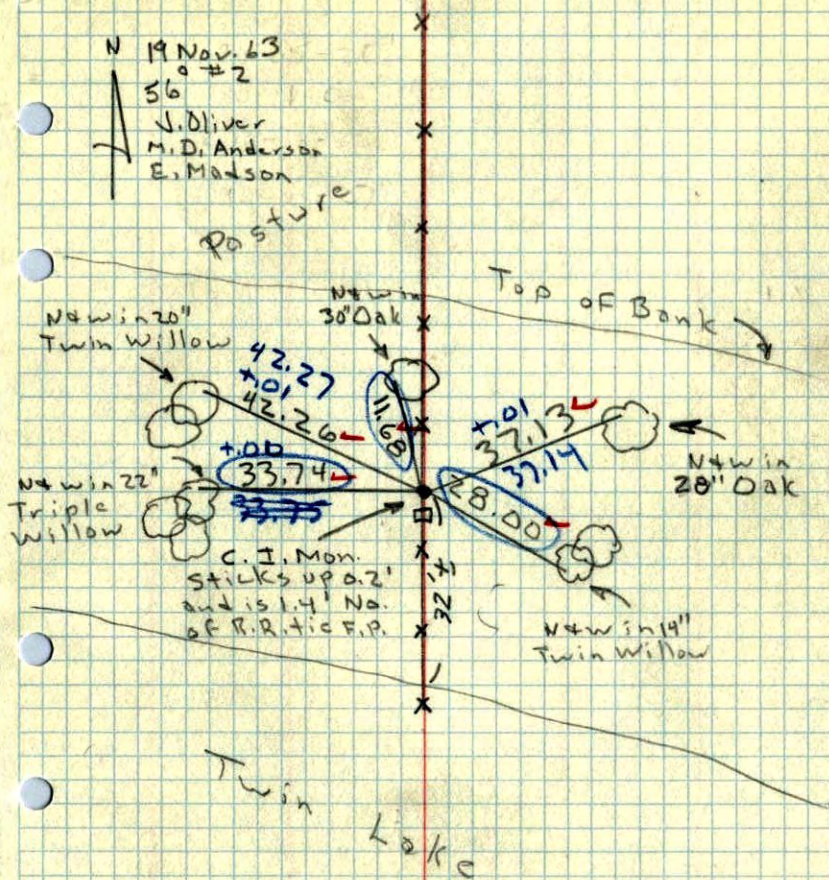
ROLAND W. ANDERSON
COUNTY SURVEYOR
ANOKA COUNTY, MINNESOTA

Entered
HL



W 1/4 Cor. Sec. 19, T33, R25

Found Cast Iron Monument set by Dan
Repper.



W 1/4 cor sec 19 T33, R25
~~R33 T25~~

8-21-61

DEP
T.H.

