

# CERTIFICATE OF LOCATION OF GOVERNMENT CORNER

County of Anoka

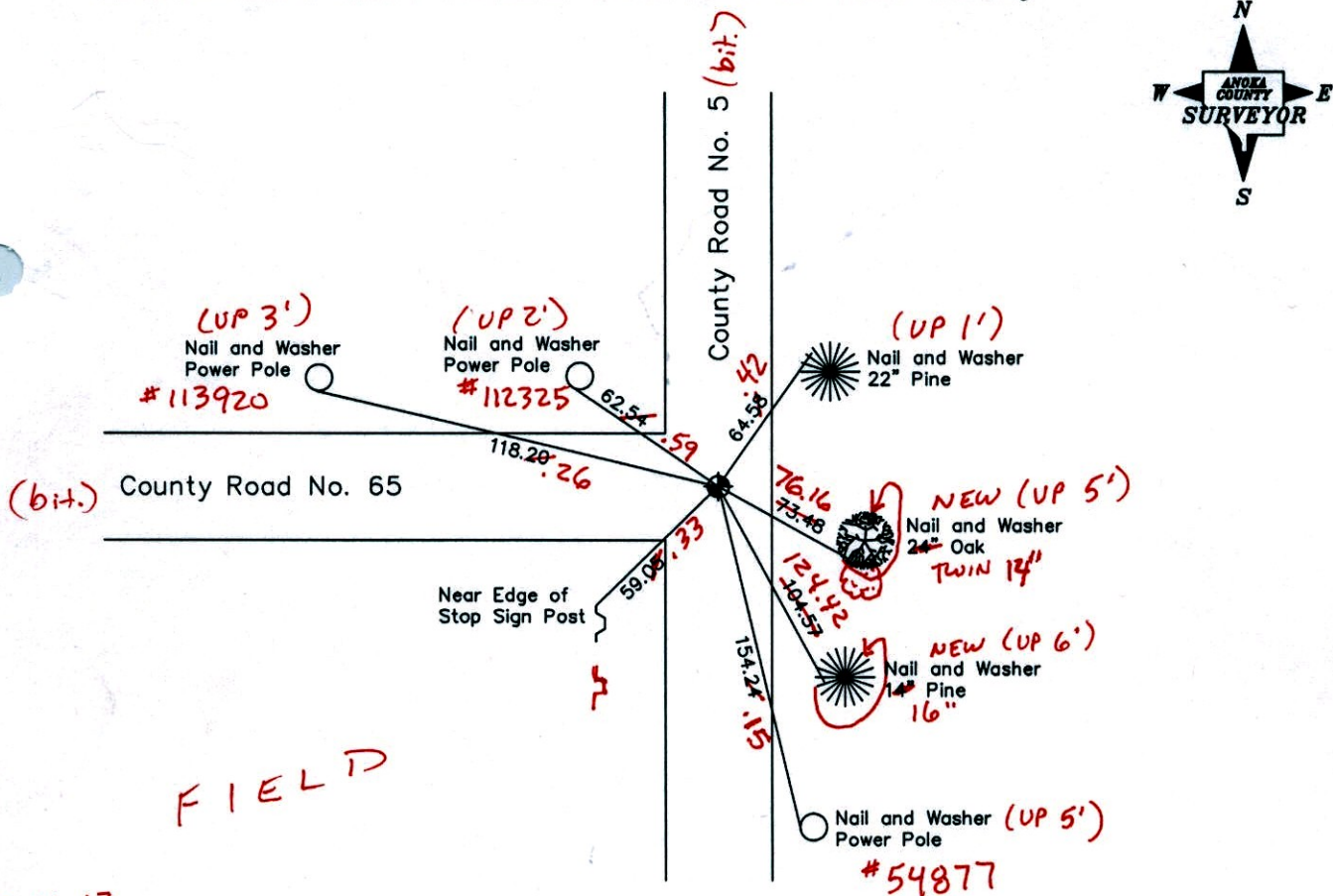
State of Minnesota

## East 1/4 Corner of Sec. 20, Township 33, Range 25

I hereby certify that on the 15th day of May, 1975, I found the described corner which was evidenced by a granite monument

and I further certify that to perpetuate the location of said corner, I did, at the exact location thereof, place a permanent marker consisting of a cast iron monument on top of granite monument ON E.C.R.#5  $\frac{1}{2}$  1' ± N. OF E.C.R.#65

which reference or witness monuments are located in the manner following:



FIELD

10-11-13  
BK-SS  
T/S-VRS

Revised date

8-25-88
10-21-98
9-24-02

N.A.D. 1983 Co-ordinates  
(1996 Adjustment)

County Project Co-ordinates		State Plane Co-ordinates	
Northing	209425.0601	Y	_____
Easting	447618.0189	X	_____

Date 8-21-02

VRS 3PQ = 0.06    N = 209425.0662    E = 447618.0657



# CERTIFICATE OF LOCATION OF GOVERNMENT CORNER

County of Anoka

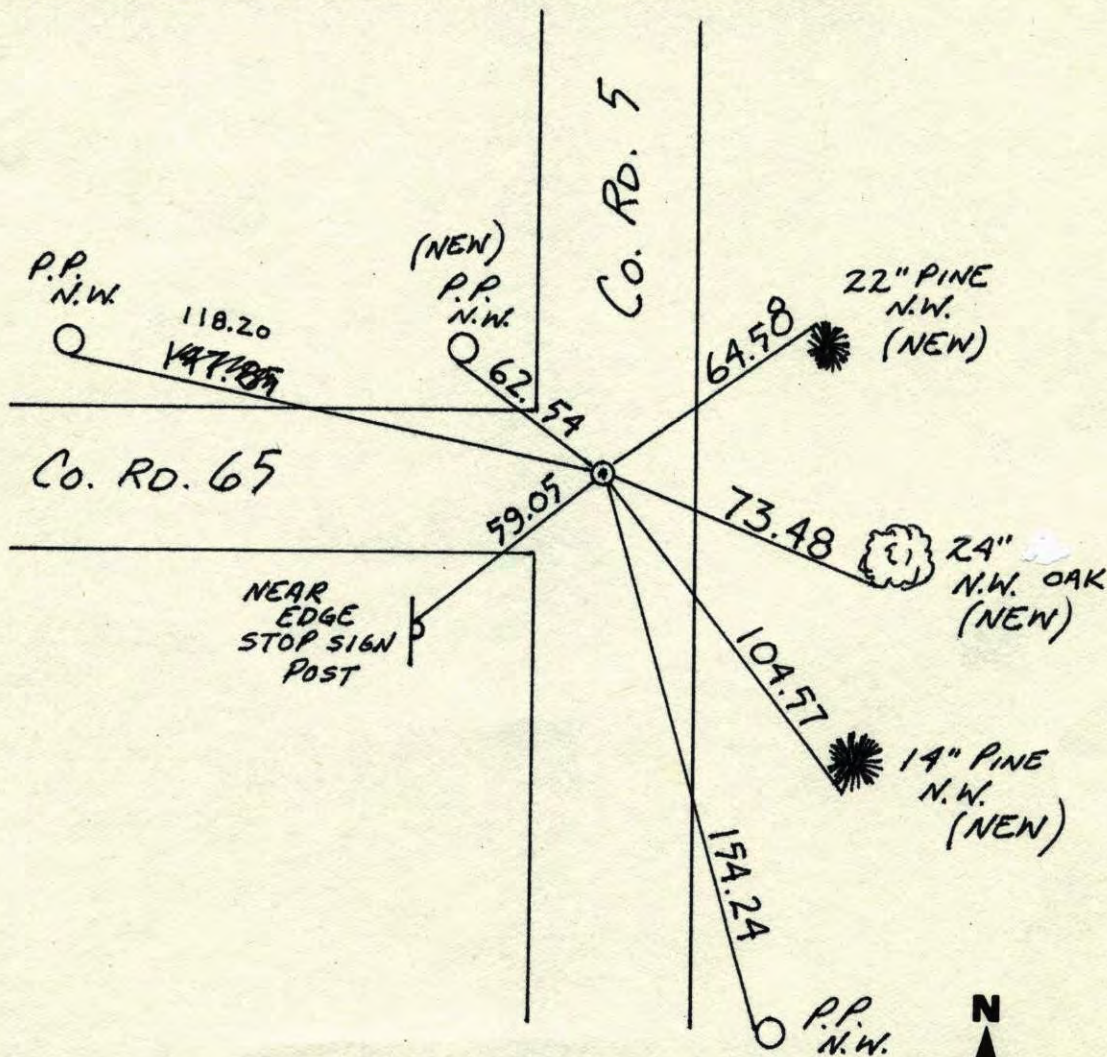
State of Minnesota

EAST QTR. Corner of Sec. 20 Township 33 Range 25

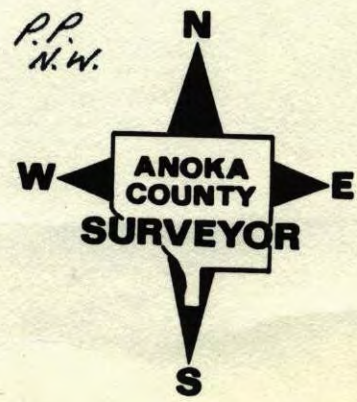
I hereby certify that on the 15 day of MAY, 19 75, I found the described corner which was evidenced by GRANITE MON.

and I further certify that to perpetuate the location of said corner, I did, at the exact location thereof, place a permanent marker consisting of CAST IRON MON.; ON TOP OF GRANITE MON.

which reference or witness monuments are located in the manner following:

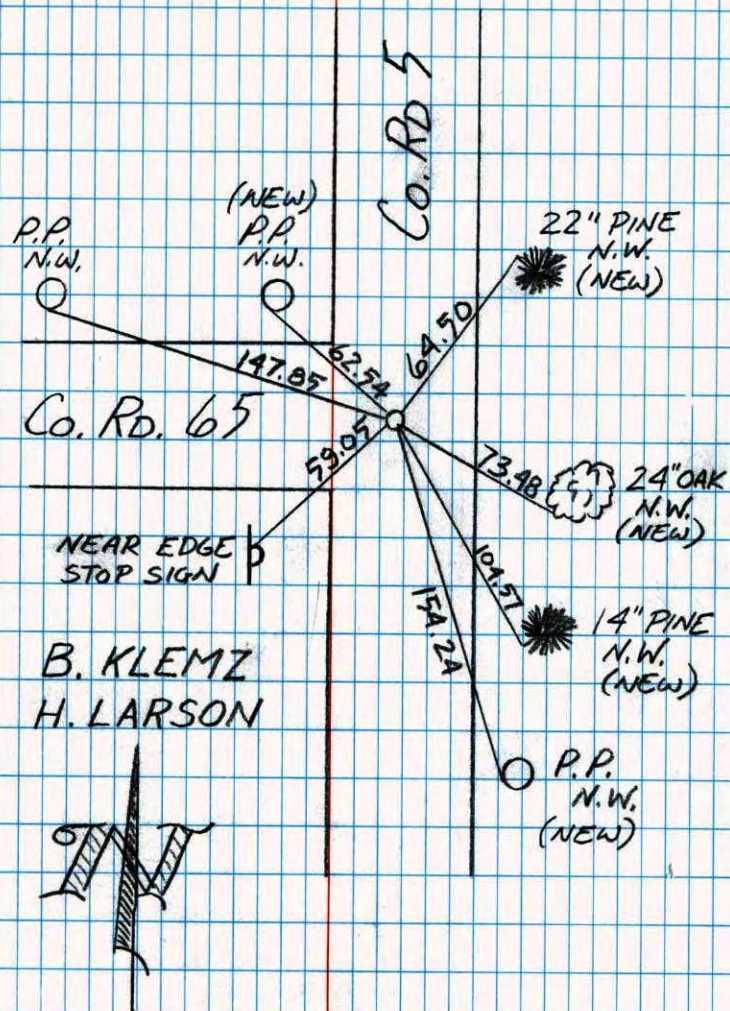


Revised date	Revised date	Revised date
8-25-88		
10-21-98		
9-24-02		



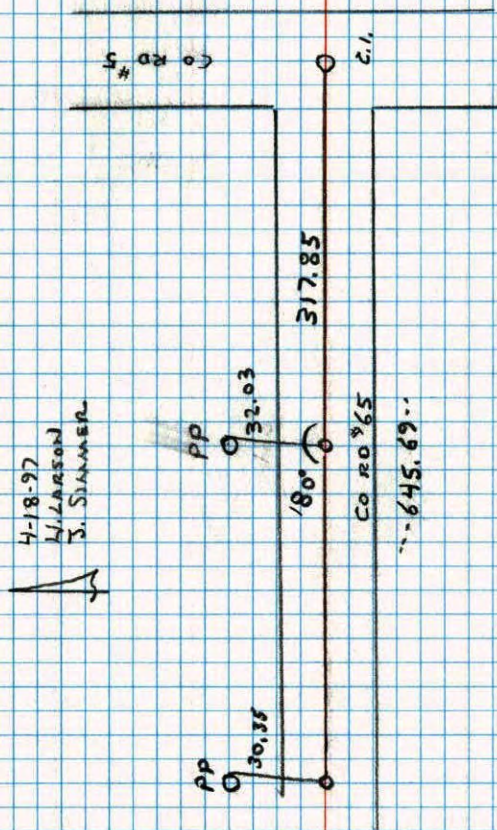
EAST QTR. SEC. 20 T33 R25

RETIED CAST IRON MON.



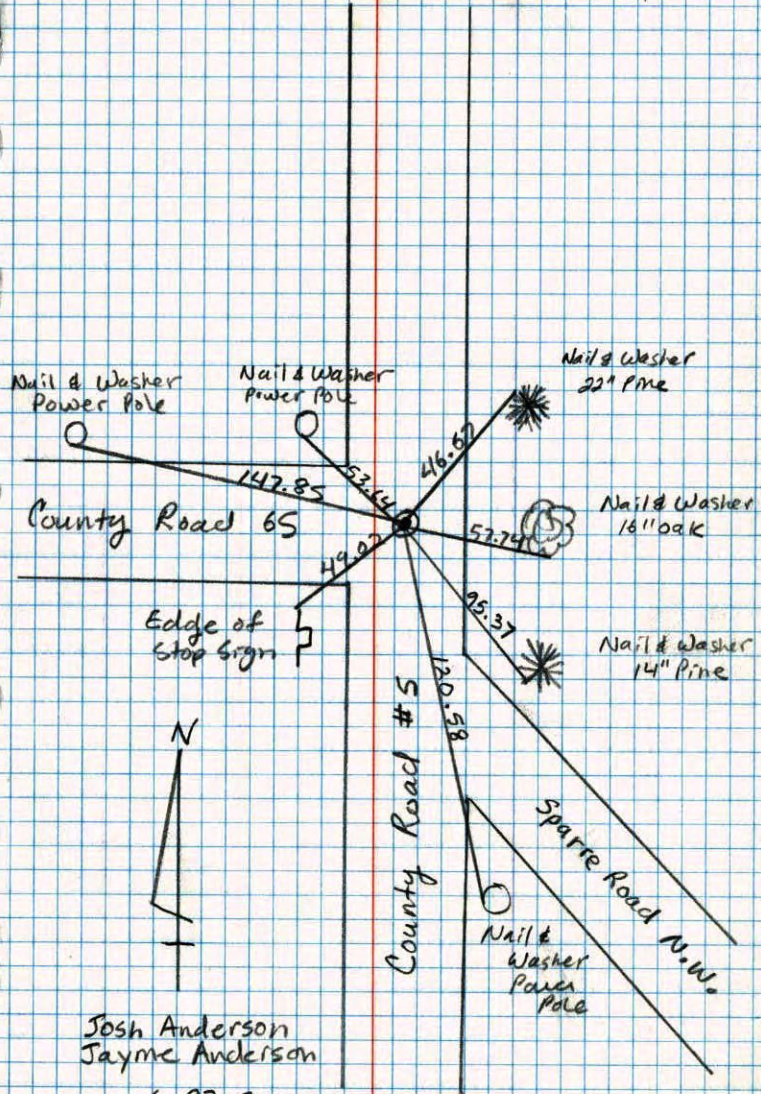
E 1/4 CORNER SECTION 20 T33 R25

SET 1/2" IPS AS TRANSIT TIES



E 1/4 Sec. 20 T. 33 R. 25

CAST IRON MONUMENT

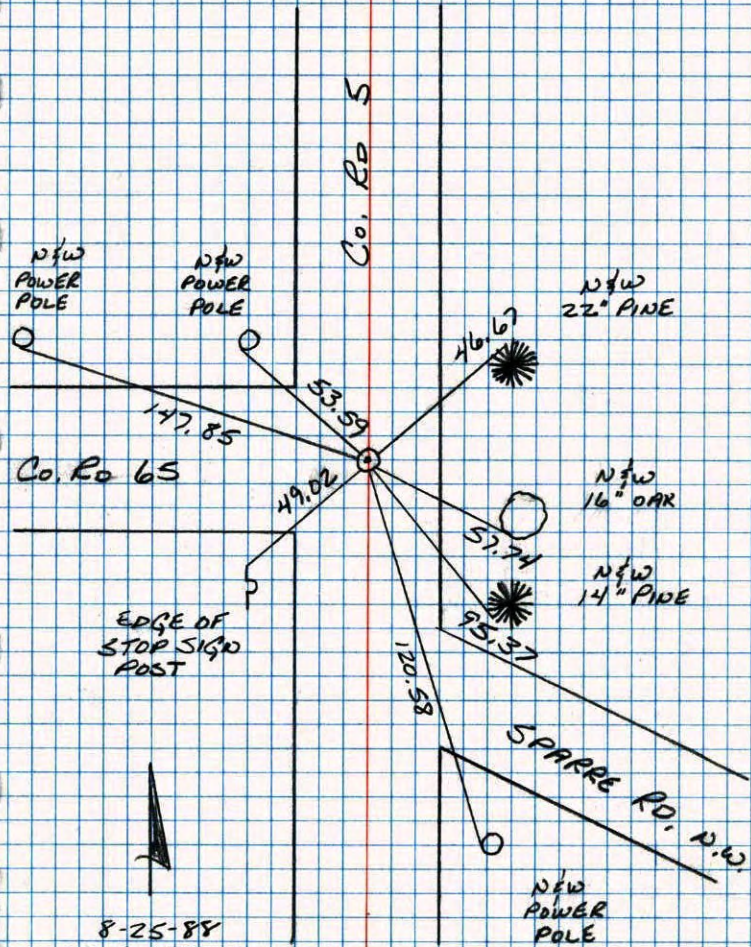


Josh Anderson  
Jayme Anderson

6-27-94

E 1/4 CORNER SEC 20 T33 R25

RETIRED CAST IRON MONUMENT.

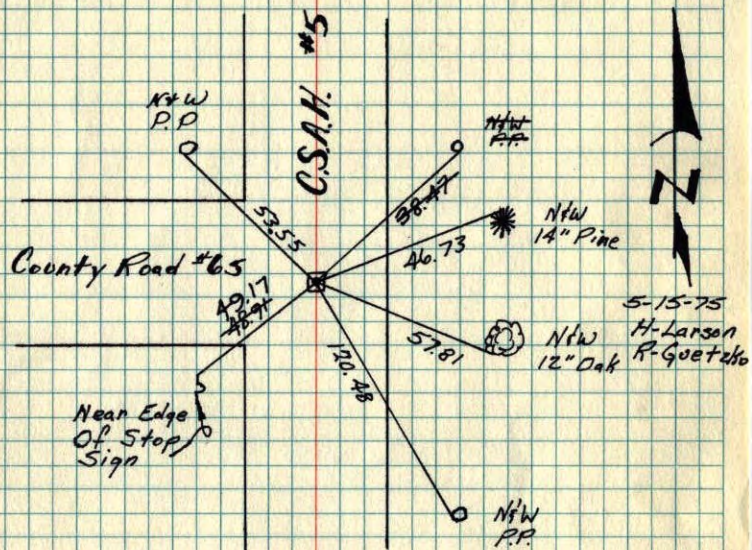


8-25-88  
B. GUETZKO  
A. SHROYER  
M. NALL-H  
72° 200' TAPE

## E 1/4 Cor. Sec 20 - T33 - R25

Found Granite Monument Down .5'. Placed  
Broken Cast Iron Monument On Top.

C.I. Flush With Blacktop. P.K.'s 2.00' N+E.



TIE CHECK  
7-12-79  
D. STEPHENS  
D. STEPHENS  
P. ROSS

TIE CHECK  
8-2-82  
P. ROSS  
P. HORNBY

TIE CHECK  
7-26-76  
G. ADAMS  
S. BRIEN  
J. STEPHENS

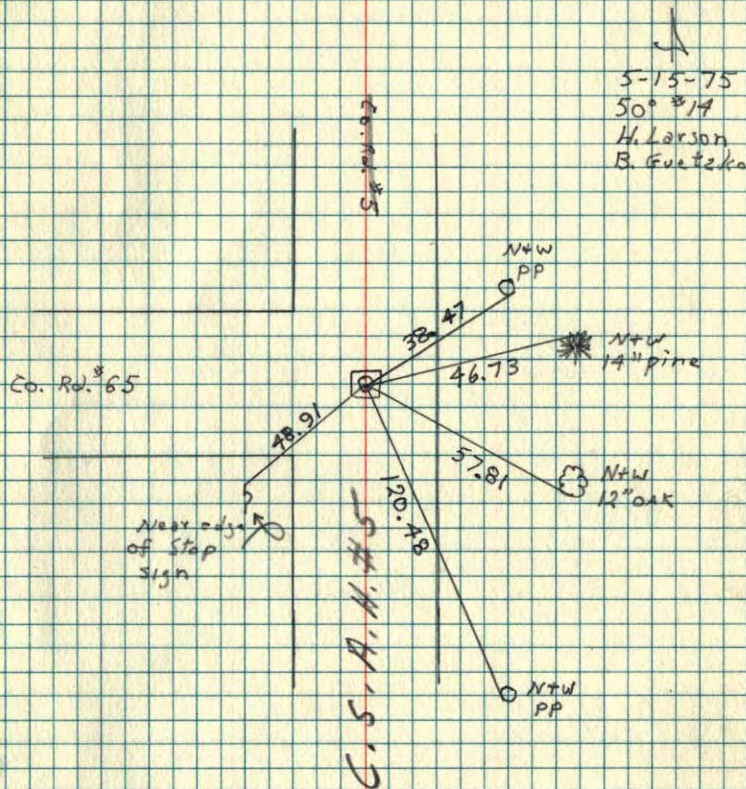
TEMPERATURE CORRECTED  
AND HORIZONTALLY  
TAPED MEASUREMENTS

ROLAND W. ANDERSON  
COUNTY SURVEYOR  
ANOKA COUNTY, MINNESOTA

## E 1/4 Cor. Sec. 20 T 33 R 25

Found granite monument down .5'  
place broken cast iron mon. on top.

C.I. flush with blacktop. P.K.'s 2.00' N+E.



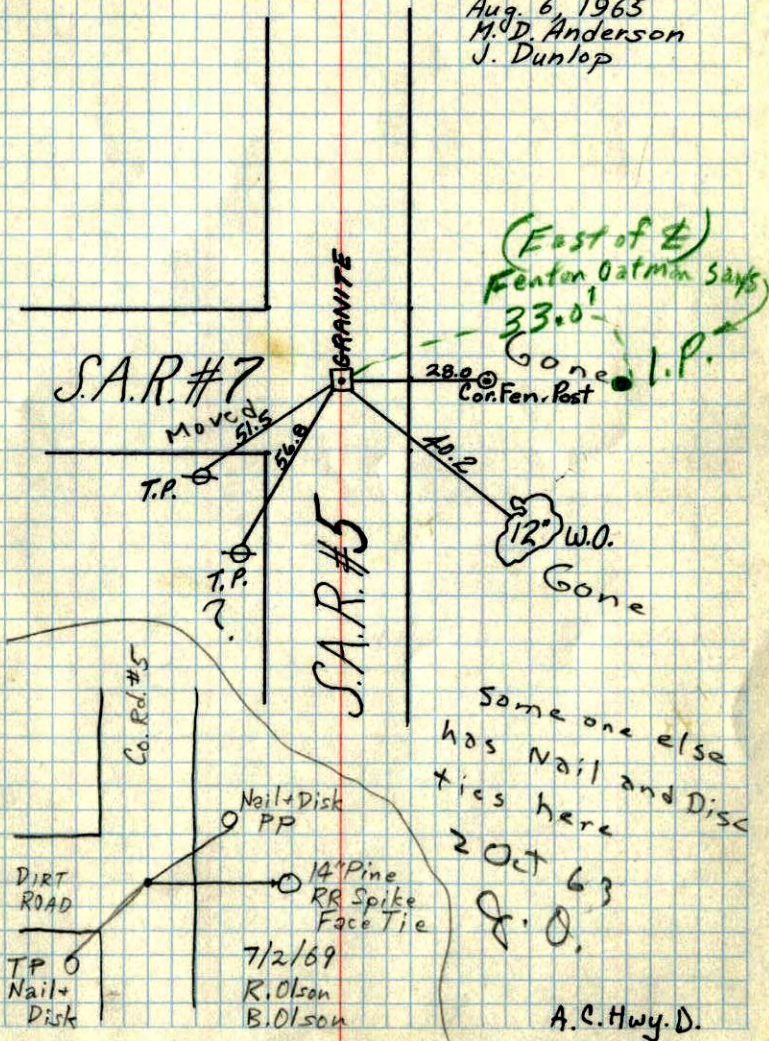
5-15-75  
50° 14'  
H. Larson  
B. Goetzko

E

W<sup>1</sup>/<sub>4</sub> CORNER OF SEC. 21, T33, R25

GRANITE

Could not find  
any ties or evidence  
of a corner  
Aug. 6, 1965  
M.D. Anderson  
J. Dunlop



(East of E)  
Fenton Oatman says  
33.0'

Gone  
28.0' Con. Fen. Post  
I.P.

Some one else  
has Nail and Disc  
ties here  
2 Oct 63  
Q.O.

7/2/69  
R. Olson  
B. Olson

A.C. Hwy. D.

73 ✓

E

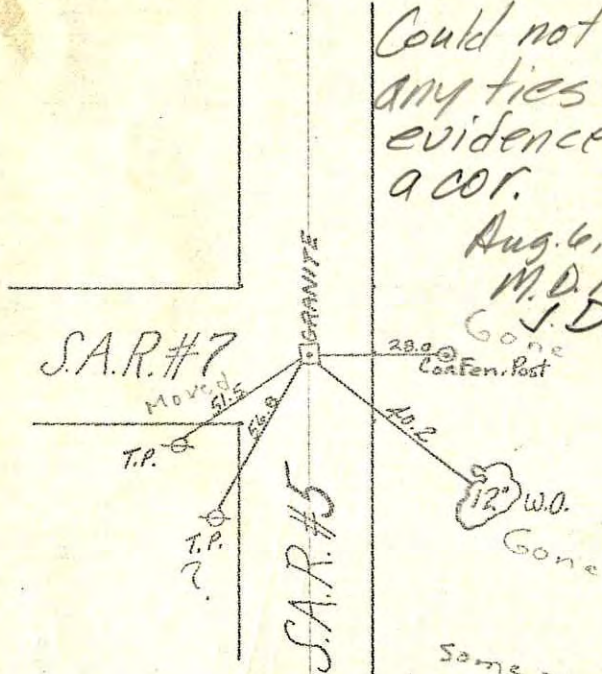
W<sup>1</sup>/<sub>4</sub> CORNER OF SEC. 21, T33, R25

GRANITE

Also

Could not find  
any ties or  
evidence of  
a cor.

Aug. 6, 1965  
M.D.A.  
J.D.



Gone  
28.0' Con. Fen. Post

Some one else  
has Nail and Disc  
ties here  
2 Oct 63  
Q.O.

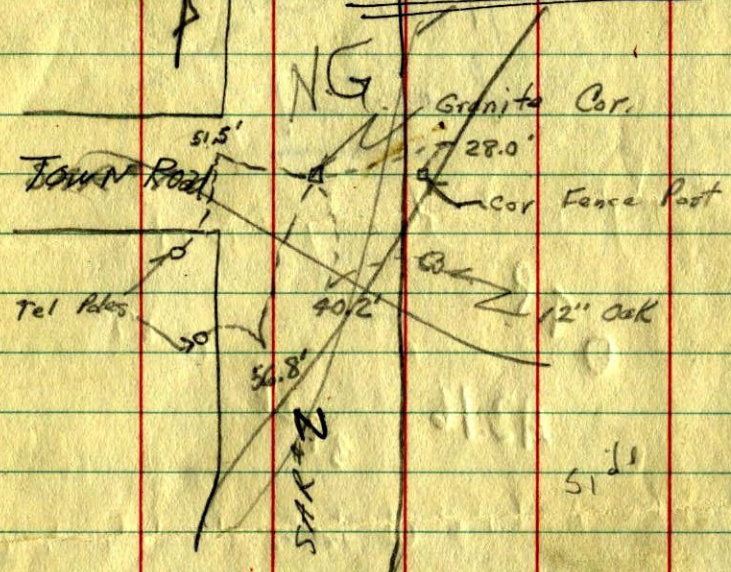
A.C. Hwy. D.

21 ✓

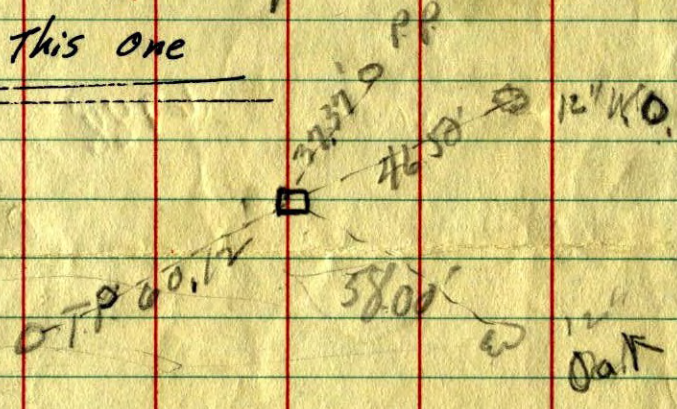
Burns Twp.

20  
104 Cor - Sec 20 - T33N - R25W

Tie Entered



check this one



By Wilke

DIETZGEN NO. 384-S