

CERTIFICATE OF LOCATION OF GOVERNMENT CORNER

County of Anoka

State of Minnesota

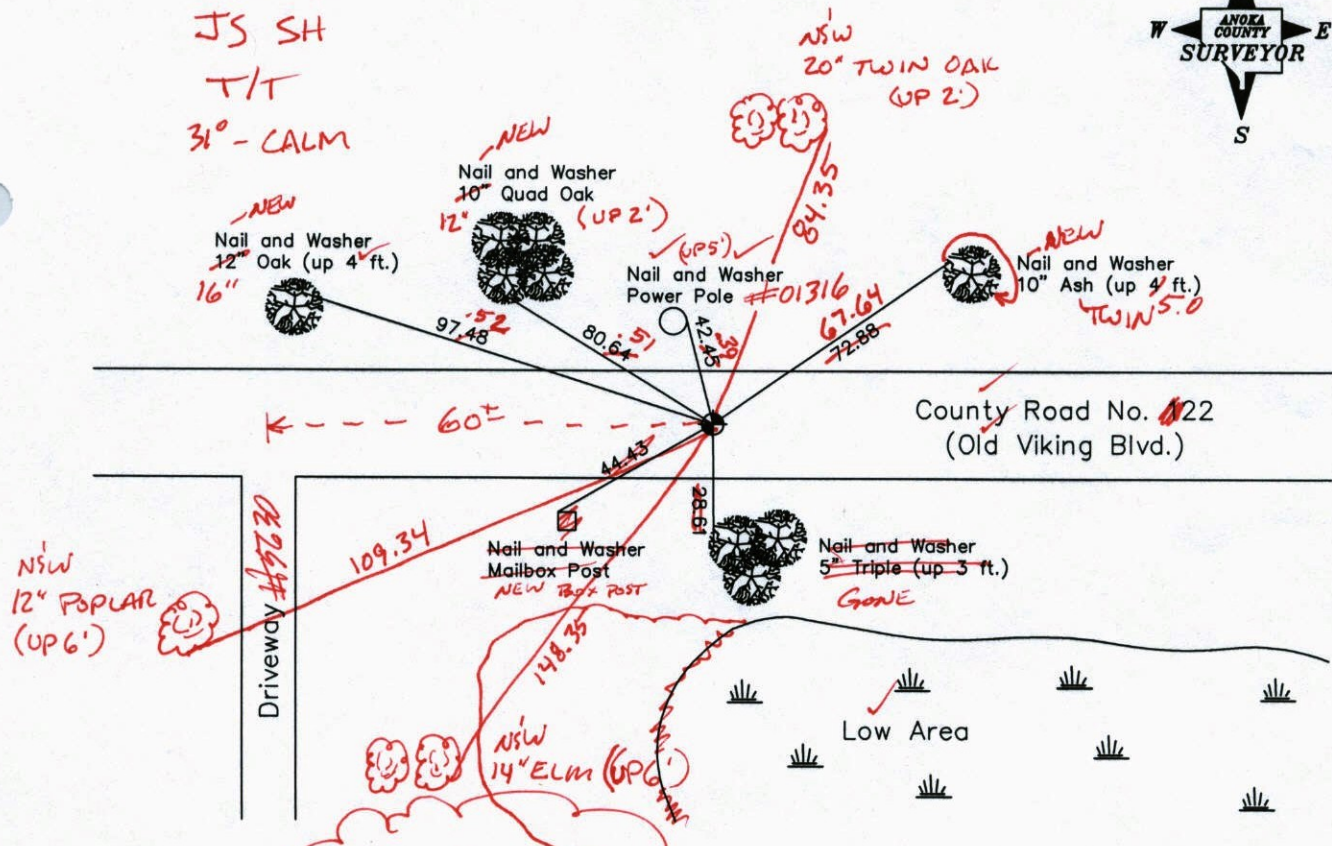
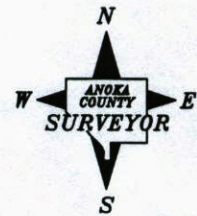
West 1/4 Corner of Sec. 24, Township 33, Range 25

I hereby certify that on the 24th day of August, 1964, I found the described corner which was evidenced by a iron pipe set by Leroy Winner

and I further certify that to perpetuate the location of said corner, I did, at the exact location thereof, place a permanent marker consisting of a cast iron monument, 1 ft. ± north of centerline
(FLUSH)

which reference or witness monuments are located in the manner following:

3/28/13
JS SH
T/T
31° - CALM



VRS QUAL = 0.05
N: 209306.6857
E: 463381.3749

Revised date

6-26-85
6-30-89
5-22-92
7-5-94
9-30-02

N.A.D. 1983 Co-ordinates
(1996 Adjustment)

County Project Co-ordinates	
Northing	209306.6550
Easting	463381.4216

State Plane Co-ordinates	
Y	_____
X	_____

Date 9-25-02

CERTIFICATE OF LOCATION OF GOVERNMENT CORNER

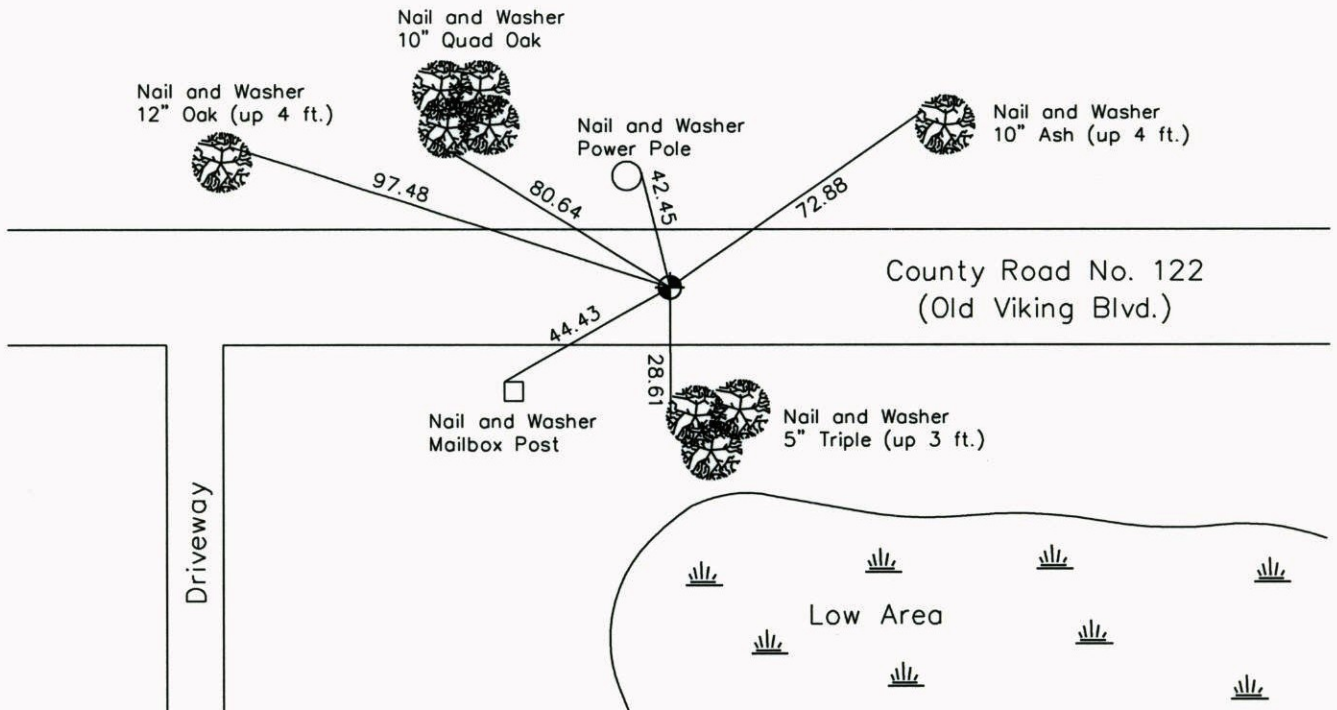
County of Anoka State of Minnesota

West 1/4 Corner of Sec. 24, Township 33, Range 25

I hereby certify that on the 24th day of August, 1964, I found the described corner which was evidenced by a iron pipe set by Leroy Winner

and I further certify that to perpetuate the location of said corner, I did, at the exact location thereof, place a permanent marker consisting of a cast iron monument, 1 ft. ± north of centerline

which reference or witness monuments are located in the manner following:



Revised date

6-26-85
6-30-89
5-22-92
7-5-94
9-30-02

N.A.D. 1983 Co-ordinates
(1996 Adjustment)

County Project Co-ordinates	State Plane Co-ordinates
Northing <u>209306.6550</u>	Y _____
Easting <u>463381.4216</u>	X _____

Date 9-25-02

CERTIFICATE OF LOCATION OF GOVERNMENT CORNER

County of Anoka

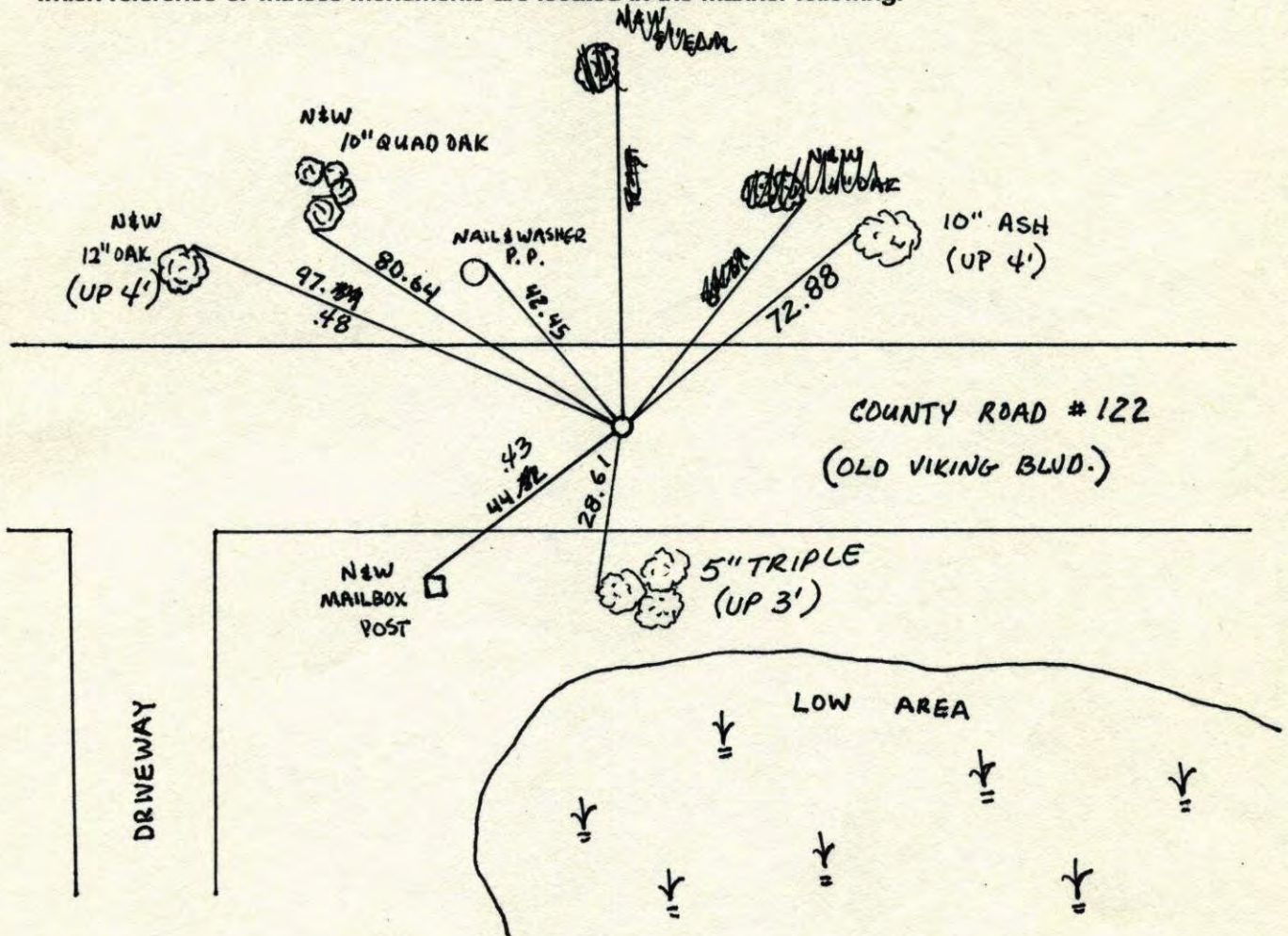
State of Minnesota

WEST 1/4 Corner of Sec. 24 Township 33 Range 25

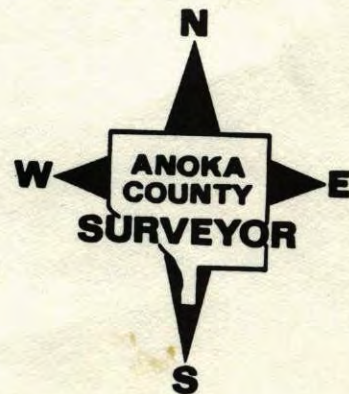
I hereby certify that on the 24 day of AUGUST, 1964, I found the described corner which was evidenced by IRON PIPE SET BY LEROY WINNER

and I further certify that to perpetuate the location of said corner, I did, at the exact location thereof, place a permanent marker consisting of CAST IRON MONUMENT, ±1' NORTH OF CENTER-LINE

which reference or witness monuments are located in the manner following:

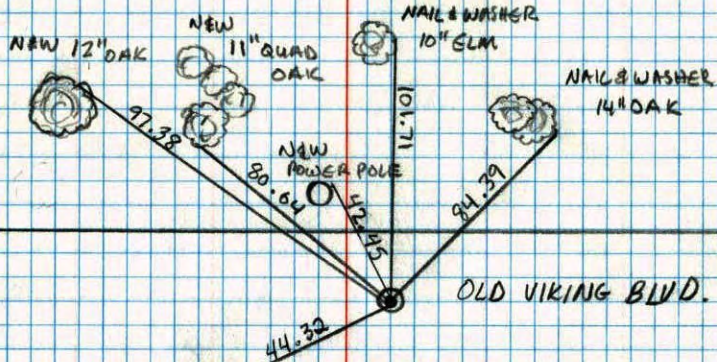


Revised date	Revised date	Revised date
6-26-85		
6-30-89		
RAISED 5-22-92 H.L.		
7-5-94		
9-30-02		



W 1/4 Sec. 24 T. 33 R. 25

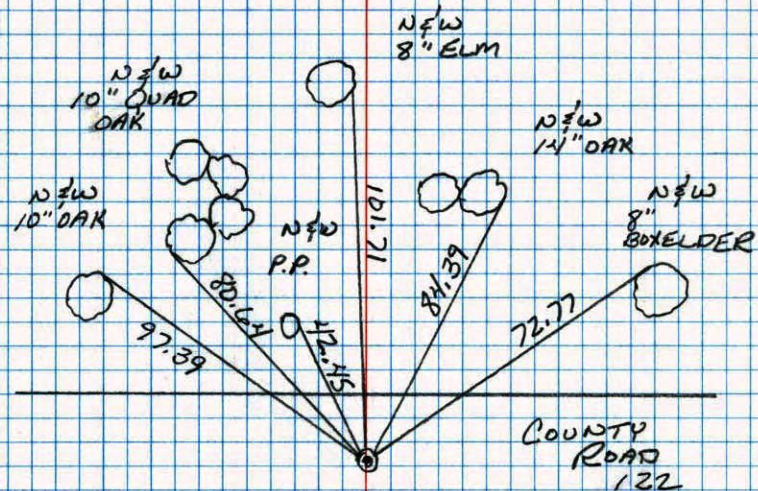
RETIÉ CAST IRON MONUMENT



N
 JOSH ANDERSON
 JAYME ANDERSON
 7-5-94

WEST 1/4 CORNER SEC 24 T33 R25

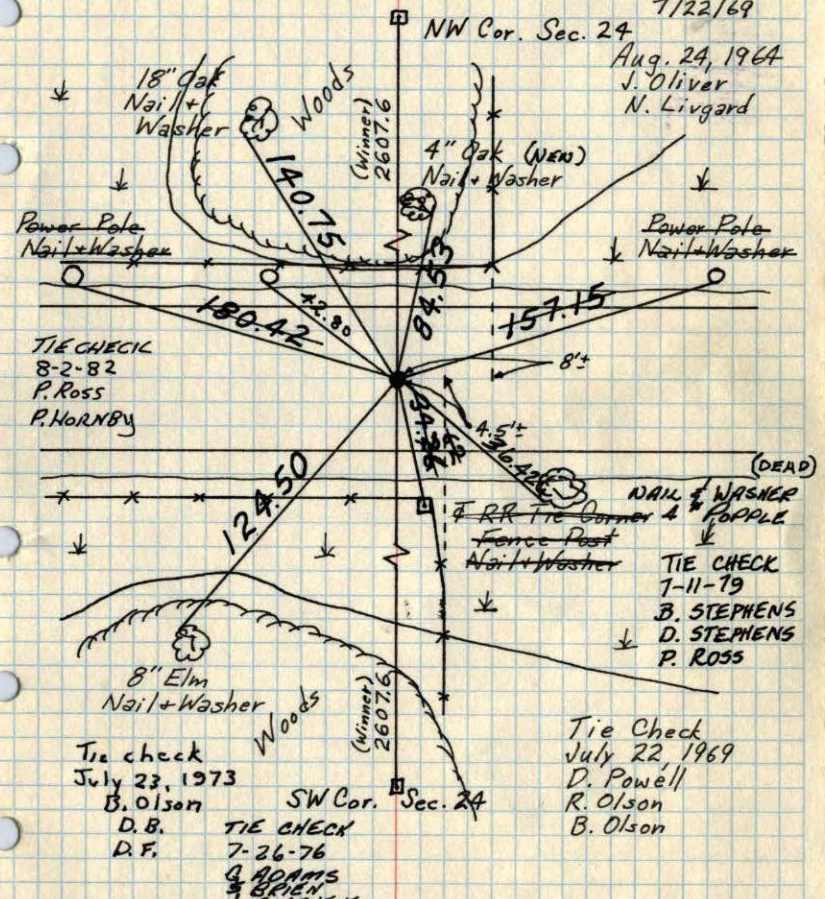
RETIÉD CAST IRON MONUMENT



6-30-89
 GUETZKO
 STEVENSON
 ZIMMERMAN
 SHROYER

W 1/4 Cor. Sec. 24-T33-R25

Replaced Iron Pipe set by LeRoy Winner with Cast Iron Monument flush. Monument is 1/2 way and on line between Section Corners. Monument 1 1/2 North of E. PK Nails 2.00' North + East. 7/22/69



TEMPERATURE CORRECTED AND HORIZONTALLY TAPED MEASUREMENTS

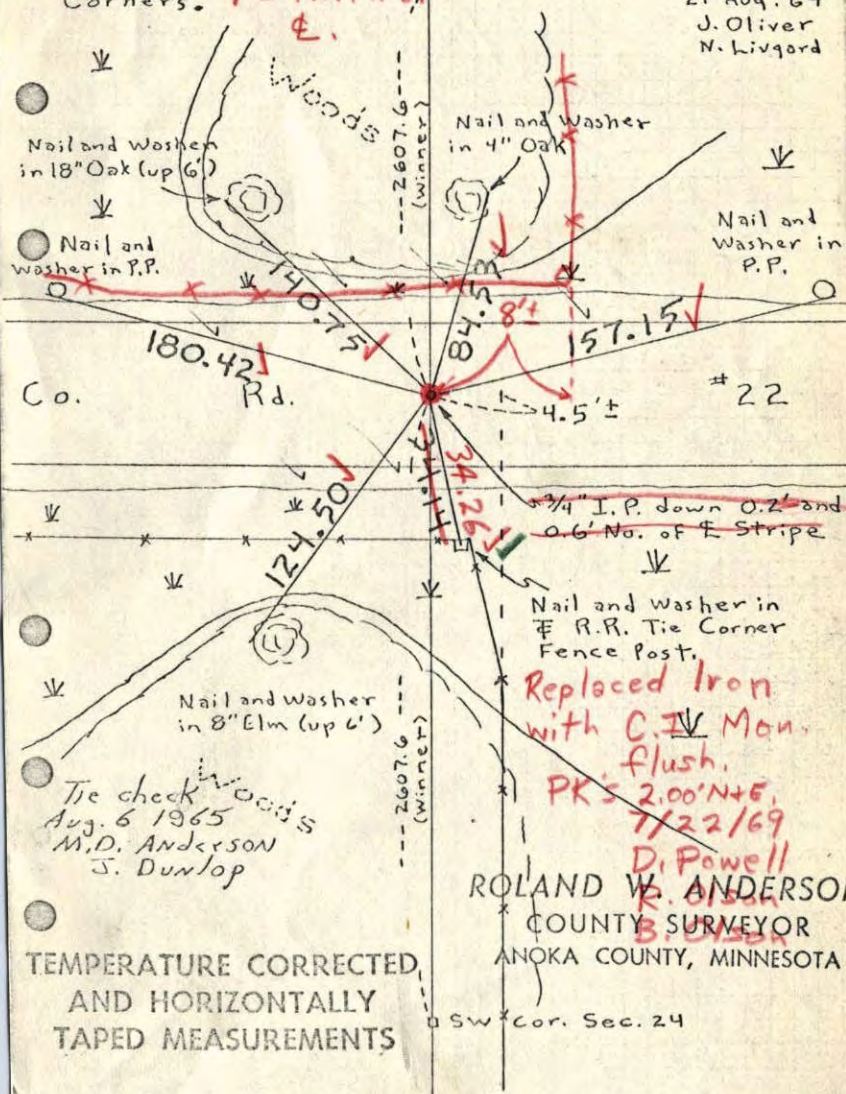
ROLAND W. ANDERSON COUNTY SURVEYOR ANOKA COUNTY, MINNESOTA

W 1/4 Cor. Sec. 24, T33, R25

Found 3/4" Iron pipe (down 0.2') set by Leroy

Winner, 1/2 way and on line between Section Corners. 1 1/2 North of NW Cor. Sec. 24

21 Aug. 64 J. Oliver N. Livgard



TEMPERATURE CORRECTED AND HORIZONTALLY TAPED MEASUREMENTS

ROLAND W. ANDERSON COUNTY SURVEYOR ANOKA COUNTY, MINNESOTA

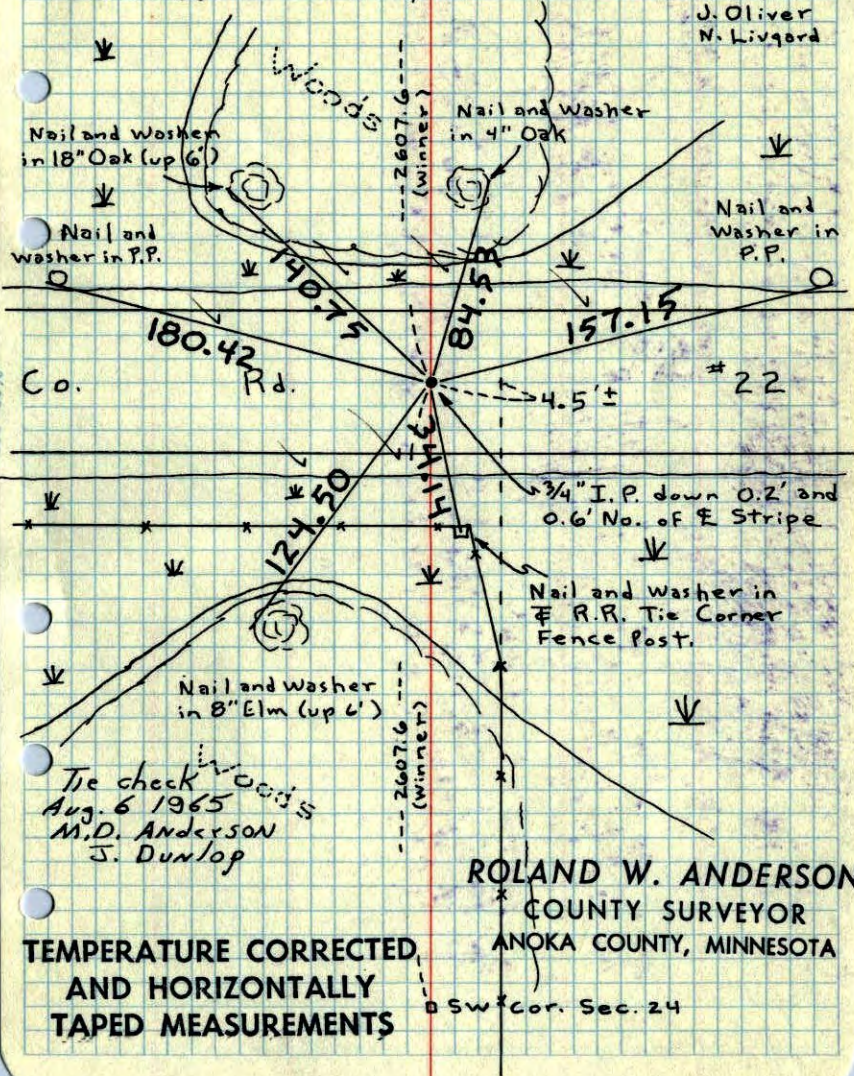
Replaced Iron with C.I. Mon. flush. PK'S 2.00' N+E, 7/22/69 D. Powell

W 1/4 Cor. Sec. 24, T33, R25

Found 3/4" Iron pipe (down 0.2') set by Leroy

Winner, 1/2 way and on line between Section
Corners.

21 Aug. 64
J. Oliver
N. Livgard



ROLAND W. ANDERSON
COUNTY SURVEYOR
ANOKA COUNTY, MINNESOTA

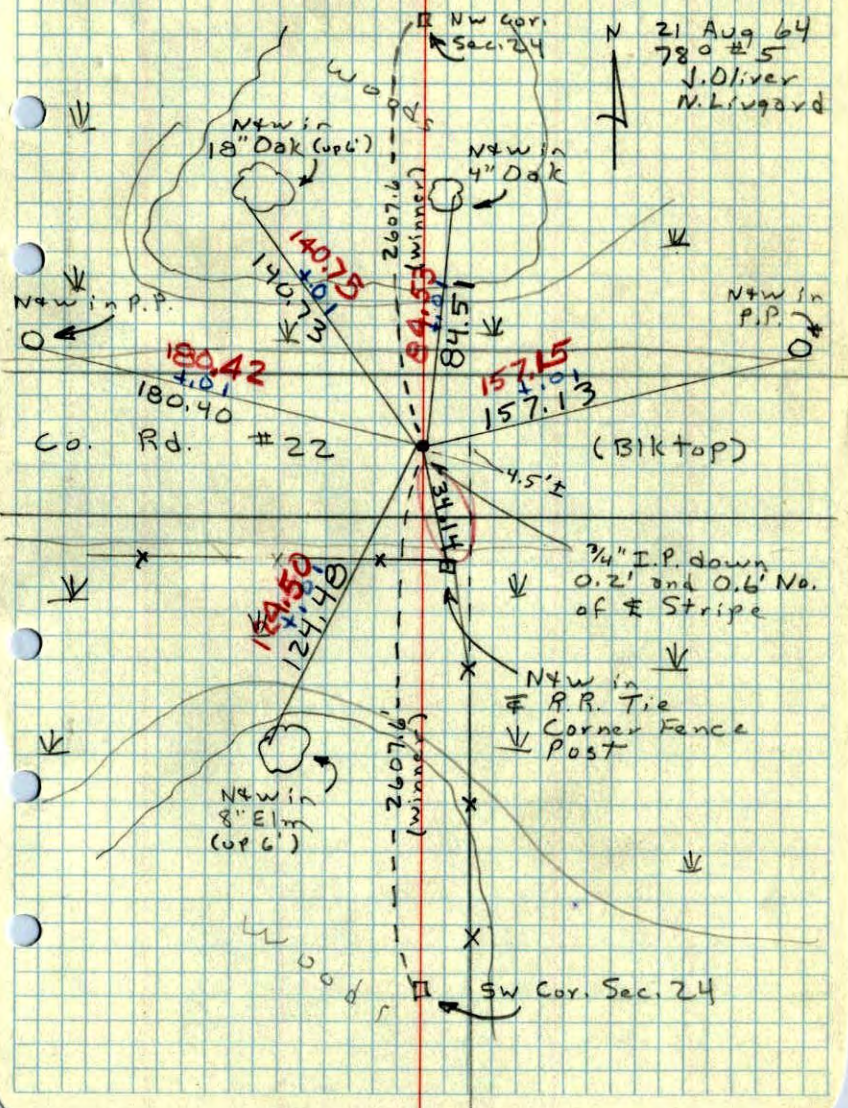
TEMPERATURE CORRECTED
AND HORIZONTALLY
TAPED MEASUREMENTS

W 1/4 Cor. Sec. 24, T33, R25

Found 3/4" I.P. down 0.2' set by Leroy Winner

1/2 way and on line between Section Corners.

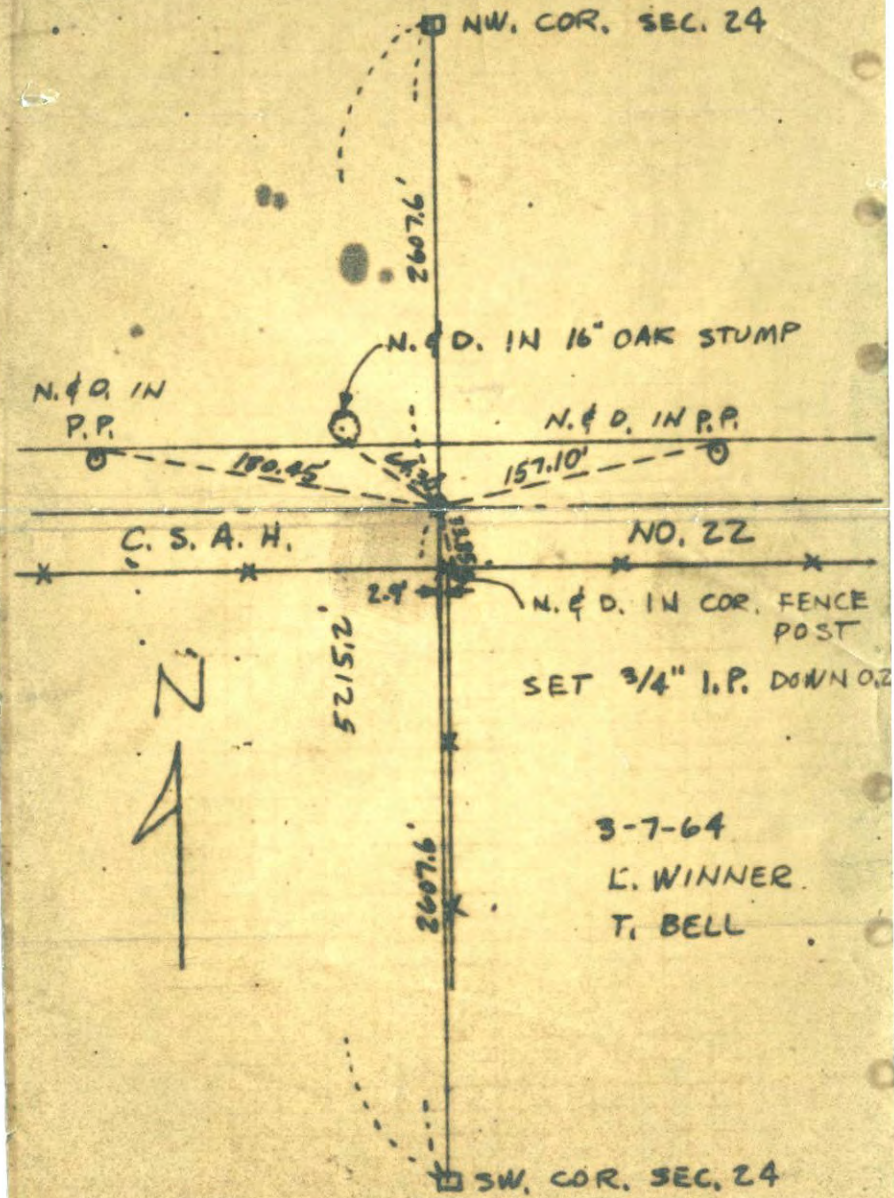
21 Aug 64
780 #5
J. Oliver
N. Livgard



ROLAND W. ANDERSON
COUNTY SURVEYOR
ANOKA COUNTY, MINNESOTA

TEMPERATURE CORRECTED
AND HORIZONTALLY
TAPED MEASUREMENTS

W 1/4 COR. SEC. 24, T. 33 N., R. 25 W.



SET 3/4" I.P. DOWN 0.2

3-7-64
L. WINNER
T. BELL