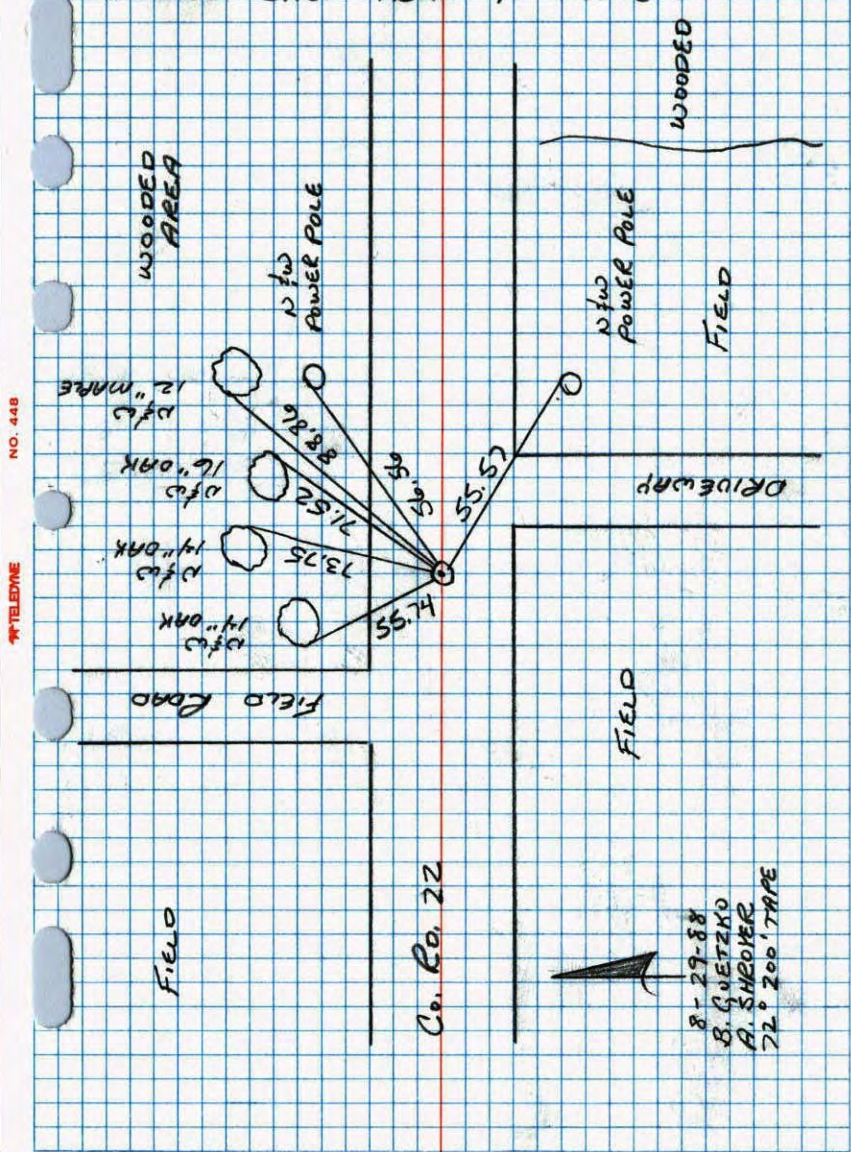


N.E. CORNER SEC 25 T33 R25

RETIRO CAST IRON MONUMENT



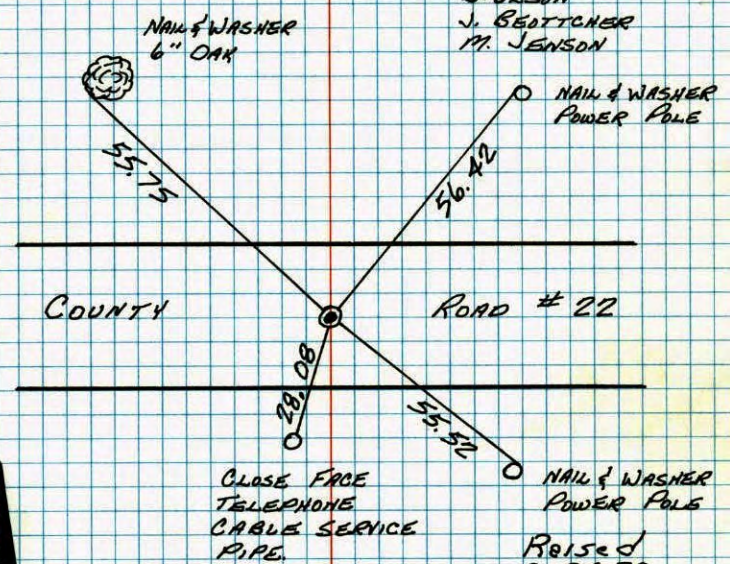
TELETYPE NO. 448

8-27-88  
 B. GUETZKO  
 A. SHROVER  
 22' 200' TAPE

N.E. COR. SEC. 25, T33, R25

CONCRETE MONUMENT FOUND DOWN .2' 10 FEB 60  
 H. W. R.  
 O. L. P.  
 SET CAST IRON MONUMENT FLUSH ABOVE  
 OLD CONCRETE MONUMENT. PK'S 2.00' NORTH  
 AND EAST.

14 SEP 72  
 G. OLSON  
 J. BEUTCHER  
 M. JENSON



TIE CHECK 7-26-76 G. ADAMS S. BRIEN J. STEPHENS  
 TIECHECK 8-2-82 P. ROSS P. HORNBY

TEMPERATURE CORRECTED  
 AND HORIZONTALLY  
 TAPED MEASUREMENTS

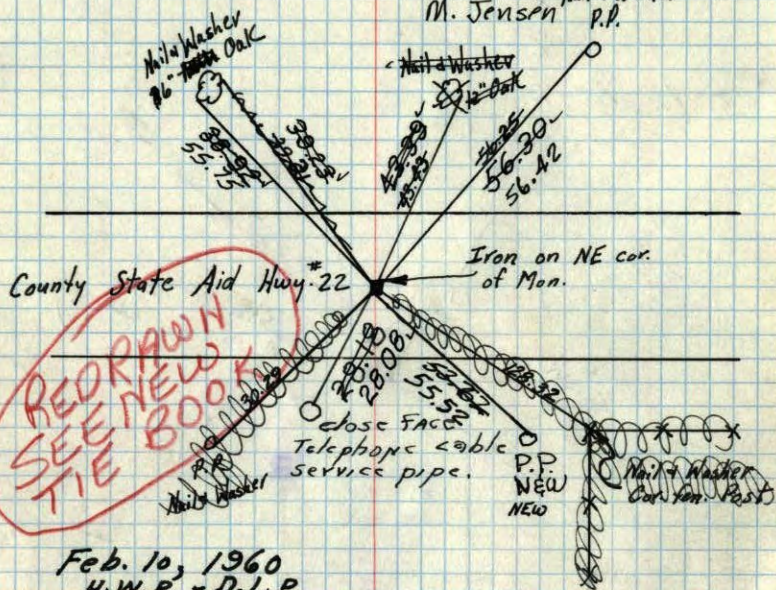
ROLAND W. ANDERSON  
 COUNTY SURVEYOR  
 ANOKA COUNTY, MINNESOTA

REVISION  
 JAN. '77  
 B. GUETZKO

Revised  
 9-26-78  
 H. Larson  
 B. Guetzko  
 D. Naglak

NE Corner Sec. 25 T33 R25

Con. Mon. down .2' Spt Cast Iron  
 Mon. Flush above old Con. Mon.  
 P.K.'s 2' NEE Sept. 14, 1972  
 B. Olson  
 J. Boettchen Nail & Washer  
 M. Jensen P.P.



Feb. 10, 1960  
 H.W.R. - D.L.P.

TEMPERATURE CORRECTED  
 AND HORIZONTALLY  
 TAPED MEASUREMENTS

ROLAND W. ANDERSON  
 COUNTY SURVEYOR  
 ANOKA COUNTY, MINNESOTA

Tie check  
 July 26, 1973 TIE CHECK  
 B. Olson G. ADAMS  
 D. Brien S. BRIEN  
 D. Farmer J. STEPHENS

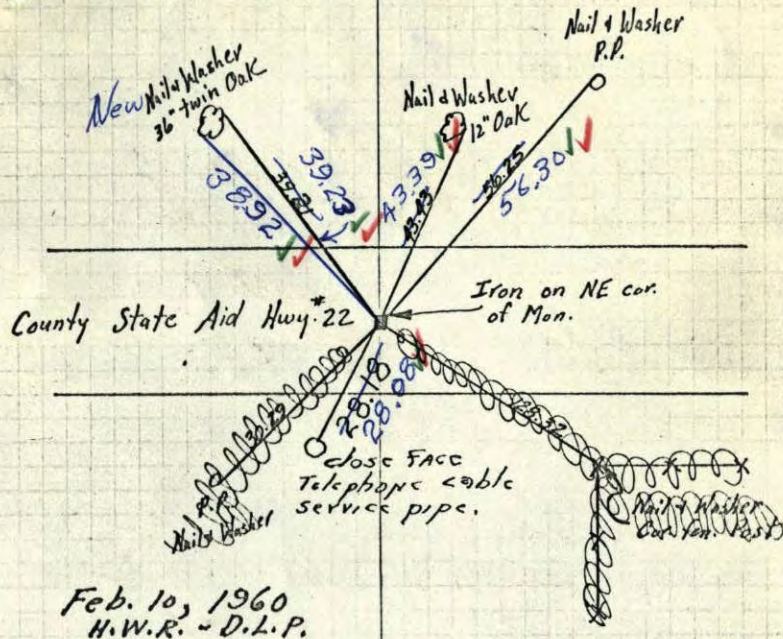
Tie check  
 Aug. 6, 1965  
 M.D. ANDERSON  
 J. Dunlop

Tie Check  
 June 28, 1968  
 D. Powell  
 P. Pich  
 R. Olson

Tie Check  
 July 7, 1969  
 R. A. Olson  
 B. N. Olson

NE Corner Sec. 25 T33 R25

Con. Mon. down .2' ✓



Feb. 10, 1960  
 H.W.R. - D.L.P.

TEMPERATURE CORRECTED  
 AND HORIZONTALLY  
 TAPED MEASUREMENTS

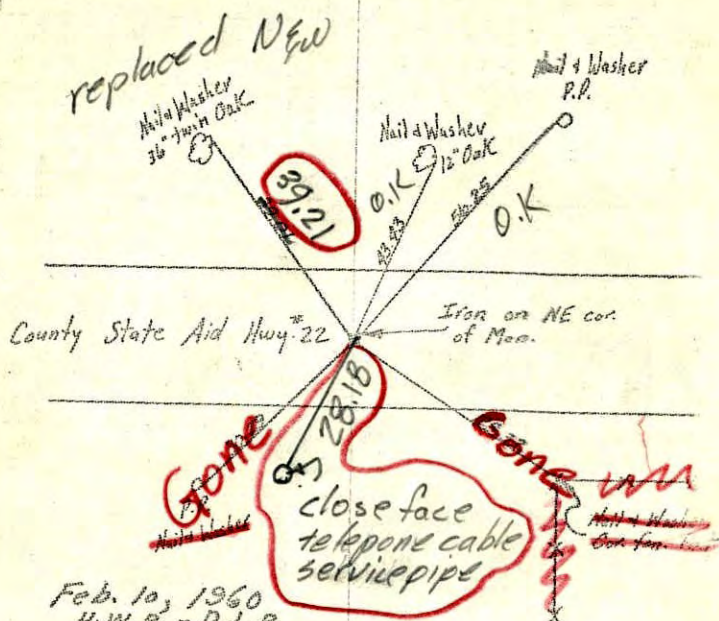
ROLAND W. ANDERSON  
 COUNTY SURVEYOR  
 ANOKA COUNTY, MINNESOTA

Tie check  
 Aug. 6, 1965  
 M.D. ANDERSON  
 J. Dunlop

6/28/68  
 ✓ #7 - 60°  
 D. Powell  
 P. Pich  
 R. Olson

NE Corner Sec. 25 T33 R25  
 Cor. Mon. down .2'

23



Feb. 10, 1960  
 H.W.R. - D.L.P.

TEMPERATURE CORRECTED  
 AND HORIZONTALLY  
 TAPED MEASUREMENTS

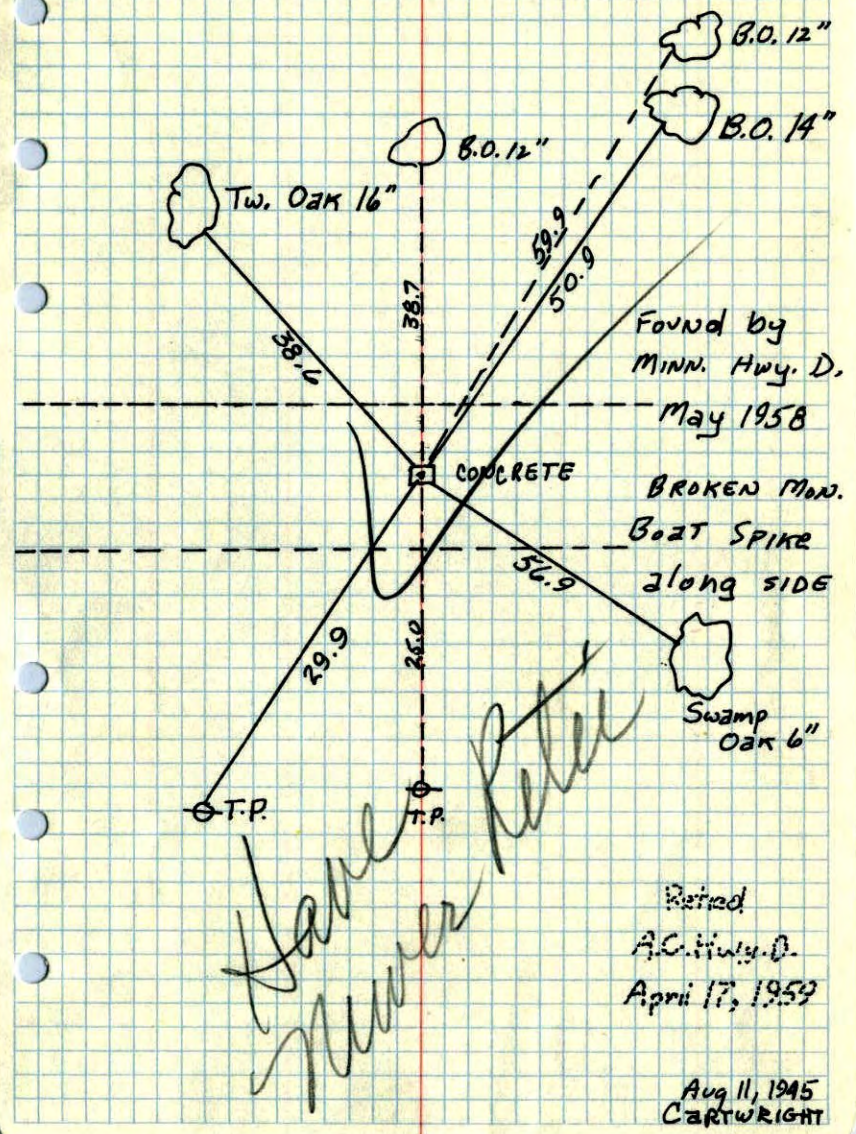
ROLAND W. ANDERSON  
 COUNTY SURVEYOR  
 ANOKA COUNTY, MINNESOTA

Entered  
 H.L.

tie check  
 Aug. 6, 1965  
 M. D. Anderson  
 J. Dunlop  
 temp. 77°  
 Tape # 5

N.E. CORNER OF SEC. 25, T33, R25  
 CONC. MON.

7 ✓

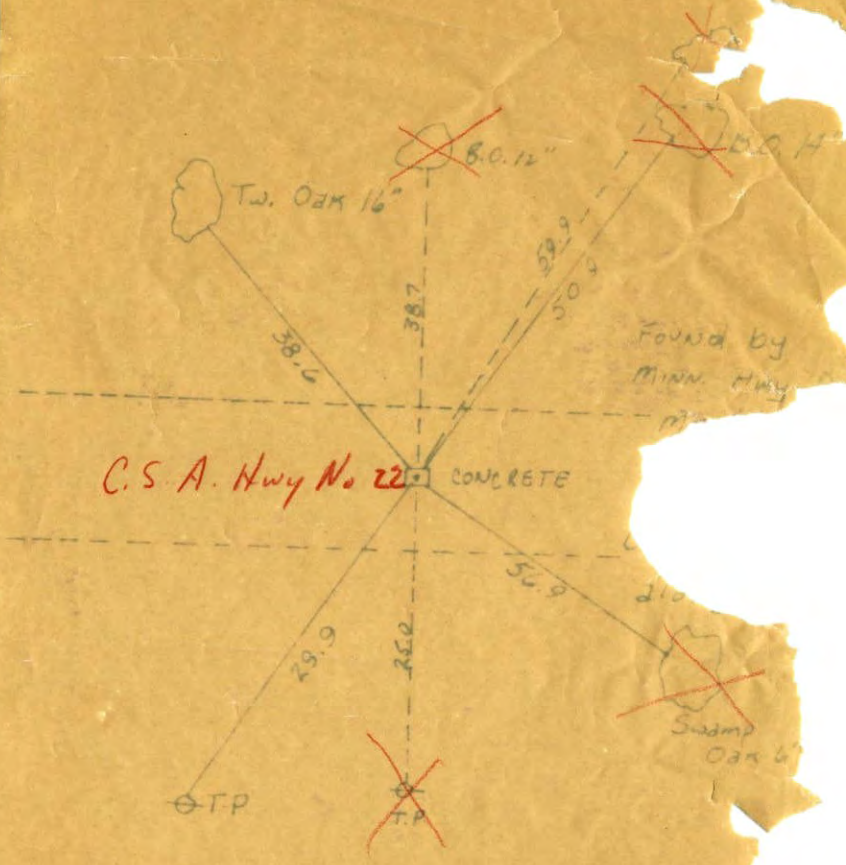


Found by  
 MINN. Hwy. D.  
 May 1958  
 BROKEN MON.  
 BOAT SPIKE  
 along SIDE

Retired  
 A.C. Hwy. D.  
 April 17, 1959

Aug 11, 1945  
 CARTWRIGHT

NE. CORNER OF SEC. 25, T33, R20  
CONC. MON.



Found by  
Minn. Hwy

April 17, 1959

Aug 11, 1945  
CARTWRIGHT